

KNIFE THREAD — BRASS

Part Number	Thread Size	L	A	B	Hole Size*	Minimum Depth**
		(in.)	(in.)	(in.)	(in.)	(in.)
400-004	4-40	.38	.25	.33	.250	.406
400-006	6-32	.38	.25	.33	.250	.406
400-008	8-32	.38	.25	.33	.250	.406
400-3	10-24	.50	.38	.46	.375	.531
400-332	10-32	.50	.38	.46	.375	.531
400-4	1/4-20	.50	.38	.46	.375	.531
400-428	1/4-28	.50	.38	.46	.375	.531
400-5	5/16-18	.63	.50	.60	.500	.656
400-524	5/16-24	.63	.50	.60	.500	.656
400-6	3/8-16	.63	.50	.60	.500	.656
400-624	3/8-24	.63	.50	.60	.500	.656
400-M3	M3-0.5	.38	.25	.33	.250	.406
400-M4	M4-0.7	.38	.25	.33	.250	.406
400-M5	M5-0.8	.50	.38	.46	.375	.531
400-M6	M6-1.0	.50	.38	.46	.375	.531
400-M8	M8-1.25	.63	.50	.60	.500	.656

KNIFE THREAD — STAINLESS STEEL

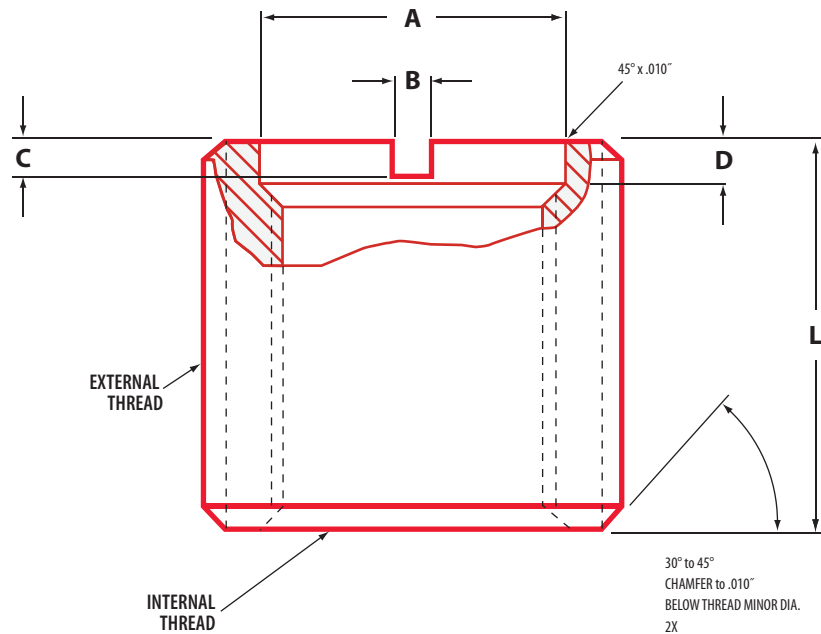
Part Number	Thread Size	L	A	B	Hole Size*	Minimum Depth**
		(in.)	(in.)	(in.)	(in.)	(in.)
400-008-CR	8-32	.38	.25	.33	.250	.406
400-3-CR	10-24	.50	.38	.46	.375	.531
400-4-CR	1/4-20	.50	.38	.46	.375	.531

Varnish may be used as lubricant during insert installation.

* Hole size requirements may vary depending on a number of factors, including material and tools.

We recommend that you test your particular application before ordering. We gladly supply free samples.

** For increased pull out strength, insert may be driven up to 1/4" below surface.

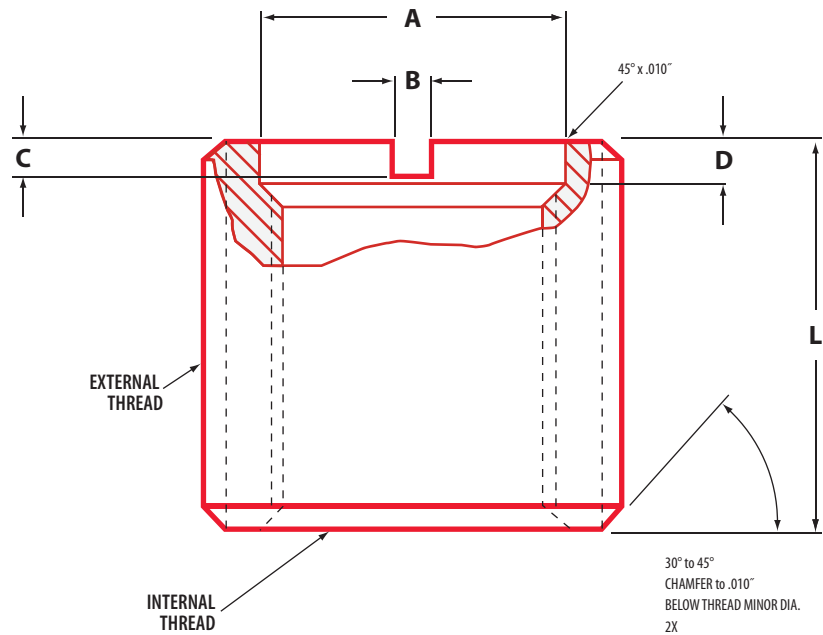


HEAVY WALL - CARBON STEEL THREAD INSERTS FOR METAL - METRIC

Part Number	Internal Thread 6H	External Thread 6G	L	A	B	C	D
			(in.)	(in.)	(in.)	(in.)	(in.)
450-3	M3-0.5	M6-1.0	.256	.128	.045	.062	.075
450-4	M4-0.7	M8-1.25	.295	.170	.065	.065	.075
450-5	M5-0.8	M8-1.25	.295	.210	.065	.065	.075
450-6	M6-1.0	M10-1.5	.413	.250	.072	.072	.080
450-8	M8-1.25	M12-1.75	.492	.328	.072	.072	.080
450-10	M10-1.5	M16-2.0	.669	.406	.103	.085	.095
450-12	M12-1.75	M16-2.0	.669	.485	.132	.110	.115
450-16	M16-2.0	M24-3.0	.787	.656	.132	.125	.130
450-20	M20-2.5	M36-4.0	1.18	.807	.132	.132	.140

HEAVY WALL - STAINLESS STEEL THREAD INSERTS FOR METAL - METRIC

Part Number	Internal Thread 6H	External Thread 6G	L	A	B	C	D
			(in.)	(in.)	(in.)	(in.)	(in.)
453-3	M3-0.5	M6-1.0	.256	.128	.045	.062	.075
453-4	M4-0.7	M8-1.25	.295	.170	.065	.065	.075
453-5	M5-0.8	M8-1.25	.295	.210	.065	.065	.075
453-6	M6-1.0	M10-1.5	.413	.250	.072	.072	.080
453-8	M8-1.25	M12-1.75	.492	.328	.072	.072	.080
453-10	M10-1.5	M16-2.0	.669	.406	.103	.085	.095
453-12	M12-1.75	M16-2.0	.669	.485	.132	.110	.115
453-16	M16-2.0	M24-3.0	.787	.656	.132	.125	.130



335 SERIES - EXTRA HEAVY WALL - CARBON STEEL THREAD INSERTS FOR METAL

Part Number	Internal Thread 2B	External Thread 2A	L (in.)	A (in.)	B (in.)	C (in.)	D (in.)
335-4	1/4-20	1/2-13	.484	.261	.072	.075	.085
335-5	5/16-18	9/16-12	.515	.323	.081	.080	.090
335-6	3/8-16	5/8-11	.515	.385	.130	.110	.115
335-8	1/2-13	7/8-9	.687	.640	.130	.125	.130
335-10	5/8-11	1-8	.781	.760	.130	.125	.130

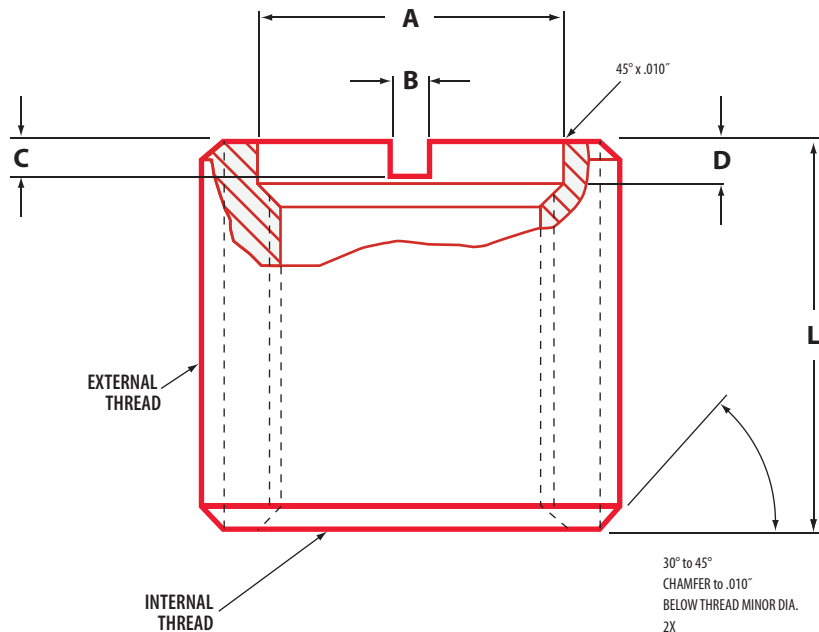


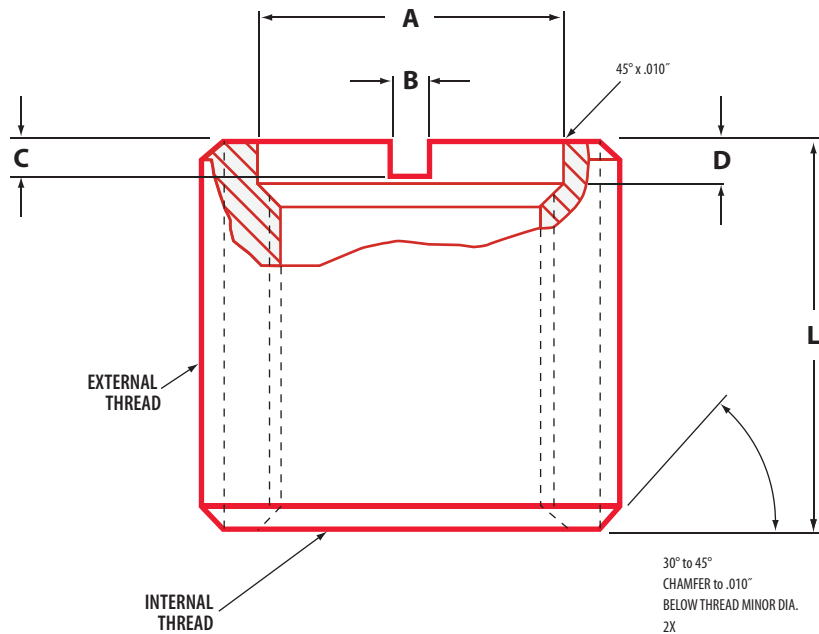
650 SERIES HEAVY WALL - CARBON STEEL THREAD INSERTS FOR METAL - METRIC/UNC

Part Number	Internal Thread 2B	External Thread 2A	L	A	B	C	D
			(in.)	(in.)	(in.)	(in.)	(in.)
650-6	M6-1.0	3/8-16	.406	.246	.064	.070	.085
650-8	M8-1.25	1/2-13	.484	.323	.081	.080	.090
650-10	M10-1.5	9/16-12	.515	.403	.091	.085	.095
650-10F	M10-1.25	9/16-12	.515	.403	.091	.085	.095
650-12	M12-1.75	3/4-10	.656	.482	.130	.110	.115
650-14	M14-2.0	7/8-9	.687	.640	.130	.125	.130
650-16	M16-2.0	1-8	.781	.640	.130	.125	.130

653 SERIES HEAVY WALL - STAINLESS STEEL THREAD INSERTS FOR METAL - METRIC/UNC

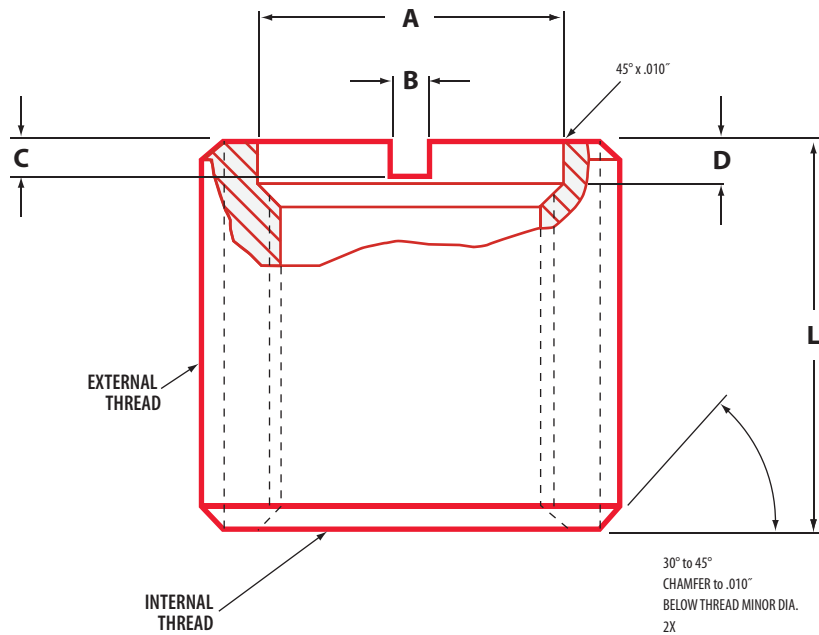
Part Number	Internal Thread 2B	External Thread 2A	L	A	B	C	D
			(in.)	(in.)	(in.)	(in.)	(in.)
653-6	M6-1.0	3/8-16	.406	.246	.064	.070	.085
653-8	M8-1.25	1/2-13	.484	.323	.081	.080	.090
653-10	M10-1.5	9/16-12	.515	.403	.091	.085	.095
653-10F	M10-1.25	9/16-12	.515	.403	.091	.085	.095
653-12	M12-1.75	3/4-10	.656	.482	.130	.110	.115
653-14	M14-2.0	7/8-9	.687	.640	.130	.125	.130
653-16	M16-2.0	1-8	.781	.640	.130	.125	.130





HEAVY WALL - STAINLESS STEEL THREAD INSERTS FOR METAL

Part Number	Internal Thread 2B	External Thread 2A	L (in.)	A (in.)	B (in.)	C (in.)	D (in.)
303-004	4-40	10-32	.250	.122	.064	.602	.065
303-006	6-32	1/4-20	.280	.148	.064	.062	.070
303-008	8-32	5/16-18	.290	.177	.064	.062	.075
303-3	10-24	3/8-16	.406	.201	.064	.070	.080
303-332	10-32	3/8-16	.406	.201	.064	.070	.080
303-4	1/4-20	7/16-14	.437	.261	.072	.075	.085
303-428	1/4-28	7/16-14	.437	.261	.072	.075	.085
303-5	5/16-18	1/2-13	.484	.323	.081	.080	.090
303-524	5/16-24	1/2-13	.484	.323	.081	.080	.090
303-6	3/8-16	9/16-12	.515	.386	.091	.085	.095
303-624	3/8-24	9/16-12	.515	.386	.091	.085	.095
303-7	7/16-14	5/8-11	.656	.447	.130	.110	.115
303-720	7/16-20	5/8-11	.656	.447	.130	.110	.115
303-8	1/2-13	3/4-10	.656	.510	.130	.110	.115
303-820	1/2-20	3/4-10	.656	.510	.130	.110	.115
303-10	5/8-11	7/8-9	.687	.640	.130	.125	.130
303-12	3/4-10	1-8	.781	.765	.130	.125	.130



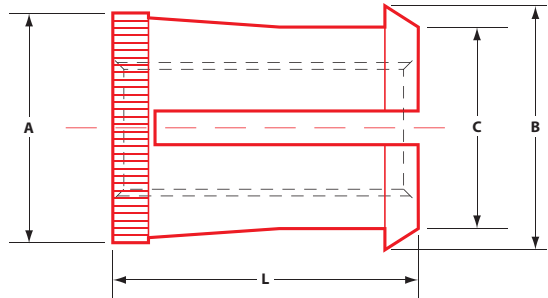
HEAVY WALL - CARBON STEEL THREAD INSERTS FOR METAL

Part Number	Internal Thread 2B	External Thread 2A	L (in.)	A (in.)	B (in.)	C (in.)	D (in.)
329-004	4-40	10-32	.250	.122	.064	.602	.065
329-006	6-32	1/4-20	.280	.148	.064	.062	.070
329-008	8-32	5/16-18	.290	.177	.064	.062	.075
329-3	10-24	3/8-16	.406	.201	.064	.070	.080
329-332	10-32	3/8-16	.406	.201	.064	.070	.080
329-4	1/4-20	7/16-14	.437	.261	.072	.075	.085
329-428	1/4-28	7/16-14	.437	.261	.072	.075	.085
329-5	5/16-18	1/2-13	.484	.323	.081	.080	.090
329-524	5/16-24	1/2-13	.484	.323	.081	.080	.090
329-6	3/8-16	9/16-12	.515	.386	.091	.085	.095
329-624	3/8-24	9/16-12	.515	.386	.091	.085	.095
329-7	7/16-14	5/8-11	.656	.447	.130	.110	.115
329-720	7/16-20	5/8-11	.656	.447	.130	.110	.115
329-8	1/2-13	3/4-10	.656	.510	.130	.110	.115
329-801	1/2-13	3/4-10	1.000	.510	.130	.110	.115
329-820	1/2-20	3/4-10	.656	.510	.130	.110	.115
329-9	9/16-12	3/4-10	.656	.578	.130	.110	.115
329-918	9/16-18	3/4-10	.656	.578	.130	.110	.115
329-10	5/8-11	7/8-9	.687	.640	.130	.125	.130
329-1018	5/8-11	7/8-9	1.125	.640	.130	.125	.130
329-10F	5/8-18	7/8-9	.687	.640	.130	.125	.130
329-12	3/4-10	1-8	.781	.765	.130	.125	.130
329-1216	3/4-16	1-8	.781	.765	.130	.125	.130
329-14	7/8-9	1-1/4-7	1.125	.890	.130	.135	.130
329-1414	7/8-14	1-1/4-7	1.125	.890	.130	.135	.130
329-16	1-8	1-3/8-12	1.250	1.020	.130	.135	.140
329-1614	1-14	1-3/8-12	1.250	1.020	.130	.135	.140

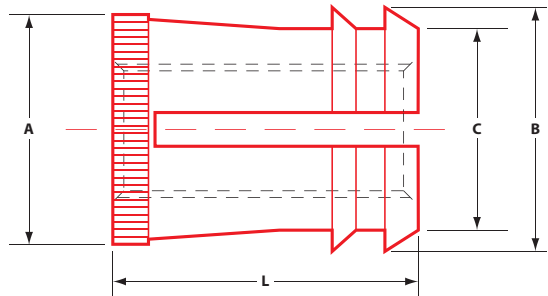


Thread Inserts
Material: C12L14
Tolerances $\pm .010$ "

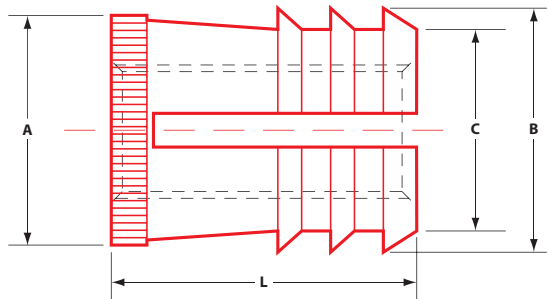
HEAVY WALL



170 Series



270 Series



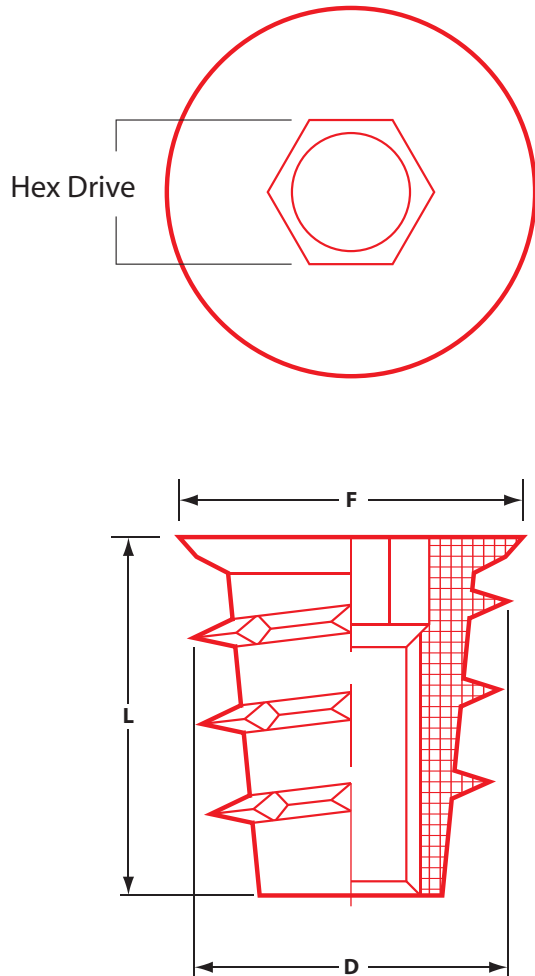
370 Series

FINSERTS

Part Number	Thread Size	L	A	B	C	Hole Size*
		(in.)	(in.)	(in.)	(in.)	(in.)
170-006-BR	6-32	.188	.210	.237	.189	.205
170-008-BR	8-32	.188	.236	.263	.215	.234
170-332-BR	10-32	.188	.263	.290	.242	.261
270-006-BR	6-32	.375	.210	.237	.189	.205
270-008-BR	8-32	.375	.236	.263	.215	.234
270-3-BR	10-24	.375	.263	.290	.242	.261
270-332-BR	10-32	.375	.263	.290	.242	.261
270-4-BR	1/4-20	.375	.330	.357	.309	.328
370-332-BR	10-32	.563	.347	.363	.318	.344
370-4-BR	1/4-20	.563	.409	.431	.381	.406
370-5-BR	5/16-18	.563	.471	.493	.443	.469

* Hole size requirements may vary depending on a number of factors, including material and tools.

We recommend that you test your particular application before ordering. We gladly supply free samples.



HEX DRIVE — FLANGED

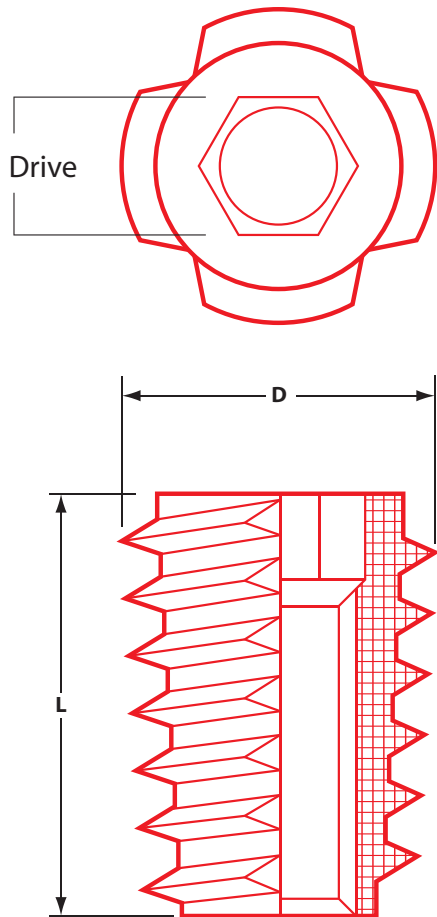
Part Number	Thread Size	L	L	F	D	Hole Size*	Hole Size*	Hex Drive
		(in.)	(mm.)	(in.)	(in.)	(in.)	(mm.)	
900832-10	8-32	.394	10	.335	.315	15/64	6	4
901024-11	10-24	.394	10	.453	.417	5/16	7	5
901024-20	10-24	.787	20	.453	.425	11/32	7	5
901032-11	10-32	.394	10	.453	.417	5/16	7	5
901032-13	10-32	.512	13	.453	.417	5/16	7	5
901032-20	10-32	.787	20	.453	.417	5/16	7	5
901420-13	1/4-20	.512	13	.492	.461	23/64	9	6
901420-20	1/4-20	.787	20	.492	.461	23/64	9	6
901420-25	1/4-20	.984	25	.492	.461	23/64	9	6
951618-13	5/16-18	.512	13	.571	.531	29/64	11	8
951618-25	5/16-18	.984	25	.571	.531	29/64	11	8
903816-13	3/8-16	.512	13	.630	.594	33/64	12	10
903816-25	3/8-16	.984	25	.625	.594	33/64	12	10

HEX DRIVE — FLANGED METRIC

Part Number	Thread Size	L	L	F	D	Hole Size*	Hole Size	Hex Drive
		(in.)	(mm.)	(in.)	(in.)	(in.)	(mm.)	
900610-13	M6-1.0	.512	13	.492	.461	23/64	9	6
900610-20	M6-1.0	.787	20	.492	.461	23/64	9	6
908125-13	M8-1.25	.512	13	.571	.531	29/64	11	8
908125-20	M8-1.25	.787	20	.571	.531	29/64	11	8

* Hole size requirements may vary depending on a number of factors, including material and tools.

We recommend that you test your particular application before ordering. We gladly supply free samples.



HEX DRIVE — FLUSH

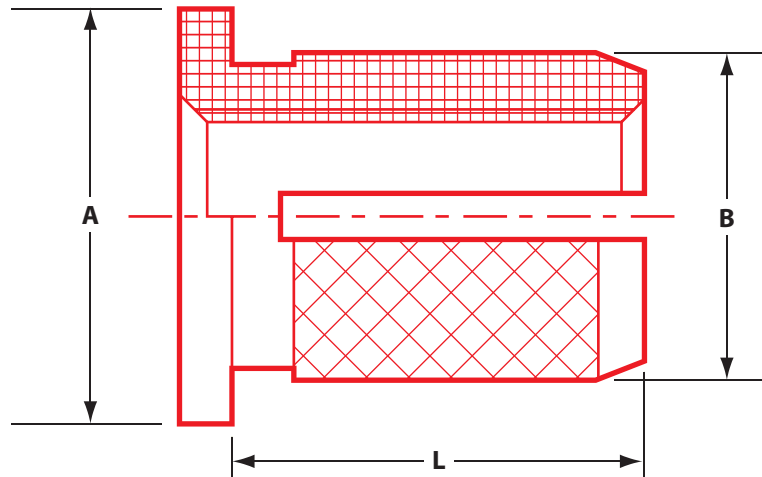
Part Number	Thread Size	L	L	D	Hole Size*	Hole Size*	Hex Drive
		(in.)	(mm.)	(in.)	(in.)	(mm.)	
800832-10	8-32	.394	10	.272	15/64	6	4
801024-13	10-24	.512	13	.429	5/16	7	5
801032-13	10-32	.512	13	.429	5/16	7	5
801420-13	1/4-20	.512	13	.453	23/64	9	6
801420-20	1/4-20	.789	20	.453	23/64	9	6
851618-20	5/16-18	.789	20	.563	29/64	11	8
851618-25	5/16-18	.984	25	.563	29/64	11	8

HEX DRIVE — FLUSH METRIC

Part Number	Thread Size	L	L	D	Hole Size*	Hole Size*	Hex Drive
		(in.)	(mm.)	(in.)	(in.)	(mm.)	
800610-13	M6-1.0	.512	13	11.5	23/64	9	6
800610-20	M6-1.0	.512	13	11.5	23/64	9	6
808125-13	M8-1.25	.789	20	14.3	29/64	11	8
808125-20	M8-1.25	.789	20	14.3	29/64	11	8

* Hole size requirements may vary depending on a number of factors, including material and tools.

We recommend that you test your particular application before ordering. We gladly supply free samples.



PRESS INSERT 260 SERIES — FLANGED BRASS

Part Number	Thread Size	L	A	B	Hole Size*	Minimum Depth
		(in.)	(in.)	(in.)	(in.)	(in.)
260-002-BR	2-56	.156	.187	.135	.125	.173
260-004-BR	4-40	.188	.218	.166	.156	.215
260-006-BR	6-32	.250	.249	.199	.188	.259
260-008-BR	8-32	.313	.280	.320	.219	.302
260-332-BR	10-32	.375	.312	.262	.250	.345
260-4-BR	1/4-20	.500	.375	.326	.313	.432
260-5-BR	5/16-18	.563	.437	.389	.375	.518
260-6-BR	3/8-16	.625	.500	.451	.438	.604

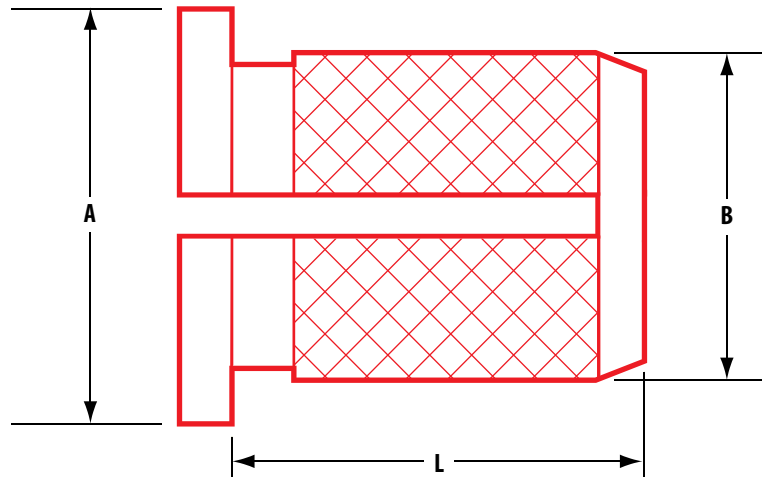
PRESS INSERT 260 SERIES — FLANGED STAINLESS STEEL

Part Number	Thread Size	L	A	B	Hole Size*	Minimum Depth
		(in.)	(in.)	(in.)	(in.)	(in.)
260-002-CR	2-56	.156	.187	.135	.125	.173
260-004-CR	4-40	.188	.218	.166	.156	.215
260-006-CR	6-32	.250	.249	.199	.188	.259
260-008-CR	8-32	.313	.280	.320	.219	.302
260-332-CR	10-32	.375	.312	.262	.250	.345
260-4-CR	1/4-20	.500	.375	.326	.313	.432

Flange thickness: .020" through 8-32; .031" 10-32 and over

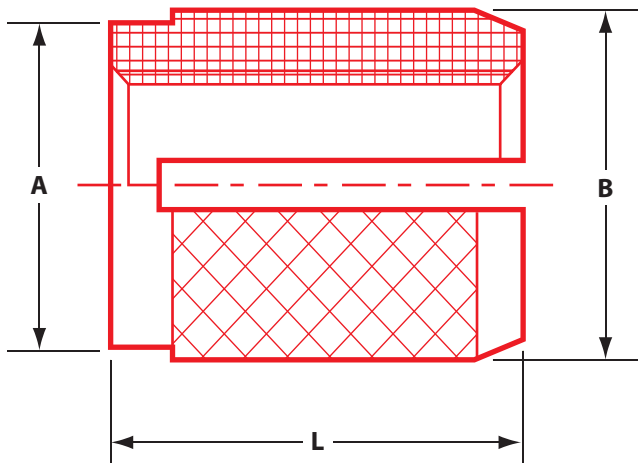
* Hole size requirements may vary depending on a number of factors, including material and tools.

We recommend that you test your particular application before ordering. We gladly supply free samples.



PRESS INSERT REVERSE SLOT SERIES - BRASS

Part Number	Thread Size	L	A	B	Hole Size*	Minimum Depth
		(in.)	(in.)	(in.)	(in.)	(in.)
260-002-RS	2-56	.156	.187	.135	.125	.173
260-004-RS	4-40	.188	.218	.166	.156	.215
260-006-RS	6-32	.250	.249	.199	.188	.259
260-008-RS	8-32	.313	.280	.320	.219	.302
260-332-RS	10-32	.375	.312	.262	.250	.345
260-4-RS	1/4-20	.500	.375	.326	.313	.432



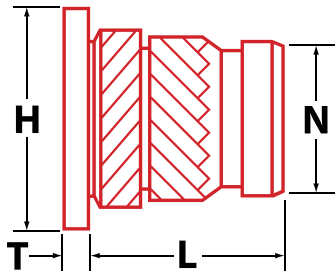
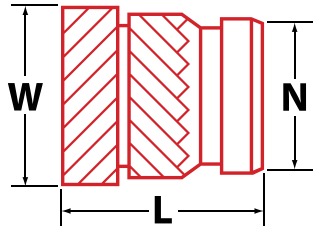
PRESS INSERT 240 SERIES — FLUSH BRASS

Part Number	Thread Size	L	A	B	Hole Size*	Minimum Depth
		(in.)	(in.)	(in.)	(in.)	(in.)
240-000-BR	0-80	.125	.094	.104	.094	.130
240-002-BR	2-56	.156	.125	.135	.125	.173
240-004-BR	4-40	.188	.156	.166	.156	.215
240-006-BR	6-32	.250	.187	.199	.188	.259
240-008-BR	8-32	.313	.218	.320	.219	.302
240-3-BR	10-24	.375	.250	.262	.250	.345
240-332-BR	10-32	.375	.250	.262	.250	.345
240-4-BR	1/4-20	.500	.312	.326	.313	.432
240-5-BR	5/16-18	.563	.375	.389	.375	.518
240-6-BR	3/8-16	.625	.437	.451	.438	.604
240-M3-BR	M3-0.5	.188	.156	.166	.156	.215
240-M3.5-BR	M3.5-0.6	.250	.187	.199	.188	.259
240-M4-BR	M4-0.7	.313	.218	.230	.219	.302
240-M5-BR	M5-0.8	.375	.250	.262	.250	.345
240-M6-BR	M6-1.0	.500	.312	.326	.313	.432

PRESS INSERT 240 SERIES — FLUSH STAINLESS STEEL

Part Number	Thread Size	L	A	B	Hole Size*	Minimum Depth
		(in.)	(in.)	(in.)	(in.)	(in.)
240-002-CR	2-56	.156	.125	.135	.125	.173
240-004-CR	4-40	.188	.156	.166	.156	.215
240-006-CR	6-32	.250	.187	.199	.188	.259
240-008-CR	8-32	.313	.218	.320	.219	.302
240-332-CR	10-32	.375	.250	.262	.250	.345
240-4-CR	1/4-20	.500	.312	.326	.313	.432
240-5-CR	5/16-18	.563	.375	.389	.375	.518
240-6-CR	3/8-16	.625	.437	.451	.438	.604

* Hole size requirements may vary depending on a number of factors, including material and tools. We recommend that you test your particular application before ordering. We gladly supply free samples.



STRAIGHT FLUSH

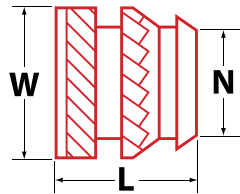
Part Number.	Internal Thread	Overall Length (L)	Insert Diameter (W)	Head Diameter (H)	Pilot Diameter (N)	Rec. Hole Size*	Minimum Wall Thickness
HI-002-WH	2-56	.157	.141	N/A	.123	.126	.051
HI-004-WH	4-40	.226	.181	N/A	.154	.157	.063
HI-006-WH	6-32	.281	.214	N/A	.185	.189	.071
HI-008-WH	8-32	.321	.248	N/A	.218	.220	.083
HI-124-WH	10-24	.375	.278	N/A	.249	.252	.102
HI-132-WH	10-32	.375	.278	N/A	.249	.252	.102
HI-420-WH	1/4-20	.500	.341	N/A	.312	.315	.130
HI-428-WH	1/4-28	.500	.341	N/A	.312	.315	.130
HI-518-WH	5/16-18	.500	.403	N/A	.374	.378	.177
HI-524-WH	5/16-24	.500	.403	N/A	.374	.378	.177
HI-316-WH	3/8-16	.500	.494	N/A	.465	.469	.236
HI-324-WH	3/8-24	.500	.494	N/A	.465	.469	.236

* Hole size requirements may vary depending on a number of factors, including material and tools. We recommend that you test your particular application before ordering. We gladly supply free samples."

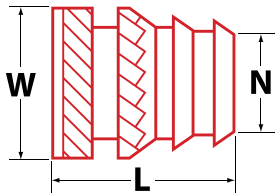
STRAIGHT FLANGED

Part Number.	Internal Thread	Overall Length (L+T)	Insert Diameter (W)	Head Diameter (H)	Pilot Diameter (N)	Rec. Hole Size*	Minimum Wall Thickness
FL-256-HI	2-56	.178	.141	.187	.123	.126	.051
FL-440-HI	4-40	.250	.181	.218	.154	.157	.063
FL-632-HI	6-32	.311	.214	.250	.185	.189	.071
FL-832-HI	8-32	.357	.248	.281	.218	.220	.083
FL-124-HI	10-24	.418	.278	.312	.249	.252	.102
FL-132-HI	10-32	.418	.278	.312	.249	.252	.102
FL-420-HI	1/4-20	.553	.341	.375	.312	.315	.130
FL-428-HI	1/4-28	.553	.341	.375	.312	.315	.130
FL-518-HI	5/16-18	.553	.403	.437	.374	.378	.177
FL316-HI	3/8-16	.563	.494	.551	.465	.469	.236

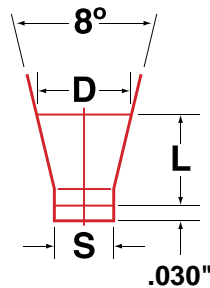
* Hole size requirements may vary depending on a number of factors, including material and tools. We recommend that you test your particular application before ordering. We gladly supply free samples."



SINGLE VANE
SERIES CLH31



DOUBLE VANE
SERIES CLH32



TAPERED SINGLE VANE

Part Number.	Internal Thread	Overall Length (L)	Insert Diameter (W)	Pilot Diameter (N)	Rec. Hole Size* (D)	Rec. Hole Size* (S)	Minimum Wall Thickness
TH-002-SV	2-56	.115	.136	.122	.123	.118	.080
TH-004-SV	4-40	.135	.172	.157	.159	.153	.093
TH-006-SV	6-32	.150	.220	.203	.206	.199	.116
TH-008-SV	8-32	.185	.250	.230	.234	.226	.133
TH-124-SV	10-24	.225	.296	.272	.277	.267	.159
TH-132-SV	10-32	.225	.296	.272	.277	.267	.159
TH-420-SV	1/4-20	.300	.375	.354	.363	.349	.194
TH-428-SV	1/4-28	.300	.375	.354	.363	.349	.194
TH-518-SV	5/16-18	.335	.469	.439	.448	.431	.245
TH-316-SV	3/8-16	.375	.563	.530	.540	.523	.293
TH-324-SV	3/8-24	.375	.563	.530	.540	.523	.293
TH-M25-SV	M2.5-0.4	.135	.172	.157	.159	.153	.093
TH-M30-SV	M3-0.5	.150	.220	.203	.206	.199	.116
TH-M40-SV	M4-0.7	.185	.250	.230	.234	.226	.133
TH-M50-SV	M5-0.8	.265	.328	.308	.315	.303	.171
TH-M60-SV	M6-1.0	.300	.375	.354	.363	.349	.194

* Hole size requirements may vary depending on a number of factors, including material and tools. We recommend that you test your particular application before ordering. We gladly supply free samples.

TAPERED DOUBLE VANE

Part Number.	Internal Thread	Overall Length (L)	Insert Diameter (W)	Pilot Diameter (N)	Rec. Hole Size* (D)	Rec. Hole Size* (S)	Minimum Wall Thickness
DV-002-TH	2-56	.188	.136	.115	.123	.107	.080
DV-004-TH	4-40	.219	.172	.144	.159	.141	.093
DV-006-TH	6-32	.250	.220	.190	.206	.185	.116
DV-008-TH	8-32	.312	.250	.212	.234	.208	.133
DV-124-TH	10-24	.375	.297	.251	.277	.246	.159
DV-132-TH	10-32	.375	.297	.251	.277	.246	.159
DV-420-TH	1/4-20	.500	.375	.332	.363	.321	.194
DV-428-TH	1/4-28	.500	.375	.332	.363	.321	.194
DV-518-TH	5/16-18	.562	.469	.406	.448	.401	.245
DV-316-TH	3/8-16	.625	.563	.493	.540	.488	.293
DV-M25-TH	M2.5-0.4	.219	.172	.144	.159	.141	.093
DV-M30-TH	M3-0.5	.250	.220	.190	.206	.185	.116
DV-M40-TH	M4-0.7	.312	.250	.212	.234	.208	.133
DV-M50-TH	Mds5-0.8	.438	.328	.283	.315	.278	.171
DV-M60-TH	M6-1.0	.500	.375	.332	.363	.321	.194

* Hole size requirements may vary depending on a number of factors, including material and tools. We recommend that you test your particular application before ordering. We gladly supply free samples.



Thread Inserts **PRESS INSERT-TAPERED**
Material: Brass
Tolerances: +/- .010"