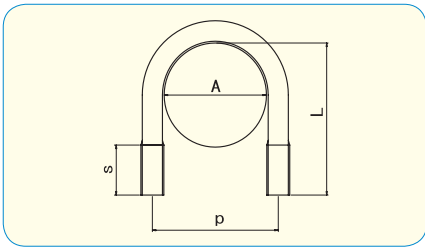


U BOLT



How to order or inquire: R830-UB-material code diameter
 Example: R830-UB-A2 15A
 Material codes: A2 for Stainless Steel A2

● **Material**

Stainless Steel A2

		A	pcs / Box			
		pipe dia mm	M6	M8	M10	M12
8A	for 1/4	13.2	2000			
10A	3/8	16.7	1600	1	1	
15A	1/2	21.2	1400	1	1	
20A	3/4	27.2	1100	1	1	
25A	1"	34.0	1	1	1	
32A	1 1/4	42.7	1	1	1	
40A	1 1/2	48.6	1	1	1	
50A	2"	60.5	1	1	1	
65A	2 1/2	76.3		1	1	1
80A	3"	89.1		1	1	1
100A	4"	114.3			1	1
125A	5"	139.8			1	1
150A	6"	165.2			1	1
200A	8"	216.3				1
250A	10"	267.4				1
300A	12"	318.5				1

How to order or inquire: R830-UB-material code diameter
 Example: R830-UB-316L 15A
 Material codes: 316L for Stainless Steel 316L

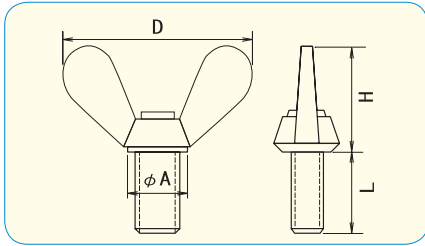
● **Material**

SUS 316L Stainless Steel A4

		A	pcs / Box					
		pipe dia mm	M6	M8	M10	M12	M16	M20
8A	for 1/4	13.2	50					
10A	3/8	16.7	50					
15A	1/2	21.2	50	30	20			
20A	3/4	27.2	50	30	20			
25A	1"	34.0	50	30	20			
32A	1 1/4	42.7	50	30	20			
40A	1 1/2	48.6	50	30	20			
50A	2"	60.5	50	30	20	10		
65A	2 1/2	76.3	50	30	20	10		
80A	3"	89.1	50	30	20	10		
100A	4"	114.3		30	20	10	5	
125A	5"	139.8			20	10	5	
150A	6"	165.2			20	10	5	
200A	8"	216.3				10	5	3
250A	10"	267.4					5	3
300A	12"	318.5					5	3
350A	14"	355.6						3

NOTE: Zinc 3Cr. Plated and Black 3Cr. Plated are RoHS compliant trivalent finishes

WING BOLT JIS B1184



- **Material - plating**
Steel / Zinc 3Cr. Plated
Steel / Zinc Black 3Cr. Plated



RoHS Directive Compliance



How to order or inquire: R830-B1184-finish code diameter x length

Example: R830-B1184-CR3 6x20

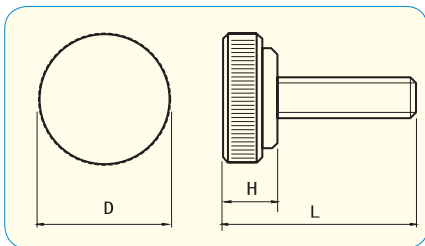
Finish codes: CR3 for Zinc 3Cr. Plated, CR3B for Black 3Cr. Plated

	M6	M8	M10
A	12	15	19
D	32	40	50
H	16	20	25

pcs / Box			
L \ d	M6	M8	M10
10	300	* 150	
12	300	* 150	
15	250	* 150	* 80
20	250	* 120	* 70
25	200	* 120	* 70
30	200	* 120	* 60
35	170	* 100	* 60
40	170	* 80	* 60
45	150	* 80	* 50
50	150	* 80	* 50

* ... Zinc 3Cr. Plated only

THUMB SCREWS



- **Material**
Stainless Steel A2

- **Color**
Black , Red



RoHS Directive Compliance

How to order or inquire: R830-THBS-material code diameter x length/knob color

Example: R830-THBS-A2 4x10/black

Material codes: A2 for Stainless Steel A2

	M4	M5	M6
D	13	16	19
H	5.5	6.5	7.5

pcs / Box			
L \ d	M4	M5	M6
8	* 250		
10	* 250		
12		* 200	200
15		* 200	
20			* 100
35		200	

* ... Black only