

**PC (Polycarbonate)  
HEX SOCKET SET SCREW WITH SLOT**

Please order this product by series number R830-551LX-DIAMETER x LENGTH

Example: R830-551LX-M4x5

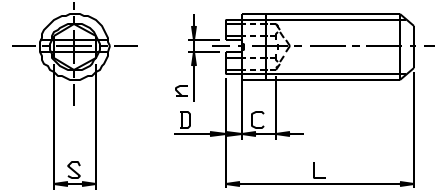
USD/100pcs

	M3	M4
n	0.4	0.6
D	0.9	1.2
s	0.9	1.3

L	M3		M4	
	unit price	box q'ty	unit price	box q'ty
4			\$16.50	1,000
5	\$15.15	1,000	\$16.65	1,000
6	\$15.30	1,000		
8	\$15.45	1,000	\$18.15	1,000
10	\$15.60	1,000	\$18.30	1,000

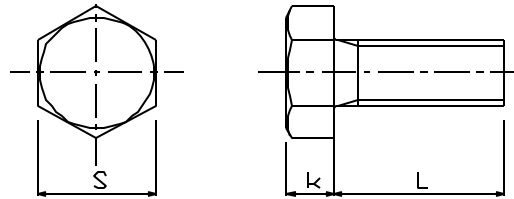
**MARYLAND METRICS**  
 phones: (410)358-3130 (800)638-1830 faxes: (410)358-3142 (800)872-9329  
 URL: <http://mdmetric.com> E-mail: [techinfo@mdmetric.com](mailto:techinfo@mdmetric.com)  
 P.O.Box 261 Owings Mills, MD 21117 USA  
**FASTENER CATALOG - CHAPTER S3**

Many items in this chapter are not stocked in the US. Please allow adequate lead time for delivery and factory minimum order requirements.



**PC (Polycarbonate)  
HEX CAP SCREW**

	M4	M5	M6	M8	M10	M12
s	7	8	10	13	17	19
k	2.8	3.5	4	5.5	7	8



Please order this product by series number R830-933LX-DIAMETER x LENGTH

Example: R830-933LX-M4x10

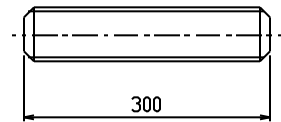
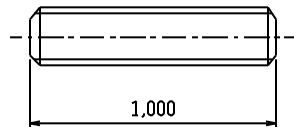
USD/100pcs

L	M4		M5		M6		M8		M10		M12	
	unit price	box q'ty	unit price	box q'ty	unit price	box q'ty	unit price	box q'ty	unit price	box q'ty	unit price	box q'ty
10	\$9.60	1,000	\$8.55	1,000	\$18.00	500	\$29.70	250				
12	\$11.70	1,000	\$10.35	1,000	\$19.20	500	\$29.70	250				
15	\$14.70	1,000	\$12.30	500	\$21.15	500	\$31.50	200				
20	\$17.10	500	\$15.15	500	\$23.25	250	\$33.90	200	\$78.00	100*	\$132.00	50*
25	\$19.50	500	\$21.60	500	\$24.75	250	\$39.60	100	\$78.00	100*	\$132.00	50*
30			\$36.90	250	\$30.30	250	\$46.20	100	\$81.00	50*	\$132.00	50*
35			\$47.85	250	\$50.85	200	\$60.00	100*	\$84.00	50*	\$135.00	50*
40					\$50.85	200	\$61.80	100*	\$90.00	50*	\$144.00	50*
45											\$150.00	25*
50							\$94.50	50*	\$132.00	50*	\$150.00	25*
60											\$168.00	25*
70											\$168.00	25*

note: M8x50 and M10x50 are partial thread. (thread length: 25mm)

\* white color

**PC (Polycarbonate)  
THREADED RODS**



Please order this product by series number

R830-975LX-DIAMETER x LENGTH

Example: R830-975LX-M8x1000

USD/100pcs

	M8	M10	M12	M16
pitch	1.25	1.5	1.75	2
box q'ty	1	1	1	1
USD/100pcs	3,600	4,500	5,400	8,700

Please order this product by series number

R830-975LX-DIAMETER x LENGTH

Example: R830-975LX-M8x300

USD/100pcs

	M8	M10	M12	W3/8
pitch	1.25	1.5	1.75	
box q'ty	1	1	1	1
USD/100pcs	1,200	1,260	1,440	1,260

**PC (Polycarbonate)**

**HEX NUT**

Please order this product by series number R830-555LX-DIAMETER

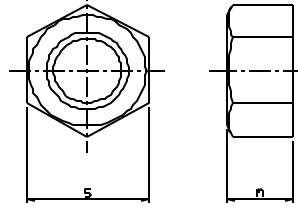
Example: R830-555LX-M4

USD/100pcs

	s	m	box q'ty	1-9 box	10 & above
M2	4	1.6	1,000	\$24.00	call us
M2.6	5	2	1,000	\$24.00	call us
M3	5.5	2.4	1,000	\$7.35	call us
M4	7	3.2	1,000	\$7.80	call us
M5	8	4	1,000	\$11.40	call us
M6	10	5	500	\$12.30	call us
M8	13	6.5	250	\$15.60	call us
M10	17	8	200	\$33.90	call us
M12	19	10	100	\$54.00	call us
W3/8	17	8	200	\$36.00	call us

**MARYLAND METRICS**  
 phones: (410)358-3130 (800)638-1830 faxes: (410)358-3142 (800)872-9329  
 URL: <http://mdmetric.com> E-mail: [techinfo@mdmetric.com](mailto:techinfo@mdmetric.com)  
 P.O.Box 261 Owings Mills, MD 21117 USA  
**FASTENER CATALOG - CHAPTER S3**

Many items in this chapter are not stocked in the US. Please allow adequate lead time for delivery and factory minimum order requirements.



price for white color

USD/100pcs

	s	m	box q'ty	1-9 box	10 & above
M8	13	6.5	250	\$20.25	call us
M10	17	8	200	\$27.90	call us
M12	19	10	100	\$42.00	call us
W3/8	17	8	200	\$36.00	call us

**PC (Polycarbonate)**

**PHILLIPS PAN HEAD MACHINE SCREW**

	M1.7	M2	M2.6	M3	M4	M5	M6	M8
dk	2.5	3.5	4.5	5.5	7	9	10.5	14
k	0.5	1.3	1.7	2	2.6	3.3	3.9	5.2

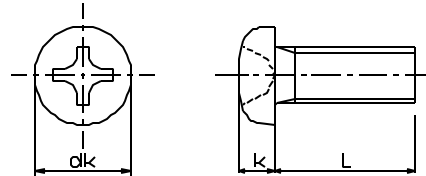
Please order this product by series number R830-B1111LX-DIAMETER x LENGTH

Example: R830-B1111LX-M4x10

USD/100pcs

L	M1.7		M2		M2.6	
	unit price	box q'ty	unit price	box q'ty	unit price	box q'ty
3	\$6.00	1,000	\$4.35	1,000	\$4.35	1,000
4	\$6.00	1,000	\$4.35	1,000	\$4.35	1,000
5			\$4.35	1,000	\$4.35	1,000
6			\$4.35	1,000	\$4.35	1,000
8			\$4.50	1,000	\$4.50	1,000
10			\$6.60	1,000	\$4.80	1,000
12			\$6.60	1,000	\$5.25	1,000
15					\$7.95	1,000

\* M1.7: black color



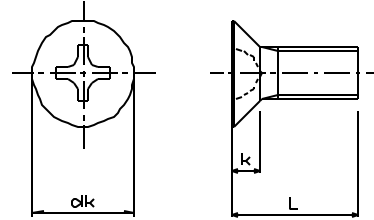
USD/100pcs

L	M3		M4		M5		M6		M8	
	unit price	box q'ty	unit price	box q'ty	unit price	box q'ty	unit price	box q'ty	unit price	box q'ty
4	\$4.35	1,000								
5	\$4.35	1,000	\$5.25	1,000						
6	\$4.35	1,000	\$5.25	1,000	\$7.95	1,000				
8	\$4.50	1,000	\$6.00	1,000	\$7.95	1,000				
10	\$4.95	1,000	\$6.30	1,000	\$8.55	1,000	\$18.00	500		
12	\$5.25	1,000	\$7.80	1,000	\$10.35	1,000	\$19.20	500	\$29.70	250
15	\$7.95	1,000	\$10.35	1,000	\$12.30	500	\$21.15	500	\$31.50	250
16	\$9.90	1,000	\$10.50	1,000	\$13.50	500				
18	\$9.90	1,000	\$10.95	1,000	\$14.55	500				
20	\$10.20	1,000	\$11.40	1,000	\$15.15	500	\$23.25	250	\$33.90	200
25	\$13.50	1,000	\$16.65	500	\$21.60	500	\$24.75	250	\$39.60	200
30	\$18.90	1,000	\$20.25	500	\$36.90	250	\$30.30	250	\$46.20	100
35					\$47.85	250	\$50.85	200		
40							\$50.85	200	\$61.80	100

Due to present currency values the original 2002 prices shown in this chapter need to be multiplied by 1.5

**PC (Polycarbonate)  
PHILLIPS FLAT HEAD MACHINE SCREW**

	M2	M2.6	M3	M4	M5	M6	M8
dk	4	5.2	6	8	10	12	16
k	1.2	1.5	1.75	2.3	2.8	3.4	4.4



Please order this product by series number R830-B1111FH/LX-DIAMETER x LENGTH

Example: R830-B1111FH/LX-M4x10

USD/100pcs

L	M2		M2.6		M3		M4		M5		M6		M8	
	unit price	box q'ty	unit price	box q'ty	unit price	box q'ty	unit price	box q'ty	unit price	box q'ty	unit price	box q'ty	unit price	box q'ty
4	\$4.35	1,000	\$4.35	1,000	\$4.35	1,000								
5	\$4.35	1,000	\$4.35	1,000	\$4.35	1,000								
6	\$4.35	1,000	\$4.35	1,000	\$4.35	1,000	\$5.25	1,000						
8	\$4.50	1,000	\$4.50	1,000	\$4.50	1,000	\$6.00	1,000	\$7.95	1,000				
10			\$4.80	1,000	\$4.95	1,000	\$6.30	1,000	\$8.55	1,000	\$18.00	500	\$29.70	250
12			\$5.25	1,000	\$5.25	1,000	\$7.80	1,000	\$10.35	1,000	\$19.20	500		
14							\$10.35	1,000						
15					\$7.95	1,000	\$10.35	1,000	\$12.30	500	21.15	500	\$31.50	250
16					\$9.90	1,000	\$10.50	1,000						
18					\$9.90	1,000	\$10.95	1,000						
20					\$10.20	1,000	\$11.40	1,000	\$15.15	500	\$23.25	250	\$33.90	200
25					\$13.50	1,000	\$16.65	500	\$21.60	500	\$24.75	250	\$39.60	200
30											\$30.30	250	\$46.20	100
35											\$50.85	200		

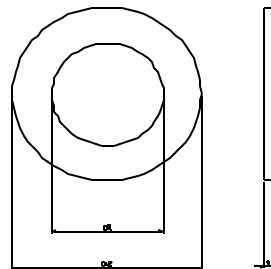
**PC (Polycarbonate)  
ROUND WASHER**

Please order this product by series number R830-125LX-DIAMETER

Example: R830-125LX-M4

USD/100pcs

	d2	t	box q'ty	1-9 box	10 & above
M2	4	0.5	1,000	\$2.07	call us
M2.6	6	0.5	1,000	\$2.49	call us
M3	8	0.8	1,000	\$2.55	call us
M3	10	0.8	1,000	\$2.55	call us
M4	10	0.8	1,000	\$2.76	call us
M5	12	0.8	1,000	\$3.30	call us
M6	13	1	1,000	\$4.08	call us
M8	18	1.6	500	\$6.81	call us
M10	22	1.6	500	\$14.55	call us
M12	24	2.5	500	\$16.50	call us



**MARYLAND METRICS**  
 phones: (410)358-3130 (800)638-1830 faxes: (410)358-3142 (800)872-9329  
 URL: <http://mdmetric.com> E-mail: [techinfo@mdmetric.com](mailto:techinfo@mdmetric.com)  
 P.O.Box 261 Owings Mills, MD 21117 USA  
**FASTENER CATALOG - CHAPTER S3**

Many items in this chapter are not stocked in the US. Please allow adequate lead time for delivery and factory minimum order requirements.