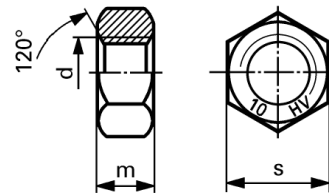


# 10

Heavy hex nuts, steel  
for high-strength structural bolting



DIN 6915 / EN 14399-4

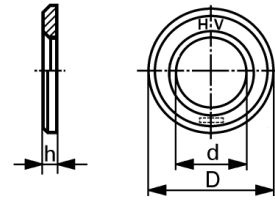
d	s	m	plain	hot dip galvanized coated with Molykote
M	quantity		100	100
12	22	10	47.-	48.-
16	27	13	68.-	72.-
20	32	16	108.-	115.-
22	36	18	132.-	145.-
24	41	19	180.-	198.-
27	46	22	281.-	305.-
30	50	24	425.-	455.-
36	60	29	805.-	860.-

# 10

Flat washers, steel  
for high-strength structural bolting

hardened 295-350 HV

DIN 6916 / EN 14399-6

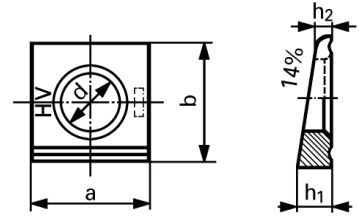


	d	D	h ±	plain	Hot dip galvanized
M quantity				100	100
12	13	24	3	23.50	26.-
16	17	30	4	33.25	38.75
20	21	37	4	41.50	50.-
22	23	39	4	51.50	61.50
24	25	44	4	56.50	67.-
27	28	50	5	97.-	122.-
30	31	56	5	223.-	262.-
36	37	66	6	375.-	396.-

# 10

Square tapered washers, steel  
for high-strength structural bolting

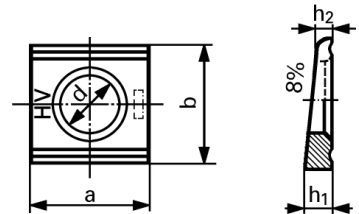
## DIN 6917



for T-sections

bolts	d	a	b	h1	h2	plain	Hot dip galvanized
M quantity						100	100
12	13	26	30	6,2	2	153.-	158.-
16	17	32	36	7,5	2,5	172.-	181.-
20	21	40	44	9,2	3	270.-	290.-
22	23	44	50	10	3	334.-	358.-
24	25	56	56	10,8	3	465.-	505.-
27	28	56	56	10,8	3	505.-	540.-
30	31	62	62	11,7	3	895.-	940.-

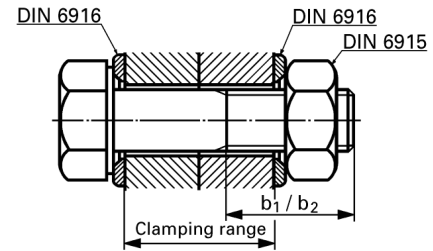
## DIN 6918



for U-sections

bolts	d	a	b	h1	h2	plain	Hot dip galvanized
M quantity						100	100
12	13	26	30	4,9	2,5	149.-	155.-
16	17	32	36	5,9	3	177.-	196.-
20	21	40	44	7	3,5	238.-	252.-
22	23	44	50	8	4	310.-	332.-
24	25	56	56	8,5	4	450.-	460.-
27	28	56	56	8,5	4	485.-	480.-
30	31	62	62	9	4	840.-	885.-

## Clamping range of heavy hex bolts HV



d	M 12	M 16	M 20	M 22	M 24	M 27	M 30	M 36
b1	21	26	31	32	34	37	40	48
b2	23	28	33	34	37	39	42	50
L	Clamping range							
30	6 to 10							
35	11 to 15							
40	16 to 20	10 to 14						
45	21 to 23	15 to 19	10 to 14					
50	24 to 28	20 to 24	15 to 19	14 to 18				
55	29 to 33	25 to 29	20 to 24	19 to 23				
60	34 to 38	30 to 34	25 to 29	24 to 28	22 to 26			
65	39 to 43	35 to 39	30 to 34	29 to 33	27 to 31			
70	44 to 48	40 to 44	35 to 39	34 to 38	32 to 36	28 to 32		
75	49 to 53	45 to 47	40 to 44	39 to 43	37 to 41	33 to 37	29 to 33	
80	54 to 58	48 to 52	45 to 49	44 to 48	42 to 46	38 to 42	34 to 38	
85	59 to 63	53 to 57	50 to 54	49 to 53	47 to 51	43 to 47	39 to 43	31 to 35
90	64 to 68	58 to 62	55 to 57	54 to 56	52 to 53	48 to 52	44 to 48	36 to 40
95	69 to 73	63 to 67	58 to 62	57 to 61	54 to 58	53 to 57	49 to 53	41 to 45
100		68 to 72	63 to 67	62 to 66	59 to 63	58 to 60	54 to 56	46 to 48
105		73 to 77	68 to 72	67 to 71	64 to 68	61 to 65	57 to 61	49 to 53
110		78 to 82	73 to 77	72 to 76	69 to 73	66 to 70	62 to 66	54 to 58
115		83 to 87	78 to 82	77 to 81	74 to 78	71 to 75	67 to 71	59 to 63
120		88 to 92	83 to 87	82 to 86	79 to 83	76 to 80	72 to 76	64 to 68
125		93 to 97	88 to 92	87 to 91	84 to 88	81 to 85	77 to 81	69 to 73
130		98 to 102	93 to 97	92 to 96	89 to 93	86 to 90	82 to 86	74 to 78
135			98 to 102	97 to 101	94 to 98	91 to 95	87 to 91	79 to 83
140			103 to 107	102 to 106	99 to 103	96 to 100	92 to 96	84 to 88
145			108 to 112	107 to 111	104 to 108	101 to 105	97 to 101	89 to 93
150			113 to 117	112 to 116	109 to 113	106 to 110	102 to 106	94 to 98
155			118 to 122	117 to 121	114 to 118	111 to 115	107 to 111	99 to 103
160				122 to 127	119 to 123	116 to 120	112 to 116	104 to 108
165				128 to 131	124 to 128	121 to 125	117 to 121	109 to 113
170					129 to 133	126 to 130	122 to 126	114 to 118
175					134 to 138	131 to 135	127 to 131	119 to 123
180					139 to 143	136 to 140	132 to 136	124 to 128
185					144 to 148	141 to 145	137 to 141	129 to 133
190					149 to 153	146 to 150	142 to 146	134 to 138
195					154 to 158	151 to 155	147 to 151	139 to 143
200						156 to 160	152 to 156	144 to 148

----- Above line = b1

----- Below line = b2