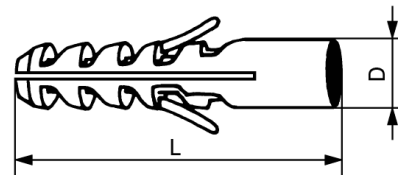

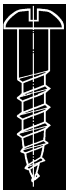


Nylon plugs



## K 221 TU S



D	quantity	L			pull-out load in N* (concrete B 250)		100	1000	10 000
					perm.	max.			
5		25	5 x 35	∅ 2,6- 4	460	2300	5.-	3.15	2.65
6		30	6 x 40	3,5- 5	680	3400	6.20	4.60	4.-
7		35	7 x 45	4,5- 5,5	800	4000	7.60	6.20	5.50
8		40	8 x 55	5 - 6	960	4800	8.80	7.20	6.20
10		60	10 x 75	6 - 8	1960	9800	17.-	12.50	11.30
10		**50	10 x 65	6 - 8	1650	8200	17.50	13.-	11.80
12		60	12 x 75	8 - 10	2280	11400	24.75	19.30	17.40
14		80	14 x 100	10 - 12	3840	19200	42.50	34.75	29.-
16		80	16 x 100	12 - 14	5050	25200	63.-	50.50	45.-
20		90	20 x 120	14 - 16	8000	40000	219.-	188.-	179.-

TUFLEX MS

## K 221 TU M

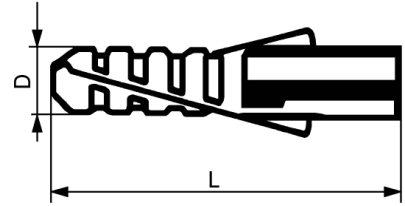
D	quantity	L			pull-out load in N (concrete B 250)		100	1000	10 000
					perm.	max.			
(5)		30	7 x 40	M 5	220	1100	38.-	28.70	25.20
6		40	8 x 55	M 6	420	2100	47.25	36.75	32.50
8		50	10 x 70	M 8	760	3800	68.50	52.-	39.50
10		70	14 x 90	M 10	920	4600	151.-	125.-	108.-
12		80	16 x 100	M 12	1480	7400	227.-	189.-	161.-



\* Values are about 30% lower if chipboard screws are used

\*\* for that size note the length «L»

Nylon spiral plugs DELTA

K 221 DE



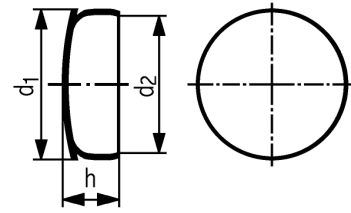
D	quantity	L			pull-out load in N* (concrete B 250)				
					perm.	max.	100	1000	10 000
4		19	4 x 30	2,2- 2	240	1200	6.10	4.70	3.95
5		24	5 x 35	3 - 4	360	1800	6.50	4.95	4.10
6		29	6 x 40	3,5- 5	840	4200	9.40	7.20	5.90
7		34	7 x 45	4,5- 5	740	3700	11.50	9.60	8.-
8		38	8 x 55	5 - 6	820	4100	12.50	9.80	8.20
10		48	10 x 65	6 - 8	1400	7000	20.50	18.40	16.95
12		58	12 x 75	8 -10	2100	10500	31.10	26.45	25.80
15		75	15 x 100	10 -12	4200	21000	74.50	58.-	53.-

\* Values are about 30% lower if chipboard screws are used

# POLYETHYLENE

Protection plugs, white

K 295



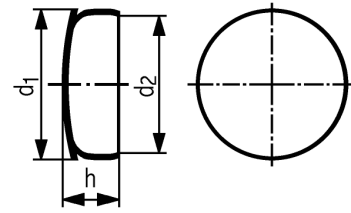
No. quantity	d1	d2	h	hex	plugs	plain	
						100	1000+
035	5,5	2,5	6	M 4	M 2,6	13.50	8.90
044	6,5	3	6	M 5		13.60	8.90
052	7,2	3,8	7	M 6	M 4	13.60	8.90
062	8,2	4,8	7	M 7	M 5	13.60	8.90
073	9,3	5,7	9,5	M 8	M 6	13.60	9.-
088	11	7,4	9,5	M 10		14.20	9.40
093	11,3	7,8	9,5	M 10 x 1	M 8	14.90	9.90
105	12,7	9	9,5	M 12		14.90	9.90
109	13	9,5	9,5	M 12 x 1,5	M 10	15.40	10.30
119	14	9,7	9,5	R 1/4"		15.40	10.30
124	14,5	10,9	9,5	M 14		15.50	10.40
128	15	11,3	9,5	M 14 x 1,5		15.50	10.40
133	15,5	11,8	9,5	M 14 x 1	M 12	15.50	10.40
143	16,5	12,7	9,5	M 16		16.10	10.80
149	17	13,3	9,5	M 16 x 1,5		17.20	11.70
152	17,5	13,6	9,5	M 16 x 1	M 14	17.20	11.70
158	18	14,2	9,5	M 18		17.20	11.70
163	18,5	14,5	9,5	M 18 x 2	M 15	17.20	11.70
169	19	15,1	9,5	M 18 x 1,5		17.30	11.80
172	19,3	15,4	9,5	M 18 x 1	M 16	17.30	11.80
178	20	16	9,5	M 20		17.30	11.80
183	20,5	16,5	9,5	M 20 x 2	M 17	18.40	12.60
188	21	17	9,5	M 20 x 1,5		18.40	12.60
193	21,5	17,4	9,5	M 20 x 1	M 18	18.40	12.60
200	22	18,1	9,5	M 22		18.40	12.60
209	23	19	9,5	M 22 x 1,5		18.60	12.80
214	23,5	19,5	9,5	M 22 x 1	M 20	18.60	12.80

+ 10% discount for 10000 pieces per item

# POLYETHYLENE

Protection plugs, white

K 295



No. quantity	d1	d2	h	hex	plugs	plain	
						100	1000+
225	24,5	20	17	M 24 x 2		20.25	14.-
228	25	20,8	9	M 24 x 1,5		20.25	14.-
234	25,5	21,4	9,5	M 24 x 1	M 22	20.75	14.40
248	27,5	22,7	9,5	M 25 x 1		20.75	14.40
257	29	23,7	9,5	M 26 x 1,5		23.-	16.10
268	29	24,8	9,5	M 28 x 1,5	M 25	24.75	17.60
288	31	25,8	20	M 30 x 2	M 26	24.75	17.60
310	34	28	9,5	M 33 x 2		25.50	18.-
317	34	29,7	9,5	M 33 x 1,5	M 30	28.-	20.-
322	34	29,6	20	M 36		34.25	24.75
348	37	32,8	9,5	M 36 x 1,5		34.25	24.75
355	37	32,5	20	R 1 1/8"	M 33	37.50	28.25
368	39	34,8	9,5	M 38 x 1,5	M 35	39.-	29.50
388	41	36,6	9,5	M 40 x 1,5		39.-	29.50
405	42,5	37,5	9,5	M 42 x 2	M 38	40.-	30.25
445	46	41,5	20		M 42	41.50	31.75
460	47,5	43	9,5	M 48 x 3		44.-	33.50
477	49	44,7	9,5	M 52	M 45	45.-	34.50
500	51,5	47	20	M 52 x 2	R 1 1/2"	47.-	36.-
520	54,5	49	9,5	R 1 3/4"		47.-	36.-
547	60	51,7	9,5		M 52	49.-	37.50
560	58	53	22		R 1 3/4"	51.50	39.50
580	61	55	12,5	R 2"		52.50	40.50
615	63	58,5	22		R 2"	71.50	56.-
725	78,5	68	18,5	R 2 1/2"		85.-	66.50

+ 10% discount for 10000 pieces per item

**Maryland Metrics Fastener Catalog - Chapter B** Owings Mills, MD 21117 USA

phones: (410)358-3130 (800)638-1830 faxes: (410)358-3142 (800)872-9329 e-mail: techinfo@mdmetric.com  
copyright 2003 maryland metrics/kyburz ch