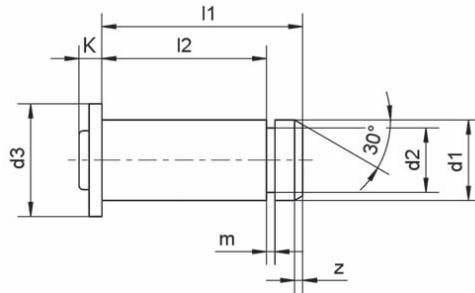


Bolts with riveted head (clevis pins)

for retainers suitable for clevis



head version at
manufacturer's choice



STAINLESS STEEL

mbo standard 07
BEN 1.4305

Example for ordering:

Bolt version BEN of diameter $d1 = 10$ mm, stainless steel version, length $l1 = 25$ mm and length $l2 = 20.5$ mm Bolt; BEN 10 x 25 x 20.5
Order number: 10 77 4567 0010

mbo BEN identifier	Order number	Suitable retainer DIN 6799 stainless steel ²⁾	Nom. size $d1$ h11	Head diameter $d3$	Length		$\approx K$	$d2$ h11	m	z	Mass (kg) per 100 pcs
					$l1$ js 15	$l2$ +0.3					
4 x 10.5 x 8.5*	10 07 4305 0004	3.2	4	6	10.5	8.5	1	3.2	0.64	0.5	0.12
5 x 13 x 10.5*	10 07 4305 0005	4	5	8	13	10.5	1.5	4	0.74	0.5	0.24
6 x 15.5 x 12.5 ¹⁾	10 77 4567 0006	5	6	9	15.5	12.5	2	5	0.74	0.75	0.42
8 x 20 x 16.5 ¹⁾	10 77 4567 0008	6	8	12	20	16.5	2.5	6	0.94	1	0.9
10 x 25 x 20.5 ¹⁾	10 77 4567 0010	8	10	14	25	20.5	2.5	8	1.05	1	1.7
12 x 29.5 x 24.5	10 07 4305 0012	9	12	16	29.5	24.5	2.5	9	1.15	1.25	2.95
14 x 32.5 x 27.5	10 07 4305 0014	10	14	20	32.5	27.5	3	10	1.25	1.25	4.1
16 x 38.5 x 32.5	10 07 4305 0016	12	16	20	38.5	32.5	3	12	1.35	1.5	6.2
20 x 46 x 40.5	10 07 4305 0020	19	20	28	46	40.5	4	19	1.8	1.5	12.1
25 x 57 x 50.5	10 07 4305 0025	19	25	34	57	50.5	5	19	1.8	1.5	23.1

* bolts lathe work

¹⁾ bolts stamped

²⁾ see mbo catalog page 13_03

06_01
01/2007

Material:

stainless steel 1.4305 (X8CrNiS18-9)

¹⁾ stainless steel 1.4567 (X3CrNiCu18-9-4)

Retaining:

with locking washers DIN 6799 stainless steel
(mbo catalog page 13_03);
also see clevis joint combinations
(mbo catalog section 11)

Special version:

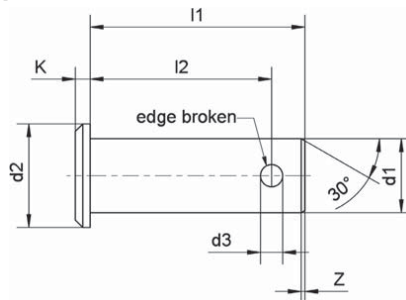
as to length, tolerance and material upon request

Bolts with head (clevis pins)

suitable for clevis



head version at
manufacturer's choice



mbo standard
BKL/BGL/BNL 1.4305



Example for ordering: Bolt version BKL of diameter $d_1 = 10$ mm, stainless steel version, length $l_1 = 29$ mm and length $l_2 = 24.5$ mm; Bolt BKL 10 x 29 x 24.5
Order number: 34 00 4567 0010

mbo identifier	Order number	Nom. size $\varnothing d_1$ h11	Head diameter d_2	d_3 H14	Length		K	z	Mass (kg) per 100 pcs
					l_1 js 15	l_2 + 0.5			
BGL 4 x 12 x 10 ¹⁾	34 00 4305 0004	4	6	1	12	10	1	0.5	0.13
BGL 5 x 15 x 12.3 ¹⁾	34 00 4305 0005	5	8	1.2	15	12.3	1.5	0.5	0.26
BKL 6 x 18 x 15.3 ²⁾	34 00 4567 0006	6	9	1.6	18	15.3	2	0.75	0.46
BKL 8 x 23 x 19.5 ²⁾	34 00 4567 0008	8	12	2	23	19.5	2.5	1	1
BKL 10 x 29 x 24.5 ²⁾	34 00 4567 0010	10	14	3.2	29	24.5	2.5	1	1.9
BNL 12 x 35 x 29.5 ³⁾	54 00 4305 0012	12	16	4	35	29.5	2.5	1.25	3.4
BNL 14 x 40 x 32.5 ³⁾	54 00 4305 0014	14	20	4	40	32.5	3	1.25	4.1
BNL 16 x 45 x 38.2 ³⁾	54 00 4305 0016	16	20	4	45	38.2	3	1.5	7.2
BNL 20 x 53 x 47 ³⁾	54 00 4305 0020	20	28	5	53	47	4	1.5	13.9
BNL 25 x 67 x 59 ³⁾	54 00 4305 0025	25	34	6.3	67	59	5	1.5	26.6

¹⁾ lathe work

²⁾ bolts stamped

³⁾ riveted version

06_02
01/2007

Material:

stainless steel 1.4305 (X8CrNiS18-9)

²⁾ stainless steel 1.4567 (X3CrNiCu18-9-4)

Special version:

as to length, tolerance and material upon request

Retaining:

with washer and cotter pin stainless steel;
also see clevis joint combinations
(mbo catalog section 11)