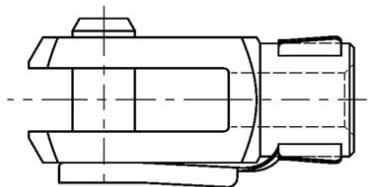


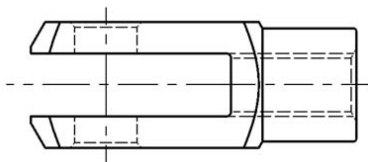
Clevis joint combinations

mbo standard AFKB

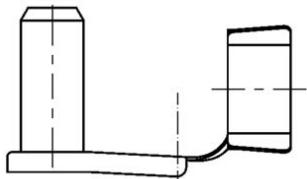


consisting of:

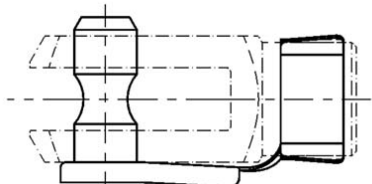
Clevis (G)
mbo standard 02
(see mbo catalog page
03_01 and 03_02)



Folding spring bolt (FKB)
mbo standard 01
(see mbo catalog page 02_01)



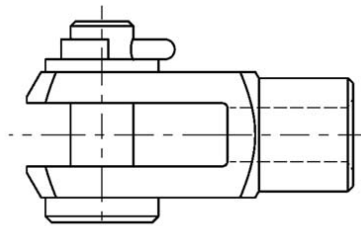
Folding spring bolt with groove (FKBR)
mbo standard 01
(see mbo catalog page 02_02)



**You will find all parts depicted on this page in different sizes in this catalog
Additional variations are possible**

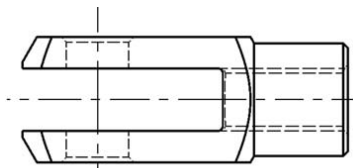
mbo standard A

mbo standard 10

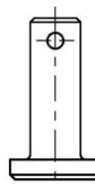


consisting of:

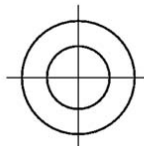
Clevis (G)
mbo standard 02
(see mbo catalog page
03_01, 03_02 and 05_01)



Bolt with pin hole
mbo standard BNL/BGL/BKL
(see mbo catalog page
04_03, 04_04 and 06_02)



Washer
Cotter pin



11_01
01/2007

Clevis joint combinations

mbo standard ASL - AKL

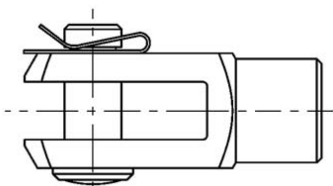
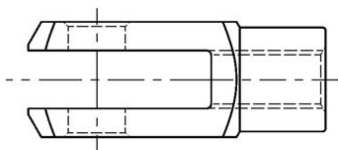


Illustration: ASL clevis joint combination
consisting of:

Clevis (G)
mbo standard 02
(see mbo catalog page
03_01 and 03_02)

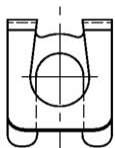


ASL

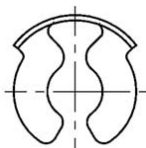
SL-retainer
mbo standard 08
(see mbo catalog
page 13_01)

AKL

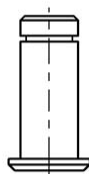
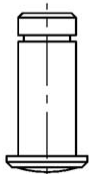
KL-retainer
mbo standard 09
(see mbo catalog
page 13_02)



Bolt with riveted head
and turned groove (BEN)
mbo standard 07
(see mbo catalog
page 04_02)



Stamped bolt with
turned groove (BEK)
mbo standard 77
(see mbo catalog
page 04_01)



mbo standard AB - ABS

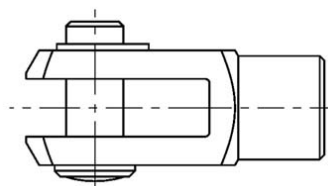
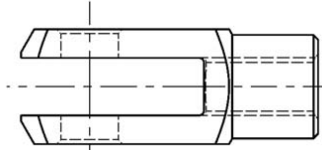


Illustration: ABS clevis joint combination
consisting of:

Clevis (G)
mbo standard 02
(see mbo catalog page
03_01, 03_02 and 05_01)

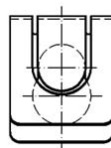


AB

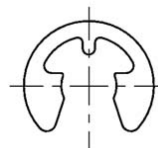
Bayonet clip
mbo standard 06
(see mbo catalog
page 13_04)

ABS

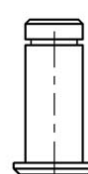
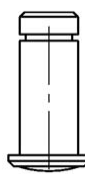
Locking washer
DIN 6799
(see mbo catalog
page 13_03)



Bolt with rivated head
and turned groove (BEN)
mbo standard 07
(see mbo catalog
page 04_02)

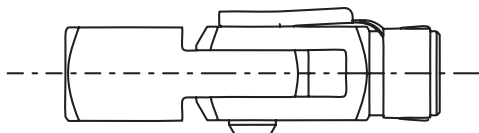


Stamped bolt with
turned groove (BEK)
mbo standard 07
(see mbo catalog
page 04_02 and 06_01)



Clevis joint combinations

Knee joint with female thread



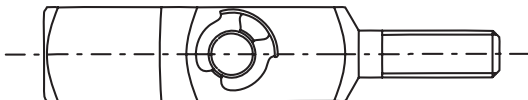
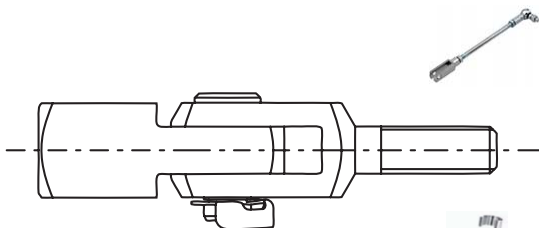
swivelling
consisting of:

AFKB clevis joint combination
with female thread
mbo standard AFKB
(see mbo catalog page 11_01)

and

Mating piece for clevis
with female thread
mbo standard 23
(see mbo catalog section 10)

Knee joint with female and male thread



swivelling
consisting of:

AKL clevis joint combination
with male thread
similar mbo standard AKL
(see mbo catalog page 11_02 and
mbo catalog section 7)

and

Mating piece for clevis
with female thread
mbo standard 23
(see mbo catalog section 10)

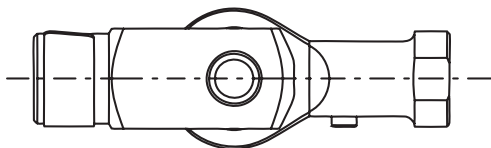
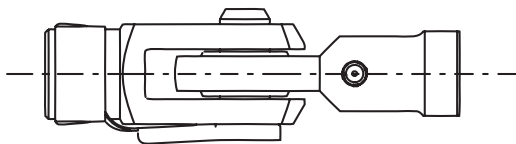
**You will find all parts depicted on this page in different sizes in this catalog
Additional variations are possible**

11_03
01/2007

Clevis joint combinations

further variations

Knee joint with female thread



swivelling

consisting of:

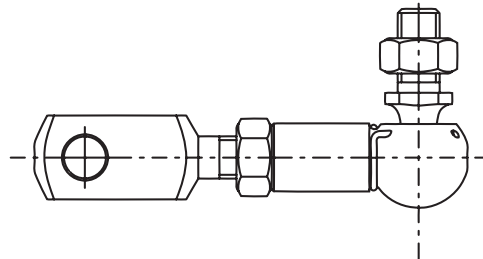
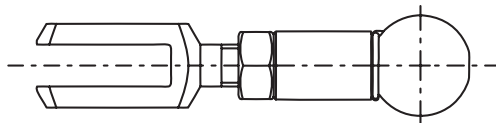
AFKB clevis joint combination with female thread
mbo standard AFKB
(see mbo catalog page 11_01)

and

Rod end E series with female thread
mbo standard 82
(see mbo catalog page 17_31)



Joint combination



swivelling

consisting of:

Clevis with male thread
mbo standard 42
(see mbo catalog section 7)

and

Angle joint DIN 71 802
mbo standard 03
(see mbo catalog section 16)

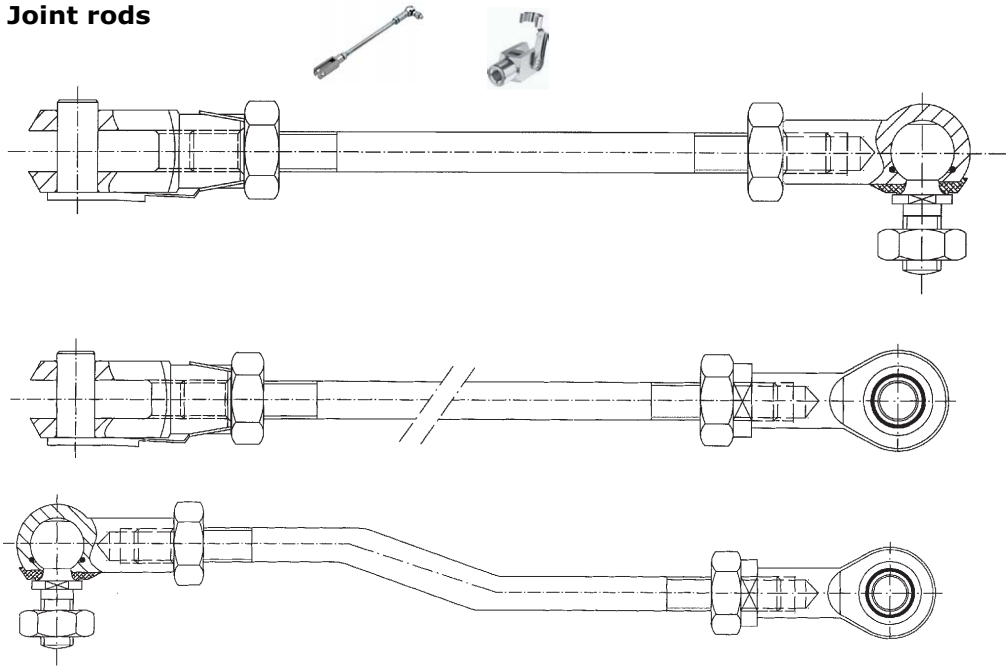
and

Locknut as per DIN 934

11_04
01/2007

**You will find all parts depicted on this page in different sizes in this catalog
Additional variations are possible**

Joint rods



Joint rods available for delivery: M4 - M24

- regular thread and fine-pitch thread
- regular thread / regular thread
- regular thread / regular thread, left-handed
- bent and straight

- Possible combinations of accessory parts:**
- Clevises (see mbo catalog section 3 and 5)
 - Clevis joints (see mbo catalog page 11_01 up to 11_04)
 - Angle joints (see mbo catalog section 16)
 - Rod ends (see mbo catalog section 17)
 - Mating pieces for clevises (see mbo catalog section 10)
 - Knuckle eyes (see mbo catalog section 18)

Locknuts as per DIN 934

Special versions upon request



Additional variations are possible

11_05
01/2007