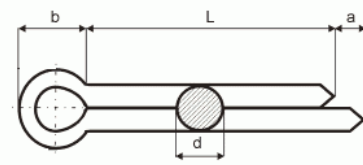


Splint pins, steel
(Cotter pins)



ISO 1234 / DIN 94

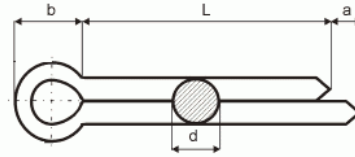
Zinc plated

hole size	1		1,2		1,6		2	
d max.	0,9		1		1,4		1,8	
d min.	0,8		0,9		1,3		1,7	
a max.	1,6		2,5		2,5		2,5	
b ≈	3		3		3,2		4	
L quantity	100	1000	100	1000	100	1000	100	1000
6	4.-	1.60			4.30	1.95		
8	4.-	1.60	4.-	1.65	4.30	1.95		
10	4.-	1.60	4.-	1.65	4.30	1.95	4.60	2.25
12	4.-	1.60	4.-	1.65	4.30	1.95	4.60	2.25
14	4.-	1.60	4.-	1.65	4.30	1.95	4.60	2.25
16	4.-	1.60	4.-	1.65	4.30	1.95	4.60	2.25
18	4.-	1.60	4.-	1.65			4.60	2.25
20	4.10	1.65	4.10	1.85	4.40	2.10	4.70	2.30
22					4.50	2.20	4.80	2.40
25	4.50	2.20	4.50	2.20	4.70	2.25	4.90	2.50
28					4.80	2.30	5.-	2.60
32	4.80	2.15			5.20	2.50	5.30	2.65
36					8.80	4.50	5.40	2.90
40					10.70	5.70	5.50	3.05
45							7.80	4.20
50					15.50	10.30	8.30	4.70

revised cc25d

Splint pins, steel
(Cotter pins)

ISO 1234 / DIN 94



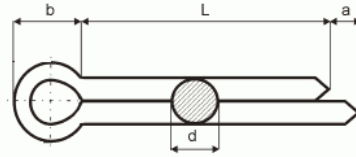
Zinc plated

hole size	2,5		3,2		4		5	
d max.	2,3		2,9		3,7		4,6	
d min.	2,1		2,7		3,5		4,4	
a max.	2,5		3,2		4		4	
b ≈	5		6,4		8		10	
L quantity	100	1000	100	1000	100	1000	100	1000
10	4.90	2.55	5.20	3.-				
12	5.-	2.60	5.20	3.-				
14	5.-	2.60	5.30	3.-	6.20	3.85		
16	5.-	2.60	5.40	3.-	6.40	3.85		
18	5.-	2.60	5.50	3.-	6.40	3.85		
20	5.20	2.75	5.70	3.20	6.50	3.95	8.70	5.10
22	5.30	2.85	5.80	3.40	6.80	4.20	8.60	5.70
25	5.40	3.-	6.-	3.60	6.90	4.40	8.90	6.10
28	5.60	3.15	6.20	3.75	7.20	4.70	9.50	6.70
32	5.70	3.30	6.40	3.95	7.70	5.-	10.10	6.95
36	5.90	3.55	6.70	4.10	8.-	5.10	10.70	7.20
40	6.10	3.75	7.-	4.25	8.30	5.25	11.30	7.50
45	6.40	4.-	7.40	4.50	8.80	5.50	12.10	8.-
50	6.60	4.20	7.70	4.90	9.30	5.80	13.10	8.30
56			8.10	5.30	9.80	6.90	14.20	9.50
63			8.80	6.50	10.30	7.50	15.50	10.10
71					11.-	8.20	17.60	12.25
80					12.50	9.-	18.60	13.40
90							22.-	15.90
100							26.-	17.90

revised cc25d

Splint pins, steel
(Cotter pins)

ISO 1234 / DIN 94



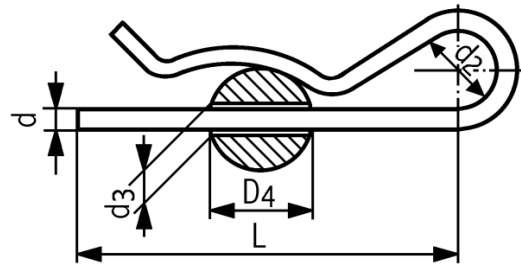
Zinc plated

hole size	6,3		8		10		13	
d max.	5,9		7,5		9,5		12,4	
d min.	5,7		7,3		9,3		12,1	
a max.	4		4		6,3		6,3	
b ≈	12,6		16		20		26	
L quantity	100	1000	100	1000	100	1000	100	
28	13.90	9.20						
32	14.10	9.30						
36	15.10	10.10						
40	16.-	12.20	31.50	25.25				
45	17.40	13.30	33.50	26.75				
50	18.60	14.40	35.50	28.50				
56	20.50	15.70	38.25	30.50	60.50	50.50		
63	23.-	17.80	41.50	33.25	63.-	54.50		
71	24.75	18.10	44.50	35.50	69.-	60.50	120.-	
80	26.75	19.60	46.50	37.-	73.-	63.-		
90	32.-	23.-	49.50	39.75	81.50	69.50	147.-	
100	34.50	26.25	54.-	43.-	88.50	74.-	156.-	
112	36.75	29.50	61.50	49.-	93.50	78.-	182.-	
125	50.50	37.50	69.-	57.-	101.-	85.-	202.-	
140			85.50	72.50	111.-	93.-		

revised cc25d

Locking pins, steel

K 891



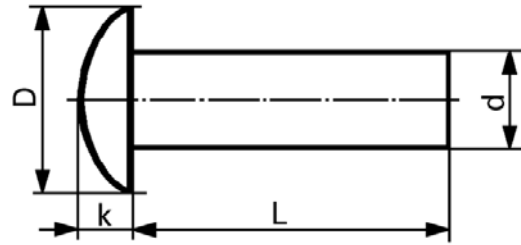
Zinc plated

d	L	d2	D4	d3	zinc plated	
					100	1000
quantity						
2	50	10	9-14	2,5	15.50	12.60
3	60	18	10-16	3,5	16.-	13.10
4	60	20	16-20	4,5	32.-	25.50
5	85	24	20-28	6	55.-	47.40
6	105	30	28-40	7	82.-	71.60
7	105	30	28-45	8	140.-	130.-
8	110	28	30-45	9	180.-	160.-

revised cc25d

Round head rivets, steel

DIN 660



SN 213102

d	±	2	3	4	5	6	8	
D		3,5	5,2	7	8,8	10,5	14	
k		1,2	1,8	2,4	3	3,6	4,8	
L	quantity	1000-	1000-	1000-	100	100	100	
4		3.30	3.30					
6		3.30	3.30	3.45				
8		3.30	3.30	3.45	5.50	8.30		
10		3.30	3.30	3.60	6.20	8.30	12.90	
12			3.30	3.70	7.50	9.10	13.70	
14			3.30	4.30	8.50	9.50	15.-	
16			3.30	4.60	9.-	10.10	16.40	
18			3.30	5.10	9.20	10.80		
20			3.30	5.30	9.80	12.-	16.90	
22				5.60	10.30	12.90		
25				5.70	10.30	13.60	20.-	
30				6.10	11.50	14.90	20.75	
35				6.90	11.60	16.-	24.-	
40				7.80	13.30	19.-	27.25	
45					15.50	21.-	31.-	
50					16.80	23.-	34.75	
60							41.-	

- ø2 - ø4: Order quantity 1000 pieces below 35% surcharge

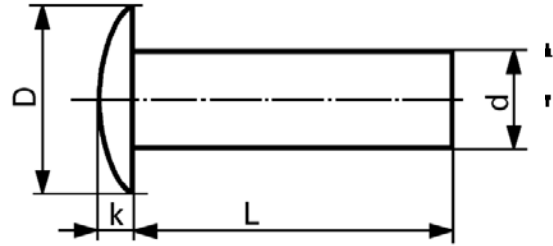
revised cc25d

Maryland Metrics Fastener Catalog - Chapter J Owings Mills, MD 21117 USA

phones: (410)358-3130 (800)638-1830 faxes: (410)358-3142 (800)872-9329 e-mail: techinfo@mdmetric.com
copyright 2003 maryland metrics/kyburz ch

Oval round head rivets, steel

DIN 674



SN 213127

d	± 0,15	3	4	5	6	
D	h15	6,8	9	11,2	13,5	
k	js14	1,5	2	2,5	3	
L	quantity	1000-	1000-	100	100	
4		3.90				
6		3.90	5.20			
8		3.90	5.20	6.50		
10		3.90	5.20	6.60	8.90	
12		4.60	5.50	7.80	9.-	
14		4.60	5.60	8.50	9.40	
16		4.60	5.60	8.60	10.10	
18			6.20	8.80		
20			6.50	9.-	10.50	
25				9.80	11.60	
30				12.90	13.70	

- ø3 - ø4: Order quantity 1000 pieces below 35% surcharge

revised cc25d

Maryland Metrics Fastener Catalog - Chapter J Owings Mills, MD 21117 USA

phones: (410)358-3130 (800)638-1830 faxes: (410)358-3142 (800)872-9329 e-mail: techinfo@mdmetric.com
copyright 2003 maryland metrics/kyburz ch

ALUMINIUM

Round head rivets

DIN 660



SN 213102

d	±	2	3	4	5	6	
D		3,5	5,2	7	8,8	10,5	
k		1,2	1,8	2,4	3	3,6	
L	quantity	1000-	1000-	1000-	1000-	1000-	
4		3.50	3.50				
6		3.50	3.50				
8		3.50	3.50	4.10			
10			3.60	4.40	7.-		
12				5.-	7.20		
14			3.70	5.20	7.40		
16			3.80	5.20	7.80	8.20	
20				5.50	8.-	9.20	
25				6.-	8.10	10.80	
30						13.-	

- Order quantity 1000 pieces below 35% surcharge

revised cc25d

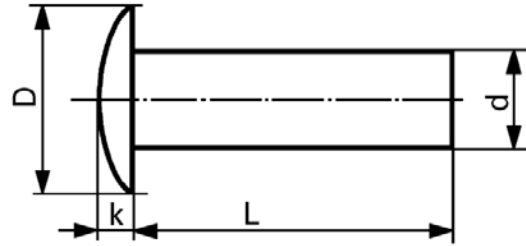
Maryland Metrics Fastener Catalog - Chapter J Owings Mills, MD 21117 USA

phones: (410)358-3130 (800)638-1830 faxes: (410)358-3142 (800)872-9329 e-mail: techinfo@mdmetric.com
copyright 2003 maryland metrics/kyburz ch

ALUMINIUM

Oval round head rivets

DIN 674



SN 213127

d	±	2	3	4	5	6	
D		4,5	6,8	9	11,2	13,5	
k		1	1,5	2	2,5	3	
L	quantity	1000-	1000-	1000-	1000-	1000-	
4		3.-					
5		3.-	3.-				
6		3.-	3.-	4.20			
8		3.-	3.10	4.20			
10			3.25	4.40	5.90		
12			3.25	4.10	5.90		
14			3.55	5.40	6.80	9.30	
16			3.65	5.80	7.20	10.20	
18			3.75	6.60	7.50	10.80	
20			4.10	6.90	7.90	11.50	
25			4.90	7.90	9.80	13.30	
30				9.40	9.80	15.60	
35					10.50	17.60	
40						19.30	

- Order quantity 1000 pieces below 35% surcharge

revised cc25d

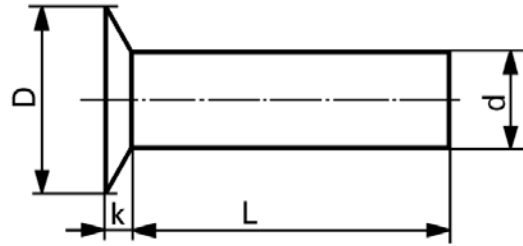
Maryland Metrics Fastener Catalog - Chapter J Owings Mills, MD 21117 USA

phones: (410)358-3130 (800)638-1830 faxes: (410)358-3142 (800)872-9329 e-mail: techinfo@mdmetric.com
copyright 2003 maryland metrics/kyburz ch

ALUMINIUM

Countersunk head rivets 90°

SN 213126



d	±0,15	3	4	5	6	
D	h15	6	8	10	12	
k	≈	1,5	2	2,5	3	
L	quantity	1000-	1000-	1000-	1000-	
6		2.60				
8		3.50	4.20			
10		3.85	4.70	5.-		
14		4.-	5.50	6.60		
16		4.40	5.50	7.20	8.50	
20		5.10	6.60	8.-	9.90	
25			8.10	8.80	10.90	
30			9.-	10.30	11.90	

- Order quantity 1000 pieces below 35% surcharge

revised cc25d