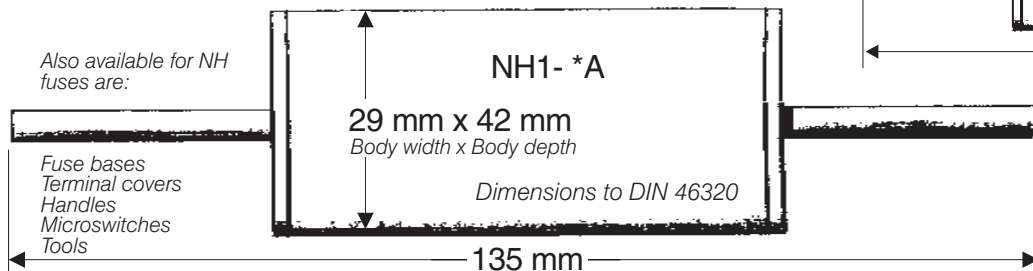




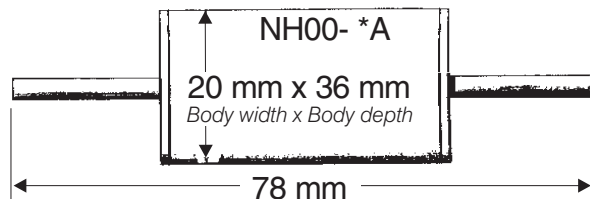
EUROPEAN FUSE CHART**

(Also includes JAPANESE FUSE INFORMATION)

ACTUAL SIZE DRAWINGS

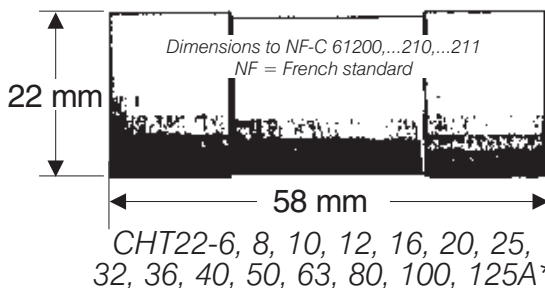
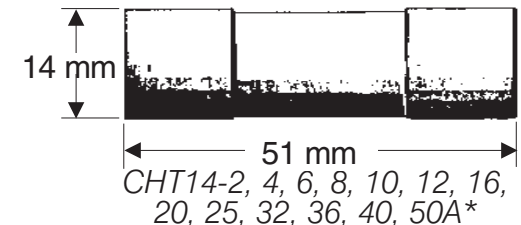
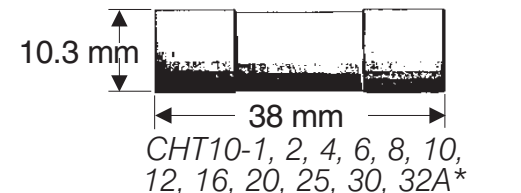
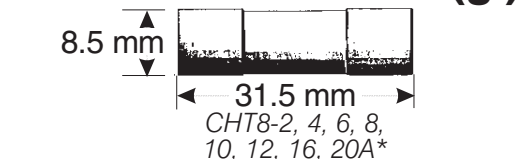


NH TYPE BLADE FUSES (gt, gl, gf)

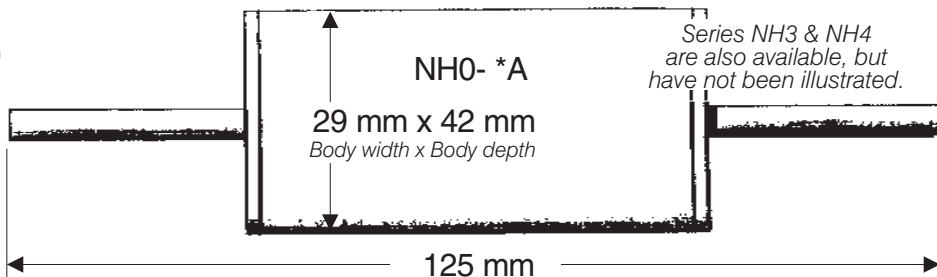


MARKINGS:
FAST BLO - FLINK, (QUICK RESPONSE), gf, F, LIGHTNING BOLT
SLO BLO - TRAGE, (TIME LAG) T, gl, gt, gG, Snail symbol
SUPER FAST BLO - gR, UltraRapid, Reticur, Silized

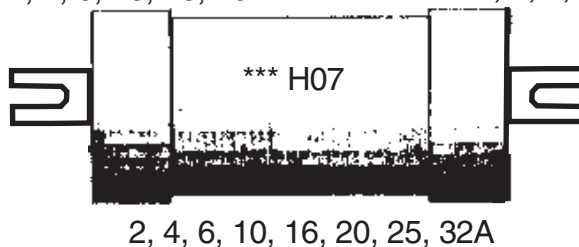
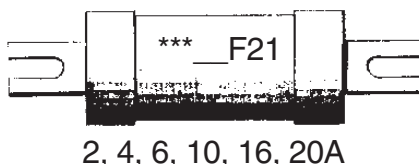
ITALIAN & FRENCH CARTRIDGE FUSES (gl)



*SPECIFY WITH OR WITHOUT INDICATOR PIN. AVAILABLE IN gl (LINE PROTECTION), 'am' (AMP MOTOR) RATED, gR (SEMICONDUCTOR PROTECTION)



BRITISH FUSE LINKS



***ORDERING EXAMPLE: 10F21

Also available are:
BRITISH FUSES TO: BS 88: Part 1 - 2, Class Q1
TYPES: NS, NIT, TIA, TIS, TCP, TFP, TBC, TC, TF, TKF
FUSE HOLDER; FRONT CONNECTION TO: BS 88 500/600V

JAPANESE FUSES

Also available are: FUSE TYPES BLA, (330V) C2, C3, C3.
CELLO-LITE TYPES: NC1, NC2. CELLO-LITE FUSE CASES

**ALSO AVAILABLE, BUT NOT ILLUSTRATED ARE ADDITIONAL EUROPEAN TYPES PLUS JAPANESE FUSE TYPES.

SEMICONDUCTOR FUSES: Diazed, Neozed, Glass cylinder, NH (knife blade, stud mounted, & stud mounted with microswitch), Square body (with threaded holes, & with knife blade). Panel mount, PC board, & base mount fuse holders.

WARNING: We are not responsible for any technical errors or typographical errors in this publication.

Trademarks & tradenames are the property of their respective owners.