



Photo: HELUKABEL®

Termination and connection sleeves



Cable accessories

Termination and connection sleeves

Telecommunications cables

Sleeves for telecommunications cables	
MFF	311
Core connectors	
AV, AVT, AVZ	312
Core connection pliers.....	312

Low voltage

Shrink-on	
Low voltage connection sleeves NSVM-S	
Single-core	313
Multicore	314
E90.....	315

Medium voltage

Shrink-on	
Medium voltage connection sleeves NSVM-S	
Single-core	316
Three-core.....	317
End closures - Indoors IREV-S	
Single-core	318
Three-core.....	318
End closures - Outdoors FLEV-S	
Single-core	319
Three-core.....	319
Push-on	
Medium voltage connection sleeves MSVM-A	
Single-core	320
End closures - Indoors IREV-A	
Single-core	321
End closures - Outdoors FLEV-A	
Single-core	321
Medium-range voltage accessories	
KMRS Repair Set.....	322
LG 250/500 Sealant.....	322
Sealing tape.....	322
High-voltage insulating tape HSIB.....	323
Channel warning tape.....	323

Accessories

Cable protection HDKS.....	324
Degreasing spray.....	325



Cable accessories

MfF

VASMI - straight-through joint for telephone cable



MfF

Connection and branch sleeve for telecommunication cables. For connecting telecommunication cables and producing cable branches for telecommunication cables.

Application

- Outdoors
- Indoors
- Underground
- Water

Properties

- High electrical insulation values
- Water-tight and moisture-protected
- Good mechanical strength
- Highly resistant to UV rays, earth alkalis and chemical influences
- With temperature indicator colour
- Suitable for cut and uncut cables
- Dismountable
- Unrestricted storage

Scope of delivery

- shielding connection conductor with special clamp
- desiccant
- protection inlay
- flame protection film
- shrink-on sleeve
- insulating band
- cleaning agent
- sanding
- assembly instruction

Part No.	Type	Length mm	Cable Ø from - to mm	Converter-fed			net EUR/items at acceptance of		
				with core connectors 0,4 mm no. of twin-cores	with core connectors 0,6 mm no. of twin-cores	with core connectors 0,8 mm no. of twin-cores	1	2 - 5	6 - 10
94330	VASMI 1 SRT	330,0	8,0 - 35,0	30	20	10	o. r.	o. r.	o. r.
94331	VASMI 1/L SRT	570,0	8,0 - 35,0	70	40	20	o. r.	o. r.	o. r.
94332	VASMI 2 SRT	380,0	15,0 - 55,0	100	50	30	o. r.	o. r.	o. r.
94333	VASMI 2/L SRT	690,0	15,0 - 55,0	150	100	50	o. r.	o. r.	o. r.
94334	VASMI 3 SRT	400,0	25,0 - 68,0	150	100	70	o. r.	o. r.	o. r.
94335	VASMI 3/L SRT	690,0	25,0 - 68,0	200	200	100	o. r.	o. r.	o. r.
94336	VASMI 4 SRT	430,0	28,0 - 94,0	200	200	150	o. r.	o. r.	o. r.
94337	VASMI 5 SRT	600,0	28,0 - 94,0	400	300	200	o. r.	o. r.	o. r.
94338	VASMI 6 SRT	725,0	34,0 - 101,0	600	500	300	o. r.	o. r.	o. r.

o. r. = on request



Cable accessories

AV

core connectors for communication and signal cables



AV/AVT/AVZ

Core connectors type **AV** and **AVT** connect plastic-insulated telecommunication and signal cable cores. They are characterised by their space-saving and assembly-friendly structure.

Satisfy the requirements of DIN 47627 (solder-free core connections in sleeves for telecom cables).

When clamping with the **AVZ** tool, the vertical forces are transferred evenly to the core connectors, thus guaranteeing reliable contacting of the copper lines to be processed.

Properties

- High electrical insulation values
- High mechanical and thermal strength
- Impact-proof plastic housing
- Corrosion protection through grease charge
- Improved contacting through U-contact principle
- Core diameters up to 2.0 mm possible
- Larger application range from 0.4 - 0.9 mm conductor diameter
- Stripping, connection and insulation in one action

Scope of delivery

Colour: transparent

Notes

The parallel-clamping core binding pliers or equivalent are suitable for flush clamping core connectors. Use tool.

core connector

Part No.	Type	Number of cores	Conductor Ø from - to mm	Units	net EUR/100 items at acceptance of		
					bis 500	501 - 1000	1001 - 5000
93147	AV2	2	0,4 - 0,9	100	o. r.	o. r.	o. r.
95148	AV5	5	0,4 - 0,9	100	o. r.	o. r.	o. r.
93149	AVT3	3	0,4 - 0,9	100	o. r.	o. r.	o. r.

core connector tool

Part No.	Type	Number of cores	Conductor Ø from - to mm	Units	net EUR/items at acceptance of		
					1	2 - 5	6 - 10
93150	AVZ	-	-	1	o. r.	o. r.	o. r.

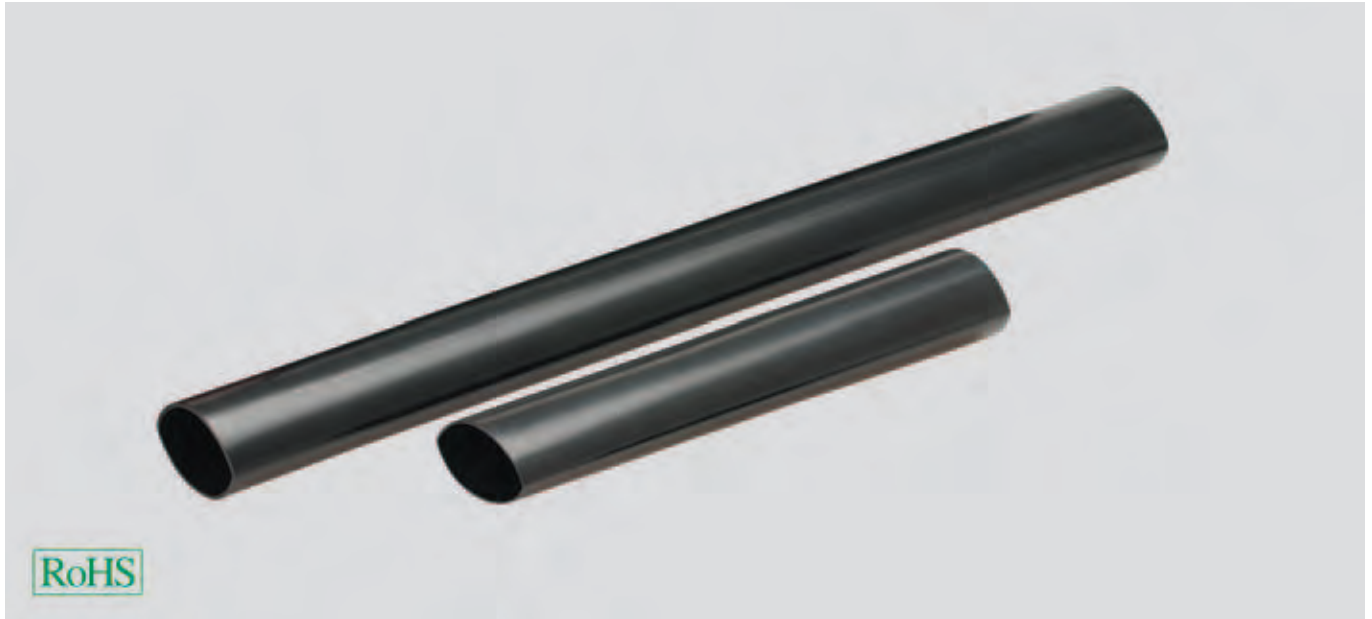
o. r. = on request



Cable accessories

NSVM-S

low voltage straight-through joint heat-shrinking type - single core



NSVM-S (single-core coupling sleeve)

Coupling sleeve for single-core plastic-insulated power cables to 0.6/1(1.2)kV, universal applications for connecting cables and lines made of PVC, PE and VPE, e.g. N(A)YY, N(A)2XY, N(A)YCWY, NYM, NYY.

Application

- Interior
- Outdoors
- Underground
- Water

Properties

- Halogen-free
- High electrical insulation values
- Laterally water-tight
- Good mechanical strength
- Compact dimensions
- Unrestricted storage
- Large line and cable cross-sections
- Highly resistant to chemical influences, alkaline earths and UV rays

Scope of delivery

- inner seal
- outer seal
- illustrated assembly instruction

Test

According to CENELEC HD 623 (VDE0278, Part 623)

Part No.	Type	Nominal voltage U ₀ /U _m	Cross section mm ²	Units	net EUR/items at acceptance of		
					1	2 - 5	6 - 10
93890	NSVM-S1	0,6/1kV	1x 10,0 - 1x 25,0	1	o. r.	o. r.	o. r.
93891	NSVM-S1	0,6/1kV	1x 35,0 - 1x 75,0	1	o. r.	o. r.	o. r.
93892	NSVM-S1	0,6/1kV	1x 95,0 - 1x 240,0	1	o. r.	o. r.	o. r.
93893	NSVM-S1	0,6/1kV	1x 150,0 - 1x 300,0	1	o. r.	o. r.	o. r.
93894	NSVM-S1	0,6/1kV	1x 300,0 - 1x 500,0	1	o. r.	o. r.	o. r.

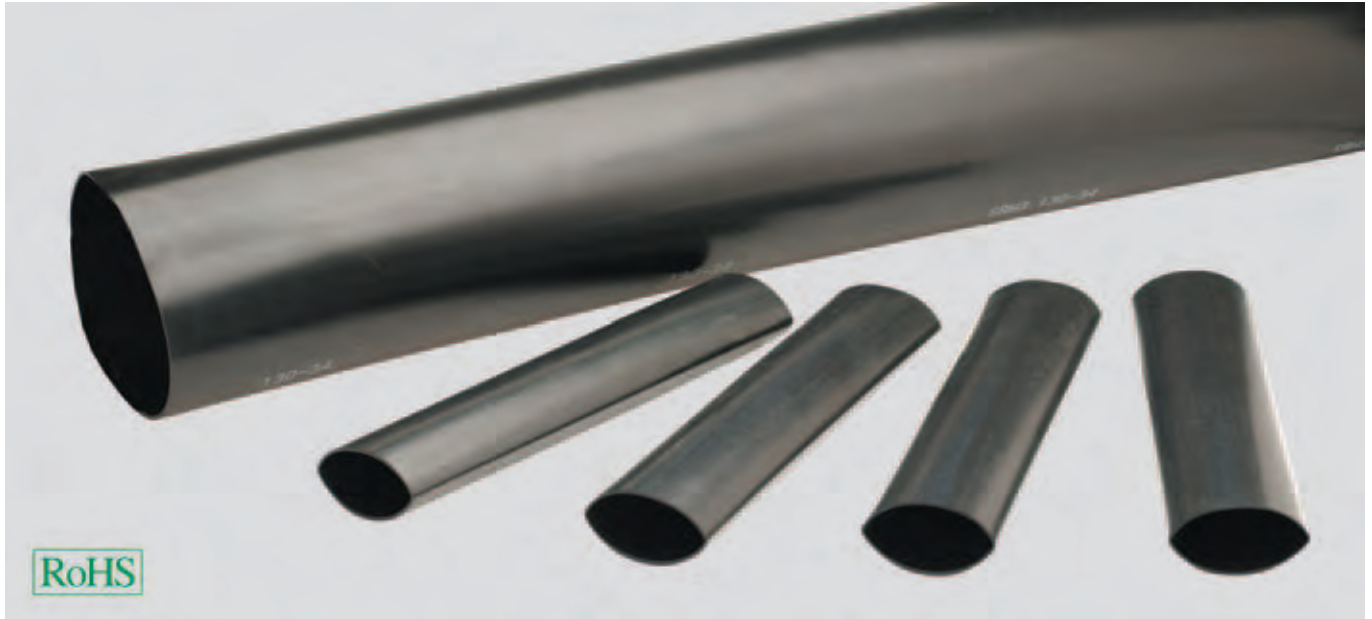
o. r. = on request



Cable accessories

NSVM-S

low voltage straight-through joint heat-shrinking type - multiple core



NSVM-S (multi-core coupling sleeve)

Coupling sleeve for multi-core plastic-insulated power cables to 0.6/1(1.2)kV, universal applications for connecting cables and lines from PVC, PE and VPE, e.g. N(A)YY, N(A)2XY, N(A)YCWY, NYM, NYY.

Application

- Indoors
- Outdoors
- Underground
- Water

Properties

- Halogen-free
- High electrical insulation values
- Laterally water-tight
- Good mechanical strength
- Compact dimensions
- Unrestricted storage
- Large line and cable cross-sections
- Highly resistant to chemical influences, earth alkalis and UV rays

Scope of delivery

- inner seal
- outer seal
- illustrated assembly instruction

Test

According to CENELEC HD 623 (VDE0278,Part623)

Part No.	Type	Nominal voltage U ₀ /U(U _m)	Cross section mm ²	Units	net EUR/items at acceptance of		
					1	2 - 5	6 - 10
94400	NSVM-S3	0,6/1kV	3x 1,5 - 3x 16,0	1	o. r.	o. r.	o. r.
94401	NSVM-S3	0,6/1kV	3x 6,00 - 3x 25,0	1	o. r.	o. r.	o. r.
94402	NSVM-S3	0,6/1kV	3x 25,0 - 3x 70,0	1	o. r.	o. r.	o. r.
94403	NSVM-S3	0,6/1kV	3x 95,0 - 3x 150,0	1	o. r.	o. r.	o. r.
94404	NSVM-S3	0,6/1kV	3x 185,0 - 3x 300,0	1	o. r.	o. r.	o. r.
93382	NSVM-S4	0,6/1kV	4x 1,5 - 4x 6,0	1	o. r.	o. r.	o. r.
93388	NSVM-S4	0,6/1kV	4x 1,5 - 4x 16,0	1	o. r.	o. r.	o. r.
93383	NSVM-S4	0,6/1kV	4x 6,0 - 4x 25,0	1	o. r.	o. r.	o. r.
93384	NSVM-S4	0,6/1kV	4x 16,0 - 4x 50,0	1	o. r.	o. r.	o. r.
93385	NSVM-S4	0,6/1kV	4x 25,0 - 4x 95,0	1	o. r.	o. r.	o. r.
93386	NSVM-S4	0,6/1kV	4x 25,0 - 4x 150,0	1	o. r.	o. r.	o. r.
93389	NSVM-S4	0,6/1kV	4x 95,0 - 4x 300,0	1	o. r.	o. r.	o. r.
94405	NSVM-S5	0,6/1kV	5x 1,5 - 5x 6,0	1	o. r.	o. r.	o. r.
94406	NSVM-S5	0,6/1kV	5x 1,5 - 5x 10,0	1	o. r.	o. r.	o. r.
94407	NSVM-S5	0,6/1kV	5x 1,5 - 5x 16,0	1	o. r.	o. r.	o. r.
94408	NSVM-S5	0,6/1kV	5x 16,0 - 5x 25,0	1	o. r.	o. r.	o. r.

o. r. = on request



Cable accessories

NSVM-S

low voltage straight-through joint heat-shrinking type - E90



NSVM-S E90

Flame-resistant heat-shrinkable low-voltage connecting sleeve. For connecting type (N)HX(HX) and (N)HXCHX safety cables wherever specified.

Application

Power stations, tunnels, airports, elevators, stairways etc.

Properties

- Flame-resistant
- Halogen-free
- Very low smoke generation
- Self-extinguishing
- Suitable for all installation types

Scope of delivery

- inner seal
- insulation tube
- outer seal
- illustrated assembly instruction

Test

DIN4102, part 12,
 status february 1996 (E90)
 DIN VDE 0472, part 814 (FE 180)
 IEC 332

for cable type (N) HX HX

Part No.	Type	Nominal voltage U ₀ /U(Um)	Cross section mm ²	Units	net EUR/items at acceptance of		
					1	2 - 5	6 - 10
94460	NSVM-SE4	0,6/1kV	4x 1,5 - 4x 4,0	1	o. r.	o. r.	o. r.
94461	NSVM-SE4	0,6/1kV	4x 6,0 - 4x 10,0	1	o. r.	o. r.	o. r.
94462	NSVM-SE4	0,6/1kV	4x 16,0 - 4x 25,0	1	o. r.	o. r.	o. r.
94463	NSVM-SE4	0,6/1kV	4x 35,0 - 4x 50,0	1	o. r.	o. r.	o. r.
94464	NSVM-SE4	0,6/1kV	4x 70,0 - 4x 95,0	1	o. r.	o. r.	o. r.
94465	NSVM-SE4	0,6/1kV	4x 120,0 - 4x 150,0	1	o. r.	o. r.	o. r.
94466	NSVM-SE4	0,6/1kV	4x 185,0 - 4x 240,0	1	o. r.	o. r.	o. r.
94467	NSVM-SE5	0,6/1kV	5x 1,5 - 5x 4,0	1	o. r.	o. r.	o. r.
94468	NSVM-SE5	0,6/1kV	5x 6,0 - 5x 10,0	1	o. r.	o. r.	o. r.
94469	NSVM-SE5	0,6/1kV	5x 16,0 - 5x 25,0	1	o. r.	o. r.	o. r.

for cable type (N) HX C HX

Part No.	Type	Nominal voltage U ₀ /U(Um)	Cross section mm ²	Units	net EUR/items at acceptance of		
					1	2 - 5	6 - 10
94470	NSVM-SE4/1	0,6/1kV	4x 1,5 / 1,5 - 4x 4,0 / 4,0	1	o. r.	o. r.	o. r.
94471	NSVM-SE4/1	0,6/1kV	4x 6,0 / 6,0 - 4x 10,0 / 10,0	1	o. r.	o. r.	o. r.
94472	NSVM-SE4/1	0,6/1kV	4x 16,0 / 16 - 4x 25,0 / 16	1	o. r.	o. r.	o. r.
94473	NSVM-SE4/1	0,6/1kV	4x 35,0 / 16,0 - 4x 50,0 / 25	1	o. r.	o. r.	o. r.
94474	NSVM-SE4/1	0,6/1kV	4x 70,0 / 35,0 - 4x 95,0 / 50	1	o. r.	o. r.	o. r.
94475	NSVM-SE4/1	0,6/1kV	4x 120,0 / 70,0 - 4x 150,0 / 70	1	o. r.	o. r.	o. r.
94476	NSVM-SE4/1	0,6/1kV	4x 185,0 / 95,0 - 4x 240,0 / 120	1	o. r.	o. r.	o. r.

o. r. = on request



Cable accessories

MSVM-S

medium voltage straight-through joint heat-shrinking type - single core



MSVM-S

The centre tension transition sleeve suitable for connecting all single-core plastic power cables with external conductor layer to up to 18/30(36)kV.

For connecting cables with differing cross-sections, conductor materials and cable designs with regard to external conductor layer and sheathing.

Properties

- Safe field effect
- Simple assembly
- Large cross-sections
- Unlimited conductivity
- Immediately operational

Scope of delivery

- Unit: 1
- Field effect filler tape (blue)
- thick-walled heat shrink-on tube
- copper fabric shielding
- heat shrink-on tube as an outside protection
- assembly instruction

Part No.	Type	Nominal voltage U ₀ /U(U _m)	Cross section mm ²	Diameter from - to mm	Units	net EUR/items at acceptance of		
						1	2 - 5	6 - 10
93107	MSVM-S12/1	6/10kV	35,0 - 95,0	13,2 - 20,0	1	o. r.	o. r.	o. r.
93108	MSVM-S12/1	6/10kV	95,0 - 240,0	18,2 - 25,0	1	o. r.	o. r.	o. r.
93109	MSVM-S12/1	6/10kV	150,0 - 300,0	20,9 - 35,0	1	o. r.	o. r.	o. r.
93110	MSVM-S12/1	6/10kV	300,0 - 400,00	28,6 - 45,0	1	o. r.	o. r.	o. r.
93111	MSVM-S12/1	6/10kV	500,0 - 800,0	28,6 - 60,0	1	o. r.	o. r.	o. r.
93117	MSVM-S24/1	12/20kV	10,0 - 35,0	13,2 - 15,0	1	o. r.	o. r.	o. r.
93118	MSVM-S24/1	12/20kV	50,0 - 150,0	18,2 - 25,0	1	o. r.	o. r.	o. r.
93119	MSVM-S24/1	12/20kV	70,0 - 240,0	20,9 - 30,0	1	o. r.	o. r.	o. r.
93120	MSVM-S24/1	12/20kV	150,0 - 300,0	24,2 - 35,0	1	o. r.	o. r.	o. r.
93379	MSVM-S24/1	12/20kV	400,0 - 630,0	28,6 - 45,0	1	o. r.	o. r.	o. r.
93398	MSVM-S24/1	12/20kV	630,0 - 1000,0	28,6 - 45,0	1	o. r.	o. r.	o. r.
93121	MSVM-S36/1	18/30kV	35,0 - 50,0	20,9 - 18,0	1	o. r.	o. r.	o. r.
93122	MSVM-S36/1	18/30kV	70,0 - 150,0	24,2 - 25,0	1	o. r.	o. r.	o. r.
93123	MSVM-S36/1	18/30kV	150,0 - 300,0	28,6 - 35,0	1	o. r.	o. r.	o. r.
93124	MSVM-S36/1	18/30kV	300,0 - 500,0	28,6 - 45,0	1	o. r.	o. r.	o. r.

o. r. = on request



Cable accessories

MSVM-S

medium voltage straight-through joint heat-shrinking type - triple core



MSVM-S

The centre tension transition sleeve is suitable for connecting all 3-core plastic power cables with external conductor layer to up to 18/30(36)kV.

For connecting cables with differing cross-sections, conductor materials and cable designs with regard to external conductor layer and sheathing.

Special solutions enable a 3-core plastic power cable to be connected to 3 single-core plastic power cables.

Properties

- Safe field effect
- Simple assembly
- Large cross-sections
- Unlimited conductivity
- Immediately operational

Scope of delivery

- Unit: 1
- Field effect filler tape (blue)
- thick-walled heat shrink-on tube
- cooper fabric shielding
- heat shrink-on tube as an outside protection
- assembly instruction

Part No.	Type	Nominal voltage U _o /U(U _m)	Cross section mm ²	Diameter from - to mm	Units	net EUR/items at acceptance of		
						1	2 - 5	6 - 10
93135	MSVM-S12/3	6/10kV	3x 10,0 - 3x 25,0	13,2 - 20,0	1	o. r.	o. r.	o. r.
93136	MSVM-S12/3	6/10kV	3x 35,0 - 3x 95,0	18,2 - 25,0	1	o. r.	o. r.	o. r.
93137	MSVM-S12/3	6/10kV	3x 95,0 - 3x 240,0	20,9 - 35,0	1	o. r.	o. r.	o. r.
93142	MSVM-S24/3	12/20kV	3x 10,0 - 3x 35,0	13,2 - 15,0	1	o. r.	o. r.	o. r.
93143	MSVM-S24/3	12/20kV	3x 50,0 - 3x 150,0	18,2 - 25,0	1	o. r.	o. r.	o. r.
93144	MSVM-S24/3	12/20kV	3x 70,0 - 3x 240,0	20,9 - 30,0	1	o. r.	o. r.	o. r.
93145	MSVM-S24/3	12/20kV	3x 150,0 - 3x 300,0	24,2 - 35,0	1	o. r.	o. r.	o. r.
93186	MSVM-S36/3	18/30kV	3x 35,0 - 3x 70,0	20,9 - 18,0	1	o. r.	o. r.	o. r.
93187	MSVM-S36/3	18/30kV	3x 70,0 - 3x 150,0	24,2 - 25,0	1	o. r.	o. r.	o. r.
93188	MSVM-S36/3	18/30kV	3x 150,0 - 3x 300,0	28,6 - 35,0	1	o. r.	o. r.	o. r.

Part No.	Type	Nominal voltage U _o /U(U _m)	Cross section mm ²	Diameter from - to mm	Units	net EUR/items at acceptance of		
						1	2 - 5	6 - 10
93138	MSVM-S12/3 S	6/10kV	3x 35,0 - 3x 70,0	13,2 - 20,0	1	o. r.	o. r.	o. r.
93139	MSVM-S12/3 S	6/10kV	3x 95,0 - 3x 150,0	18,2 - 25,0	1	o. r.	o. r.	o. r.
93140	MSVM-S12/3 S	6/10kV	3x 185,0 - 3x 300,0	20,9 - 35,0	1	o. r.	o. r.	o. r.

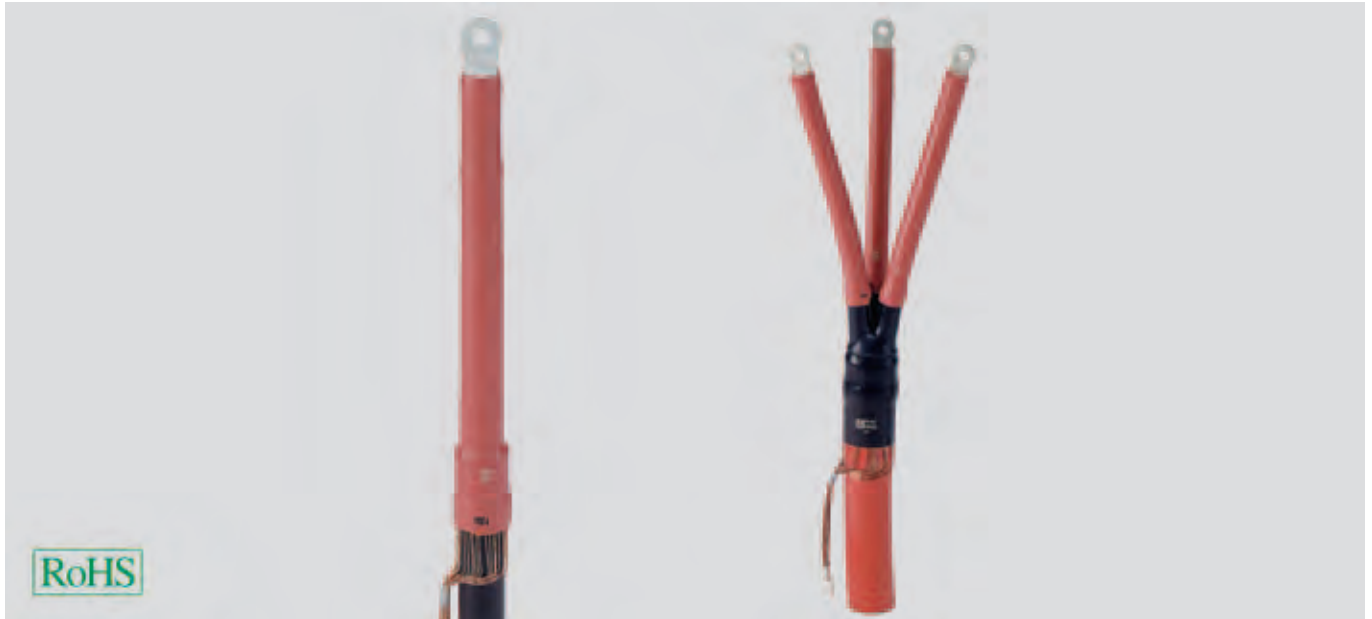
o. r. = on request



Cable accessories

IREV-S

indoor termination, shrinking type



IREV-S

The interior end seals are suitable for all single-conductor and three-conductor medium-range voltage plastic cables with differing conductor layers and sheath designs up to 18/30(36)kV.

Properties

- Safe field effect
- Simple assembly
- Wider application range
- Excellent external layer behaviour
- Unlimited conductivity
- Immediately operational

Scope of delivery

- Unit: 1
- aufschiebbares Silikon-Feldsteuerelement
- sealing band
- creeping current resistant, weather-proof heat shrink-on tube
- assembly instruction
- aufschiebbare Silikonschirme

Notes

- An additional earthing kit is required for cables with copper sheath.
- Without terminals.
- 1 unit = 1 set with 3 items.

single core

Part No.	Type	Nominal voltage U ₀ /U(Um)	Cross section mm ²	Units	net EUR/items at acceptance of		
					1	2 - 5	6 - 10
93190	IREV-S12/1	6/10kV	10,0 - 25,0	1	o. r.	o. r.	o. r.
93191	IREV-S12/1	6/10kV	25,0 - 95,0	1	o. r.	o. r.	o. r.
94420	IREV-S12/1	6/10kV	95,0 - 240,0	1	o. r.	o. r.	o. r.
93192	IREV-S12/1	6/10kV	150,0 - 400,0	1	o. r.	o. r.	o. r.
93193	IREV-S12/1	6/10kV	240,0 - 500,0	1	o. r.	o. r.	o. r.
94421	IREV-S12/1	6/10kV	400,0 - 800,0	1	o. r.	o. r.	o. r.
94422	IREV-S12/1	6/10kV	800,0 - 1000,0	1	o. r.	o. r.	o. r.
94423	IREV-S24/1	12/20kV	10,0 - 35,0	1	o. r.	o. r.	o. r.
93194	IREV-S24/1	12/20kV	25,0 - 95,0	1	o. r.	o. r.	o. r.
93195	IREV-S24/1	12/20kV	95,0 - 185,0	1	o. r.	o. r.	o. r.
93196	IREV-S24/1	12/20kV	120,0 - 300,0	1	o. r.	o. r.	o. r.
93197	IREV-S24/1	12/20kV	240,0 - 500,0	1	o. r.	o. r.	o. r.
94424	IREV-S24/1	12/20kV	630,0 - 1000,0	1	o. r.	o. r.	o. r.
93198	IREV-S36/1	18/30kV	35,0 - 70,0	1	o. r.	o. r.	o. r.
94425	IREV-S36/1	18/30kV	50,0 - 150,0	1	o. r.	o. r.	o. r.
93199	IREV-S36/1	18/30kV	150,0 - 400,0	1	o. r.	o. r.	o. r.
93200	IREV-S36/1	18/30kV	500,0 - 800,0	1	o. r.	o. r.	o. r.

3-core

Part No.	Type	Nominal voltage U ₀ /U(Um)	Cross section mm ²	Units	net EUR/items at acceptance of		
					1	2 - 5	6 - 10
94435	IREV-S12/3	6/10kV	10,0 - 25,0	1	o. r.	o. r.	o. r.
93201	IREV-S12/3	6/10kV	25,0 - 95,0	1	o. r.	o. r.	o. r.
93202	IREV-S12/3	6/10kV	95,0 - 240,0	1	o. r.	o. r.	o. r.
93203	IREV-S12/3	6/10kV	150,0 - 400,0	1	o. r.	o. r.	o. r.
94436	IREV-S24/3	12/20kV	10,0 - 35,0	1	o. r.	o. r.	o. r.
94437	IREV-S24/3	12/20kV	25,0 - 95,0	1	o. r.	o. r.	o. r.
94438	IREV-S24/3	12/20kV	70,0 - 240,0	1	o. r.	o. r.	o. r.
94439	IREV-S24/3	12/20kV	120,0 - 300,0	1	o. r.	o. r.	o. r.

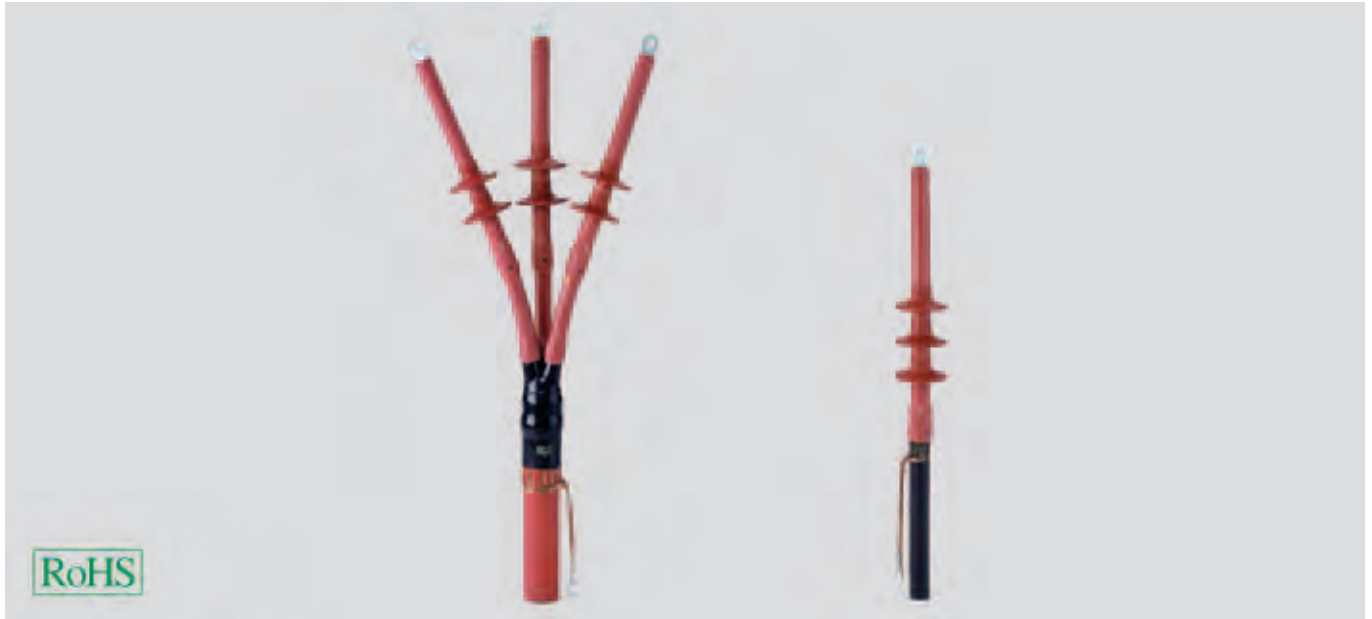
o. r. = on request



Cable accessories

FLEV-S

outdoor termination, shrinking type



FLEV-S

The outside end seals are suitable for all single-conductor and three-conductor medium-range voltage plastic cables with differing conductor layers and sheath designs up to 18/30(36)kV.

Properties

- Safe field effect
- Simple assembly
- Wider application range
- Excellent external layer behaviour
- Unlimited conductivity
- Immediately operational

Scope of delivery

- Unit: 1
- aufschiebbares Silikon-Feldsteuerelement
- sealing band
- creeping current resistant, weather-proof heat shrink-on tube
- assembly instruction
- aufschiebbares Silikonschirme

Notes

- An additional earthing kit is required for cables with copper sheath.
- Without terminals.
- 1 unit = 1 set with 3 items.

single core

Part No.	Type	Nominal voltage U ₀ /U(Um)	Cross section mm ²	Units	net EUR/items at acceptance of		
					1	2 - 5	6 - 10
93360	FLEV-S12/1	6/10kV	10,0 - 25,0	1	o. r.	o. r.	o. r.
93361	FLEV-S12/1	6/10kV	25,0 - 95,0	1	o. r.	o. r.	o. r.
94426	FLEV-S12/1	6/10kV	95,0 - 240,0	1	o. r.	o. r.	o. r.
93362	FLEV-S12/1	6/10kV	150,0 - 400,0	1	o. r.	o. r.	o. r.
93363	FLEV-S12/1	6/10kV	240,0 - 500,0	1	o. r.	o. r.	o. r.
94427	FLEV-S12/1	6/10kV	400,0 - 800,0	1	o. r.	o. r.	o. r.
94428	FLEV-S12/1	6/10kV	800,0 - 1000,0	1	o. r.	o. r.	o. r.
94429	FLEV-S24/1	12/20kV	10,0 - 35,0	1	o. r.	o. r.	o. r.
93364	FLEV-S24/1	12/20kV	25,0 - 150,0	1	o. r.	o. r.	o. r.
93365	FLEV-S24/1	12/20kV	70,0 - 240,0	1	o. r.	o. r.	o. r.
93366	FLEV-S24/1	12/20kV	120,0 - 300,0	1	o. r.	o. r.	o. r.
93380	FLEV-S24/1	12/20kV	240,0 - 500,0	1	o. r.	o. r.	o. r.
94430	FLEV-S24/1	12/20kV	630,0 - 1000,0	1	o. r.	o. r.	o. r.
93367	FLEV-S36/1	18/30kV	35,0 - 70,0	1	o. r.	o. r.	o. r.
93368	FLEV-S36/1	18/30kV	50,0 - 150,0	1	o. r.	o. r.	o. r.
93369	FLEV-S36/1	18/30kV	150,0 - 400,0	1	o. r.	o. r.	o. r.
93370	FLEV-S36/1	18/30kV	500,0 - 800,0	1	o. r.	o. r.	o. r.

3-core

Part No.	Type	Nominal voltage U ₀ /U(Um)	Cross section mm ²	Units	net EUR/items at acceptance of		
					1	2 - 5	6 - 10
94443	FLEV-S12/3	6/10kV	10,0 - 25,0	1	o. r.	o. r.	o. r.
93371	FLEV-S12/3	6/10kV	35,0 - 95,0	1	o. r.	o. r.	o. r.
93372	FLEV-S12/3	6/10kV	95,0 - 240,0	1	o. r.	o. r.	o. r.
93373	FLEV-S12/3	6/10kV	150,0 - 400,0	1	o. r.	o. r.	o. r.
94444	FLEV-S24/3	12/20kV	10,0 - 35,0	1	o. r.	o. r.	o. r.
94445	FLEV-S24/3	12/20kV	25,0 - 95,0	1	o. r.	o. r.	o. r.
94446	FLEV-S24/3	12/20kV	95,0 - 185,0	1	o. r.	o. r.	o. r.
94447	FLEV-S24/3	12/20kV	120,0 - 300,0	1	o. r.	o. r.	o. r.

o. r. = on request



Cable accessories

MSVM-A

medium voltage straight-through joint with slip-on method



MSVM-A

The centre tension transition sleeve in push-on technology is suitable for connecting single-core plastic power cables up to 12/20(24)kV. For connecting cables with differing cross-sections, conductor materials and cable designs with regard to external conductor layer and sheathing.

Properties

- Quick and simple assembly
- Large cross-sections
- Unlimited conductivity
- Immediately operational

Scope of delivery

- Unit: 1
- two suspensible silicon control elements
- one-piece silicon insulating body with integrated conductor smoothing
- thick-walled heat shrink-on tube
- cooper fabric shielding
- assembly instruction

Part No.	Type	Nominal voltage U ₀ /U(U _m)	Cross section mm ²	Units	net EUR/items at acceptance of		
					1	2 - 5	6 - 10
94350	MSVM-A12	6/10kV	25,0 - 95	1	o. r.	o. r.	o. r.
94351	MSVM-A12	6/10kV	50 - 240,0	1	o. r.	o. r.	o. r.
94352	MSVM-A12	6/10kV	25,0 - 240,0	1	o. r.	o. r.	o. r.
94353	MSVM-A12	6/10kV	240,0 - 400,0	1	o. r.	o. r.	o. r.
94355	MSVM-A24	12/20kV	16,0 - 50,0	1	o. r.	o. r.	o. r.
94356	MSVM-A24	12/20kV	35,0 - 95,0	1	o. r.	o. r.	o. r.
94357	MSVM-A24	12/20kV	70,0 - 150	1	o. r.	o. r.	o. r.
94358	MSVM-A24	12/20kV	120,0 - 240,0	1	o. r.	o. r.	o. r.
94359	MSVM-A24	12/20kV	35,0 - 240,0	1	o. r.	o. r.	o. r.

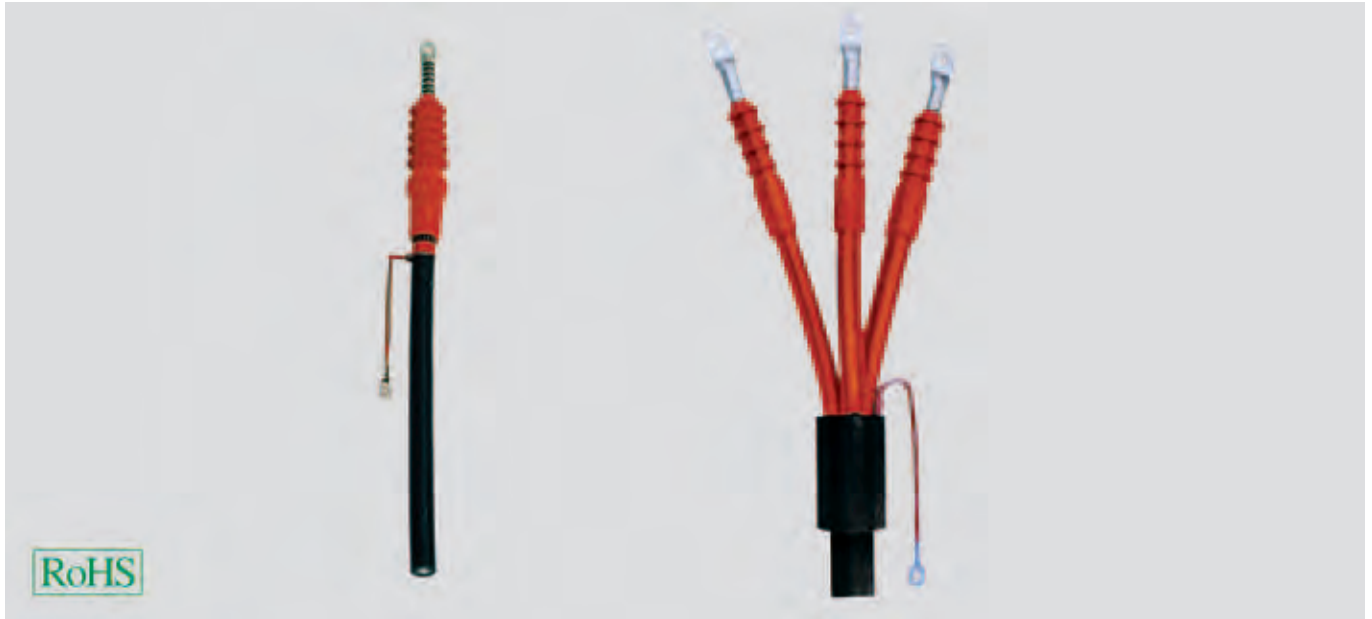
o. r. = on request



Cable accessories

IREV-A / FLEV-A

termination with slip-on method



IREV-AK/FLEV-A

The interior end seals and outside end seals in push-on technology are suitable for all single-conductor medium-range voltage plastic cables with differing conductor layers and sheath designs up to 18/30(36)kV.

Properties

- Simple, quick assembly
- Large cross-sections
- Unlimited conductivity
- No pre-expansion
- No flame or heat source required
- Immediately operational

Scope of delivery

- Unit: 1
- one-piece suspensible silicon end lock
- integrated field control
- assembly instruction

indoor termination with slip-on method

Part No.	Type	Nominal voltage U ₀ /U(Um)	Cross section mm ²	Units	net EUR/items at acceptance of		
					1	2 - 5	6 - 10
94370	IREV-A12	6/10kV	25,0 - 95,0	1	o. r.	o. r.	o. r.
94371	IREV-A12	6/10kV	95,0 - 240,0	1	o. r.	o. r.	o. r.
94372	IREV-A12	6/10kV	150,0 - 400,0	1	o. r.	o. r.	o. r.
94373	IREV-A12	6/10kV	240,0 - 500,0	1	o. r.	o. r.	o. r.
94374	IREV-A12	6/10kV	300,0 - 800,0	1	o. r.	o. r.	o. r.
94375	IREV-A24	12/20kV	10,0 - 35,0	1	o. r.	o. r.	o. r.
94376	IREV-A24	12/20kV	35,0 - 120,0	1	o. r.	o. r.	o. r.
94377	IREV-A24	12/20kV	70,0 - 240,0	1	o. r.	o. r.	o. r.
94378	IREV-A24	12/20kV	120,0 - 400,0	1	o. r.	o. r.	o. r.
94379	IREV-A24	12/20kV	240,0 - 630,0	1	o. r.	o. r.	o. r.
94380	IREV-A36	18/30kV	16,0 - 95,0	1	o. r.	o. r.	o. r.
94381	IREV-A36	18/30kV	50,0 - 240,0	1	o. r.	o. r.	o. r.
94382	IREV-A36	18/30kV	120,0 - 400,0	1	o. r.	o. r.	o. r.

out-door termination with slip-on technique

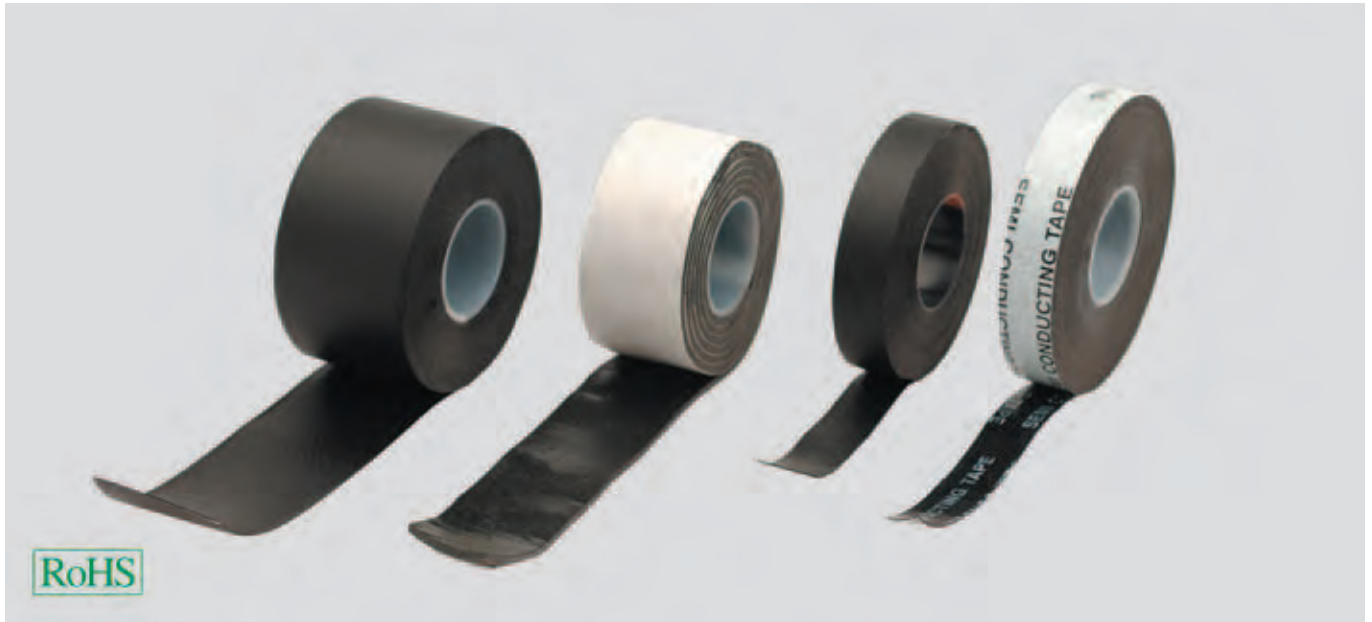
Part No.	Type	Nominal voltage U ₀ /U(Um)	Cross section mm ²	Units	net EUR/items at acceptance of		
					1	2 - 5	6 - 10
94383	FLEV-A12	6/10kV	25,0 - 70,0	1	o. r.	o. r.	o. r.
94384	FLEV-A12	6/10kV	95,0 - 150,0	1	o. r.	o. r.	o. r.
94385	FLEV-A12	6/10kV	120,0 - 240,0	1	o. r.	o. r.	o. r.
94386	FLEV-A12	6/10kV	185,0 - 300,0	1	o. r.	o. r.	o. r.
94387	FLEV-A12	6/10kV	300,0 - 500,0	1	o. r.	o. r.	o. r.
94388	FLEV-A24	12/20kV	10,0 - 35,0	1	o. r.	o. r.	o. r.
94389	FLEV-A24	12/20kV	35,0 - 120,0	1	o. r.	o. r.	o. r.
94390	FLEV-A24	12/20kV	70,0 - 240,0	1	o. r.	o. r.	o. r.
94391	FLEV-A24	12/20kV	120,0 - 400,0	1	o. r.	o. r.	o. r.
94392	FLEV-A24	12/20kV	240,0 - 630,0	1	o. r.	o. r.	o. r.
94393	FLEX-A36	18/30kV	50,0 - 240,0	1	o. r.	o. r.	o. r.
94394	FLEX-A36	18/30kV	120,0 - 400,0	1	o. r.	o. r.	o. r.

o. r. = on request



Cable accessories

medium voltage accessories



Medium-range voltage accessories

KMRS: for a fast, reliable repair of sheath damage up to 1000 V. Consisting of cable sheath repair tape, emery cloth, cleaning cloth.

Sealant: for cable penetration, halogen-free dual-component PUR cast resin, practical dual chamber mixing bag.

Sealing tape, black: for sealing cable and line gussets, repair of damaged cable sheaths, water-tight sealing of cable penetrations.

Properties

KMRS: vulcanising, extremely good electrical properties; outstanding tensile strength, absolute moisture tight.

Sealant: good adhesion to metals, plastic, concrete, plastic and natural stones; removable, environmentally compatible, gas and water-tight to 1.5 bar, soft-elastic following hardening.

Sealing tape: very good adhesion to metal, glass, rubber, plastic, good dielectric and physical properties.

Scope of delivery

KMRS:

- Cable jacket repair tape
- Sanding
- Cleaning tissue

Sealant:

- Casting resin

Sealing tape:

- Colour: black

KMRS repair set

Part No.	Type	Description	Thickness x Width mm x mm	Content	Units	net EUR/items at acceptance of		
						1	2 - 5	6 - 10
93141	KMRS	Cable sheath repair set	-	Mixed bag	1	o. r.	o. r.	o. r.

LG 250/500 sealing compound

Part No.	Type	Description	Thickness x Width mm x mm	Content	Units	net EUR/items at acceptance of		
						1	2 - 5	6 - 10
93125	Sealant	LG 250 (incl. spatula)	-	250,0 ml	1	o. r.	o. r.	o. r.
93126	Sealant	LG 500 (incl. spatula)	-	500,0 ml	1	o. r.	o. r.	o. r.

sealing tape

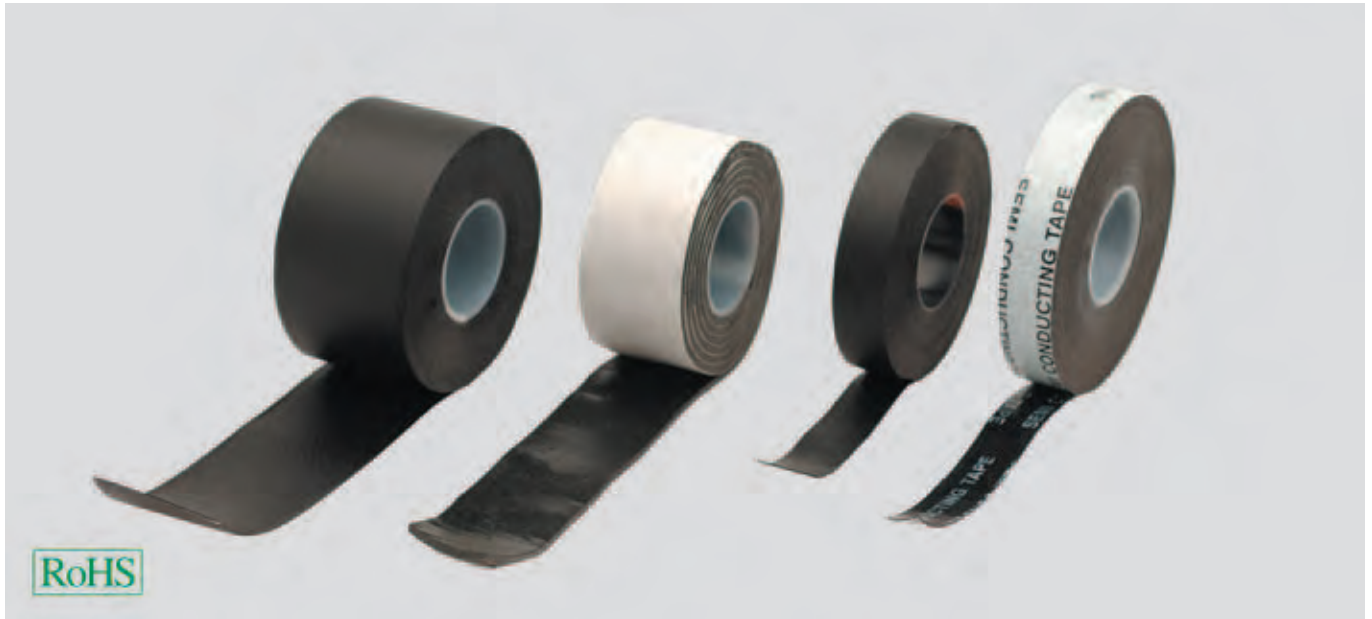
Part No.	Type	Description	Thickness x Width mm x mm	Content	Units	Netto EUR/Stück bei Abnahme von		
						1	2 - 5	6 - 10
93127	Sealing tape	-	3,2 x 38	1,52 m	1	o. r.	o. r.	o. r.

o. r. = on request



Cable accessories

medium voltage accessories



Medium-range voltage accessories

HSIB, black: as conductor insulation for plastic-insulated cables to 69kV, repair and connection of numerous insulating and cable materials, for sealing casting moulds and stuffing cable insulation.

Line warning tape, yellow with black marking: used as an early warning device for excavation work. It should be placed approx. 40 cm above the supply line, PE laminated film.

Properties

HSIB: good electric and physical properties guarantee long tool life, good dielectric properties, highly weather-resistant, extremely expandable, non-adhesive, welds quickly to form homogenous, cavity-free mass, easy to handle, easy to process, completely removable.

Line warning tape: Good warning effect through more than 400% expansion, colour-fast, age and cold-resistant, expansion remains unchanged, permanently legible through crystal clear film coating over lettering.

Scope of delivery

HSIB:

- Colour: black

Line warning tape:

- with black inscription

high voltage insulation tape

Part No.	Type	Description	Thickness x Width mm x mm	Content	Units	net EUR/items at acceptance of		
						1	2 - 5	6 - 10
93128	HSIB	High-voltage insulating tape	0,5 x 19,0	10 m	1	o. r.	o. r.	o. r.
93129	HSIB	High-voltage insulating tape	0,75 x 19,0	10 m	1	o. r.	o. r.	o. r.

line warning tape

Part No.	Type	Description	Thickness x Width mm x mm	Content	Units	net EUR/items at acceptance of		
						1	2 - 5	6 - 10
93130	Line warning tape	Caution: cable	0,15 x 40,0	250 m	1	o. r.	o. r.	o. r.
93131	Line warning tape	Caution: high-voltage cable	0,15 x 40,0	250 m	1	o. r.	o. r.	o. r.
93132	Line warning tape	Caution: telephone cable	0,15 x 40,0	250 m	1	o. r.	o. r.	o. r.
93133	Line warning tape	Caution: street lighting	0,15 x 40,0	250 m	1	o. r.	o. r.	o. r.

o. r. = on request



Cable accessories

HDKS

cable lead-through



HDKS

For HDKS, cables and lines routed through walls afford mechanical protection and seal them against moisture.

Material

- Polyolefine
- non-leaded
 - cadmium-free

Colour: black

Properties

- Inside coated with sealant
- Non-corrosive
- UV-resistant
- Halogen-free
- Infusible, cold flow resistant (heat stable)
- Resistant to aliphatic hydrocarbons, earth salts, earth alkalis

Part No.	Type	Length mm	Cable Ø from mm	Cable Ø to mm	Breakout mm	Units	net EUR/items at acceptance of		
							1	2 - 5	6 - 10
93155	HDSK 14	800,0	8,0	14,0	40,0	1	o. r.	o. r.	o. r.
93156	HDSK 26	800,0	12,0	26,0	55,0	1	o. r.	o. r.	o. r.
93157	HDSK 41	800,0	16,0	41,0	70,0	1	o. r.	o. r.	o. r.
93158	HDSK 54	800,0	26,0	54,0	90,0	1	o. r.	o. r.	o. r.
93159	HDSK 95	800,0	54,0	95,0	140,0	1	o. r.	o. r.	o. r.

o. r. = on



Cable accessories

Degreasing spray



Degreasing spray

Removes contamination caused by grease, oil, wax or tar and is particularly suitable for cleaning cables and lines and washing off conducting layers and insulators. Other applications: Engines, battery chargers, pumps etc.

Properties

- cleans and degreases without conducting
- CFC-free
- No decomposition
- No free spraying of the spray head
- Loosens semiconducting residues (e.g. graphite layers)
- Can be used on neoprene, PE, EPR, XLPE, PVC, butyl-rubber and thermoplastic insulations

Notes

Container is under pressure, protect before heating to above 50°C (e.g. direct exposure to sun). Do not spray against flames or red hot parts. Do not spray into eyes, FLAMMABLE - the propellants and solvents can form narcotic mixtures. The propellant is heavier than air, exercise extreme caution when using in small hollows. Ensure adequate ventilation when using in closed rooms. Do not smoke. After use, do not open using force and do not burn. Store in a cool place, protect against electrostatic discharge.

Part No.	Type	Content	Units	net EUR/items at acceptance of		
				1	2-5	6-10
94148	Degreaser	400,0	1	o. r.	o. r.	o. r.

o. r. = on request



Cable accessories

325

Cables & wires

**We design, manufacture and supply
for all markets and every application.**



HELUKABEL® provides cables and wires for all markets and for all applications. The comprehensive standard and warehouse stock leaves hardly anything to be desired and comprises:

- Control cables
- Data and computer cables
- Heat-resistant cables
- Cables for foreign standards
- Halogen-free cables
- Coaxial cables
- Fibre optics
- Flat cables
- Vehicle cables
- Installation cables
- High-voltage / medium voltage cables
- Servo and sensor cables
- Drag chain cables
- Robot cables
- Network cables
- Spiral and pre-assembled cables



Cable accessories