

HUMMEL products are available from MARYLAND METRICS

P.O.Box 261 Owings Mills, MD 21117 USA

phones: (410)358-3130 (800)638-1830 faxes: (410)358-3142 (800)872-9329

email: sales@mdmetric.com web: <http://mdmetric.com>



Setting Standards

Conduit Fittings

Miscellaneous conduit fitting systems made of plastic or nickel plated brass for general applications in machine tool and equipment manufacturing.

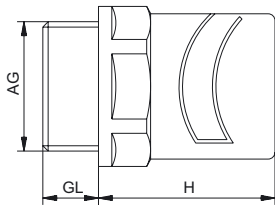
The conduit fitting system EH is universal and can be adapted to nearly all common conduit systems.

SM-N	Patented quick assembly for conduit
SM-W	Patented snap-elbow quick assembly for conduit
SM-WS	Conduit for the patented SM system
UH	Mounting brackets
EH	Conduit fitting made of nylon 6/6
EH-W	90° Elbow conduit fittings made of nylon 6/6
KF-W	Snap-flange
HSK-EH	Combined conduit / strain relief fittings made of nylon 6/6



SM-N

Metr./PG/NPT



Material
Protection

Operating
Temperature
Colors

PA (Nylon)
IP 54 (NEMA 2)
with optional O-Ring
and in case of fixed mounting IP 65

-20 °C – 80 °C (-4 °F – 176 °F)
grey RAL 7031
black RAL 9005

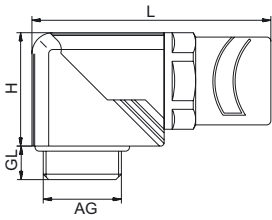


AG	GL mm	H mm	mm	Fits to SM-Conduit DN	Number grey	Number black
M 16 x 1,5	8	23	17	10	1.511.1600.50	1.511.1601.50
M 20 x 1,5	9	28	24	14	1.511.2000.50	1.511.2001.50
M 25 x 1,5	11	32	35	23	1.511.2500.50	1.511.2501.50
M 32 x 1,5	11	35	42	29	1.511.3200.50	1.511.3201.50
PG 9	8	23	17	10	1.511.0900.14	1.511.0901.14
PG 11	8	25	21	12	1.511.1100.14	1.511.1101.14
PG 13,5	9	28	24	14	1.511.1300.14	1.511.1301.14
PG 16	10	29	27	17	1.511.1600.14	1.511.1601.14
PG 21	11	32	35	23	1.511.2100.14	1.511.2101.14
PG 29	11	35	42	29	1.511.2900.14	1.511.2901.14
PG 36	13	41	50	37	1.511.3600.14	1.511.3601.14
PG 48	14	46	64	50	1.511.4800.14	1.511.4801.14
NPT 3/8"	15	23	17	10	1.511.3800.70	1.511.3801.70
NPT 1/2"	13	29	27	17	1.511.1216.70	1.511.1217.70
NPT 3/4"	13	32	35	23	1.511.3400.70	1.511.3401.70
NPT 1"	15	35	42	29	1.511.1000.70	1.511.1001.70



SM-W

Metr./PG/NPT

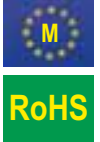


Material
O-Ring
Protection

Operating
Temperature
Colors

PA (Nylon)
Buna-N
IP 54 (NEMA 2)
in case of fixed mounting IP 65

-20 °C – 80 °C (-4 °F – 176 °F)
black RAL 9005



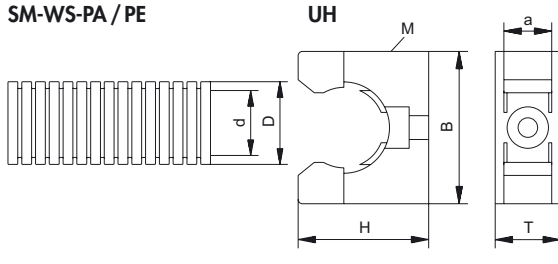
AG	GL mm	H mm	L mm	Ø mm	Fits to SM-Conduit DN	Number
M 16 x 1,5	8	23	43	19	10	1.513.1601.50
M 20 x 1,5	9	30,5	52	24	14	1.513.2001.50
M 25 x 1,5	11	40	70	33	23	1.513.2501.50
M 32 x 1,5	11	51,5	83	42	29	1.513.3201.50
PG 9	8	23	43	19	10	1.513.0901.14
PG 11	8	27	48	22	12	1.513.1101.14
PG 13,5	9	30,5	52	24	14	1.513.1301.14
PG 16	10	32,5	56	27	17	1.513.1601.14
PG 21	11	40	70	33	23	1.513.2101.14
PG 29	11	51,5	83	42	29	1.513.2901.14
NPT 3/8"	15	23	43	19	10	1.513.3801.70
NPT 1/2"	13	32,5	56	27	17	1.513.1217.70
NPT 3/4"	13	40	70	33	23	1.513.3401.70
NPT 1"	15	51,5	83	42	29	1.513.1001.70



SM-WS-PA/PE/UH

DN

SM-WS-PA / PE



Material: PA (Nylon) / PE / PVDF
 Operating: -40 °C – 110 °C (PA) / -40 °C – 80 °C (PE)
 Temperature: -50 °C – 150 °C (PVDF)
 Colors: grey RAL 7011, black RAL 9005 (for PVDF available upon request)



Mounting bracket UH

Material: PA
 Operating Temperature: -40 °C – 110 °C
 Colors: grey RAL 7011, black RAL 9005

SM-WS-PA / PE

Mounting bracket UH

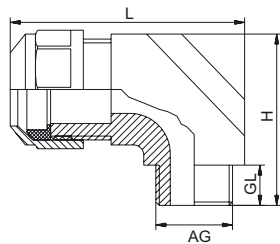
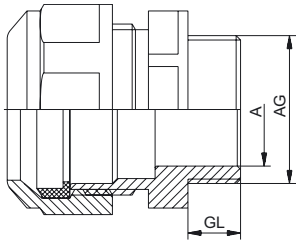
Size DN	Type	d mm	D mm	Number grey	Number black
10	PA	10	13	1.510.0900.14	1.510.0901.14
12	PA	12	15,5	1.510.1100.14	1.510.1101.14
14	PA	14	18,5	1.510.1300.14	1.510.1301.14
17	PA	16,5	21	1.510.1600.14	1.510.1601.14
23	PA	22,5	28,5	1.510.2100.14	1.510.2101.14
29	PA	28,5	34,5	1.510.2900.14	1.510.2901.14
37	PA	36	42	1.510.3600.14	1.510.3601.14
50	PA	47,5	54	1.510.4800.14	1.510.4801.14
10	PE	10	13	1.520.0900.14	1.520.0901.14
12	PE	12	15,5	1.520.1100.14	1.520.1101.14
14	PE	14	18,5	1.520.1300.14	1.520.1301.14
17	PE	16,5	21	1.520.1600.14	1.520.1601.14
23	PE	22,5	28,5	1.520.2100.14	1.520.2101.14
29	PE	28,5	34,5	1.520.2900.14	1.520.2901.14
37	PE	36	42	1.520.3600.14	1.520.3601.14
50	PE	47,5	54	1.520.4800.14	1.520.4801.14

Size DN	B mm	H mm	T mm	M mm	a mm	Number grey	Number black
10	30	23	12,5	4	6,5	1.724.0900.11	1.724.0901.11
12	30	23	12,5	4	6,5	1.724.1100.11	1.724.1101.11
17	35	30	15,0	5	6,5	1.724.1600.11	1.724.1601.11
23	42	38	16,0	6	11,5	1.724.2100.11	1.724.2101.11
29	51	49	16,0	6	11,5	1.724.2900.11	1.724.2901.11
37	61	51	18,0	6	11,5	1.724.3600.11	1.724.3601.11
50	74	64	19,0	6	11,5	1.724.4800.11	1.724.4801.11



EH/EH-W

PG





Material Protection
Operating Temperature
Colors

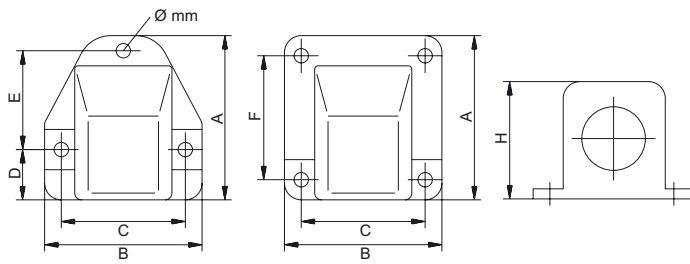
PA (Nylon)
IP 65
-30 °C – 100 °C (-22 °F – 212 °F)
grey RAL 7035
black RAL 9005

RoHS

Fittings with metric threads available upon request

AG	 mm	GL mm	A mm	H mm	L mm	 mm	Fits to SM-Conduit DN	Number grey	Number black
EH									
PG 7	13 - 15	8	10,5			19/22	10	1.220.0715.11	1.220.0715.12
PG 9	13 - 15	8	10,5			19/22	10	1.220.0915.11	1.220.0915.12
PG 9	15 - 17	8	10,5			22/24	12	1.220.0917.11	1.220.0917.12
PG 9	19 - 21	8	10,5			27/30	17	1.220.0921.11	1.220.0921.12
PG 11	15 - 17	8	14			22/24	12	1.220.1117.11	1.220.1117.12
PG 11	19 - 21	8	14			27/30	17	1.220.1121.11	1.220.1121.12
PG 13,5	19 - 21	8	14,5			27/30	17	1.220.1321.11	1.220.1321.12
PG 16	19 - 21	8	17,1			27/30	17	1.220.1621.11	1.220.1621.12
PG 21	26 - 29	10	23			36/38	23	1.220.2128.11	1.220.2128.12
PG 29	33 - 36	10	31			46	29	1.220.2936.11	1.220.2936.12
PG 36	42 - 46	12	39,5			55	37	1.220.3646.11	1.220.3646.12
PG 48	52 - 58	12	51,5			65	50	1.220.4858.11	1.220.4858.12
EH-W									
PG 9	13 - 15	8		24	57	22	10	1.223.0915.11	1.223.0915.12
PG 11	15 - 17	8		29	64	24	12	1.223.1117.11	1.223.1117.12
PG 13,5	19 - 21	10		33	68	30	17	1.223.1321.11	1.223.1321.12
PG 16	19 - 21	10		33	68	30	17	1.223.1621.11	1.223.1621.12
PG 21	26 - 29	11		41	79	38	23	1.223.2128.11	1.223.2128.12
PG 29	33 - 36	11		55	95	46	29	1.223.2936.11	1.223.2936.12





Material
Seal
Protection
Operating
Temperature
Colors

PA (Nylon)
Buna-N
IP 65

-20 °C – 80 °C (-4 °F – 176 °F)
grey RAL 7011
black RAL 9005

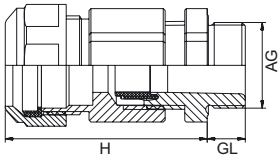


Fits to SM-Conduit DN	Ø mm	A mm	B mm	C mm	D mm	F mm	H mm	Number grey	Number black
12	4	49	47	37	15	29,5	35	1.312.1100.15	1.312.1101.15
17	4	49	47	37	15	29,5	35	1.312.1600.15	1.312.1601.15
23	6	69	65	52	21	42	44	1.312.2100.15	1.312.2101.15
29	6	90	78	65		65	55	1.312.2900.15	1.312.2901.15
37	6	100	94	80		80	66	1.312.3600.15	1.312.3601.15
50	6	116	101	88		90	76	1.312.4800.15	1.312.4801.15



HSK-EH

Metr./PG/NPT



Material
Seal
Protection
Operating
Temperature

PA (Nylon)
Buna-N
IP 65

-40 °C – 110 °C
(-40 °F – 212 °F)
grey RAL 7035
black RAL 9005



Colors

AG	GL mm	H mm	mm	mm	Conduit mm	Fits to SM-Conduit DN	Number grey	Number black
M 16 x 1,5	8	44	19 / 22	4 - 8	13 - 15	10		1.224.1615.52
M 20 x 1,5	9	49	24 / 30	6 - 12	19 - 21	17		1.224.2021.52
M 25 x 1,5	11	59	33 / 38	13 - 18	26 - 29	23		1.224.2518.52
PG 9	8	44	19 / 22	4 - 8	13 - 15	10	1.224.0915.11	1.224.0915.12
PG 11	8	47	22 / 24	5 - 10	15 - 17	12	1.224.1117.11	1.224.1117.12
PG 13,5	9	49	24 / 30	6 - 12	19 - 21	17	1.224.1321.11	1.224.1321.12
PG 16	10	50	27 / 30	10 - 14	19 - 21	17	1.224.1621.11	1.224.1621.12
PG 21	11	59	33 / 38	13 - 18	26 - 29	23	1.224.2128.11	1.224.2128.12
3/8" NPT	15	51	19 / 22	4 - 8	13 - 15	10		1.224.3815.72
1/2" NPT	13	53	24 / 30	6 - 12	19 - 21	17		1.224.1221.72
3/4" NPT	13	61	33 / 38	13 - 18	26 - 29	23		1.224.3418.72

