

HUMMEL products are available from MARYLAND METRICS

P.O.Box 261 Owings Mills, MD 21117 USA

phones: (410)358-3130 (800)638-1830 faxes: (410)358-3142 (800)872-9329

email: sales@mdmetric.com web: http://mdmetric.com



Setting Standards

## HSK-Ex Accessories

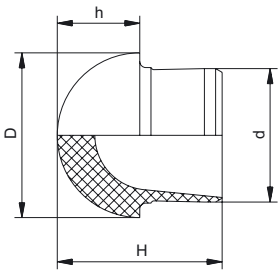
Accessories to be used in conjunction with HSK-Industry Standard liquid tight strain relief fittings

- HSK-V-Ex** Plugs for strain relief fittings for hazardous locations
- V-Ex** Threaded plugs for Ex applications made of nylon 6/6
- V-Ms-Ex** Threaded plugs for Ex applications made of nickel plated brass
- V-Ms-FPM-Ex** Threaded plugs for Ex applications made of nickel plated brass
- V-Ms-VMQ-Ex** Threaded plugs for Ex applications made of nickel plated brass
- RSD-Ms-Ex** Reducing bushing for Ex applications made of nickel plated brass
- V-INOX-Ex** Threaded stainless steel plugs for Ex applications.
- RSD-INOX-Ex** Reducing bushing made of stainless steel for Ex applications.



# HSK-V-Ex

# Metr./PG/NPT



Material: Elastomer  
 Operating Temperature: -20 °C – 95 °C (-4 °F – 203 °F)  
 Colors: black RAL 9005



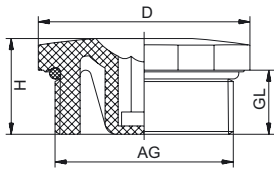
EEx e II BVS 03 ATEX E 298

Continuous Temperature rating -40°C – 95°C available upon request

For approvals see page 162

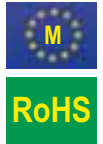
Fits the Following Sizes			D	d	H	h	Number
			mm	mm	mm	mm	
PG 7	M 12 x 1,5		9,5	6,3	11,5	4,5	1.296.0701.11
PG 9	M 16 x 1,5	NPT 3/8"	11	7,8	13,5	5,5	1.296.0901.11
PG 11			13,5	9,8	14,5	5,5	1.296.1101.11
PG 13,5	M 20 x 1,5	NPT 1/2"	16	11,8	18	8	1.296.1301.11
PG 16		NPT 1/2"/16	18,5	13,8	19	9	1.296.1601.11
PG 21	M 25 x 1,5	NPT 3/4"	22	17,8	22	11	1.296.2101.11
PG 29	M 32 x 1,5	NPT 1" NPT 1 1/4"	29	25	25	10	1.296.2901.11
PG 36	M 40 x 1,5	NPT 1 1/2"	38	32	28	11	1.296.3601.11
PG 42	M 50 x 1,5		43	38	30	12	1.296.4201.11
PG 48	M 63 x 1,5		49	44	30	12	1.296.4801.11







Material PA (Nylon)  
 O-Ring Buna-N  
 Protection IP 68 – 10 bar / IP 69K (NEMA 6 – 150 PSIG)

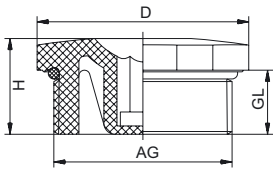
Operating Temperature -20 °C – 90 °C (-4 °F – 194 °F)  
 Colors black RAL 9005



For approvals see page 162

AG	GL mm	H mm	D mm	 mm	 mm	Number
M 12 x 1,5	8,5	13	16,5	15	6	1.297.1201.50
M 16 x 1,5	8,5	13	20,5	19	8	1.297.1601.50
M 20 x 1,5	9	14,5	25,5	24	8	1.297.2001.50
M 25 x 1,5	10,5	16	30,5	28	8	1.297.2501.50
M 32 x 1,5	11,5	17,5	38	36	8	1.297.3201.50
M 40 x 1,5	11,5	18	48	46	8	1.297.4001.50
M 50 x 1,5	13,5	20	60	55	8	1.297.5001.50
M 63 x 1,5	14,5	21	75	70	8	1.297.6301.50







Material PA (Nylon)  
 O-Ring Buna-N  
 Protection IP 68 – 10 bar / IP 69K (NEMA 6 – 150 PSIG)

Operating Temperature -20 °C – 90 °C (-4 °F – 194 °F)  
 Colors black RAL 9005



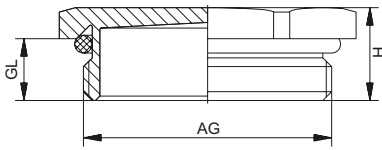
For approvals see page 162

AG	GL mm	H mm	D mm	 mm	 mm	Number
PG 7	8,5	13	16,5	15	6	1.297.0701.11
PG 9	8,5	13	20,5	19	8	1.297.0901.11
PG 11	9	14,5	25,5	24	8	1.297.1101.11
PG 13,5	9	14,5	25,5	24	8	1.297.1301.11
PG 16	10,5	16	30,5	28	8	1.297.1601.11
PG 21	11,5	17,5	38	36	8	1.297.2101.11
PG 29	11,5	18	48	46	8	1.297.2901.11
PG 36	13,5	20	60	55	8	1.297.3601.11
PG 42	13,5	20	65	60	8	1.297.4201.11
PG 48	14,5	21	75	70	8	1.297.4801.11



# V-Ms- / Ms-FPM- / Ms-VMQ-Ex

# Metr. / PG



**ATEX**  
II 2G 1D



Material  
Protection

Nickel plated brass  
IP 68 – 10 bar / IP 69K  
(NEMA 6 – 150 PSIG)

V-Ms-Ex  
O-Ring

Buna-N

V-Ms-FPM-Ex  
O-Ring

FPM

V-Ms-VMQ-Ex  
O-Ring

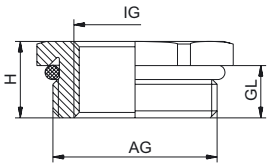
VMQ

For approvals see page 162



AG	Ex- Generation	GL mm	H mm	mm	V-Ms-Ex -20°C – 95°C (-4°F – 203°F)	V-Ms-FPM-Ex -20°C – 180°C (-4°F – 356°F)	V-Ms-VMQ-Ex -60°C – 180°C (-76°F – 356°F)
M 12 x 1,5	ATEX	6,5	9,5	14	1.197.1200.50	1.198.1200.50	1.199.1200.50
M 16 x 1,5	ATEX	6	9	19	1.197.1600.50	1.198.1600.50	1.199.1600.50
M 20 x 1,5	ATEX	6	9,5	22	1.197.2000.50	1.198.2000.50	1.199.2000.50
M 25 x 1,5	ATEX	7	10,5	30	1.197.2500.50	1.198.2500.50	1.199.2500.50
M 32 x 1,5	ATEX	8	12,5	41	1.197.3200.50	1.198.3200.50	1.199.3200.50
M 40 x 1,5	ATEX	8	13	46	1.197.4000.50	1.198.4000.50	1.199.4000.50
M 50 x 1,5	ATEX	9	15	55	1.197.5000.50	1.198.5000.50	1.199.5000.50
M 63 x 1,5	ATEX	10	16,5	70	1.197.6300.50	1.198.6300.50	1.199.6300.50
PG 7	ATEX	5	8	14	1.197.0700.01	1.198.0700.01	1.199.0700.01
PG 9	ATEX	6	9	17	1.197.0900.01	1.198.0900.01	1.199.0900.01
PG 11	ATEX	6	9,5	20	1.197.1100.01	1.198.1100.01	1.199.1100.01
PG 13,5	ATEX	6,5	10	22	1.197.1300.01	1.198.1300.01	1.199.1300.01
PG 16	ATEX	6,5	10	24	1.197.1600.01	1.198.1600.01	1.199.1600.01
PG 21	ATEX	7	10,5	30	1.197.2100.01	1.198.2100.01	1.199.2100.01
PG 29	ATEX	8	12,5	41	1.197.2900.01	1.198.2900.01	1.199.2900.01
PG 36	ATEX	8	13	50	1.197.3600.01	1.198.3600.01	1.199.3600.01
PG 42	ATEX	9	15	58	1.197.4200.01	1.198.4200.01	1.199.4200.01
PG 48	ATEX	10	16,5	65	1.197.4800.01	1.198.4800.01	1.199.4800.01





**ATEX**  
II 2G 1D



Material  
O-Ring  
Protection

Nickel plated brass  
Buna-N/VQM  
IP 69K

EEx e II DMT 03 ATEX E 049

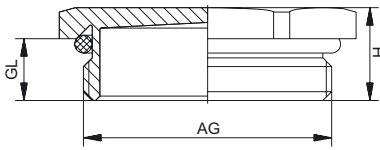
For approvals see page 162



AG	IG	GL mm	H mm	Buna-N		VQM	
				20°C - 95°C (-4°F - 208°F)	-60°C - 180°C (-76°F - 356°F)	20°C - 95°C (-4°F - 208°F)	-60°C - 180°C (-76°F - 356°F)
M 16 x 1,5	M 12 x 1,5	5	17	1.078.1612.50	1.079.1612.50		
M 20 x 1,5	M 12 x 1,5	6	22	1.078.2012.50	1.079.2012.50		
M 20 x 1,5	M 16 x 1,5	6	22	1.078.2016.50	1.079.2016.50		
M 25 x 1,5	M 16 x 1,5	7	27	1.078.2516.50	1.079.2516.50		
M 25 x 1,5	M 20 x 1,5	7	27	1.078.2520.50	1.079.2520.50		
M 32 x 1,5	M 16 x 1,5	8	34	1.078.3216.50	1.079.3216.50		
M 32 x 1,5	M 20 x 1,5	8	34	1.078.3220.50	1.079.3220.50		
M 32 x 1,5	M 25 x 1,5	8	34	1.078.3225.50	1.079.3225.50		
M 40 x 1,5	M 20 x 1,5	8	43	1.078.4020.50	1.079.4020.50		
M 40 x 1,5	M 25 x 1,5	8	43	1.078.4025.50	1.079.4025.50		
M 40 x 1,5	M 32 x 1,5	8	43	1.078.4032.50	1.079.4032.50		
M 50 x 1,5	M 25 x 1,5	9	55	1.078.5025.50	1.079.5025.50		
M 50 x 1,5	M 32 x 1,5	9	55	1.078.5032.50	1.079.5032.50		
M 50 x 1,5	M 40 x 1,5	9	55	1.078.5040.50	1.079.5040.50		
M 63 x 1,5	M 32 x 1,5	10	65	1.078.6332.50	1.079.6332.50		
M 63 x 1,5	M 40 x 1,5	10	65	1.078.6340.50	1.079.6340.50		
M 63 x 1,5	M 50 x 1,5	10	65	1.078.6350.50	1.079.6350.50		

AG	IG	GL mm	H mm	H mm	Buna-N		VQM	
					20°C - 95°C (-4°F - 208°F)	-60°C - 180°C (-76°F - 356°F)	20°C - 95°C (-4°F - 208°F)	-60°C - 180°C (-76°F - 356°F)
PG 9	PG 7	6	8,8	17	1.078.0907.01	1.079.0907.01		
PG 11	PG 7	6	9	20	1.078.1107.01	1.079.1107.01		
PG 11	PG 9	6	9	20	1.078.1109.01	1.079.1109.01		
PG 13,5	PG 9	6,5	9,5	22	1.078.1309.01	1.079.1309.01		
PG 16	PG 9	6,5	9,5	24	1.078.1609.01	1.079.1609.01		
PG 16	PG 11	6,5	9,5	24	1.078.1611.01	1.079.1611.01		
PG 16	PG 13,5	6,5	9,5	24	1.078.1613.01	1.079.1613.01		
PG 21	PG 11	7	10,3	30	1.078.2111.01	1.079.2111.01		
PG 21	PG 13,5	7	10,3	30	1.078.2113.01	1.079.2113.01		
PG 21	PG 16	7	10,3	30	1.078.2116.01	1.079.2116.01		
PG 29	PG 16	8	11,5	40	1.078.2916.01	1.079.2916.01		
PG 29	PG 21	8	11,5	40	1.078.2921.01	1.079.2921.01		
PG 36	PG 21	9	12,5	50	1.078.3621.01	1.079.3621.01		
PG 36	PG 29	9	12,5	50	1.078.3629.01	1.079.3629.01		
PG 42	PG 29	10	13,5	57	1.078.4229.01	1.079.4229.01		
PG 42	PG 36	10	13,5	57	1.078.4236.01	1.079.4236.01		
PG 48	PG 36	10	13,5	64	1.078.4836.01	1.079.4836.01		
PG 48	PG 42	10	13,5	64	1.078.4842.01	1.079.4842.01		





**ATEX**  
II 2G 1D



Material  
Protection

Stainless steel (1.4305)  
IP 68 – 10 bar / IP 69K  
(NEMA 6 – 150 PSIG)

**V-INOX-Ex**  
O-Ring

Buna-N

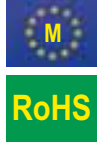
**V-INOX-FPM-Ex**  
O-Ring


FPM

**V-INOX-VMQ-Ex**  
O-Ring

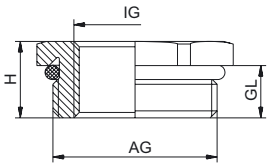
VMQ

For approvals see page 162



AG	Ex- Generation	GL mm	H mm	 mm	V-INOX-Ex -20°C – 95°C (-4°F – 203°F)	V-INOX-FPM-Ex -20°C – 180°C (-4°F – 356°F)	V-INOX-VMQ-Ex -60°C – 180°C (-76°F – 356°F)
M 12 x 1,5	ATEX	6,5	9,5	14	1.192.1200.50	1.193.1200.50	1.194.1200.50
M 16 x 1,5	ATEX	6	9	19	1.192.1600.50	1.193.1600.50	1.194.1600.50
M 20 x 1,5	ATEX	6	9,5	22	1.192.2000.50	1.193.2000.50	1.194.2000.50
M 25 x 1,5	ATEX	7	10,5	30	1.192.2500.50	1.193.2500.50	1.194.2500.50
M 32 x 1,5	ATEX	8	12,5	41	1.192.3200.50	1.193.3200.50	1.194.3200.50
M 40 x 1,5	ATEX	8	13	46	1.192.4000.50	1.193.4000.50	1.194.4000.50
M 50 x 1,5	ATEX	9	15	55	1.192.5000.50	1.193.5000.50	1.194.5000.50
M 63 x 1,5	ATEX	10	16,5	70	1.192.6300.50	1.193.6300.50	1.194.6300.50
PG 7	ATEX	5	8	14	1.192.0700.01	1.193.0700.01	1.194.0700.01
PG 9	ATEX	6	9	17	1.192.0900.01	1.193.0900.01	1.194.0900.01
PG 11	ATEX	6	9,5	20	1.192.1100.01	1.193.1100.01	1.194.1100.01
PG 13,5	ATEX	6,5	10	22	1.192.1300.01	1.193.1300.01	1.194.1300.01
PG 16	ATEX	6,5	10	24	1.192.1600.01	1.193.1600.01	1.194.1600.01
PG 21	ATEX	7	10,5	30	1.192.2100.01	1.193.2100.01	1.194.2100.01
PG 29	ATEX	8	12,5	41	1.192.2900.01	1.193.2900.01	1.194.2900.01
PG 36	ATEX	8	13	50	1.192.3600.01	1.193.3600.01	1.194.3600.01
PG 42	ATEX	9	15	58	1.192.4200.01	1.193.4200.01	1.194.4200.01
PG 48	ATEX	10	16,5	65	1.192.4800.01	1.193.4800.01	1.194.4800.01





**ATEX**  
**II 2G 1D**



Material  
O-Ring  
Protection

Stainless steel (1.4305)  
Buna-N/VQM  
IP 68 – 10 bar / IP 69K

EEx e II DMT 03 ATEX E 049

For approvals see page 162



AG	IG	GL mm	H mm	Buna-N		VQM	
				20°C – 95°C (-4°F – 208°F)	-60°C – 180°C (-76°F – 356°F)	20°C – 95°C (-4°F – 208°F)	-60°C – 180°C (-76°F – 356°F)
M 16 x 1,5	M 12 x 1,5	5	17	1.098.1612.50	1.099.1612.50		
M 20 x 1,5	M 12 x 1,5	6	22	1.098.2012.50	1.099.2012.50		
M 20 x 1,5	M 16 x 1,5	6	22	1.098.2016.50	1.099.2016.50		
M 25 x 1,5	M 16 x 1,5	7	27	1.098.2516.50	1.099.2516.50		
M 25 x 1,5	M 20 x 1,5	7	27	1.098.2520.50	1.099.2520.50		
M 32 x 1,5	M 16 x 1,5	8	34	1.098.3216.50	1.099.3216.50		
M 32 x 1,5	M 20 x 1,5	8	34	1.098.3220.50	1.099.3220.50		
M 32 x 1,5	M 25 x 1,5	8	34	1.098.3225.50	1.099.3225.50		
M 40 x 1,5	M 20 x 1,5	8	43	1.098.4020.50	1.099.4020.50		
M 40 x 1,5	M 25 x 1,5	8	43	1.098.4025.50	1.099.4025.50		
M 40 x 1,5	M 32 x 1,5	8	43	1.098.4032.50	1.099.4032.50		
M 50 x 1,5	M 25 x 1,5	9	55	1.098.5025.50	1.099.5025.50		
M 50 x 1,5	M 32 x 1,5	9	55	1.098.5032.50	1.099.5032.50		
M 50 x 1,5	M 40 x 1,5	9	55	1.098.5040.50	1.099.5040.50		
M 63 x 1,5	M 32 x 1,5	10	65	1.098.6332.50	1.099.6332.50		
M 63 x 1,5	M 40 x 1,5	10	65	1.098.6340.50	1.099.6340.50		
M 63 x 1,5	M 50 x 1,5	10	65	1.098.6350.50	1.099.6350.50		

AG	IG	GL mm	H mm	H mm	Buna-N		VQM	
					20°C – 95°C (-4°F – 208°F)	-60°C – 180°C (-76°F – 356°F)	20°C – 95°C (-4°F – 208°F)	-60°C – 180°C (-76°F – 356°F)
PG 9	PG 7	6	8,8	17	1.098.0907.01	1.099.0907.01		
PG 11	PG 7	6	9	20	1.098.1107.01	1.099.1107.01		
PG 11	PG 9	6	9	20	1.098.1109.01	1.099.1109.01		
PG 13,5	PG 9	6,5	9,5	22	1.098.1309.01	1.099.1309.01		
PG 13,5	PG 11	6,5	9,5	22	1.098.1311.01	1.099.1311.01		
PG 16	PG 9	6,5	9,5	24	1.098.1609.01	1.099.1609.01		
PG 16	PG 11	6,5	9,5	24	1.098.1611.01	1.099.1611.01		
PG 16	PG 13,5	6,5	9,5	24	1.098.1613.01	1.099.1613.01		
PG 21	PG 11	7	10,3	30	1.098.2111.01	1.099.2111.01		
PG 21	PG 13,5	7	10,3	30	1.098.2113.01	1.099.2113.01		
PG 21	PG 16	7	10,3	30	1.098.2116.01	1.099.2116.01		
PG 29	PG 16	8	11,5	40	1.098.2916.01	1.099.2916.01		
PG 29	PG 21	8	11,5	40	1.098.2921.01	1.099.2921.01		
PG 36	PG 21	9	12,5	50	1.098.3621.01	1.099.3621.01		
PG 36	PG 29	9	12,5	50	1.098.3629.01	1.099.3629.01		
PG 42	PG 29	10	13,5	57	1.098.4229.01	1.099.4229.01		
PG 42	PG 36	10	13,5	57	1.098.4236.01	1.099.4236.01		
PG 48	PG 36	10	13,5	64	1.098.4836.01	1.099.4836.01		
PG 48	PG 42	10	13,5	64	1.098.4842.01	1.099.4842.01		

