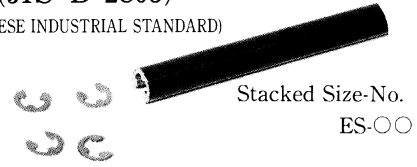
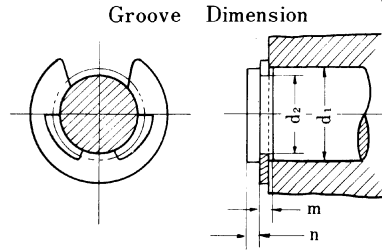
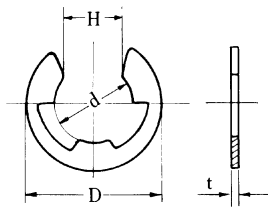


# E-Rings

(JIS B 2805)

(JAPANESE INDUSTRIAL STANDARD)



E-rings can be supplied in rail stacked or tape wrapped.  
 Size No.ES-0.6 through ES-1: Rail Stacked  
 Size No.ES-1.2 through ES-12: Tape wrapped

Unit : mm

Size-No.	Ring dimension								Groove dimension							
	d		D		H		t		d <sub>1</sub>		* d <sub>2</sub>		m		n	
	Basic.	Tol.	Basic	Tol.	Basic	Tol.	Basic	Tol.	Over	Under	Basic	Tol.	Basic	Tol.	Min.	
ETW- * 0.6	0.6	±0.02	1.5	±0.1	0.45	±0.02	0.2	±0.02	0.8	1	0.65	+0.05	0.3	+0.05	0.4	
* 0.7	0.67	0	2		0.55	-0.1	0.2		0.9	1.2	0.7	0	0.3	0	0.4	
	0.8	-0.08	2		0.7	0	0.2		1	1.4	0.82		0.3		0.4	
* 1	0.98	0	2.8		0.88	-0.25	0.2		1.3	1.7	1		0.3		0.5	
	1.2	-0.09	3		1		0.3	±0.025	1.4	2	1.23	+0.06	0.4		0.6	
	1.5		4	±0.2	1.3		0.4	±0.03	2	2.5	1.53	0	0.5		0.8	
* 1.9	1.9		4.5		1.7		0.4		2.5	3	1.93		0.5		1	
	2		5		1.7		0.4		2.5	3.2	2.05		0.5		1	
* 2.3	2.3		6		2		0.4		3	4	2.35		0.5		1	
	2.5		6		2.1		0.4		3.2	4	2.55		0.5		1	
	3		7		2.6		0.6	±0.04	4	5	3.05		0.7	+0.1	1	
* 3.2	3.2	0	7		2.8	0	0.6		4	5	3.25	+0.075	0.7	0	1.2	
	4	-0.12	9		3.5	-0.3	0.6		5	7	4.05	0	0.7		1.2	
	5		11		4.3		0.6		6	8	5.05		0.7		1.2	
	6		12		5.2		0.8		7	9	6.05		0.9		1.2	
	7	0	14		6.1	0	0.8		8	11	7.1	+0.09	0.9		1.5	
	8	-0.15	16		6.9	-0.35	0.8		9	12	8.1	0	0.9		1.8	
	9		18		7.8		0.8		10	14	9.1		0.9		2	
	10		20	±0.3	8.7		1	±0.05	11	15	10.15		1.15	+0.14	2	
	12	0	23		10.4	0	1		13	18	12.15	+0.11	1.15	0	2.5	
	15	-0.18	29		13	-0.45	1.5	±0.06	16	24	15.15	0	1.65		3	
	19	0	37		16.5		1.5		20	31	19.15	+0.13	1.65		3.5	
	24	-0.21	44		20.8	-0.5	2	±0.07	25	38	24.15	0	2.2		4	

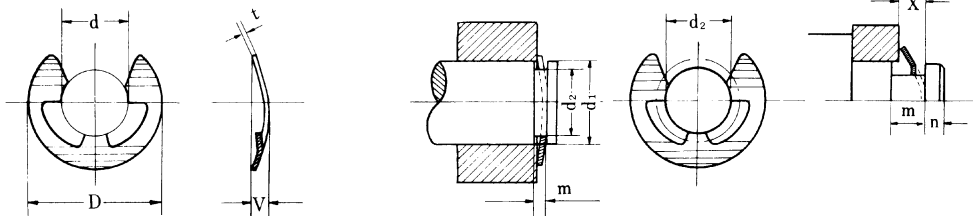
●Material=Carbon spring steel. Hardness=HRC44~52. Finish=Phosphate coating, Zinc plate plus Chromate.

●Material=Stainless spring steel.

Note: \* mark is not according to JIS specification. d<sub>2</sub> is according to our company's specification.

# Bowed E-Rings

Groove Dimension



Unit : mm

Size-No.	Ring dimension					Groove dimension									
	d	D	T	V		d <sub>1</sub>		d <sub>2</sub>		m		X		n	
				Basic	Tol.	Min.	Max.	Basic	Tol.	Basic	Tol.	Min.	Max.		
BETW-1.5	1.5	4	0.4	0.8	-0.15	2	2.5	1.53	+0.06	0.8	+0.1	0.55	0.65	0.8	
	2	5	0.4	0.8	-0.1	2.5	3.2	2.05	0	0.8	0	0.55	0.65	1	
	2.5	6	0.4	0.8		3.2	4	2.55		0.8		0.55	0.65	1	
	3	7	0.6	1.1	+0.25	4	5	3.05		1.1		0.85	1	1	
	4	9	0.6	1.1	0	5	7	4.05	+0.075	1.1		0.85	1	1.2	
	5	11	0.6	1.1		6	8	5.05	0	1.1		0.85	1	1.2	
	6	12	0.8	1.3	-0.4	7	9	6.05		1.3		1	1.2	1.2	
	7	14	0.8	1.3	0	8	11	7.1	+0.09	1.3		1	1.2	1.5	
	8	16	0.8	1.3		9	12	8.1	0	1.3		1	1.2	1.8	
	9	18	0.8	1.3		10	14	9.1		1.3		1	1.2	2	
	10	20	1	1.7		11	15	10.15		1.7		1.3	1.6	2	
	12	23	1	1.7		13	18	12.15	+0.11	1.7		1.3	1.6	2.5	
	15	29	1.5	2.3	+0.6	16	24	15.15	0	2.3		1.8	2.2	3	

●Material=Carbon spring steel. Hardness=HRC40~50. Finish=Phosphate coating, Zinc plate plus chromate.