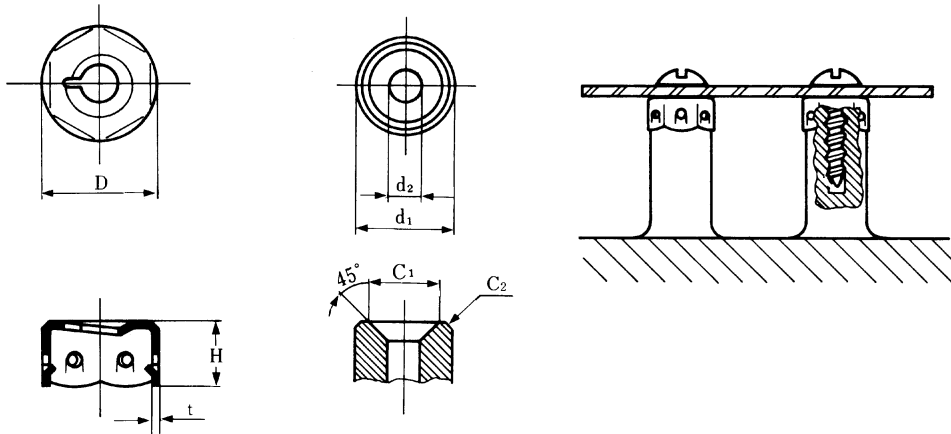


Top Nuts

Applicable stud

Installed



Unit : mm

Size-No.	Nut			Applicable screw see note 1			Applicable stud			
	D	H	t	Tapping screw Type 1	Tapping screw Type 2, 4	Tapping screw Type 3	d ₁	d ₂	C ₁ (Min.)	C ₂ (Min.)
OS-3001	7.3	6.2	0.4	M 3-24	M 3-24	—	6.3 ~ 6.4	2.55 ~ 2.65	4.6	0.8
4001	9.2	6.1	0.5	M 4-16	M 4-18	—	7.85 ~ 8	3.4 ~ 3.5	6.4	0.6
4002	10.7	6.3	0.5	M 4-16	M 4-18	—	9.45 ~ 9.6	3.4 ~ 3.5	7.4	0.8
4003	10.7	5.8	0.5	—	—	M 4 × 0.7	9.45 ~ 9.6	3.4 ~ 3.5	7.4	0.8
5001	10.7	5.8	0.5	M 5-12	M 5-16	—	9.45 ~ 9.6	4.5 ~ 4.6	7.4	0.8

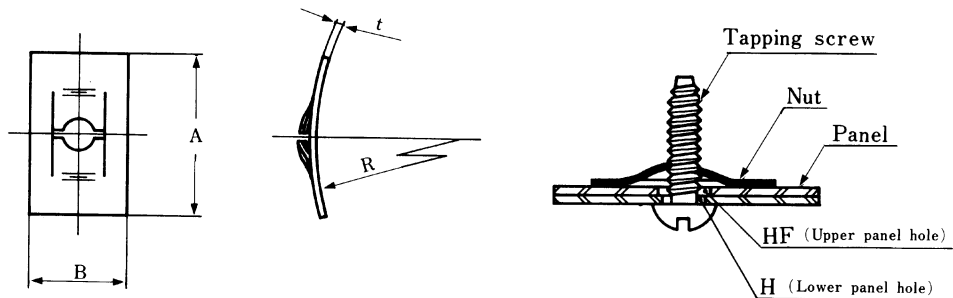
●Material=Carbon spring steel. Hardness=HRC 40~50. Finish=Zinc plate plus Chromate.

Note; 1. Applicable screw must be used tapping screw JIS B 1115.

2. Applicable stud material=High impact polystyrene (HIPS), Polycarbonate (PC), ABS, Polyacetal (POM).

F-Type Plate Nuts (Screw type)

Installed



Unit : mm

Size-No.	Applicable screw see note 1	Nut dimension				Panel size	
		A	B	R	t	H	HF
F S N - 3001	M 3 × 0.5	16	10	40	0.3	3.2	4
4001	M 4 × 0.7	20	13	50	0.4	4.3	5
5001	M 5 × 0.8	20	13	50	0.45	5.3	6
6001	M 6 × 1	20	13	50	0.5	6.4	7

●Material=Carbon spring steel. Hardness=HRC 40~50. Finish=Zinc plate plus Chromate.

Note; 1. Applicable screw must be used tapping screw JIS B 1115.

2. Enquire special types of nut when you need other size or type.