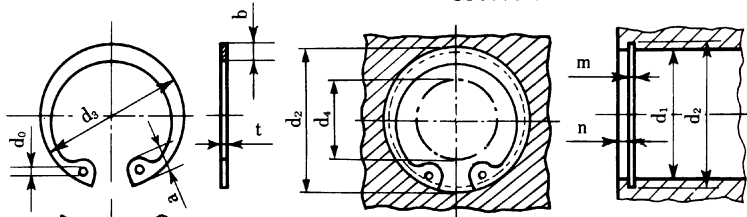


Retaining Rings (Internal)

JIS B 2804
(JAPANESE INDUSTRIAL STANDARD)
R-PACK



Above Size No.170

The dimension d_4 is the minimum diameter of inner periphery when the retaining ring is set in the hole.

d_4 : CLEARANCE DIAMETER



RTW-rings can be supplied in tape wrapped or banded.

Size No. 10 through 48 tape wrapped.

Size No. 50 through 125 tape wrapped or banded.

Unit : mm

Size-No.	Ring dimension								Ref. d_4	Groove dimension					
	d_3		t		b	a	d_0	d_1		d_2		m		Ref.n	
	Basic	Tol.	Basic	Tol.	Approx.	Approx.	Min.			Basic	Tol.	Basic	Tol.	Min.	
RTW-*	6	6.7	±0.18	0.4	±0.03	0.7	1.6	0.8	2.5	6	6.25	+0.04 0	0.5	+0.1 0	0.5
	*	7	7.7			0.8	1.7		3	7	7.3	+0.06 0			0.6
	*	8	8.8			0.9	1.7		3.5	8	8.4				
	*	9	9.8	0.6	±0.04	1.1	2.2		4	9	9.4		0.7		
	*	10	10.7	1	±0.05	1.5	2.8	1.2	3	10	10.4	+0.11 0	1.15	+0.14 0	1.5
	*	11	11.8			1.5	3		4	11	11.4				2
	*	12	13			1.7	3.1	1.5	5	12	12.5				
	*	13	14.1			1.7	3.1		6	13	13.6				
	*	14	15.1			1.9	3.6	1.7	7	14	14.6				
	*	15	16.2			1.9	3.6		8	15	15.7				
	*	16	17.3			1.9	3.7		8	16	16.8				
	*	17	18.3	±0.2		1.9	3.8		9	17	17.8				
	*	18	19.5			2.4	4		10	18	19	+0.21 0			
		19	20.5			2.5	4	2	11	19	20				
		20	21.5			2.5	4		12	20	21				
		21	22.5			2.5	4.1		12	21	22				
		22	23.5			2.5	4.1		13	22	23				
		24	25.9		1.2	±0.06	2.5	4.3	15	24	25.2		1.35		
		25	26.9			3	4.4		16	25	26.2				
		26	27.9			3	4.6		16	26	27.2				
		28	30.1	±0.25		3	4.6		18	28	29.4				
		30	32.1			3	4.7		20	30	31.4	+0.25 0			
		32	34.4			3.5	5.2	2.5	21	32	33.7				
		34	36.5		1.5	3.5	5.2		23	34	35.7		1.65		
		35	37.8			3.5	5.2		24	35	37				
		36	38.8			3.5	5.2		25	36	38				
		37	39.8			3.5	5.2		26	37	39				
		38	40.8			4	5.3		27	38	40				
	*	39	42	±0.4	1.75	±0.07	4	5.4	27	39	41.2		1.9		
	○	40	43.5			4	5.7		28	40	42.5				
	○	42	45.5			4	5.8		30	42	44.5				
	○	45	48.5			4.5	5.9		33	45	47.5				
	*	46	49.7	±0.45		5	5.7		33	46	48.5				
	○	47	50.5			4.5	6.1		34	47	49.5				
	○	48	51.5			4.5	6.2		35	48	50.5	+0.3 0			
		50	54.2		2	4.5	6.5		37	50	53		2.2		
		52	56.2			5.1	6.5		39	52	55				
		55	59.2			5.1	6.5		41	55	58				
		56	60.2			5.1	6.6		42	56	59				
		58	62.2			5.1	6.8		44	58	61				
		60	64.2			5.5	6.8		46	60	63				
		62	66.2			5.5	6.9		48	62	65				
		63	67.2			5.5	6.9		49	63	66				

Unit : mm

Size-No.	Ring dimension								Ref. d ₄	Groove dimension										
	d ₃		t		b	a	do	d ₁		d ₂		m		Ref.n						
	Basic	Tol.	Basic	Tol.	Approx.	Approx.	Min.			Basic	Tol.	Basic	Tol.	Min.						
R T W— 65	69.2	±0.45	2.5	±0.08	5.5	7	2.5	50	65	68	+0.3 0	2.7	+0.14 0	2.5						
68	72.5	±0.55	2.5	±0.08	6	7.4	2.5	53	68	71	+0.35 0	2.7	+0.14 0	2.5						
70	74.5				6	7.4		55	70	73										
72	76.5				6.6	7.4		57	72	75										
75	79.5				6.6	7.8		60	75	78										
78	82.5				6.6	8		62	78	81										
80	85.5				7	8		64	80	83.5										
82	87.5				7	8		66	82	85.5										
85	90.5				3	±0.09		7	8	69					85	88.5	3.2	+0.18 0	3	
88	93.5							7.6	8.2	71					88	91.5				
90	95.5							7.6	8.3	73					90	93.5				
92	97.5	8	8.3	74			92	95.5												
95	100.5	8	8.5	77			95	98.5												
98	103.5	8.3	8.7	80			98	101.5												
100	105.5	8.3	8.8	82			100	103.5												
102	108	4	±0.09	8.9			9	83	102	106	+0.54 0	4.2	4							
105	112			8.9			9.1	86	105	109										
108	115			8.9			9.5	87	108	112										
110	117			8.9	10.2	89	110	114												
112	119			8.9	10.2	90	112	116												
115	122			±0.65	±0.09	9.5	10.2	94	115	119				+0.63 0	4.2	4				
120	127					9.5	10.7	98	120	124										
125	132					10	10.7	103	125	129										
130	137					+1.26 -0.63	±0.09	10	10.7	108							130	134	+0.2 0	6
135	142							10.8	11	113							135	139		
140	147	10.8	11					118	140	144										
145	152	10.8	11					123	145	149										
150	158	11.5	11.8					126	150	155										
155	164	11.5	11.8					130	155	160										
160	169	12	12.5					134	160	165										
165	174.5	12	12.7	139	165			170												
170	179.5	12	—	145	170			175												
175	184.5	+1.44 -0.72	±0.09	12.5	—			149	175	180	+0.72 0	5.2	+0.25 0							
180	189.5			13	—	153	180	185												
185	194.5			13.5	—	157	185	190												
190	199.5			13.5	—	162	190	195												
195	204.5			13.5	—	167	195	200												
200	209.5			14	—	171	200	205												
210	222			+1.62 -0.81	5	±0.15	14	—	181	210				216	+0.81 0	9				
220	232						14	—	191	220				226						
230	242						14	—	201	230				236						
240	252						14	—	211	240				246						
250	262	14	—				221	250	256											
260	275	16	—				227	260	268											
270	285	16	—				237	270	278											
280	295	16	—				247	280	288											
290	305	16	—				257	290	298											
300	315	16	—				267	300	308											

●Material=Carbon spring steel. Hardness=HRC44~52. Finish=Phosphate coating, Zinc plate plus Chromate.

●Material=Stainless spring steel.

Note; ※mark and size No.130 above are according to our company's specification.

○mark is old JIS.