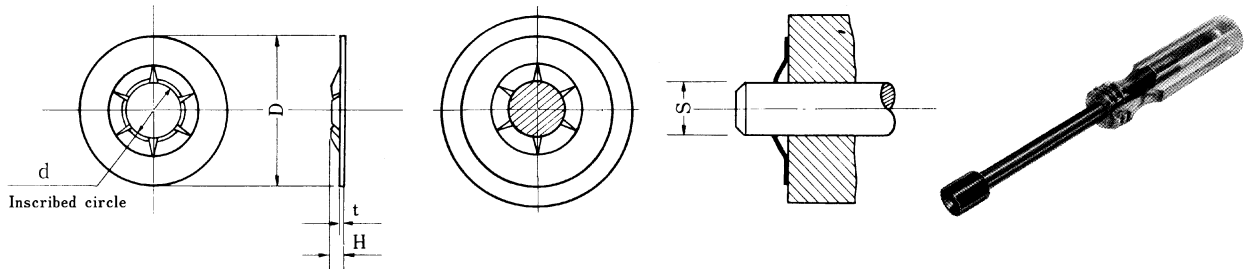


Self-locking External Nuts

Installed

Applicator



Unit : mm

Size-No.	Ring dimension					Applicable shaft		Thrust Load kN
	d		D	H	t	S		
	Basic	Tol.				Basic	Tol.	
S P N - 1.2	1.1	0	4.5	0.6	0.25	1.2	+0.04	0.2
1.5	1.4	-0.1	5.2	0.6	0.25	1.5	-0.03	0.2
2	1.9		6	0.7	0.25	2		0.2
2.4	2.3	0	7	0.8	0.25	2.4		0.45
2.6	2.5	-0.15	7	0.9	0.25	2.6		0.45
3	2.9		10	1.3	0.3	3	+0.05	0.98
4	3.9		12	1.4	0.3	4	-0.03	0.98
5	4.9		14	1.55	0.4	5		1.47
6	5.9		16	1.75	0.4	6	+0.06	1.67
8	7.9		17.5	1.8	0.5	8	-0.03	1.77
10	9.9		21	2.2	0.7	10	+0.07	3.14
12	11.9		27	2.8	0.9	12	-0.03	3.93

●Material=Carbon spring steel. Hardness=HRC40~50. Finish=Phosphate coating.

●Material=Stainless spring steel ; SUS304, precipitation hardening stainless steels.

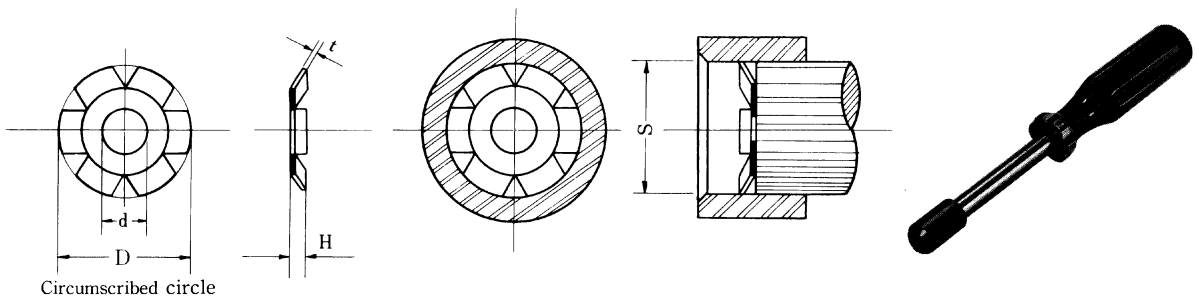
Note; 1. The data of thrust load shows the value when the nut is tested by the shaft made of cold rolled steel.

2. This ring can not use of hardened shaft.

Self-locking Internal Nuts

Installed

Applicator



Unit : mm

Size-No.	Ring dimension					Applicable bore		Thrust Load kN
	D		d	H	t	S		
	Basic	Tol.				Basic	Tol.	
R P N - 6	6.2	±0.1	1	1	0.3	6	+0.03	0.4
8	8.2		1.8	1.2	0.3	8	-0.06	0.49
10	10.2		3	1.4	0.4	10	+0.03 -0.07	0.79

●Material=Carbon Spring Steel. Hardness=HRC40~50. Finish=Phosphate coating

Note; 1. The data of thrust load shows the value when the nut is tested by the bore made of cold rolled steel.

2. This ring can not use of hardened bore.