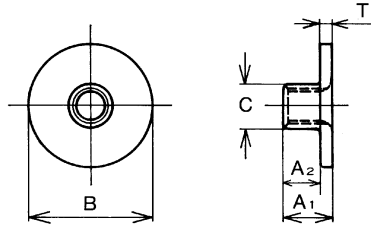


SPOT WELDED T-NUTS -Round Base Plain



Inch Thread Series

Part Number	Thread Size	A ₂ Barrel Height	B	C	T	Weight 1M Pieces Lbs.
TN-03501	#6-32	1/4	.56	.156	.024	2.2
TN-04201	#8-32	1/4	.59	.219	.047	4.6
TN-04801	#10-24	5/16	.71	.234	.039	5.7
TN-04807	#10-32	5/16	.71	.234	.039	5.7
TN-04812	#10-24	7/16	.71	.250	.039	6.2
TN-04813	#10-32	7/16	.71	.250	.039	6.2
TN-06301	1/4-20	5/16	.75	.297	.047	7.5
TN-06306	1/4-20	7/16	.75	.297	.047	8.6
TN-06317	1/4-20	1/2	.75	.297	.047	9.3
TN-06311	1/4-20	9/16	.75	.297	.047	9.7
TN-07901	5/16-18	3/8	.88	.375	.055	12.7
TN-07912	5/16-18	1/2	.88	.375	.055	13.7
TN-07906	5/16-18	5/8	.88	.375	.055	16
TN-09501	3/8-16	7/16	1.00	.453	.071	22

Metric Thread Series

Part Number	Thread Size	A ₁ Total Height	B	C	T	Weight 1M Pieces kgf
TN-04001	M4 x 0.7	8	15	5.6	1.2	2.1
TN-05015	M5 x 0.8	6	18	6.5	1.2	2.5
TN-05001	M5 x 0.8	9	18	6.5	1.2	3.1
TN-06014	M6 x 1	4.9	17.2	7.4	1.2	2.4
TN-06001	M6 x 1	9	19	7.6	1.2	3.4
TN-08001	M8 x 1.25	11	22.2	9.9	1.6	6.6
TN-08011	M8 x 1.25	17.5	22.2	9.9	1.6	8.3
TN-10001	M10 x 1.5	13	25.5	11.6	1.8	10