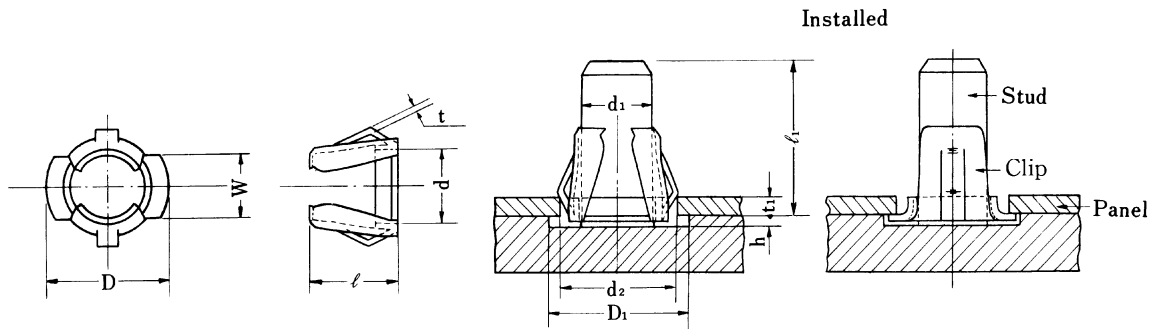


## Tubular Clips



Unit : mm

Size-No.	D		d		l		t	W	
	Basic	Tol.	Basic	Tol.	Basic	Tol.		Basic	Tol.
T S N - 3	5.5	+0.2 -0.1	3.2	+0.2 -0.05	4	±0.5	0.3	3	±0.3
	6.5		4.2		5		0.3	3.5	

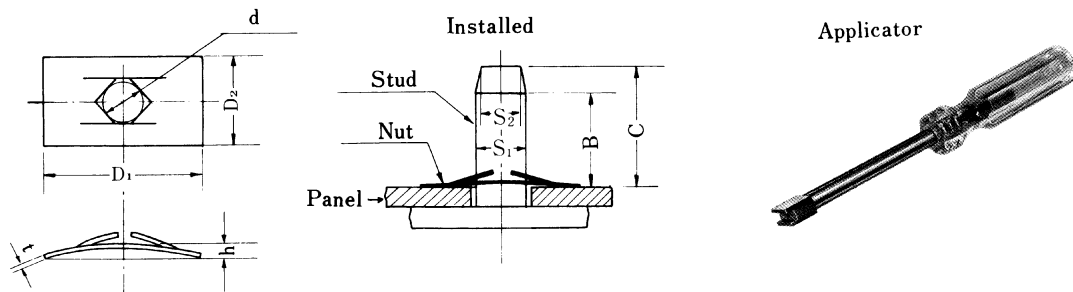
●Material=Carbon Spring Steel. Hardness=HRC40~50. Finish=Phosphate coating.

## Stud and Panel

Unit. mm

Size No.	D <sub>1</sub>	d <sub>1</sub>		l <sub>1</sub>	h	d <sub>2</sub>		t <sub>1</sub>	
	Min.	Basic	Tol.	Min.	Min.	Basic	Tol.	Basic	Tol.
T S N - 3	6	3	+0.1 0	6	0.5	4.5	+0.1 0	0.8	+0.1 -0.2
	7	4		7	0.5	5.5	0 -0.1	0.8	

## P-Type Push-on Nuts



Unit : mm

Size-No.	Nut								Stud diameter					Thrust Load kN		
	d		D <sub>1</sub>	D <sub>2</sub>	Gen. Tol.	h		t	S <sub>1</sub>		S <sub>2</sub>	B	C			
	Basic	Tol.				Basic	Tol.		Basic	Tol.						
P S N -	1.2	1.1	±0.1	12	6	±0.15	0.95	±0.25	0.3	1.3	±0.05	1	4.5	6	0.12	
	1.5	1.38		12	6		0.95		0.3	1.57		1.2	4.5	6	0.12	
	1.8	1.68		12	6		1.05		0.4	1.87		1.5	4.5	6	0.20	
	2	1.85		12	6		1		0.4	2.07		1.6	4.5	6	0.23	
	3	2.8	+0.2		14	8	±0.25	1.2		0.4	3.1		2.6	6	8	0.28
	4	3.8	-0.1		16	9		1.5		0.4	4.1		3.6	6	8	0.28
	5	4.8			18	11		1.6		0.4	5.1		4.6	6	8	0.49
	6	5.8			20	12		1.7		0.4	6.1		5.6	6	10	0.49
8	7.8			23	15		2.2		0.5	8.1		7.6	8	10	0.49	

●Material=Carbon spring steel. Hardness HRC40~50. Finish=Zinc plate plus Chromate.

- Note; 1. The data of thrust load shows the value when the nut is tested by the stud made of cold rolled steel.  
2. This nut can not use of hardened stud.