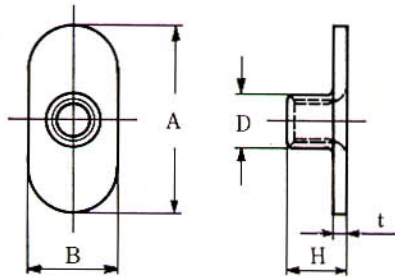
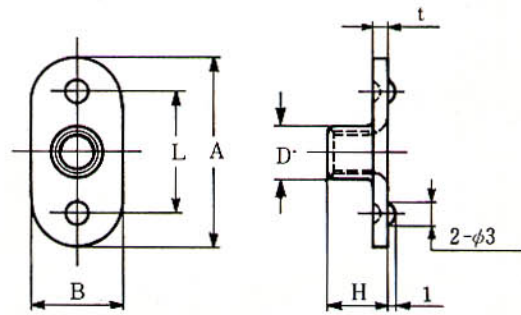


# Weld Nuts

F (Nonboss type)



B (Boss type)



Unit : mm

Size-No.	Applicable screw	A	B	H	D	t	R	L
W-4-F	M 4 × 0.7	23	12	6	5.5	1.2	6	—
W-4-B	M 4 × 0.7	23	12	6	5.5	1.2	6	14
W-5-F	M 5 × 0.8	24	12	7	6.2	1.2	6	—
W-5-B	M 5 × 0.8	24	12	7	6.2	1.2	6	16
W-6-F	M 6 × 1	26	14	8	7.8	1.6	7	—
W-6-B	M 6 × 1	26	14	8	7.8	1.6	7	17
W-8-F	M 8 × 1.25	28	14	10	9.6	1.8	7	—
W-8-B	M 8 × 1.25	28	14	10	9.6	1.8	7	20

● Material = JIS G 3141 SPCC (AISI C1010)      Finish = Plain or Zn Plating

Note: Welding bosses may be located on the opposite side, please inquire.