



Belt Drive Products

Metric Sheaves & Timing Pulleys

Metric V-Belt TL SP Sheaves

PTI offers a full line of these widely used Metric V-Belt Sheaves from stock. These European standard sheaves, (commonly known as V-pulleys in Europe) utilize standard TL Tapered Bushing for mounting. The TL Bushing is available in both inch and metric shaft sizes. The SPZ, SPA, SPB and SPC Sheaves relate to the 4 different belt sections (i.e. Z, A, B and C) which is the standard European metric V-belt drive. The standard sheave will accommodate both standard or cogged belts. These friction drive sheaves are stocked up to 1250mm pitch diameter and thru 6 or 8 grooves on most sizes. 10 grooves and more are a normal MTO request. Bored to size and pilot bore sheaves are also available on request. These sheaves are versatile, smooth running and transfer significant power very economically.



TL Tapered bushings are the preferred mounting method for all Metric Drive products, especially on equipment from Europe. PTI stocks both inch and metric bores.

TL Tapered Bushings

TL Tapered bushings are the preferred mounting method for all Metric Drive products, especially on equipment from Europe. PTI stocks both inch and metric bores.



Super Torque TL Timing Pulleys

The Super Torque profile is a metric, rounded shaped standard tooth form in 8mm or 14mm pitch sizes and respective belt widths up to 170mm. These pulleys mount to the shaft using the TL Tapered Bushing. They are suitable for high precision, smooth and quiet operation and have a resistance to abrasion. The length stability of polyurethane belts combine to provide a long service life and maintenance free operation.



Metric Variable Pitch TL Pulleys

Available in single and double grooves, these variable pitch friction drive pulleys have adjustable pitch diameters that allow for speed adjustment of the driven shaft. Available in Z, A and B belt sections, all mount with the standard TL Tapered Bushings. The pitch diameter is easily adjusted by turning the external face of the pulley by



1/4 turn increments until the desired speed of the driven shaft is achieved.

XL, L & H Synchronous TL Timing Pulleys

Synchronous Pulleys are a very popular, economical trapezoidal profile timing belt drive, and often replace chain drives. These light weight pulleys are ideal for timed or positioning applications. They are low backlash drivers that transmit a constant linear velocity very efficiently (~98%). They are available in 3 pitch sizes: XL (1/5" pitch), L (3/8" pitch) & H (1/2" pitch) and stocked in a variety of standard belt widths up to 3 inches. The smallest XL sizes are available in aluminum and can be bored to size. The L and H sizes are available with inch and metric bores.



HTD TL Timing Pulleys

HTD (High Torque Drives) is a positive belt drive and significantly more efficient than traditional Chain or V-Belt drives. The curvilinear shaped tooth is designed to improve torque capacity over traditional Timing and V-belt systems. HTD pulleys utilize metric dimensions and nomenclature. Sizes and designs are standard around the globe. Pulleys are available in tooth pitches of 5mm, 8mm and 14mm and stocked in several standard widths for the popular HTD belts. Wider belts handle increased torque. All stock pulleys are for the global standard TL Tapered Bushing. TL Bushings are available from stock for inch or metric bores. Mounting the HTD TL pulley requires only an Allen wrench and the installed result is a concentric grip on the shaft for vibration free operation. The resulting tight concentric fit to the shaft accommodates high speeds and high torque while eliminating shaft fretting which generally occurs with bored to size pulleys. In addition, these synchronous pulleys are ideal for positioning drives. HTD is a registered trademark of Gates Corporation.



T-Series & AT-Series Metric Timing Pulleys

These light weight aluminum, positive drive timing pulleys are suitable for moderate power/torque transmission and have reduced rotational inertia. The non-corrosive aluminum provides moderate chemical and corrosion resistance. Ideal for timed applications or for drives in clean environments. They are stocked with pilot bores and can be provided bored to size or with custom bores with face mounting holes. Polyurethane and Neoprene belts, typically steel reinforced, virtually eliminate belt stretch and offer long maintenance free operation. The T profile is a trapezoidal tooth form available in 3 popular sizes: 2.5, 5 and 10 mm. The AT tooth form is a curvilinear tooth available in 5 or 10mm pitch.



Custom Pulleys

Metric pitch timing bars, duplex pulley combinations and custom bores are all possible. Provide a drawing or your technical requirements to our sales department. We will be happy to provide you with options or parts to your specifications.



Synchronous Pulleys - Pilot Bore, Bushed



XL - Series - 1/5" Pitch x 3/8" Belt Width

Part No: 20XL037N

- 20 = No. of Teeth
- XL = Pitch (XL = 1/5", L = 3/8", H = 1/2")
- 037 = Width of Belt (.375")
- N = Pilot Bore

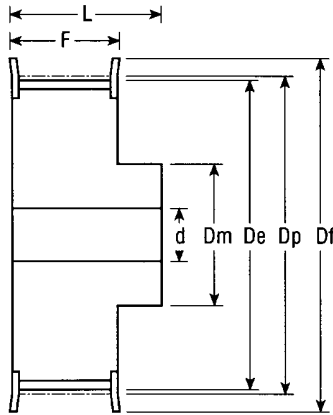


Fig 6F

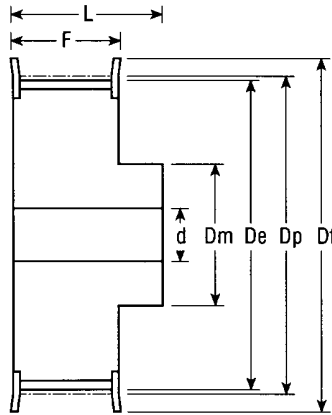


Fig 6

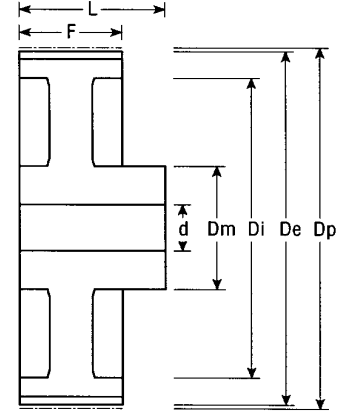


Fig 6W

Dimensions in inches

Part No.	Teeth	Belt Width	Material	Figure	Dp	De	Df	Dm	F	L	Pilot Bore	Max Bore	Wt. kg
10XL037N	10	0.375	ST	6F	0.637	0.62	0.91	0.37	0.56	0.78	0.20	0.25	0.02
11XL037N	11	0.375	ST	6F	0.700	0.68	0.91	0.37	0.56	0.78	0.20	0.25	0.02
12XL037N	12	0.375	ST	6F	0.764	0.74	0.98	0.50	0.56	0.78	0.20	0.32	0.03
14XL037N	14	0.375	ST	6F	0.891	0.87	1.10	0.56	0.56	0.78	0.24	0.37	0.04
15XL037N	15	0.375	ST	6F	0.955	0.94	1.10	0.63	0.56	0.78	0.24	0.44	0.04
16XL037N	16	0.375	ST	6F	1.019	1.00	1.26	0.69	0.56	0.78	0.24	0.50	0.05
18XL037N	18	0.375	ST	6F	1.146	1.13	1.42	0.81	0.56	0.78	0.24	0.56	0.06
20XL037N	20	0.375	ST	6F	1.273	1.25	1.50	0.94	0.56	0.87	0.24	0.69	0.08
21XL037N	21	0.375	ST	6F	1.337	1.32	1.50	0.94	0.56	0.87	0.24	0.69	0.09
22XL037N	22	0.375	ST	6F	1.400	1.38	1.65	1.00	0.56	0.87	0.24	0.75	0.10
24XL037N	24	0.375	ST	6F	1.528	1.51	1.73	1.06	0.56	0.87	0.24	0.81	0.10
26XL037N	26	0.375	ST	6F	1.655	1.64	1.89	1.18	0.56	0.87	0.24	0.91	0.10
28XL037N	28	0.375	ST	6F	1.783	1.76	2.01	1.19	0.56	0.87	0.24	0.91	0.20
30XL037N	30	0.375	ST	6F	1.910	1.89	2.13	1.37	0.56	0.87	0.24	0.91	0.20
32XL037N	32	0.375	AL	6	2.037	2.02	—	1.50	0.56	1.00	0.31	0.91	0.10
36XL037N	36	0.375	AL	6	2.292	2.27	—	1.50	0.56	1.00	0.31	0.91	0.10
40XL037N	40	0.375	AL	6	2.546	2.53	—	1.50	0.56	1.00	0.31	0.91	0.20
42XL037N	42	0.375	AL	6W	2.674	2.65	—	1.50	0.56	1.00	0.31	0.91	0.10
44XL037N	44	0.375	AL	6W	2.801	2.78	—	1.50	0.56	1.00	0.31	0.91	0.20
48XL037N	48	0.375	AL	6W	3.056	3.04	—	1.50	0.56	1.00	0.31	0.91	0.20
60XL037N	60	0.375	AL	6W	3.820	3.80	—	1.50	0.56	1.00	0.31	0.91	0.20
72XL037N	72	0.375	AL	6W	4.584	4.56	—	1.50	0.56	1.00	0.31	0.91	0.20

Note: ST = Steel, AL = Aluminum.

Synchronous Pulleys - Pilot Bore, Bushed



L - Series - 3/8" Pitch x 1/2", 3/4" and 1" Belt Widths

Part No: 20L075T

20 = No. of Teeth

L = Pitch (XL = 1/5", L = 3/8", H = 1/2")

075 = Width of Belt (3/4")

T = Taper Bore, N = Pilot Bore

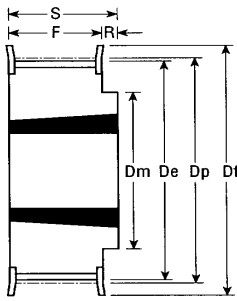


Fig 8F

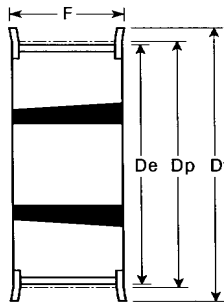


Fig 3F

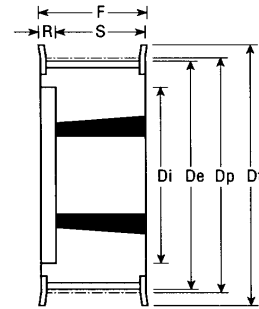


Fig 5F

Dimensions in inches

Part No.	Bushing	Teeth	Belt Width	Material	Figure	Dp	De	Df	Dm	Di	F	R	S	Wt. kg
18L050T	1108	18	0.50	ST	8F	2.149	2.12	2.36	1.69	—	0.75	0.12	0.87	0.2
18L075T	1108		0.75	ST	3F	2.149	2.12	2.36	—	—	0.98	—	0.98	0.2
18L100T	1108		1.00	ST	5F	2.149	2.12	2.36	—	1.50	1.22	0.35	0.87	0.2
19L050T	1108	19	0.50	ST	8F	2.268	2.24	2.36	1.69	—	0.75	0.12	0.87	0.2
19L075T	1108		0.75	ST	3F	2.268	2.24	2.36	—	—	0.98	—	0.48	0.3
19L100T	1108		1.00	ST	5F	2.268	2.24	2.36	—	1.50	1.22	0.35	0.87	0.3
20L050T	1108	20	0.50	ST	8F	2.387	2.36	2.60	1.89	—	0.75	0.12	0.87	0.2
20L075T	1108		0.75	ST	3F	2.387	2.36	2.60	—	—	0.98	—	0.98	0.3
20L100T	1108		1.00	ST	5F	2.387	2.36	2.60	—	1.77	1.22	0.35	0.87	0.4
21L050T	1108	21	0.50	ST	8F	2.507	2.48	2.80	1.89	—	0.75	0.12	0.87	0.3
21L075T	1108		0.75	ST	3F	2.507	2.48	2.80	—	—	0.98	—	0.98	0.4
21L100T	1108		1.00	ST	5F	2.507	2.48	2.80	—	1.85	1.22	0.35	0.87	0.4
22L050T	1108	22	0.50	ST	8F	2.626	2.60	2.95	2.01	—	0.75	0.12	0.87	0.3
22L075T	1108		0.75	ST	3F	2.626	2.60	2.95	—	—	0.98	—	0.98	0.4
22L100T	1108		1.00	ST	5F	2.626	2.60	2.95	—	2.01	1.22	0.35	0.87	0.4
23L050T	1108	23	0.50	GG	8F	2.745	2.72	3.11	2.13	—	0.75	0.12	0.87	0.4
23L075T	1108		0.75	GG	3F	2.745	2.72	3.11	—	—	0.98	—	0.98	0.4
23L100T	1108		1.00	GG	5F	2.745	2.72	3.11	—	2.13	1.26	0.39	0.87	0.5
24L050T	1108	24	0.50	GG	8F	2.865	2.83	3.11	2.13	—	0.75	0.12	0.87	0.4
24L075T	1108		0.75	GG	3F	2.865	2.83	3.11	—	—	0.98	—	0.98	0.5
24L100T	1108		1.00	GG	5F	2.865	2.83	3.11	—	2.13	1.26	0.39	0.87	0.6
25L050T	1108	25	0.50	GG	8F	2.984	2.95	3.27	2.20	—	0.75	0.12	0.87	0.5
25L075T	1108		0.75	GG	3F	2.984	2.95	3.27	—	—	0.98	—	0.98	0.6
25L100T	1108		1.00	GG	5F	2.984	2.95	3.27	—	2.20	1.26	0.39	0.87	0.6
26L050T	1108	26	0.50	GG	8F	3.104	3.07	3.43	2.36	—	0.75	0.12	0.87	0.5
26L075T	1108		0.75	GG	3F	3.104	3.07	3.43	—	—	0.98	—	0.98	0.6
26L100T	1108		1.00	GG	5F	3.104	3.07	3.43	—	2.36	1.26	0.39	0.87	0.7
27L050T	1108	27	0.50	GG	8F	3.223	3.19	3.43	2.56	—	0.75	0.12	0.87	0.6
27L075T	1108		0.75	GG	3F	3.223	3.19	3.43	—	—	0.98	—	0.98	0.7
27L100T	1108		1.00	GG	5F	3.223	3.19	3.43	—	2.44	1.26	0.39	0.87	0.8

Note: ST = Steel, GG = Cast Iron. Pilot Bore available on request.

Synchronous Pulleys - Taper Bushed



L - Series - 3/8" Pitch x 1/2", 3/4" and 1" Belt Widths

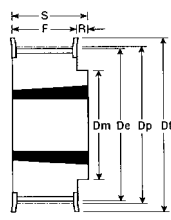


Fig 8F

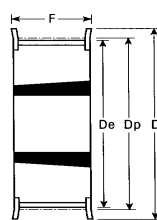


Fig 3F

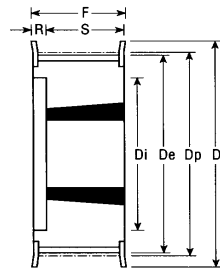


Fig 5F

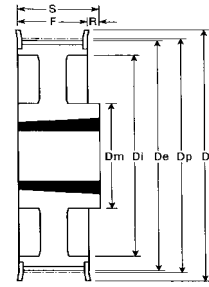


Fig 8WF

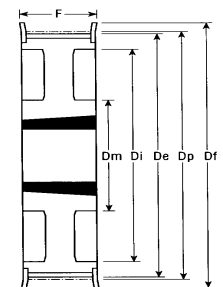


Fig 3WF

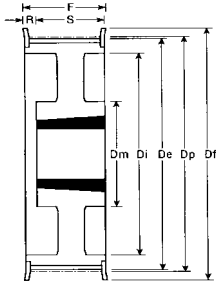


Fig 5WF

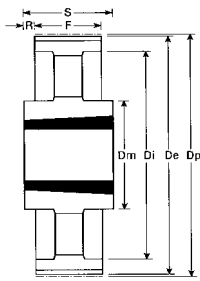


Fig 7A

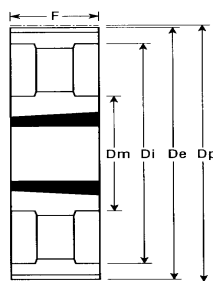


Fig 3A

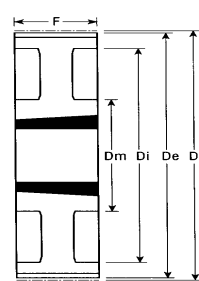


Fig 3W

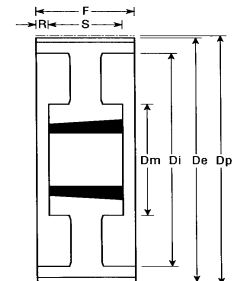


Fig 9W

Dimensions in inches

Part No.	Bushing	Teeth	Belt Width	Material	Figure	Dp	De	Df	Dm	Di	F	S	R	Wt. kg
28L050T	1108	28	0.5	GG	8F	3.342	3.31	3.58	2.56	—	0.75	0.87	0.12	0.6
28L075T	1108		0.75	GG	3F	3.342	3.31	3.58	—	—	0.98	0.98	—	0.7
28L100T	1108		1.0	GG	5F	3.342	3.31	3.58	—	2.56	1.26	0.87	0.39	0.8
30L050T	1108	30	0.5	GG	8F	3.581	3.55	3.82	2.76	—	0.75	0.87	0.12	0.8
30L075T	1108		0.75	GG	3F	3.581	3.55	3.82	—	—	0.98	0.98	—	0.9
30L100T	1210		1.0	GG	5F	3.581	3.55	3.82	—	2.80	1.26	0.98	0.28	0.9
32L050T	1108	32	0.5	GG	8F	3.820	3.79	4.06	2.91	—	0.75	0.87	0.12	0.9
32L075T	1108		0.75	GG	3F	3.820	3.79	4.06	—	—	0.98	0.98	—	1.0
32L100T	1210		1.0	GG	5F	3.820	3.79	4.06	—	2.95	1.26	0.98	0.28	1.0
36L050T	1108	36	0.5	GG	8F	4.297	4.27	4.53	3.43	—	0.75	0.87	0.12	1.2
36L075T	1610		0.75	GG	3F	4.297	4.27	4.53	—	—	0.98	0.98	—	1.2
36L100T	1610		1.0	GG	5F	4.297	4.27	4.53	—	3.50	1.26	0.98	0.28	1.4
40L050T	1610	40	0.5	GG	8F	4.775	4.74	5.00	3.82	—	0.75	0.98	0.24	1.5
40L075T	1610		0.75	GG	3F	4.775	4.74	5.00	—	—	0.98	0.98	—	1.7
40L100T	1610		1.0	GG	5F	4.775	4.74	5.00	—	3.98	1.26	0.98	0.28	1.7
48L050T	1610	48	0.5	GG	8WF	5.730	5.70	5.98	3.46	4.88	0.75	0.98	0.24	2.3
48L075T	1610		0.75	GG	3WF	5.730	5.70	5.98	3.62	4.88	0.98	0.98	—	2.5
48L100T	1610		1.0	GG	5WF	5.730	5.70	5.98	3.62	4.88	1.26	0.98	0.28	2.7
60L050T	1610	60	0.5	GG	7A	7.162	7.13	—	3.62	6.54	0.75	0.98	0.12	2.0
60L075T	1610		0.75	GG	3W	7.162	7.13	—	3.62	6.54	0.98	0.98	—	3.0
60L100T	1610		1.0	GG	9W	7.162	7.13	—	3.62	6.54	1.26	0.98	0.14	2.4
72L050T	1610	72	0.5	GG	7A	8.594	8.56	—	3.62	7.95	0.75	0.98	0.12	3.0
72L075T	1610		0.75	GG	3A	8.594	8.56	—	3.62	7.95	0.98	0.98	—	4.0
72L100T	2012		1.0	GG	3A	8.594	8.56	—	4.17	7.95	1.26	1.26	—	4.4
84L050T	1610	84	0.5	GG	7A	10.027	10.00	—	3.62	9.29	0.75	0.98	0.12	4.0
84L075T	2012		0.75	GG	7A	10.027	10.00	—	4.17	9.29	0.98	1.26	0.14	5.2
84L100T	2012		1.0	GG	3A	10.027	10.00	—	4.17	9.29	1.26	1.26	—	6.0
96L050T	2012	96	0.5	GG	7A	11.459	11.43	—	4.17	10.63	0.75	1.26	0.26	5.5
96L075T	2012		0.75	GG	7A	11.459	11.43	—	4.17	10.63	0.98	1.26	0.14	6.5
96L100T	2012		1.0	GG	3A	11.459	11.43	—	4.17	10.63	1.26	1.26	—	7.1
120L050T	2012	120	0.5	GG	7A	14.324	14.29	—	4.17	13.50	0.75	1.26	0.26	6.8
120L075T	2012		0.75	GG	7A	14.324	14.29	—	4.17	13.50	0.98	1.26	0.14	7.6
120L100T	2012		1.0	GG	3A	14.324	14.29	—	4.17	13.50	1.26	1.26	—	8.5

Note: Minimum plain bore available on request. GG = Cast Iron.

Synchronous Pulleys - Taper Bushed



H - Series - 1/2" Pitch x 1", 1 1/2", 2" and 3" Belt Widths

Part No: 20H100T-1210

- 20 = No. of Teeth
- H = Pitch (XL = 1/5", L = 3/8", H = 1/2")
- 100 = Width of Belt (Inches)
- T = Taper Bore, N = Pilot Bore
- 1210 = Bushing Size

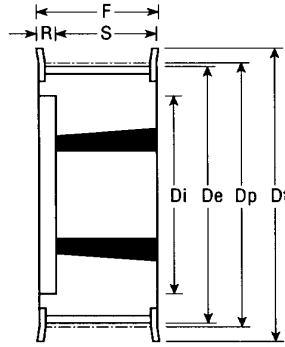


Fig 5F

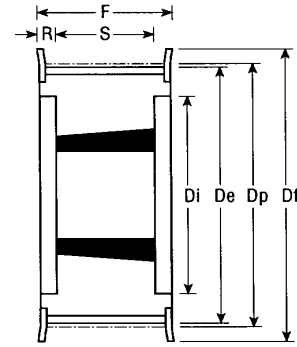


Fig 4F

Dimensions in inches

Part No.	Bushing	Teeth	Belt Width	Material	Figure	Dp	De	Df	Dm	Di	F	S	R	Wt. kg
16H100T	1108	16	1.0	ST	5F	2.546	2.49	2.80	—	1.77	1.22	0.87	0.35	0.4
18H100T	1210	18	1.0	ST	5F	2.865	2.81	3.11	—	2.05	1.22	0.98	0.24	0.5
18H150T	1210		1.5	ST	5F	2.865	2.81	3.11	—	2.09	1.77	0.98	0.79	0.6
18H200T	1210		2.0	ST	5F	2.865	2.81	3.11	—	2.05	2.28	0.98	1.30	0.8
19H100T	1210	19	1.0	ST	5F	3.024	2.97	3.27	—	2.20	1.22	0.98	0.24	0.6
19H150T	1210		1.5	ST	5F	3.024	2.97	3.27	—	2.20	1.77	0.98	0.79	0.7
19H200T	1610		2.0	ST	5F	3.024	2.97	3.27	—	2.20	2.28	0.98	1.30	0.9
20H100T	1210	20	1.0	ST	5F	3.183	3.13	3.43	—	2.36	1.22	0.98	0.24	0.7
20H150T	1210		1.5	ST	5F	3.183	3.13	3.43	—	2.36	1.77	0.98	0.79	0.8
20H200T	1610		2.0	ST	5F	3.183	3.13	3.43	—	2.36	2.28	.98	1.30	1.0
20H300T	1615		3.0	ST	4F	3.183	3.13	3.43	—	2.56	3.31	1.50	0.91	1.5
21H100T	1210	21	1.0	GG	5F	3.342	3.29	3.58	—	2.48	1.26	0.98	0.28	0.8
21H150T	1210		1.5	GG	5F	3.342	3.29	3.58	—	2.52	1.77	0.98	0.74	1.0
21H200T	1610		2.0	GG	5F	3.342	3.29	3.58	—	2.52	2.28	0.98	1.30	1.7
21H 300T	1615		3.0	GG	4F	3.342	3.29	3.58	—	2.60	3.31	1.50	0.91	1.2
22H100T	1210	22	1.0	GG	5F	3.501	3.45	3.66	—	2.64	1.26	0.98	0.28	0.9
22H150T	1210		1.5	GG	5F	3.501	3.45	3.66	—	2.68	1.77	0.98	0.79	1.2
22H200T	1610		2.0	GG	5F	3.501	3.45	3.66	—	2.68	2.28	0.98	1.30	1.5
22H300T	1615		3.0	GG	4F	3.501	3.45	3.66	—	2.64	3.31	1.50	0.91	1.6
23H100T	1610	23	1.0	GG	5F	3.661	3.61	3.82	—	2.80	1.26	0.98	0.28	0.9
23H150T	1610		1.5	GG	5F	3.661	3.61	3.82	—	2.80	1.77	0.98	0.79	1.3
23H200T	1610		2.0	GG	5F	3.661	3.61	3.82	—	2.80	2.28	0.98	1.30	1.8
23H300T	1615		3.0	GG	4F	3.661	3.61	3.82	—	2.80	3.31	1.50	0.91	1.8
24H100T	1610	24	1.0	GG	5F	3.820	3.77	4.06	—	2.95	1.26	0.98	0.28	1.0
24H150T	1610		1.5	GG	5F	3.820	3.77	4.06	—	2.91	1.77	0.98	0.79	1.0
24H200T	1610		2.0	GG	5F	3.820	3.77	4.06	—	2.91	2.28	0.98	1.30	1.5
24H300T	1615		3.0	GG	4F	3.820	3.77	4.06	—	2.95	3.31	1.50	0.91	2.1

Note: ST = Steel, GG = Cast Iron. Pilot Bore available on request.

Synchronous Pulleys - Taper Bushed



H - Series - 1/2" Pitch x 1", 1 1/2", 2" and 3" Belt Widths

Part No: 28H 100T-1610

28 = No. of Teeth

H = Pitch (XL = 1/5", L = 3/8", H = 1/2")

100 = Width of Belt (Inches)

N = Pilot Bore, T = Taper Bore

1610 = Bushing Size

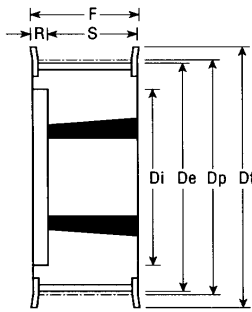


Fig 5F

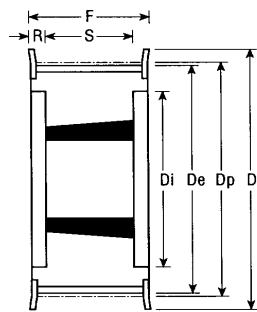


Fig 4F

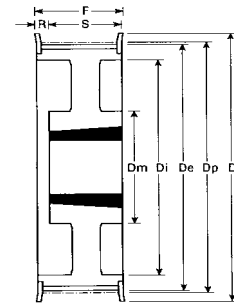


Fig 5WF

Dimensions in inches

Part No.	Bushing	Teeth	Belt Width	Material	Figure	Dp	De	Df	Dm	Di	F	S	R	Wt. kg
25H100T	1610	25	1.0	GG	5F	3.979	3.92	4.17	—	3.11	1.26	0.98	0.28	1.0
25H150T	1610		1.5	GG	5F	3.979	3.92	4.17	—	3.07	1.77	0.98	0.79	1.2
25H200T	1610		2.0	GG	5F	3.979	3.92	4.17	—	3.07	2.28	0.98	1.30	1.5
25H300T	1615		3.0	GG	4F	3.979	3.92	4.17	—	3.11	3.31	1.50	0.91	2.0
26H100T	1610	26	1.0	GG	5F	4.138	4.08	4.37	—	3.27	1.26	0.98	0.28	1.2
26H150T	1610		1.5	GG	5F	4.138	4.08	4.37	—	3.23	1.77	0.98	0.79	1.4
26H200T	1610		2.0	GG	5F	4.138	4.08	4.37	—	3.23	2.28	0.98	1.30	1.8
26H300T	1615		3.0	GG	4F	4.138	4.08	4.37	—	3.27	3.31	1.50	0.91	2.7
27H100T	1610	27	1.0	GG	5F	4.297	4.24	4.53	—	3.43	1.26	0.98	0.28	1.3
27H150T	1610		1.5	GG	5F	4.297	4.24	4.53	—	3.43	1.77	0.98	0.79	1.6
27H200T	1610		2.0	GG	5F	4.297	4.24	4.53	—	3.43	2.28	0.98	1.30	1.9
27H300T	2012		3.0	GG	4F	4.297	4.24	4.53	—	3.43	3.31	1.26	1.02	3.0
28H100T	1610	28	1.0	GG	5F	4.456	4.40	4.69	—	3.58	1.26	0.98	0.28	1.5
28H150T	1610		1.5	GG	5F	4.456	4.40	4.69	—	3.58	1.77	0.98	0.79	1.8
28H200T	1610		2.0	GG	5F	4.456	4.40	4.69	—	3.58	2.28	0.98	1.30	1.9
28H300T	2012		3.0	GG	4F	4.456	4.40	4.69	—	3.58	3.31	1.26	1.02	2.4
30H100T	1610	30	1.0	GG	5F	4.775	4.72	5.00	—	3.90	1.26	0.98	0.28	1.7
30H150T	1610		1.5	GG	5F	4.775	4.72	5.00	—	3.90	1.77	0.98	0.79	2.0
30H200T	1610		2.0	GG	5F	4.775	4.72	5.00	—	3.90	2.28	0.98	1.30	2.3
30H300T	2012		3.0	GG	4F	4.775	4.72	5.00	—	3.90	3.31	1.26	1.03	2.9
32H100T	1610	32	1.0	GG	5WF	5.093	5.04	5.31	3.62	4.25	1.26	0.98	0.28	2.0
32H150T	1610		1.5	GG	5WF	5.093	5.04	5.31	3.62	4.25	1.77	0.98	0.79	2.3
32H200T	2012		2.0	GG	5F	5.093	5.04	5.31	—	4.21	2.28	1.26	1.02	3.0
32H300T*	2517		3.0	GG	4F	5.093	5.04	5.31	—	4.21	3.31	1.77	0.77	3.3
36H100T	1610	36	1.0	GG	5WF	5.730	5.68	5.98	3.62	4.88	1.26	0.98	0.28	2.7
36H150T	1610		1.5	GG	5WF	5.730	5.68	5.98	3.62	4.88	1.77	0.98	0.79	3.1
36H200T	2012		2.0	GG	5WF	5.730	5.68	5.98	4.02	4.88	2.28	1.26	1.02	3.0
36H300T*	2517		3.0	GG	4F	5.730	5.68	5.98	—	4.88	3.31	1.77	0.77	4.5

Note: Pilot bore available on request. GG = Cast Iron. * Requires TL Bushing with BSW screws.

Synchronous Pulleys - Taper Bushed



H - Series - 1/2" Pitch x 1", 1 1/2", 2" and 3" Belt Widths

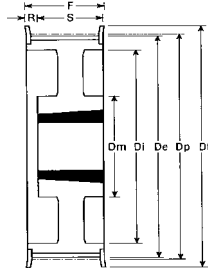


Fig 5WF

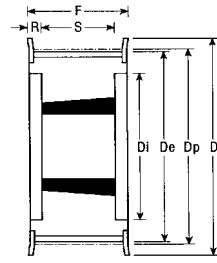


Fig 4F

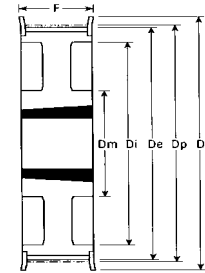


Fig 3WF

Part No: 44H 100T-2012

- 44 = No. of Teeth
- H = Pitch (XL = 1/5", L = 3/8", H = 1/2")
- 100 = Width of Belt (Inches)
- N = Pilot Bore, T = Taper Bore
- 2012 = Bushing Size

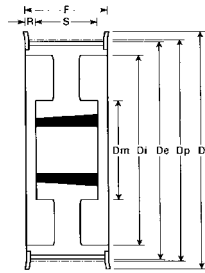


Fig 4WF

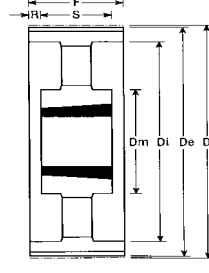


Fig 9A

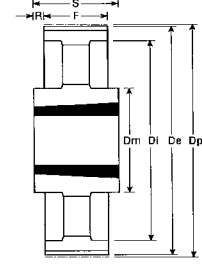


Fig 7A

Dimensions in inches

Part No.	Bushing	Teeth	Belt Width	Material	Figure	Dp	De	Df	Dm	Di	F	S	R	Wt. kg
40H100T	1610	40	1.0	GG	5WF	6.366	6.31	6.61	3.62	5.51	1.26	0.98	0.28	3.6
40H150T	1610		1.5	GG	5WF	6.366	6.31	6.61	3.62	5.51	1.77	0.98	0.79	4.0
40H200T	2012		2.0	GG	5WF	6.366	6.31	6.61	4.17	5.51	2.28	1.26	1.02	3.6
40H300T*	2517		3.0	GG	4F	6.366	6.31	6.61	—	5.39	3.31	1.77	0.77	6.0
44H100T	2012	44	1.0	GG	3WF	7.003	6.95	7.24	4.17	6.02	1.26	1.26	—	3.8
44H150T	2012		1.5	GG	5WF	7.003	6.95	7.24	4.17	6.02	1.77	1.26	0.51	4.4
44H200T	2012		2.0	GG	5WF	7.003	6.95	7.24	4.17	6.02	2.28	1.26	1.02	4.0
44H300T*	2517		3.0	GG	4WF	7.003	6.95	7.24	4.69	6.02	3.39	1.77	0.81	6.6
48H100T	2012	48	1.0	GG	3WF	7.639	7.59	7.87	4.17	6.65	1.26	1.26	—	3.2
48H150T	2012		1.5	GG	5WF	7.639	7.59	7.87	4.17	6.65	1.77	1.26	0.51	4.8
48H200T*	2517		2.0	GG	5WF	7.639	7.59	7.87	4.69	6.65	2.28	1.77	0.51	4.6
48H300T*	2517		3.0	GG	4WF	7.639	7.59	7.87	4.69	6.65	3.39	1.77	0.81	7.6
60H100T	2012	60	1.0	GG	9A	9.549	9.50	—	4.17	8.78	1.34	1.26	0.04	4.8
60H150T	2012		1.5	GG	9A	9.549	9.50	—	4.17	8.78	1.81	1.26	0.28	5.4
60H200T	2517		2.0	GG	9A	9.549	9.50	—	4.69	8.78	2.36	1.77	0.30	7.0
60H300T*	2517		3.0	GG	9A	9.549	9.50	—	4.69	8.78	3.39	1.77	0.81	8.4
72H100T	2012	72	1.0	GG	9A	11.459	11.41	—	4.17	10.63	1.34	1.26	0.04	5.7
72H150T	2012		1.5	GG	9A	11.459	11.41	—	4.17	10.63	1.81	1.26	0.28	6.5
72H200T	2517		2.0	GG	9A	11.459	11.41	—	4.69	10.63	2.36	1.77	0.30	8.0
72H300T*	2517		3.0	GG	9A	11.459	11.41	—	4.69	10.63	3.39	1.77	0.81	10.4
84H100T	2012	84	1.0	GG	9A	13.369	13.31	—	4.17	12.52	1.34	1.26	0.04	6.8
84H150T	2012		1.5	GG	9A	13.369	13.31	—	4.17	12.60	1.81	1.26	0.28	8.4
84H200T*	2517		2.0	GG	9A	13.369	13.31	—	4.69	12.60	2.36	1.77	0.30	9.0
84H300T*	2517		3.0	GG	9A	13.369	13.31	—	4.69	12.60	3.39	1.77	0.81	12.5
96H100T*	2517	96	1.0	GG	7A	15.279	15.22	—	4.69	14.41	1.34	1.77	0.22	8.2
96H150T*	2517		1.5	GG	9A	15.279	15.22	—	4.69	14.41	1.81	1.77	0.02	11.0
96H200T*	2517		2.0	GG	9A	15.279	15.22	—	4.69	14.41	2.36	1.77	0.30	10.0
96H300T	3030		3.0	GG	9A	15.279	15.22	—	5.91	14.25	3.39	2.99	0.20	14.2
120H100T*	2517	120	1.0	GG	7A	19.099	19.04	—	4.69	18.19	1.34	1.77	0.22	12.1
120H150T*	2517		1.5	GG	9A	19.099	19.04	—	4.69	18.19	1.81	1.77	0.02	14.8
120H200T*	2517		2.0	GG	9A	19.099	19.04	—	4.69	18.19	2.36	1.77	0.30	13.4
120H300T	3030		3.0	GG	9A	19.099	19.04	—	5.91	18.11	3.39	2.99	0.20	18.8

Note: Minimum plain bore available on request. GG = Cast Iron. * Requires TL Bushing with BSW screws.

Metric Timing Pulleys

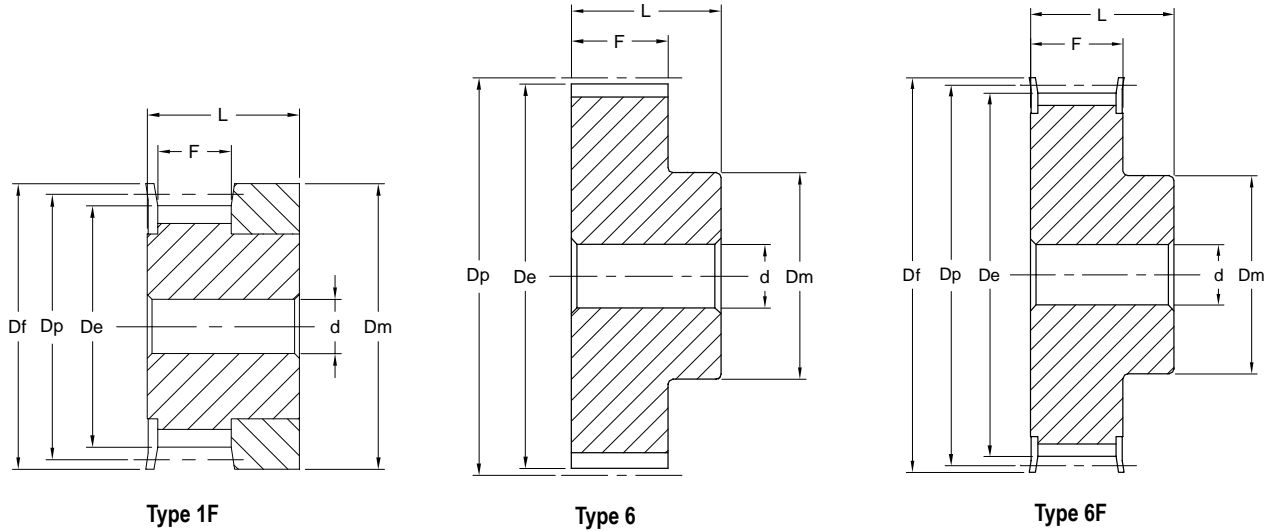


T Series - 2.5 mm Pitch Aluminum, Pilot Bore



Part No: 16T2.5/24-2

- 16 = Length thru Bore
- T2.5 = Tooth Profile and Pitch
- 24 = Number of Teeth
- 2 = Number of Flanges



T - 2.5 mm Pitch x 4 mm or 6mm Belt Width

Dimensions in mm

Part No.	Part Code	Teeth	Type	Belt Width	Material	Dp	De	Df	Dm	F	L	d	Wt. kg
16T2.5/12-2	12T2.5-16	12	1F	4 or 6	AL	9.60	9.00	13.0	6	9	16	4	0.003
16T2.5/14-2	14T2.5-16	14	1F	4 or 6	AL	11.20	10.60	15.0	8	9	16	4	0.004
16T2.5/15-2	15T2.5-16	15	1F	4 or 6	AL	12.00	11.40	15.0	8	9	16	4	0.005
16T2.5/16-2	16T2.5-16	16	1F	4 or 6	AL	12.80	12.20	16.0	9.5	9	16	4	0.005
16T2.5/18-2	18T2.5-16	18	6F	4 or 6	AL	14.40	13.80	17.5	10	10	16	4	0.006
16T2.5/19-2	19T2.5-16	19	6F	4 or 6	AL	15.20	14.60	18.0	10	10	16	4	0.007
16T2.5/20-2	20T2.5-16	20	6F	4 or 6	AL	16.00	15.40	20.0	11	10	16	4	0.008
16T2.5/22-2	22T2.5-16	22	6F	4 or 6	AL	17.60	17.00	23.0	11	10	16	4	0.009
16T2.5/24-2	24T2.5-16	24	6F	4 or 6	AL	19.15	18.55	23.0	12	10	16	4	0.012
16T2.5/25-2	25T2.5-16	25	6F	4 or 6	AL	19.95	19.35	23.0	13	10	16	4	0.01
16T2.5/26-2	26T2.5-16	26	6F	4 or 6	AL	20.75	20.15	25.0	14	10	16	4	0.01
16T2.5/28-2	28T2.5-16	28	6F	4 or 6	AL	22.35	21.75	25.0	14	10	16	4	0.02
16T2.5/30-2	30T2.5-16	30	6F	4 or 6	AL	23.95	23.35	28.0	16	10	16	6	0.02
16T2.5/32-2	32T2.5-16	32	6F	4 or 6	AL	25.95	24.95	32.0	16	10	16	6	0.02
16T2.5/36-2	36T2.5-16	36	6F	4 or 6	AL	28.75	28.10	36.0	20	10	16	6	0.03
16T2.5/40-2	40T2.5-16	40	6F	4 or 6	AL	31.90	31.30	38.0	22	10	16	6	0.03
16T2.5/44-2	44T2.5-16	44	6F	4 or 6	AL	35.10	34.50	42.0	24	10	16	6	0.04
16T2.5/48-0	48T2.5-16	48	6	4 or 6	AL	38.30	37.70	—	26	10	16	6	0.05
16T2.5/60-0	20T2.5-16	60	6	4 or 6	AL	47.85	47.25	—	34	10	16	8	0.07

Note: Finished Bore & Keyway available on request.

Metric Timing Pulleys



T Series - 5 mm Pitch Aluminum, Pilot Bore

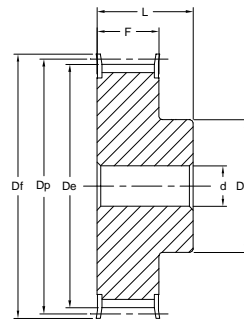
Part No: 21T5/24-2

21 = Length thru Bore

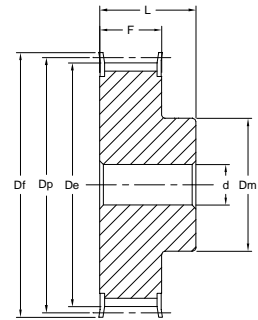
T5 = Tooth Profile and Pitch

24 = Number of Teeth

2 = Number of Flanges



Type 6



Type 6F

T-5 mm Pitch x 10 mm Belt Width

Dimensions in mm

Part No.	Part Code	Teeth	Type	Belt Width	Material	Dp	De	Df	Dm	F	L	d	Wt. kg
21T5/10-2	10T5-21	10	6F	10	AL	16.05	15.05	20.0	8	15	21	4	0.01
21T5/12-2	12T5-21	12	6F	10	AL	19.25	18.25	23.0	11	15	21	4	0.02
21T5/14-2	14T5-21	14	6F	10	AL	22.45	21.45	25.0	13	15	21	4	0.02
21T5/15-2	15T5-21	15	6F	10	AL	24.05	23.05	28.0	16	15	21	6	0.02
21T5/16-2	16T5-21	16	6F	10	AL	25.06	24.60	32.0	18	15	21	6	0.03
21T5/18-2	18T5-21	18	6F	10	AL	28.80	27.80	32.0	20	15	21	6	0.03
21T5/19-2	19T5-21	19	6F	10	AL	30.40	29.40	36.0	22	15	21	6	0.04
21T5/20-2	20T5-21	20	6F	10	AL	32.00	31.00	36.0	23	15	21	6	0.04
21T5/22-2	22T5-21	22	6F	10	AL	35.15	34.15	38.0	24	15	21	6	0.05
21T5/24-2	24T5-21	24	6F	10	AL	38.40	37.40	42.0	26	15	21	6	0.05
21T5/25-2	25T5-21	25	6F	10	AL	39.95	38.95	44.0	26	15	21	6	0.09
21T5/26-2	26T5-21	26	6F	10	AL	41.60	40.60	44.0	26	15	21	6	0.06
21T5/27-2	27T5-21	27	6F	10	AL	43.20	42.20	48.0	30	15	21	8	0.06
21T5/28-2	28T5-21	28	6F	10	AL	44.75	43.75	48.0	32	15	21	8	0.07
21T5/30-2	30T5-21	30	6F	10	AL	47.95	46.95	51.0	34	15	21	8	0.08
21T5/32-2	32T5-21	32	6F	10	AL	51.10	50.10	54.0	38	15	21	8	0.09
21T5/36-2	36T5-21	36	6F	10	AL	57.45	56.45	63.0	38	15	21	8	0.11
21T5/40-2	40T5-21	40	6F	10	AL	63.85	62.85	66.0	40	15	21	8	0.14
21T5/42-2	42T5-21	42	6F	10	AL	67.00	66.00	71.0	40	15	21	8	0.18
21T5/44-0	44T5-21	44	6	10	AL	70.20	69.20	—	45	15	21	8	0.19
21T5/48-0	48T5-21	48	6	10	AL	76.55	75.55	—	50	15	21	8	0.20
21T5/60-0	60T5-21	60	6	10	AL	95.65	94.65	—	65	15	21	8	0.31

T-5 mm Pitch x 16 mm Belt Width

Part No.	Part Code	Teeth	Type	Belt Width	Material	Dp	De	Df	Dm	F	L	d	Wt. kg
27T5/10-2	10T5-27	10	6F	16	AL	16.05	15.05	20.0	8	21	27	4	0.016
27T5/12-2	10T5-27	12	6F	16	AL	19.25	18.25	23.0	11	21	27	4	0.022
27T5/14-2	14T5-27	14	6F	16	AL	22.45	21.45	25.0	13	21	27	4	0.026
27T5/15-2	15T5-27	15	6F	16	AL	24.05	23.05	28.0	16	21	27	6	0.029
27T5/16-2	16T5-27	16	6F	16	AL	25.06	24.60	32.0	18	21	27	6	0.035
27T5/18-2	18T5-27	18	6F	16	AL	28.80	27.80	32.0	20	21	27	6	0.043
27T5/19-2	19T5-27	19	6F	16	AL	30.40	29.40	36.0	22	21	27	6	0.049
27T5/20-2	20T5-27	20	6F	16	AL	32.00	31.00	36.0	23	21	27	6	0.053
27T5/22-2	22T5-27	22	6F	16	AL	35.15	34.15	38.0	24	21	27	6	0.054
27T5/24-2	24T5-27	24	6F	16	AL	38.40	37.40	42.0	26	21	27	6	0.076
27T5/25-2	25T5-27	25	6F	16	AL	39.95	38.95	44.0	26	21	27	6	0.081
27T5/26-2	26T5-27	26	6F	16	AL	41.60	40.60	44.0	26	21	27	6	0.085
27T5/27-2	27T5-27	27	6F	16	AL	43.20	42.20	48.0	30	21	27	8	0.090
27T5/28-2	28T5-27	28	6F	16	AL	44.75	43.75	48.0	32	21	27	8	0.092
27T5/30-2	30T5-27	30	6F	16	AL	47.95	46.95	51.0	34	21	27	8	0.105
27T5/32-2	32T5-27	32	6F	16	AL	51.10	50.10	54.0	38	21	27	8	0.123
27T5/36-2	36T5-27	36	6F	16	AL	57.45	56.45	63.0	38	21	27	8	0.160
27T5/40-2	40T5-27	40	6F	16	AL	63.85	62.85	66.0	40	21	27	8	0.193
27T5/42-2	42T5-27	42	6F	16	AL	67.00	66.00	71.0	40	21	27	8	0.205
27T5/44-0	44T5-27	44	6	16	AL	70.20	69.20	—	45	21	27	8	0.228
27T5/48-0	48T5-27	48	6	16	AL	76.55	75.55	—	50	21	27	8	0.280
27T5/60-0	60T5-27	60	6	16	AL	95.65	94.65	—	65	21	27	8	0.430

Note: Finished Bore & Keyway available on request.

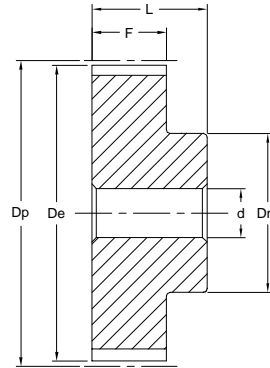
Metric Timing Pulleys



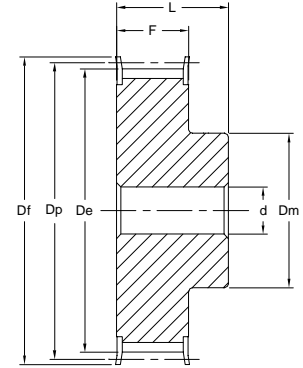
T Series - 5 mm Pitch Aluminum, Pilot Bore

Part No: 36T5/24-2

- 36 = Length thru Bore
- T5 = Tooth Profile and Pitch
- 24 = Number of Teeth
- 2 = Number of Flanges



Type 6



Type 6F

T-5 mm Pitch x 25 mm Belt Width

Dimensions in mm

Part No.	Part Code	Teeth	Type	Belt Width	Material	Dp	De	Df	Dm	F	L	d	Wt. kg
36T5/10-2	10T5-36	10	6F	25	AL	16.05	15.05	20.0	8	30	36	4	0.023
36T5/12-2	12T5-36	12	6F	25	AL	19.25	18.25	23.0	11	30	36	4	0.031
36T5/14-2	14T5-36	14	6F	25	AL	22.45	21.45	25.0	13	30	36	4	0.037
36T5/15-2	15T5-36	15	6F	25	AL	24.05	23.05	28.0	16	30	36	6	0.041
36T5/16-2	16T5-36	16	6F	25	AL	25.60	24.60	32.0	18	30	36	6	0.050
36T5/18-2	18T5-36	18	6F	25	AL	28.80	27.80	32.0	20	30	36	6	0.061
36T5/19-2	19T5-36	19	6F	25	AL	30.40	29.40	36.0	22	30	36	6	0.070
36T5/20-2	20T5-36	20	6F	25	AL	32.00	31.00	36.0	23	30	36	6	0.076
36T5/22-2	22T5-36	22	6F	25	AL	35.25	34.15	38.0	24	30	36	6	0.080
36T5/24-2	24T5-36	24	6F	25	AL	38.40	37.40	42.0	26	30	36	8	0.109
36T5/25-2	25T5-36	25	6F	25	AL	40.00	38.95	44.0	26	30	36	8	0.116
36T5/26-2	26T5-36	26	6F	25	AL	41.60	40.60	44.0	26	30	36	8	0.120
36T5/27-2	27T5-36	27	6F	25	AL	43.20	42.20	48.0	30	30	36	8	0.128
36T5/28-2	28T5-36	28	6F	25	AL	44.75	43.75	48.0	32	30	36	8	0.126
36T5/30-2	30T5-36	30	6F	25	AL	47.95	46.95	51.0	34	30	36	8	0.150
36T5/32-2	32T5-36	32	6F	25	AL	51.10	50.10	54.0	38	30	36	8	0.176
36T5/36-2	36T5-36	36	6F	25	AL	57.45	56.45	64.0	38	30	36	8	0.230
36T5/40-2	40T5-36	40	6F	25	AL	63.85	62.85	66.0	40	30	36	8	0.276
36T5/42-2	42T5-36	42	6F	25	AL	67.00	66.00	70.0	40	30	36	8	0.284
36T5/44-0	44T5-36	44	6	25	AL	70.20	69.20	—	45	30	36	8	0.315
36T5/48-0	48T5-36	48	6	25	AL	76.55	75.55	—	50	30	36	8	0.400
36T5/60-0	60T5-36	60	6	25	AL	95.65	94.65	—	65	30	36	8	0.614

Note: Finished Bore & Keyway available on request.

Metric Timing Pulleys



T Series - 10 mm Pitch Aluminum, Pilot Bore

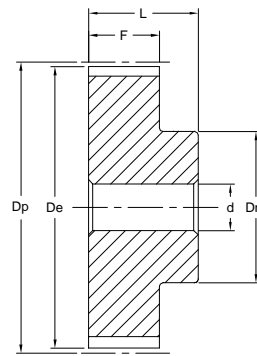
Part No: 31T10/25-2

31 = Length thru Bore

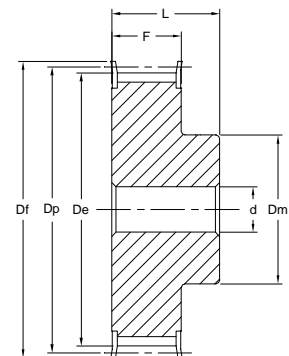
T10 = Tooth Profile and Pitch

25 = Number of Teeth

2 = Number of Flanges



Type 6



Type 6F

Dimensions in mm

T-10 mm Pitch x 16 mm Belt Width

Part No.	Part Code	Teeth	Type	Belt Width	Material	Dp	De	Df	Dm	F	L	d	Wt. kg
31T10/12-2	12T10-31	12	6F	16	AL	38.35	36.35	42	28	21	31	6	0.076
31T10/14-2	14T10-31	14	6F	16	AL	44.72	42.70	48	32	21	31	8	0.104
31T10/15-2	15T10-31	15	6F	16	AL	47.90	45.90	51	32	21	31	8	0.116
31T10/16-2	16T10-31	16	6F	16	AL	51.05	49.05	54	35	21	31	8	0.134
31T10/18-2	18T10-31	18	6F	16	AL	57.45	55.45	60	40	21	31	8	0.167
31T10/19-2	19T10-31	19	6F	16	AL	60.60	58.60	66	44	21	31	8	0.184
31T10/20-2	20T10-31	20	6F	16	AL	63.80	61.80	66	46	21	31	8	0.208
31T10/22-2	22T10-31	22	6F	16	AL	70.15	68.15	75	52	21	31	8	0.253
31T10/24-2	24T10-31	24	6F	16	AL	76.55	74.55	83	58	21	31	8	0.288
31T10/25-2	25T10-31	25	6F	16	AL	79.70	77.70	83	60	21	31	8	0.310
31T10/26-2	26T10-31	26	6F	16	AL	82.90	80.90	87	60	21	31	8	0.357
31T10/27-2	27T10-31	27	6F	16	AL	86.10	84.10	91	60	21	31	8	0.364
31T10/28-2	28T10-31	28	6F	16	AL	89.25	87.25	93	60	21	31	8	0.401
31T10/30-2	30T10-31	30	6F	16	AL	95.65	93.65	97	60	21	31	8	0.441
31T10/32-2	32T10-31	32	6F	16	AL	102.00	100.00	106	65	21	31	10	0.493
31T10/36-2	36T10-31	36	6F	16	AL	114.75	112.75	120	70	21	31	10	0.623
31T10/40-2	40T10-31	40	6F	16	AL	127.45	125.45	131	80	21	31	10	0.767
31T10/44-0	44T10-31	44	6	16	AL	140.20	138.20	—	88	21	31	10	0.993
31T10/48-0	48T10-31	48	6	16	AL	152.95	150.95	—	95	21	31	16	1.090
31T10/60-0	60T10-31	60	6	16	AL	191.10	189.10	—	110	21	31	16	1.701

T-10 mm Pitch x 25 mm Belt Width

Part No.	Part Code	Teeth	Type	Belt Width	Material	Dp	De	Df	Dm	F	L	d	Wt. kg
40T10/12-2	12T10-40	12	6F	25	AL	38.35	36.35	42	28	30	40	6	0.076
40T10/14-2	14T10-40	14	6F	25	AL	44.70	42.70	48	32	30	40	8	0.104
40T10/15-2	15T10-40	15	6F	25	AL	47.90	45.90	51	32	30	40	8	0.116
40T10/16-2	16T10-40	16	6F	25	AL	51.05	49.05	54	35	30	40	8	0.134
40T10/18-2	18T10-40	18	6F	25	AL	57.45	55.45	60	40	30	40	8	0.167
40T10/19-2	19T10-40	19	6F	25	AL	60.60	58.60	66	44	30	40	8	0.184
40T10/20-2	20T10-40	20	6F	25	AL	63.80	61.80	66	46	30	40	8	0.208
40T10/22-2	22T10-40	22	6F	25	AL	70.15	68.15	75	52	30	40	8	0.253
40T10/24-2	24T10-40	24	6F	25	AL	76.55	74.55	83	58	30	40	8	0.288
40T10/25-2	25T10-40	25	6F	25	AL	79.70	77.70	83	60	30	40	8	0.310
40T10/26-2	26T10-40	26	6F	25	AL	82.90	80.90	87	60	30	40	8	0.357
40T10/27-2	27T10-40	27	6F	25	AL	86.10	84.10	91	60	30	40	8	0.364
40T10/28-2	28T10-40	28	6F	25	AL	89.25	87.25	93	60	30	40	8	0.401
40T10/30-2	30T10-40	30	6F	25	AL	95.65	93.65	97	60	30	40	8	0.441
40T10/32-2	32T10-40	32	6F	25	AL	102.00	100.00	106	65	30	40	10	0.493
40T10/36-2	36T10-40	36	6F	25	AL	114.75	112.75	120	70	30	40	10	0.623
40T10/40-2	40T10-40	40	6F	25	AL	127.45	125.45	131	80	30	40	10	0.767
40T10/44-0	44T10-40	44	6	25	AL	140.20	138.20	—	88	30	40	10	0.993
40T10/48-0	48T10-40	48	6	25	AL	152.95	150.95	—	95	30	40	16	1.090
40T10/60-0	60T10-40	60	6	25	AL	191.10	189.10	—	110	30	40	16	1.701

Note: Finished Bore & Keyway available on request.

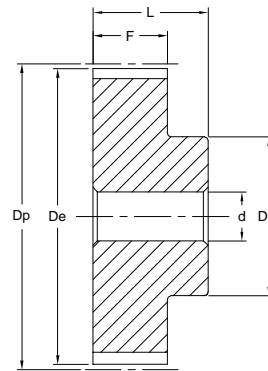
Metric Timing Pulleys



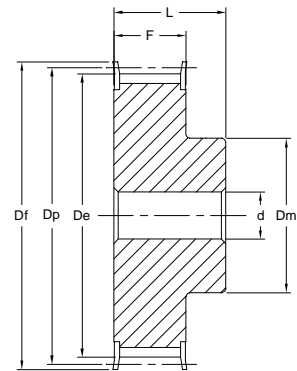
T Series - 10 mm Pitch Aluminum, Pilot Bore

Part No: 47T10/28-2

- 47 = Length thru Bore
- T10 = Tooth Profile and Pitch
- 28 = Number of Teeth
- 2 = Number of Flanges



Type 6



Type 6F

T-10 mm Pitch x 32 mm Belt Width

Dimensions in mm

Part No.	Part Code	Teeth	Type	Belt Width	Material	Dp	De	Df	Dm	F	L	d	Wt. kg
47T10/18-2	18T10-47	18	6F	32	AL	57.45	55.45	60	40	37	47	10	0.253
47T10/19-2	19T10-47	19	6F	32	AL	60.65	58.60	66	44	37	47	10	0.286
47T10/20-2	20T10-47	20	6F	32	AL	63.80	61.80	66	46	37	47	12	0.322
47T10/22-2	22T10-47	22	6F	32	AL	70.20	68.15	75	52	37	47	12	0.939
47T10/24-2	24T10-47	24	6F	32	AL	76.55	74.55	83	58	37	47	12	0.475
47T10/25-2	25T10-47	25	6F	32	AL	79.75	77.70	83	60	37	47	12	0.527
47T10/26-2	26T10-47	26	6F	32	AL	82.90	80.90	87	60	37	47	12	0.564
47T10/27-2	27T10-47	27	6F	32	AL	86.10	84.10	91	60	37	47	12	0.602
47T10/28-2	28T10-47	28	6F	32	AL	89.25	87.25	93	60	37	47	12	0.642
47T10/30-2	30T10-47	30	6F	32	AL	95.65	93.65	97	60	37	47	12	0.740
47T10/32-2	32T10-47	32	6F	32	AL	102.00	100.00	106	65	37	47	12	0.844
47T10/36-2	36T10-47	36	6F	32	AL	114.75	112.75	120	70	37	47	16	1.063
47T10/40-2	40T10-47	40	6F	32	AL	127.45	125.45	131	80	37	47	16	1.317
47T10/44-0	44T10-47	44	6	32	AL	140.20	138.20	—	88	37	47	16	1.611
47T10/48-0	48T10-47	48	6	32	AL	152.95	150.95	—	95	37	47	16	1.931
47T10/60-0	60T10-47	60	6	32	AL	191.10	189.10	—	110	37	47	16	3.004

T-10 mm Pitch x 50 mm Belt Width

Part No.	Part Code	Teeth	Type	Belt Width	Material	Dp	De	Df	Dm	F	L	d	Wt. kg
66T10/18-2	18T10-66	18	6F	50	AL	57.45	55.45	60	40	56	66	10	0.422
66T10/19-2	19T10-66	19	6F	50	AL	60.65	58.60	66	44	56	66	10	0.466
66T10/20-2	20T10-66	20	6F	50	AL	63.80	61.80	66	46	56	66	12	0.520
66T10/22-2	22T10-66	22	6F	50	AL	70.20	68.15	75	52	56	66	12	0.570
66T10/24-2	24T10-66	24	6F	50	AL	76.55	74.55	83	58	56	66	12	0.736
66T10/25-2	25T10-66	25	6F	50	AL	79.75	77.70	83	60	56	66	12	0.766
66T10/26-2	26T10-66	26	6F	50	AL	82.90	80.90	87	60	56	66	12	0.816
66T10/27-2	27T10-66	27	6F	50	AL	86.10	84.10	91	60	56	66	12	0.946
66T10/28-2	28T10-66	28	6F	50	AL	89.25	87.25	93	60	56	66	12	0.960
66T10/30-2	30T10-66	30	6F	50	AL	95.65	93.65	97	60	56	66	12	1.169
66T10/32-2	32T10-66	32	6F	50	AL	102.00	100.00	106	65	56	66	12	1.300
66T10/36-2	36T10-66	36	6F	50	AL	114.75	112.75	120	70	56	66	16	1.637
66T10/40-2	40T10-66	40	6F	50	AL	127.45	125.45	131	80	56	66	16	1.999
66T10/44-0	44T10-66	44	6	50	AL	140.20	138.20	—	88	56	66	16	2.357
66T10/48-0	48T10-66	48	6	50	AL	152.95	150.95	—	95	56	66	16	2.830
66T10/60-0	60T10-66	60	6	50	AL	191.10	189.10	—	110	56	66	16	4.366

Note: Finished Bore & Keyway available on request

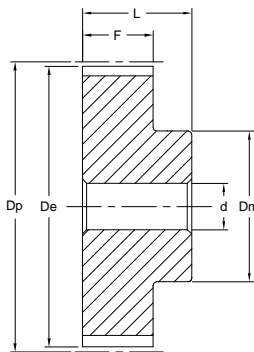
Metric Timing Pulleys



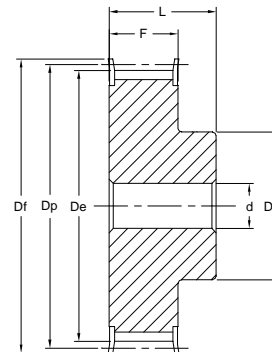
AT Series - 5 mm Pitch Aluminum, Pilot Bore

Part No: 21AT5/20-2

- 21 = Length thru Bore
- AT5 = Tooth Profile and Pitch
- 20 = Number of Teeth
- 2 = Number of Flanges



Type 6



Type 6 F

AT 5 mm Pitch x 10 mm Belt Width

Dimensions in mm

Part No.	Part Code	Teeth	Type	Dp	De	Df	Dm	F	L	d	Wt. kg
21AT5/12-2	12ST5-21	12	6F	19.25	17.85	23.0	11	15	21	4	0.018
21AT5/14-2	14ST5-21	14	6F	22.45	21.05	25.0	14	15	21	4	0.019
21AT5/15-2	15ST5-21	15	6F	24.05	22.65	28.0	16	15	21	6	0.021
21AT5/16-2	16ST5-21	16	6F	25.60	24.20	32.0	18	15	21	6	0.025
21AT5/18-2	18ST5-21	18	6F	28.80	27.40	32.0	20	15	21	6	0.031
21AT5/19-2	19ST5-21	19	6F	30.40	29.00	36.0	22	15	21	6	0.036
21AT5/20-2	20ST5-21	20	6F	32.00	30.60	36.0	23	15	21	6	0.038
21AT5/22-2	22ST5-21	22	6F	35.25	33.85	38.0	24	15	21	6	0.048
21AT5/24-2	24ST5-21	24	6F	38.40	37.00	42.0	26	15	21	6	0.054
21AT5/25-2	25ST5-21	25	6F	40.00	38.60	44.0	26	15	21	6	0.058
21AT5/26-2	26ST5-21	26	6F	41.60	40.20	44.0	26	15	21	6	0.062
21AT5/27-2	27ST5-21	27	6F	43.20	41.80	48.0	30	15	21	8	0.064
21AT5/28-2	28ST5-21	28	6F	44.75	43.35	48.0	32	15	21	8	0.071
21AT5/30-2	30ST5-21	30	6F	47.95	46.55	51.0	34	15	21	8	0.076
21AT5/32-2	32ST5-21	32	6F	51.10	49.70	54.0	38	15	21	8	0.088
21AT5/36-2	36ST5-21	36	6F	57.45	56.05	64.0	38	15	21	8	0.114
21AT5/40-2	40ST5-21	40	6F	63.85	62.45	66.0	40	15	21	8	0.138
21AT5/42-2	42ST5-21	42	6F	67.00	65.60	70.0	40	15	21	8	0.180
21AT5/44-0	44ST5-21	44	6	70.20	68.80	—	45	15	21	8	0.185
21AT5/48-0	48ST5-21	48	6	76.55	75.15	—	50	15	21	8	0.200
21AT5/60-0	60ST5-21	60	6	95.65	94.25	—	65	15	21	8	0.307

AT 5 mm Pitch x 16 mm Belt Width

Part No.	Part Code	Teeth	Type	Dp	De	Df	Dm	F	L	d	Wt. kg
27AT5/12-2	12ST5-27	12	6F	19.25	17.85	23.0	11	21	27	4	0.022
27AT5/14-2	14ST5-27	14	6F	22.45	21.05	25.0	14	21	27	4	0.026
27AT5/15-2	15ST5-27	15	6F	24.05	22.65	28.0	16	21	27	6	0.029
27AT5/16-2	16ST5-27	16	6F	25.60	24.20	32.0	18	21	27	6	0.035
27AT5/18-2	18ST5-27	18	6F	28.80	27.40	32.0	20	21	27	6	0.043
27AT5/19-2	19ST5-27	19	6F	30.40	29.00	36.0	22	21	27	6	0.049
27AT5/20-2	20ST5-27	20	6F	32.00	30.60	36.0	23	21	27	6	0.053
27AT5/22-2	22ST5-27	22	6F	35.25	33.85	38.0	24	21	27	6	0.054
27AT5/24-2	24ST5-27	24	6F	38.40	37.00	42.0	26	21	27	6	0.076
27AT5/25-2	25ST5-27	25	6F	40.00	38.60	44.0	26	21	27	6	0.081
27AT5/26-2	26ST5-27	26	6F	41.60	40.20	44.0	26	21	27	6	0.085
27AT5/27-2	27ST5-27	27	6F	43.20	41.80	48.0	30	21	27	8	0.090
27AT5/28-2	28ST5-27	28	6F	44.75	43.35	48.0	32	21	27	8	0.092
27AT5/30-2	30ST5-27	30	6F	47.95	46.55	51.0	34	21	27	8	0.105
27AT5/32-2	32ST5-27	32	6F	51.10	49.70	54.0	38	21	27	8	0.123
27AT5/36-2	36ST5-27	36	6F	57.45	56.05	64.0	38	21	27	8	0.160
27AT5/40-2	40ST5-27	40	6F	63.85	62.45	66.0	40	21	27	8	0.193
27AT5/42-2	42ST5-27	42	6F	67.00	65.60	70.0	40	21	27	8	0.205
27AT5/44-0	44ST5-27	44	6	70.20	68.80	—	45	21	27	8	0.228
27AT5/48-0	48ST5-27	48	6	76.55	75.15	—	50	21	27	8	0.280
27AT5/60-0	60ST5-27	60	6	95.65	94.25	—	65	21	27	8	0.430

Note: Finished Bore & Keyway available on request.

Metric Timing Pulleys



AT Series - 5 and 10mm Pitch Aluminum, Pilot Bore

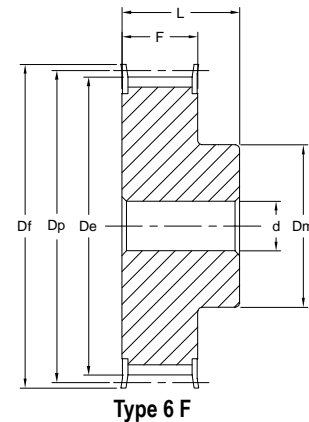
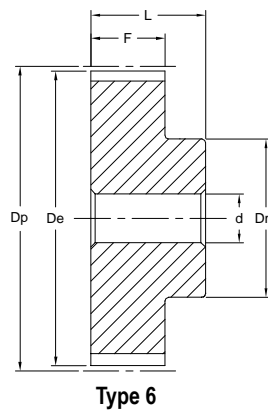
Part No: 36AT5/20-2

36 = Length thru Bore

AT5 = Tooth Profile and Pitch

20 = Number of Teeth

2 = Number of Flanges



AT 5 mm Pitch x 25 mm Belt Width

Dimensions in mm

Part No.	Part Code	Teeth	Type	Dp	De	Df	Dm	F	L	d	Wt. kg
36AT5/12-2	12ST5-36	12	6F	19.25	17.85	23.0	11	30	36	—	0.031
36AT5/14-2	14ST5-36	14	6F	22.45	21.05	25.0	14	30	36	—	0.037
36AT5/15-2	15ST5-36	15	6F	24.05	22.65	28.0	16	30	36	—	0.041
36AT5/16-2	16ST5-36	16	6F	25.60	24.20	32.0	18	30	36	—	0.050
36AT5/18-2	18ST5-36	18	6F	28.80	27.40	32.0	20	30	36	—	0.061
36AT5/19-2	19ST5-36	19	6F	30.40	29.00	36.0	22	30	36	—	0.070
36AT5/20-2	20ST5-36	20	6F	32.00	30.60	36.0	23	30	36	—	0.076
36AT5/22-2	22ST5-36	22	6F	35.25	33.85	38.0	24	30	36	—	0.080
36AT5/24-2	24ST5-36	24	6F	38.40	37.00	42.0	26	30	36	—	0.109
36AT5/25-2	25ST5-36	25	6F	40.00	38.60	44.0	26	30	36	—	0.118
36AT5/26-2	26ST5-36	26	6F	41.60	40.20	44.0	26	30	36	—	0.120
36AT5/27-2	27ST5-36	27	6F	43.20	41.80	48.0	30	30	36	8	0.128
36AT5/28-2	28ST5-36	28	6F	44.75	43.35	48.0	32	30	36	8	0.135
36AT5/30-2	30ST5-36	30	6F	47.95	46.55	51.0	34	30	36	8	0.150
36AT5/32-2	32ST5-36	32	6F	51.10	49.70	54.0	38	30	36	8	0.178
36AT5/36-2	36ST5-36	36	6F	57.45	56.05	64.0	38	30	36	8	0.230
36AT5/40-2	40ST5-36	40	6F	63.85	62.45	66.5	40	30	36	8	0.278
36AT5/42-2	42ST5-36	42	6F	67.00	65.60	70.0	40	30	36	8	0.284
36AT5/44-0	44ST5-36	44	6	70.20	68.80	—	45	30	36	8	0.315
36AT5/48-0	48ST5-36	48	6	76.55	75.15	—	50	30	36	8	0.400
36AT5/60-0	60ST5-36	60	6	95.65	94.25	—	65	30	36	8	0.614

AT 10 mm Pitch x 16 mm Belt Width

Part No.	Part Code	Teeth	Type	Dp	De	Df	Dm	F	L	d	Wt. kg
31AT10/15-2	15ST10-31	15	6F	47.90	45.90	51	32	21	31	8	0.118
31AT10/16-2	16ST10-31	16	6F	51.05	49.05	54	35	21	31	8	0.134
31AT10/18-2	18ST10-31	18	6F	57.45	55.45	60	40	21	31	8	0.167
31AT10/19-2	19ST10-31	19	6F	60.60	58.60	66.5	44	21	31	8	0.184
31AT10/20-2	20ST10-31	20	6F	63.80	61.80	66.5	46	21	31	8	0.208
31AT10/22-2	22ST10-31	22	6F	70.15	68.15	75	52	21	31	8	0.253
31AT10/24-2	24ST10-31	24	6F	76.55	74.55	83	58	21	31	8	0.288
31AT10/25-2	25ST10-31	25	6F	79.70	77.70	83	60	21	31	8	0.310
31AT10/26-2	26ST10-31	26	6F	82.90	80.90	87	60	21	31	8	0.357
31AT10/27-2	27ST10-31	27	6F	86.10	84.10	91	60	21	31	8	0.364
31AT10/28-2	28ST10-31	28	6F	89.25	87.25	93	60	21	31	8	0.401
31AT10/30-2	30ST10-31	30	6F	95.65	93.65	97	60	21	31	8	0.441
31AT10/32-2	32ST10-31	32	6F	102.00	100.00	106	65	21	31	10	0.493
31AT10/36-2	36ST10-31	36	6F	114.75	112.75	119	70	30	36	10	0.623
31AT10/40-2	40ST10-31	40	6F	127.45	125.45	131	80	21	31	10	0.787
31AT10/44-0	44ST10-31	44	6	140.20	138.20	—	88	21	31	10	0.993
31AT10/48-0	48ST10-31	48	6	152.95	150.95	—	95	21	31	16	1.090
31AT10/60-0	60ST10-31	60	6	191.10	189.10	—	110	21	31	16	1.701

Note: Finished Bore & Keyway available on request.

Metric Timing Pulleys



AT Series - 10 mm Pitch Aluminum, Pilot Bore

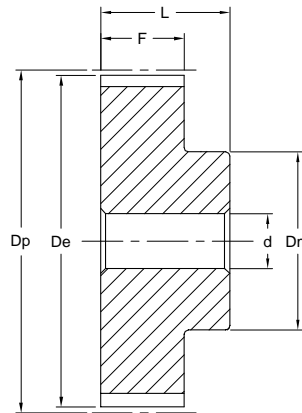
Part No: 40AT10/20-2

40 = Length thru Bore

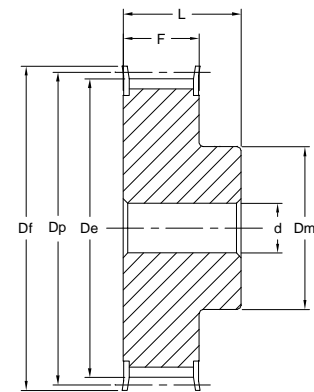
AT10 = Tooth Profile and Pitch

20 = Number of Teeth

2 = Number of Flanges



Type 6



Type 6 F

AT 10 mm Pitch x 25 mm Belt Width

Dimensions in mm

Part No.	Part Code	Teeth	Type	Dp	De	Df	Dm	F	L	d	Wt. kg
40AT10/15-2	15ST10-40	15	6F	47.90	45.90	51	31	30	40	8	0.152
40AT10/16-2	16ST10-40	16	6F	51.05	49.05	54	35	30	40	8	0.176
40AT10/18-2	18ST10-40	18	6F	57.45	55.45	60	40	30	40	8	0.224
40AT10/19-2	19ST10-40	19	6F	60.60	58.60	66	44	30	40	8	0.247
40AT10/20-2	20ST10-40	20	6F	63.80	61.80	66	46	30	40	8	0.276
40AT10/22-2	22ST10-40	22	6F	70.15	68.15	75	52	30	40	8	0.337
40AT10/24-2	24ST10-40	24	6F	76.55	74.55	83	58	30	40	8	0.392
40AT10/25-2	25ST10-40	25	6F	79.70	77.70	83	60	30	40	8	0.422
40AT10/26-2	26ST10-40	26	6F	82.90	80.90	87	60	30	40	8	0.477
40AT10/27-2	27ST10-40	27	6F	86.10	84.10	91	60	30	40	8	0.536
40AT10/28-2	28ST10-40	28	6F	89.25	87.25	93	60	30	40	8	0.540
40AT10/30-2	30ST10-40	30	6F	95.65	93.65	97	60	30	40	8	0.640
40AT10/32-2	32ST10-40	32	6F	102.00	100.00	106	65	30	40	10	0.693
40AT10/36-2	36ST10-40	36	6F	114.75	112.75	120	70	30	40	10	0.873
40AT10/40-2	40ST10-40	40	6F	127.45	125.45	135	80	30	40	10	1.067
40AT10/44-0	44ST10-40	44	6	140.20	138.20	—	88	30	40	10	1.350
40AT10/48-0	48ST10-40	48	6	152.95	150.95	—	95	30	40	16	1.516
40AT10/60-0	60ST10-40	60	6	191.10	189.10	—	110	30	40	16	2.339

AT 10 mm Pitch x 32 mm Belt Width

Part No.	Part Code	Teeth	Type	Dp	De	Df	Dm	F	L	d	Wt. kg
47AT10/18-2	18ST10-47	18	6F	57.45	55.45	60	40	37	47	10	0.253
47AT10/19-2	19ST10-47	19	6F	60.60	58.60	66	44	37	47	10	0.286
47AT10/20-2	20ST10-47	20	6F	63.80	61.80	66	46	37	47	12	0.322
47AT10/22-2	22ST10-47	22	6F	70.15	68.15	75	52	37	47	12	0.393
47AT10/24-2	24ST10-47	24	6F	76.55	74.55	83	58	37	47	12	0.475
47AT10/25-2	25ST10-47	25	6F	79.70	77.70	83	60	37	47	12	0.527
47AT10/26-2	26ST10-47	26	6F	82.90	80.90	87	60	37	47	12	0.564
47AT10/27-2	27ST10-47	27	6F	86.10	84.10	91	60	37	47	12	0.602
47AT10/28-2	28ST10-47	28	6F	89.25	87.25	93	60	37	47	12	0.642
47AT10/30-2	30ST10-47	30	6F	95.65	93.65	97	60	37	47	12	0.740
47AT10/32-2	32ST10-47	32	6F	102.00	100.00	106	65	37	47	12	0.844
47AT10/36-2	36ST10-47	36	6F	114.75	112.75	120	70	37	47	16	1.063
47AT10/40-2	40ST10-47	40	6F	127.45	125.45	135	80	37	47	16	1.317
47AT10/44-0	44ST10-47	44	6	140.20	138.20	—	88	37	47	16	1.611
47AT10/48-0	48ST10-47	48	6	152.95	150.95	—	95	37	47	16	1.931
47AT10/60-0	60ST10-47	60	6	191.10	189.10	—	110	37	47	16	3.004

Note: Finished Bore & Keyway available on request.

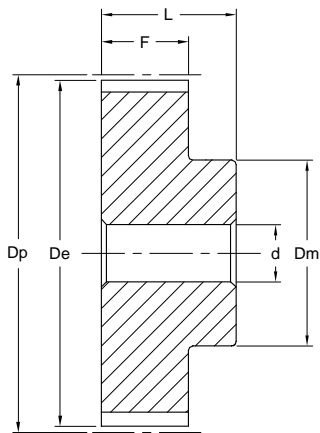
Metric Timing Pulleys



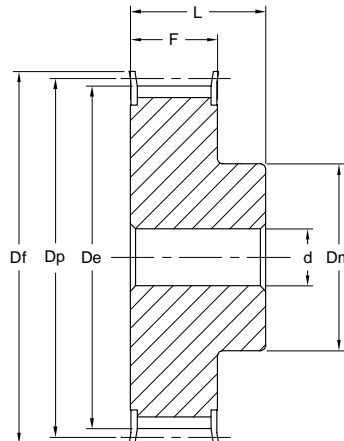
AT Series - 10 mm Pitch Aluminum - Pilot Bore

Part No: 66AT10/20-2

- 66 = Length thru Bore
- AT10 = Tooth Profile and Pitch
- 20 = Number of Teeth
- 2 = Number of Flanges



Type 6



Type 6 F

AT 10 mm Pitch x 50 mm Belt Width

Dimensions in mm

Part No.	Part Code	Teeth	Type	Dp	De	Df	Dm	F	L	d	Wt. kg
66AT10/18-2	18ST10-66	18	6F	57.45	55.45	60	40	56	66	10	0.422
66AT10/19-2	19ST10-66	19	6F	60.60	58.60	66.5	44	56	66	10	0.466
66AT10/20-2	20ST10-66	20	6F	63.80	61.80	66.5	46	56	66	12	0.520
66AT10/22-2	22ST10-66	22	6F	70.15	68.15	75	52	56	66	12	0.570
66AT10/24-2	24ST10-66	24	6F	76.55	74.55	83	58	56	66	12	0.736
66AT10/25-2	25ST10-66	25	6F	79.70	77.70	83	60	56	66	12	0.766
66AT10/26-2	26ST10-66	26	6F	82.90	80.90	87	60	56	66	12	0.816
66AT10/27-2	27ST10-66	27	6F	86.10	84.10	91	60	56	66	12	0.946
66AT10/28-2	28ST10-66	28	6F	89.25	87.25	93	60	56	66	12	0.960
66AT10/30-2	30ST10-66	30	6F	95.65	93.65	97	60	56	66	12	1.169
66AT10/32-2	32ST10-66	32	6F	102.00	100.00	106	65	56	66	12	1.300
66AT10/36-2	36ST10-66	36	6F	114.75	112.75	119	70	56	66	16	1.637
66AT10/40-2	40ST10-66	40	6F	127.45	125.45	131	80	56	66	16	1.999
66AT10/44-0	44ST10-66	44	6	140.20	138.20	—	88	56	66	16	2.357
66AT10/48-0	48ST10-66	48	6	152.95	150.95	—	95	56	66	16	2.830
66AT10/60-0	60ST10-66	60	6	191.10	189.10	—	110	56	66	16	4.368

Note: Finished Bore & Keyway available on request.

5M HTD® Pulleys - Taper Bushed



5 mm Pitch x 15 mm Belt Width

Part No. TL40-5M-15

Where: TL = Taper Bushed Version
 40 = No. of Teeth
 5M = Pitch (5, 8 and 14mm)
 15 = Width of belt (20, 30, 50 and 85)

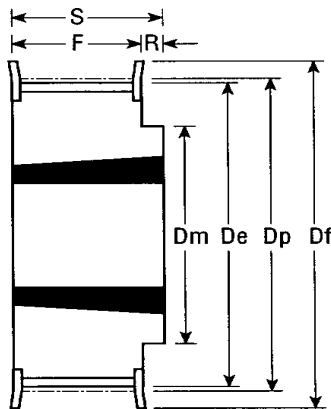


Fig 8F

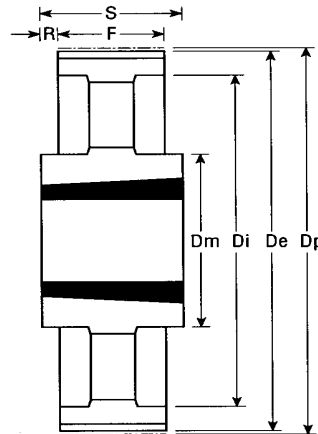


Fig 7A

Dimensions in mm

Part No.	Bushing	Teeth	Belt Width	Material	Figure	Dp	De	Df	Dm	Di	F	S	R	Wt. kg
TL34-5M-15	1008	34	15	ST	8F	54.11	52.97	57	43	—	20.5	22	1.5	0.19
TL36-5M-15	1108	36	15	ST	8F	57.30	56.16	60	44	—	20.5	22	1.5	0.20
TL38-5M-15	1108	38	15	ST	8F	69.48	59.34	66	48	—	20.5	22	1.5	0.25
TL40-5M-15	1108	40	15	ST	8F	63.66	62.52	71	52	—	20.5	22	1.5	0.31
TL44-5M-15	1108	44	15	ST	8F	70.03	68.89	75	54	—	20.5	22	1.5	0.40
TL48-5M-15	1210	48	15	ST	8F	76.39	75.25	83	64	—	20.5	25	4.5	0.45
TL56-5M-15	1210	56	15	GG	8F	89.13	87.99	93	70	—	20.5	25	4.5	0.67
TL64-5M-15	1210	64	15	GG	8F	101.86	100.72	106	78	—	20.5	25	4.5	0.96
TL72-5M-15	1610	72	15	GG	8F	114.59	113.45	119	90	—	20.5	25	4.5	1.19
TL80-5M-15	1610	80	15	GG	8F	127.32	126.18	135	92	—	20.5	25	4.5	1.57
TL90-5M-15	1610	90	15	GG	7A	143.24	142.10	—	92	126	20.5	25	2.3	1.47
TL112-5M-15	1610	112	15	GG	7A	178.25	177.11	—	92	162	20.5	25	2.3	1.94
TL136-5M-15	2012	136	15	GG	7A	216.45	215.31	—	106	199	20.5	32	5.8	3.06
TL150-5M-15	2012	150	15	GG	7A	238.73	237.59	—	106	222	20.5	32	5.8	3.90

Note: ST = Steel, GG = Cast Iron.

8M HTD® Pulleys - Taper Bushed



8 mm HTD® x 20, 30, 50, and 85 mm Belt Widths



Part No. TL32-8M-50

Where: TL = Taper Bushed Version
 32 = No. of Teeth
 8M = Pitch (5, 8 and 14mm)
 50 = Width of belt (20, 30, 50 and 85)

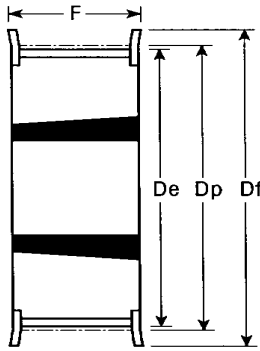


Fig 3F

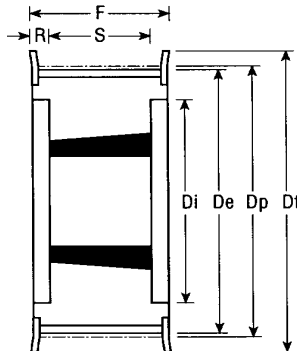


Fig 4F

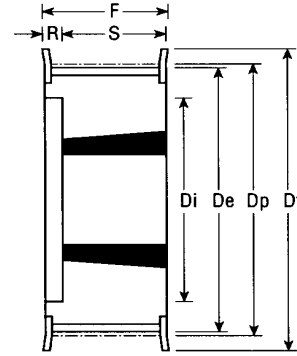


Fig 5F

Dimensions in mm

Part No.	Bushing	Teeth	Belt Width	Material	Figure	Dp	De	Df	Dm	Di	F	S	R	Wt. kg
TL22-8M-20	1008	22	20	GG	5F	56.02	54.65	60.0	—	41	28	22	6.0	0.24
TL22-8M-30	1008		30	GG	5F	56.02	54.65	60.0	—	41	38	22	16.0	0.29
TL24-8M-20	1108	24	20	GG	5F	61.12	59.75	66.0	—	42	28	22	6.0	0.30
TL24-8M-30	1108		30	GG	5F	61.12	59.75	66.0	—	42	38	22	16.0	0.38
TL26-8M-20	1108	26	20	GG	5F	66.21	64.84	71.0	—	46	28	22	6.0	0.36
TL26-8M30	1108		30	GG	5F	66.21	64.84	71.0	—	46	38	22	16.0	0.45
TL28-8M-20	1108	28	20	GG	5F	71.30	70.08	75.0	—	50	28	22	6.0	0.44
TL28-8M-30	1210		30	ST	5F	71.30	70.08	75.0	—	50	38	25	13.0	0.50
TL28-8M-50	1210		50	ST	5F	71.30	70.08	75.0	—	50	60	25	35.0	0.60
TL30-8M-20	1108	30	20	GG	5F	76.39	75.13	83.0	—	58	28	22	6.0	0.53
TL30-8M-30	1615		30	ST	3F	76.39	75.13	83.0	—	—	38	38	—	0.55
TL30-8M-50	1615		50	ST	5F	76.39	75.13	83.0	—	58	60	38	22.0	0.65
TL32-8M-20	1610	32	20	GG	5F	81.49	80.16	87.0	—	62	28	25	3.0	0.42
TL32-8M-30	1615		30	GG	3F	81.49	80.16	87.0	—	—	38	38	—	0.59
TL32-8M-50	1615		50	GG	5F	81.49	80.16	87.0	—	62	60	38	22.0	0.82
TL34-8M-20	1610	34	20	GG	5F	86.58	85.79	91.0	—	65	28	25	3.0	0.55
TL34-8M-30	1615		30	GG	3F	86.58	85.22	91.0	—	—	38	38	—	0.77
TL34-8M-50	1615		50	GG	5F	86.58	85.22	91.0	—	65	60	38	22.0	1.06
TL34-8M-85	1615		85	GG	4F	86.58	85.22	91.0	—	65	95	38	28.5	1.43
TL36-8M-20	1610	36	20	GG	5F	91.67	90.30	98.5	—	68	28	25	3.0	0.68
TL36-8M-30	1615		30	GG	3F	91.67	90.30	98.5	—	—	38	38	—	0.96
TL36-8M-50	1615		50	GG	5F	91.67	90.30	98.5	—	68	60	38	22.0	1.30
TL36-8M-85	1615		85	GG	4F	91.67	90.30	98.5	—	68	95	38	28.5	1.87
TL38-8M-20	1610	38	20	GG	5F	96.77	95.39	103.0	—	72	28	25	3.0	0.80
TL38-8M-30	1615		30	GG	3F	96.77	95.39	103.0	—	—	38	38	—	1.15
TL38-8M-50	1615		50	GG	3F	96.77	95.39	103.0	—	72	60	38	22.0	1.60
TL38-8M-85	1615		85	GG	4F	96.77	95.39	103.0	—	72	95	38	28.5	2.20

Note: GG = Cast Iron. ST = Steel.

8M HTD® Pulleys - Taper Bushed



8 mm HTD® x 20, 30, 50, and 85 mm Belt Widths

Part No. TL48-8M-50

Where: TL = Taper Bushed Version

48 = No. of Teeth

8M = Pitch (5, 8 and 14mm)

50 = Width of belt (20, 30, 50 and 85)

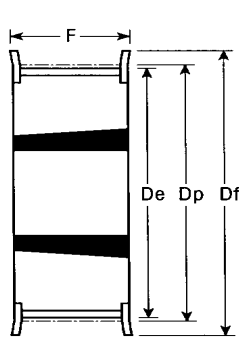


Fig 3F

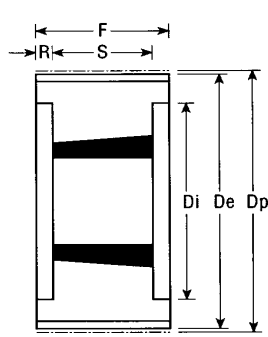


Fig 4F

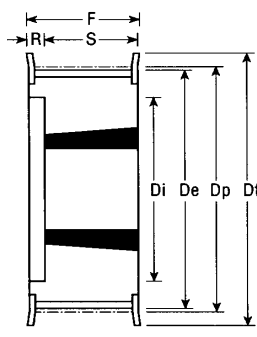


Fig 5F

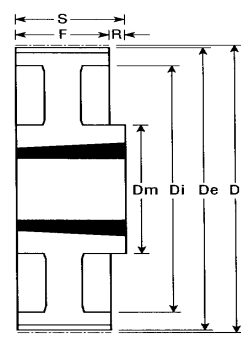


Fig 8F

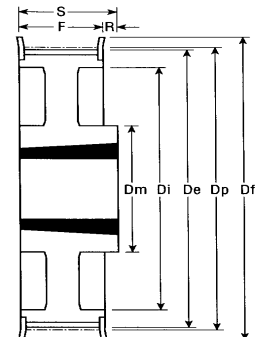


Fig 8WF

Dimensions in mm

Part No.	Bushing	Teeth	Belt Width	Material	Figure	Dp	De	Df	Dm	Di	F	S	R	Wt. kg
TL40-8M-20	1610	40	20	GG	5F	101.86	100.49	106.0	—	76	28	25	3.0	1.00
TL40-8M-30	1615		30	GG	3F	101.86	100.49	106.0	—	—	38	38	—	1.34
TL40-8M-50	2012		50	GG	4F	101.86	100.49	106.0	—	82	60	32	14.0	1.71
TL40-8M-85	2012		85	GG	4F	101.86	100.49	106.0	—	82	95	32	31.5	1.80
TL44-8M-20	2012	44	20	GG	8F	112.05	110.67	119.0	93	—	28	32	4.0	1.20
TL44-8M-30	2012		30	GG	4F	112.05	110.67	119.0	—	91	38	32	3.0	1.33
TL44-8M-50	2012		50	GG	4F	112.05	110.67	119.0	—	91	60	32	14.0	1.78
TL44-8M-85	2012		85	GG	4F	112.05	110.67	119.0	—	91	95	32	31.5	2.30
TL48-8M-20	2012	48	20	GG	8F	122.23	120.86	127.0	96	—	28	32	4.0	1.60
TL48-8M-30	2012		30	GG	4F	122.23	120.86	127.0	—	95	38	32	3.0	1.78
TL48-8M-50	2012		50	GG	4F	122.23	120.86	127.0	—	96	60	32	14.0	2.30
TL48-8M-85	2517		85	GG	4F	122.23	120.86	127.0	—	100	95	45	25.0	2.66
TL56-8M-20	2012	56	20	GG	8F	142.60	141.23	148.0	110	—	28	32	4.0	2.40
TL56-8M-30	2012		30	GG	4F	142.60	141.23	148.0	—	117	38	32	3.0	3.76
TL56-8M-50	2517		50	GG	4F	142.60	141.23	148.0	—	116	60	45	7.5	3.40
TL56-8M-85	2517		85	GG	4F	142.60	141.23	148.0	—	117	95	45	25.0	4.45
TL64-8M-20	2012	64	20	GG	8WF	162.97	161.60	168.0	110	137	28	32	4.0	2.70
TL64-8M-30	2517		30	GG	8F	162.97	161.60	168.0	125	—	38	45	7.0	4.20
TL64-8M-50	2517		50	GG	4F	162.97	161.60	168.0	—	137	60	45	7.5	5.00
TL64-8M-85	2517		85	GG	4F	162.97	161.60	168.0	—	137	95	45	25.0	6.20

Note: GG = Cast Iron.

8M HTD® Pulleys - Taper Bushed



8 mm HTD® x 20, 30, 50 and 85 mm Belt Widths

Part No. TL80-8M-20

Where: TL = Taper Bushed Version
 80 = No. of Teeth
 8M = Pitch (5, 8 and 14mm)
 20 = Width of belt (20, 30, 50 and 85)

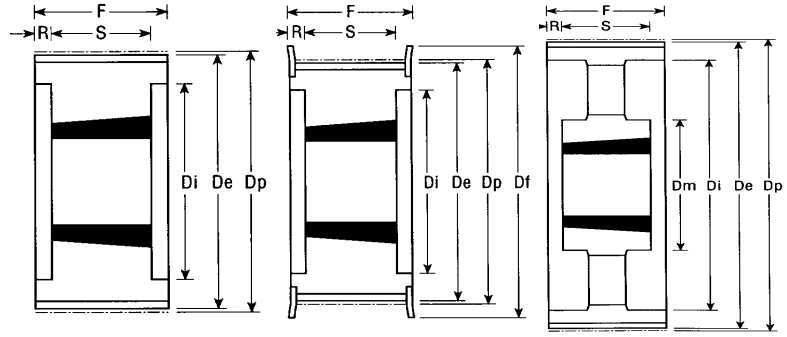


Fig 4

Fig 4F

Fig 9A

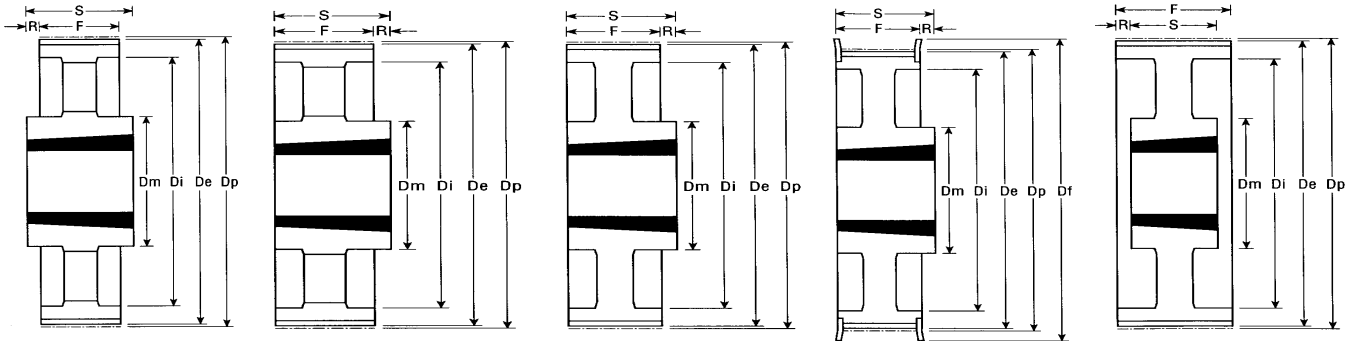


Fig 7A

Fig 8A

Fig 8W

Fig 8WF

Fig 9W

Dimensions in mm

Part No.	Bushing	Teeth	Belt Width	Material	Figure	Dp	De	Df	Dm	Di	F	S	R	Wt. kg
TL72-8M-20	2012	72	20	GG	8WF	183.35	181.97	192.0	110	158	28	32	4.0	3.30
TL72-8M-30	2517		30	GG	8WF	183.35	181.97	192.0	125	158	38	45	7.0	4.30
TL72-8M-50	2517		50	GG	4F	183.35	181.97	192.0	125	158	60	45	7.5	6.70
TL72-8M-85	3020		85	GG	4F	183.35	181.97	192.0	—	158	95	51	22.0	8.00
TL80-8M-20	2012	80	20	GG	8W	203.72	202.35	—	110	180	28	32	4.0	3.50
TL80-8M-30	2517		30	GG	8W	203.72	202.35	—	125	180	38	45	7.0	4.60
TL80-8M-50	3020		50	GG	4	203.72	202.35	—	—	180	60	51	4.5	8.80
TL80-8M-85	3020		85	GG	4	203.72	202.35	—	—	180	95	51	22.0	10.00
TL90-8M-20	2012	90	20	GG	8A	229.18	227.81	—	110	204	28	32	4.0	3.65
TL90-8M-30	2517		30	GG	8A	229.18	227.81	—	125	204	38	45	7.0	5.00
TL90-8M-50	3020		50	GG	9W	229.18	227.81	—	170	204	60	51	4.5	10.00
TL90-8M-85	3020		85	GG	9W	229.18	227.81	—	170	204	95	51	22.0	10.80
TL112-8M-30	2517	112	30	GG	8A	285.21	283.83	—	125	260	38	45	7.0	6.20
TL112-8M-50	3020		50	GG	9W	285.21	283.83	—	170	260	60	51	4.5	12.00
TL112-8M-85	3020		85	GG	9W	285.21	283.83	—	170	260	95	51	22.0	15.00
TL144-8M-30	2517	144	30	GG	8A	366.69	365.32	—	125	341	38	45	7.0	9.00
TL144-8M-50	3020		50	GG	9A	366.69	365.32	—	170	341	60	51	4.5	15.20
TL144-8M-85	3525		85	GG	9A	366.69	365.32	—	190	341	95	65	15.0	20.00
TL168-8M-50	3525	168	50	GG	7A	427.81	426.44	—	190	402	60	65	2.5	16.40
TL168-8M-85	3525		85	GG	9A	427.81	426.44	—	190	402	95	65	15.0	23.00
TL192-8M-50	3525	192	50	GG	7A	488.92	487.55	—	190	460	60	65	2.5	21.80
TL192-8M-85	3525		85	GG	9A	488.92	487.55	—	190	460	95	65	15.0	28.50

Note: GG = Cast Iron.

14M HTD® Pulleys - Taper Bushed



14 mm HTD® x 40, 55, 85, 115 and 170 mm Belt Widths

Part No. TL36-14M-40

Where: TL = Taper Bushed Version
 36 = No. of Teeth
 14M = Pitch (5, 8 and 14mm)
 40 = Width of belt (40, 55, 85, 115, 170)

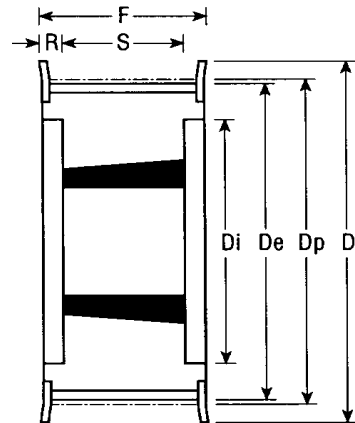


Fig 4F

Dimensions in mm

Part No.	Bushing	Teeth	Belt Width	Material	Figure	Dp	De	Df	Dm	Di	F	S	R	Wt. kg
TL28-14M-40	2012	28	40	GG	4F	124.78	122.12	127	—	98	54	32	11.0	2.07
TL28-14M-55	2012		55	GG	4F	124.78	122.12	127	—	98	70	32	19.0	2.20
TL28-14M-85*	2517		85	GG	4F	124.78	122.12	127	—	98	102	45	28.5	2.70
TL28-14M-115*	2517		115	GG	4F	124.78	122.12	127	—	98	133	45	44.0	3.77
TL29-14M-40	2012	29	40	GG	4F	129.23	126.57	138	—	100	54	32	11.0	2.38
TL29-14M-55	2012		55	GG	4F	129.23	126.57	138	—	100	70	32	19.0	2.74
TL29-14M-85*	2517		85	GG	4F	129.23	126.57	138	—	100	102	45	28.5	3.40
TL29-14M-115*	2517		115	GG	4F	129.23	126.57	138	—	100	133	45	44.0	4.00
TL30-14M-40	2012	30	40	GG	4F	133.69	130.99	138	—	100	54	32	11.0	2.65
TL30-14M-55*	2517		55	GG	4F	133.69	130.99	138	—	100	70	45	12.5	2.70
TL30-14M-85*	2517		85	GG	4F	133.69	130.99	138	—	100	102	45	28.5	3.75
TL30-14M-115*	2517		115	GG	4F	133.69	130.99	138	—	100	133	45	44.0	5.00
TL32-14M-40	2012	32	40	GG	4F	142.60	139.88	154	—	104	54	32	11.0	3.40
TL32-14M-55*	2517		55	GG	4F	142.60	139.88	154	—	108	70	45	12.5	3.66
TL32-14M-85*	2517		85	GG	4F	142.60	139.88	154	—	108	102	45	28.5	4.80
TL32-14M-115*	2517		115	GG	4F	142.60	139.88	154	—	108	133	45	44.0	6.80
TL34-14M-40*	2517	34	40	GG	4F	151.52	148.79	160	—	110	54	45	4.5	3.87
TL34-14M-55*	2517		55	GG	4F	151.52	148.79	160	—	110	70	45	12.5	4.55
TL34-14M-85*	2517		85	GG	4F	151.52	148.79	160	—	110	102	45	28.5	6.00
TL34-14M-115*	2517		115	GG	4F	151.52	148.79	160	—	110	133	45	44.0	6.80
TL36-14M-40*	2517	36	40	GG	4F	160.43	157.68	168	—	120	54	45	4.5	4.80
TL36-14M-55*	2517		55	GG	4F	160.43	157.68	168	—	120	70	45	12.5	5.20
TL36-14M-85	3020		85	GG	4F	160.43	157.68	168	—	125	102	51	25.5	5.80
TL36-14M-115	3020		115	GG	4F	160.43	157.68	168	—	125	133	51	41.0	7.00
TL38-14M-40*	2517	38	40	GG	4F	169.34	166.60	183	—	130	54	45	4.5	5.40
TL38-14M-55*	2517		55	GG	4F	169.34	166.60	183	—	130	70	45	12.5	6.20
TL38-14M-85	3020		85	GG	4F	169.34	166.60	183	—	130	102	51	25.5	6.80
TL38-14M-115	3020		115	GG	4F	169.34	166.60	183	—	130	133	51	41.0	8.40
TL38-14M-170	3030		170	GG	4F	169.34	166.60	183	—	130	187	76	55.5	11.70
TL40-14M-40*	2517	40	40	GG	4F	178.25	175.49	188	—	138	54	45	4.5	6.00
TL40-14M-55*	2517		55	GG	4F	178.25	175.49	188	—	138	70	45	12.5	7.00
TL40-14M-85	3020		85	GG	4F	178.25	175.49	188	—	138	102	51	25.5	8.00
TL40-14M-115	3020		115	GG	4F	178.25	175.49	188	—	140	133	51	41.0	9.20
TL40-14M-170	3030		170	GG	4F	178.25	175.49	188	—	140	187	76	55.5	13.00

Note: GG = Cast Iron. * Requires TL Bushing with BSW screws.

14M HTD® Pulleys - Taper Bushed



14 mm HTD® x 40, 55, 85, 115 and 170 mm Belt Width



Part No. TL48-14M-115

Where: TL = Taper Bushed Version
 48 = No. of Teeth
 14M = Pitch (5, 8 and 14mm)
 115 = Width of belt (40, 55, 85, 115, 170)

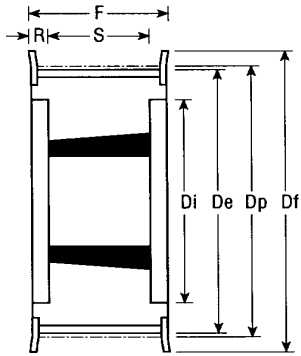


Fig 4F

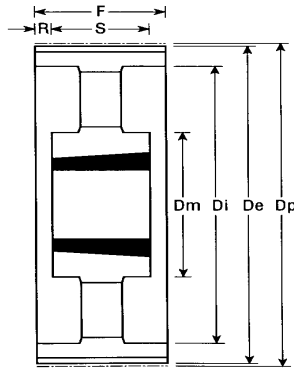


Fig 9A

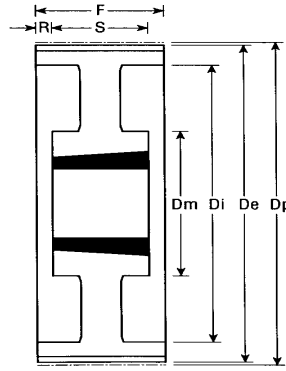


Fig 9W

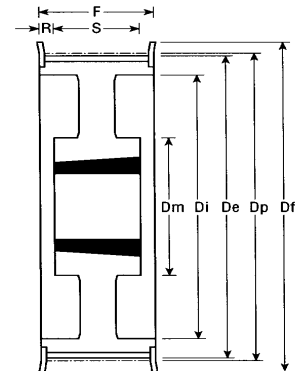


Fig 4WF/9WF

Dimensions in mm

Part No.	Bushing	Teeth	Belt Width	Material	Figure	Dp	De	Df	Dm	Di	F	S	R	Wt. kg
TL44-14M-40	3020	44	40	GG	4F	196.08	193.28	211	—	155	54	51	1.5	7.80
TL44-14M-55	3020		55	GG	4F	196.08	193.28	211	—	155	70	51	9.5	8.60
TL44-14M-85	3030		85	GG	4F	196.08	193.28	211	—	155	102	76	13.0	11.80
TL44-14M-115	3030		115	GG	4F	196.08	193.28	211	—	155	133	76	28.5	14.00
TL44-14M-170*	3535		170	GG	4F	196.08	193.28	211	—	155	187	89	49.0	15.00
TL48-14M-40	3020	48	40	GG	4F	213.90	211.11	226	—	170	54	51	1.5	9.40
TL48-14M-55	3020		55	GG	4F	213.90	211.11	226	—	170	70	51	9.5	10.40
TL48-14M-85	3030		85	GG	4F	213.90	211.11	226	—	170	102	76	13.0	15.10
TL48-14M-115	3030		115	GG	4F	213.90	211.11	226	—	170	133	76	28.5	17.10
TL48-14M-170*	3535		170	GG	4F	213.90	211.11	226	—	175	187	89	49.0	19.00
TL56-14M-40	3020	56	40	GG	9WF	249.55	246.76	256	170	208	54	51	1.5	10.80
TL56-14M-55	3020		55	GG	9WF	249.55	246.76	256	170	208	70	51	9.5	12.00
TL56-14M-85*	3525		85	GG	4F	249.55	246.76	256	190	210	102	65	18.5	19.00
TL56-14M-115*	3535		115	GG	4F	249.55	246.76	256	—	210	133	89	22.0	24.80
TL56-14M-170*	3535		170	GG	4F	249.55	246.76	256	—	210	187	89	49.0	28.50
TL64-14M-40	3020	64	40	GG	9WF	285.21	282.41	296	170	242	54	51	1.5	13.40
TL64-14M-55	3020		55	GG	9WF	285.21	282.41	296	170	242	70	51	9.5	14.50
TL64-14M-85*	3525		85	GG	9WF	285.21	282.41	296	190	242	102	65	18.5	23.00
TL64-14M-115*	3535		115	GG	9WF	285.21	282.41	296	190	242	133	89	22.0	27.00
TL64-14M-170	4040		170	GG	4F	285.21	282.41	296	—	240	187	102	42.5	41.00
TL72-14M-40	3020	72	40	GG	9W	320.86	318.06	—	170	280	54	51	1.5	15.20
TL72-14M-55	3020		55	GG	9W	320.86	318.06	—	170	280	70	51	9.5	16.20
TL72-14M-85*	3525		85	GG	9W	320.86	318.06	—	190	280	102	65	18.5	25.00
TL72-14M-115*	3535		115	GG	9W	320.86	318.06	—	190	280	133	89	22.0	29.00
TL72-14M-170	4040		170	GG	9W	320.86	318.06	—	230	280	187	102	42.5	46.90
TL80-14M-40	3020	80	40	GG	9A	356.51	353.71	—	170	315	54	51	1.5	16.00
TL80-14M-55	3020		55	GG	9A	356.51	353.71	—	170	315	70	51	9.5	17.50
TL80-14M-85*	3525		85	GG	9A	356.51	353.71	—	190	315	102	65	18.5	26.00
TL80-14M-115*	3535		115	GG	9A	356.51	353.71	—	190	315	133	89	22.0	32.00
TL80-14M-170	4040		170	GG	9W	356.51	353.71	—	230	315	187	102	42.5	48.00

Note: GG = Cast Iron. * Requires TL Bushing with BSW screws.

14M HTD® Pulleys - Taper Bushed



14 mm HTD® x 40, 55, 85, 115 and 170 mm Belt Widths



Part No. TL144-14M-40

Where: TL = Taper Bushed Version

144 = No. of Teeth

14M = Pitch (5, 8 and 14mm)

40 = Width of belt (40, 55, 85, 115, 170)

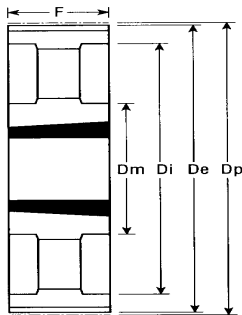


Fig 3A

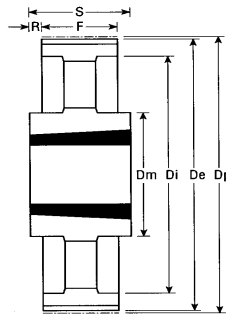


Fig 7A

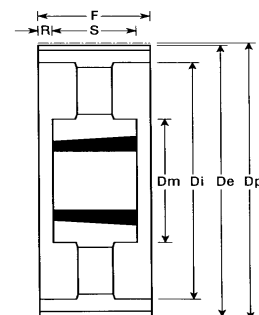


Fig 9A

Dimensions in mm

Part No.	Bushing	Teeth	Belt Width	Material	Figure	Dp	De	Df	Dm	Di	F	S	R	Wt. kg
TL90-14M-40	3020	90	40	GG	9A	401.07	398.28	—	170	360	54	51	1.5	17.80
TL90-14M-55	3020		55	GG	9A	401.07	398.28	—	170	360	70	51	9.5	20.10
TL90-14M-85	3525		85	GG	9A	401.07	398.28	—	190	360	102	65	18.5	27.80
TL90-14M-115	3535		115	GG	9A	401.07	398.28	—	190	360	133	89	22.0	36.50
TL90-14M-170	4040		170	GG	9A	401.07	398.28	—	230	360	187	102	42.5	52.50
TL112-14M-40	3020	112	40	GG	9A	499.11	496.32	—	170	457	54	51	1.5	25.60
TL112-14M-55	3020		55	GG	9A	499.11	496.32	—	170	457	70	51	9.5	28.40
TL112-14M-85	3525		85	GG	9A	499.11	496.32	—	190	457	102	65	18.5	36.50
TL112-14M-115	3535		115	GG	9A	499.11	496.32	—	190	457	133	89	22.0	46.00
TL112-14M-170	5050		170	GG	9A	499.11	496.32	—	265	456	187	127	30.0	74.50
TL144-14M-40	3020	144	40	GG	9A	641.71	638.92	—	170	600	54	51	1.5	32.00
TL144-14M-55	3020		55	GG	9A	641.71	638.92	—	170	600	70	51	9.5	36.20
TL144-14M-85	3525		85	GG	9A	641.71	638.92	—	190	600	102	65	18.5	48.00
TL144-14M-115	4040		115	GG	9A	641.71	638.92	—	230	600	133	102	15.5	68.00
TL144-14M-170	5050		170	GG	9A	641.71	638.92	—	265	600	187	127	30.0	91.00
TL168-14M-40	3020	168	40	GG	9A	748.66	745.87	—	170	706	54	51	1.5	44.00
TL168-14M-55	3020		55	GG	9A	748.66	745.87	—	170	706	70	51	9.5	49.00
TL168-14M-85	3525		85	GG	9A	748.66	745.87	—	190	706	102	65	18.5	60.00
TL168-14M-115	4040		115	GG	9A	748.66	745.87	—	230	706	133	102	15.5	82.60
TL168-14M-170	5050		170	GG	9A	748.66	745.87	—	265	706	187	127	30.0	116.0
TL192-14M-40	3020	192	40	GG	9A	855.62	852.82	—	170	813	54	51	1.5	49.00
TL192-14M-55	3020		55	GG	9A	855.62	852.82	—	170	813	70	51	9.5	53.00
TL192-14M-85	4040		85	GG	3A	855.62	852.82	—	230	813	102	102	—	86.00
TL192-14M-115	4040		115	GG	9A	855.62	852.82	—	230	813	133	102	15.5	96.00
TL192-14M-170	5050		170	GG	9A	855.62	852.82	—	265	813	187	127	30.0	134.0
TL216-14M-40	3020	216	40	GG	9A	962.57	959.76	—	170	920	54	51	1.5	55.00
TL216-14M-55	3535		55	GG	7A	962.57	959.76	—	190	920	70	89	9.5	65.80
TL216-14M-85	4040		85	GG	3A	962.57	959.76	—	230	920	102	102	—	91.50
TL216-14M-115	4040		115	GG	9A	962.57	959.76	—	230	920	133	102	15.5	107.00
TL216-14M-170	5050		170	GG	9A	962.57	959.76	—	265	920	187	127	30.0	146.50

Note: GG = Cast Iron.

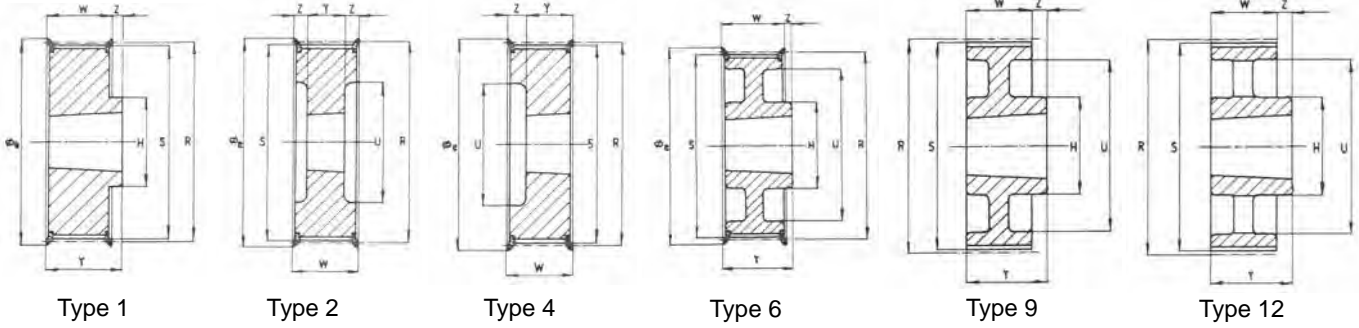
Super Torque Timing Pulley Taper Bushed



Pitch 8 mm

Part No: B22S8M20

- B = Taper Bushed Version
- 22 = Number of Teeth
- S8 = Pitch (8 or 14mm)
- M20 = Width of Belt (20,30,50,85mm)



20 mm Belt Width

Part No.	Taper Bushing	Teeth	Type	R mm	S mm	E mm	U mm	W mm	H mm	Z mm	Y mm	Wt. kg
B22S8M20	1008	22	4	56.02	54.65	62	38	28	—	6	22	0.25
B24S8M20	1108	24	4	61.12	59.74	67	42	28	—	6	22	0.30
B26S8M20	1108	26	4	66.21	64.84	73	45	28	—	6	22	0.36
B28S8M20	1108	28	4	71.30	69.93	77	52	28	—	6	22	0.44
B30S8M20	1108	30	4	76.39	75.02	84	56	28	—	6	22	0.53
B32S8M20	1610	32	4	81.49	80.12	88	65	28	—	3	25	0.42
B34S8M20	1610	34	4	86.58	85.21	94	66	28	—	3	25	0.55
B36S8M20	1610	36	4	91.67	90.30	98	68	28	—	3	25	0.68
B38S8M20	1610	38	4	96.77	95.39	104	76	28	—	3	25	0.80
B40S8M20	1610	40	4	101.86	100.49	108	80	28	—	3	25	1.00
B44S8M20	2012	44	1	112.05	110.67	121	—	28	99	4	32	1.20
B48S8M20	2012	48	1	122.23	120.86	129	—	28	105	4	32	1.60
B56S8M20	2012	56	1	142.60	141.23	149	—	28	105	4	32	2.40
B64S8M20	2012	64	6	162.97	161.60	168	140	28	110	4	32	2.70
B72S8M20	2012	72	6	183.35	181.97	191	158	28	110	4	32	3.30
B80S8M20*	2012	80	9	203.72	202.35	—	178	28	110	4	32	3.50
B90S8M20*	2012	90	12	229.18	227.81	—	204	28	110	4	32	3.65

30 mm Belt Width

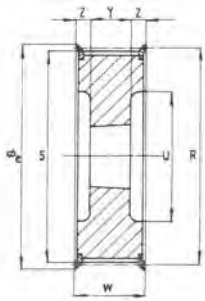
Part No.	Taper Bushing	Teeth	Type	R mm	S mm	E mm	U mm	W mm	H mm	Z mm	Y mm	Wt. kg
B22S8M30	1008	22	4	56.02	54.65	62	38	38	—	16	22	0.31
B24S8M30	1108	24	4	61.12	59.74	67	42	38	—	16	22	0.38
B26S8M30	1108	26	4	66.21	64.84	73	45	38	—	16	22	0.45
B28S8M30	1108	28	4	71.30	69.93	77	52	38	—	16	22	0.50
B30S8M30	1615	30	8	76.39	75.02	84	—	38	—	—	38	0.55
B32S8M30	1615	32	8	81.49	80.12	88	—	38	—	—	38	0.59
B34S8M30	1615	34	8	86.58	85.21	94	—	38	—	—	38	0.77
B36S8M30	1615	36	8	91.67	90.30	98	—	38	—	—	38	0.96
B38S8M30	1615	38	8	96.77	95.39	104	—	38	—	—	38	1.15
B40S8M30	1615	40	8	101.86	100.49	108	—	38	—	—	38	1.34
B44S8M30	2012	44	2	112.05	110.67	121	90	38	—	—	32	1.33
B48S8M30	2012	48	2	122.23	120.86	129	98	38	—	3	32	1.78
B56S8M30	2012	56	2	142.60	141.23	149	118	38	—	3	32	3.76
B64S8M30*	2517	64	6	162.97	161.60	168	140	38	115	3	45	4.20
B72S8M30*	2517	72	6	183.35	181.97	191	158	38	120	7	45	4.30
B80S8M30*	2517	80	9	203.72	202.35	—	178	38	120	7	45	4.60
B90S8M30*	2517	90	12	229.18	227.81	—	204	38	120	7	45	5.00
B112S8M30*	2517	112	12	285.21	283.83	—	260	38	120	7	45	6.20
B144S8M30*	2517	144	12	366.69	365.32	—	341	38	120	7	45	9.00

Note: * Parts are Cast Iron, manufactured to ISO 5294, DIN 7721. Bushing sold separately. Requires TL Bushing with BSW threads.

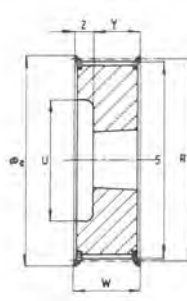
Super Torque Timing Pulley Taper Bushed



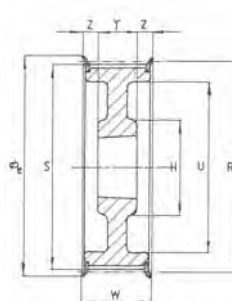
Pitch 8 mm



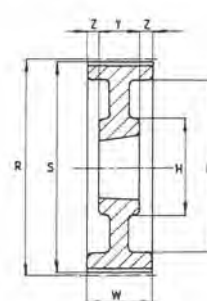
Type 2



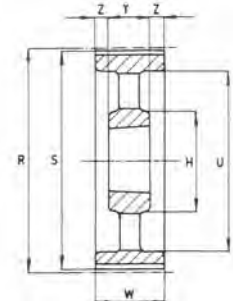
Type 4



Type 5



Type 7



Type 14

50 mm Belt Width

Part No.	Taper Bushing	Teeth	Type	R mm	S mm	E mm	U mm	W mm	H mm	Z mm	Y mm	Wt. kg
B28S8M50	1108	28	2	71.30	69.93	77	52	60	—	19	22	0.60
B30S8M50	1615	30	4	76.39	75.02	84	58	60	—	22	38	0.65
B32S8M50	1615	32	4	81.94	80.12	88	60	60	—	22	38	0.82
B34S8M50	1615	34	4	86.58	85.21	94	66	60	—	22	38	1.06
B36S8M50	1615	36	4	91.67	90.30	98	68	60	—	22	38	1.30
B38S8M50	1615	38	4	96.77	95.39	104	75	60	—	22	38	1.60
B40S8M50	2012	40	2	101.86	100.49	108	80	60	—	14	32	1.71
B44S8M50	2012	44	2	112.05	110.67	121	90	60	—	14	32	1.78
B48S8M50	2012	48	2	122.23	120.86	129	100	60	—	14	32	2.30
B56S8M50	2517*	56	2	142.60	141.23	149	120	60	—	7.5	45	3.40
B64S8M50	2517*	64	5	162.97	161.60	168	138	60	115	7.5	45	5.00
B72S8M50	2517*	72	5	183.35	181.97	191	158	60	120	7.5	45	6.70
B80S8M50	3020	80	7	203.72	202.35	—	178	60	140	4.5	51	8.80
B90S8M50*	3020	90	7	229.18	227.81	—	204	60	146	4.5	51	10.00
B112S8M50*	3020	112	14	285.21	283.83	—	260	60	146	4.5	51	12.00
B144S8M50*	3020	114	14	366.69	365.32	—	341	60	146	4.5	51	15.20
B168S8M50*	3020	168	14	427.80	426.42	—	402	60	146	4.5	51	17.50
B192S8M50*	3020	192	14	488.92	487.54	—	462	60	146	4.5	51	24.00

85 mm Belt Width

Part No.	Taper Bushing	Teeth	Type	R mm	S mm	E mm	U mm	W mm	H mm	Z mm	Y mm	Wt. kg
B34S8M85	1615	34	2	86.58	85.21	94	66	95	—	28.5	38	1.43
B36S8M85	1615	36	2	91.67	90.30	98	68	95	—	28.5	38	1.87
B38S8M85	1615	38	2	96.77	95.39	104	75	95	—	28.5	38	2.20
B40S8M85	2012	40	2	101.86	100.49	108	80	95	—	31.5	32	1.80
B44S8M85	2012	44	2	112.05	110.67	121	90	95	—	31.5	32	2.30
B48S8M85	2517*	48	2	122.23	120.86	129	100	95	—	25	45	2.66
B56S8M85	2517*	56	2	142.60	141.23	149	120	95	—	25	45	4.45
B64S8M85	2517*	64	2	162.97	161.60	168	138	95	—	25	45	6.20
B72S8M85	3020	72	2	183.35	181.97	191	158	95	—	22	51	8.00
B80S8M85*	3020	80	7	203.72	202.35	—	178	95	140	22	51	10.00
B90S8M85	3020	90	7	229.18	227.81	—	204	95	146	22	51	10.80
B112S8M85*	3020	112	14	285.21	283.83	—	260	95	146	22	51	15.00
B144S8M85*	3030	144	14	366.69	365.32	—	341	95	140	9.5	76	20.00
B168S8M85*	3030	168	14	427.80	426.42	—	402	95	140	9.5	76	22.00
B192S8M85*	3030	192	14	488.92	487.54	—	462	95	140	9.5	76	26.00

Note: * Indicates without Flanges. Parts are Cast Iron, manufactured to ISO 5294, DIN 7721. Bushing sold separately.

- Requires TL Bushings with BSW threads.

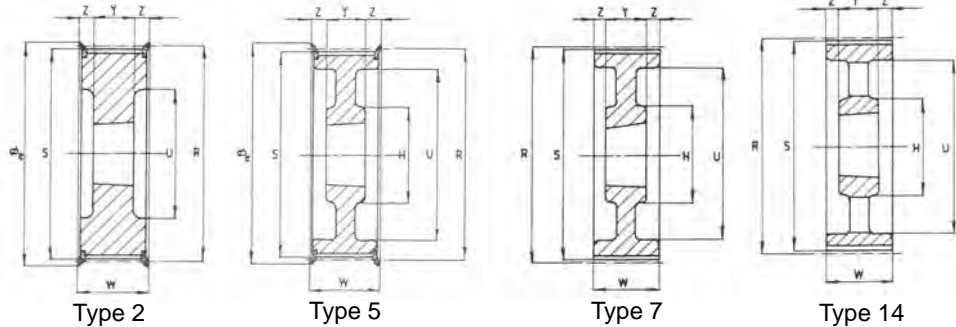
Super Torque Timing Pulley Taper Bushed



Pitch 14 mm

Part No: B38S14M40

- B = Taper Bushed Version
- 38 = Number of Teeth
- S14 = Pitch (8 or 14mm)
- M40 = Width of Belt (40,55,85,115,170mm)



40 mm Belt Width

Part No.	Taper Bushing	Teeth	Type	R mm	S mm	E mm	U mm	W mm	H mm	Z mm	Y mm	Wt kg
B28S14M40	2012	28	2	124.78	121.98	134	98	54	—	11	32	2.07
B29S14M40	2012	29	2	129.23	126.44	134	100	54	—	11	32	2.38
B30S14M40	2012	30	2	133.69	130.90	142	100	54	—	11	32	2.65
B32S14M40	2012	32	2	142.60	139.81	150	104	54	—	11	32	3.40
B34S14M40	2517•	34	2	151.51	148.72	158	110	54	—	4.5	45	3.78
B36S14M40	2517•	36	2	160.43	157.63	166	120	54	—	4.5	45	4.80
B38S14M40	2517•	38	2	169.34	166.55	177	130	54	—	4.5	45	5.40
B40S14M40	2517•	40	2	178.25	175.46	186	138	54	—	4.5	45	6.00
B44S14M40	3020	44	2	196.08	193.28	209	154	54	—	1.5	51	7.80
B48S14M40	3020	48	2	213.90	211.11	216	172	54	—	1.5	51	9.40
B56S14M40	3020	56	5	249.56	246.76	261	207	54	146	1.5	51	10.80
B64S14M40	3020	64	5	285.21	282.41	288	243	54	146	1.5	51	13.40
B72S14M40*	3020	72	7	320.86	318.06	—	279	54	146	1.5	51	15.20
B80S14M40*	3020	80	14	356.51	353.71	—	314	54	146	1.5	51	16.00
B90S14M40*	3020	90	14	401.07	398.28	—	359	54	146	1.5	51	17.80
B112S14M40*	3020	112	14	499.11	496.32	—	457	54	146	1.5	51	25.60
B144S14M40*	3020	144	14	641.71	638.92	—	600	54	146	1.5	51	32.00

55 mm Belt Width

Part No.	Taper Bushing	Teeth	Type	R mm	S mm	E mm	U mm	W mm	H mm	Z mm	Y mm	Wt kg
B28S14M55	2012	28	2	124.78	121.98	134	98	70	—	19	32	2.20
B29S14M55	2012	29	2	129.23	126.44	134	100	70	—	19	32	2.74
B30S14M55	2517•	30	2	133.69	130.90	142	100	70	—	12.5	45	2.70
B32S14M55	2517•	32	2	142.60	139.81	150	104	70	—	12.5	45	3.66
B34S14M55	2517•	34	2	151.51	148.72	158	110	70	—	12.5	45	4.55
B36S14M55	2517•	36	2	160.43	157.63	166	120	70	—	12.5	45	5.20
B38S14M55	2517•	38	2	169.34	166.55	177	130	70	—	12.5	45	6.20
B40S14M55	2517•	40	2	178.25	175.46	186	138	70	—	12.5	45	7.00
B44S14M55	3020	44	2	196.08	193.28	209	154	70	—	9.5	51	8.60
B48S14M55*	3020	48	2	213.90	211.11	216	172	70	—	9.5	51	10.40
B56S14M55	3020	56	5	249.56	246.76	261	207	70	146	9.5	51	12.40
B64S14M55*	3020	64	5	285.21	282.41	288	243	70	146	9.5	51	14.50
B72S14M55*	3020	72	7	320.86	318.06	—	279	70	146	9.5	51	16.20
B80S14M55*	3020	80	14	356.51	353.71	—	314	70	146	9.5	51	17.50
B90S14M55*	3020	90	14	401.07	398.28	—	359	70	146	9.5	51	20.10
B112S14M55	3020	112	14	499.11	496.32	—	457	70	146	9.5	51	28.40
B144S14M55	3020	144	14	641.71	638.92	—	600	70	146	9.5	51	36.20

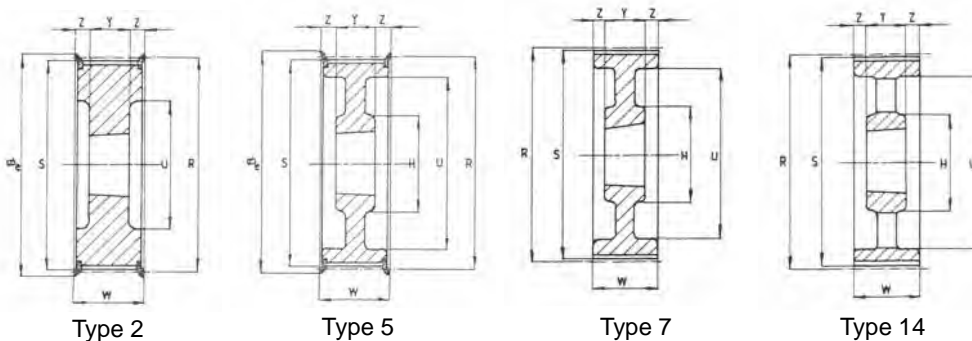
Note: * Indicates without Flanges. Parts are Cast Iron, manufactured to ISO 5294, DIN 7721. Bushing sold separately.

- Requires TL Bushings with BSW threads.

Super Torque Timing Pulley Taper Bushed



Pitch 14 mm



85 mm Belt Width

Part No.	Taper Bushing	Teeth	Type	R mm	S mm	E mm	U mm	W mm	H mm	Z mm	Y mm	Wt. kg
B28S14M85*	2517	28	2	124.78	121.98	134	98	102	—	28.5	45	2.70
B29S14M85*	2517	29	2	129.23	126.44	134	100	102	—	28.5	45	3.40
B30S14M85*	2517	30	2	133.69	130.90	142	100	102	—	28.5	45	3.75
B32S14M85*	2517	32	2	142.60	139.81	150	104	102	—	28.5	45	4.80
B34S14M85*	2517	34	2	151.51	148.72	158	110	102	—	28.5	45	5.80
B36S14M85	3020	36	2	160.43	157.63	166	120	102	—	25.5	51	6.00
B38S14M85	3020	38	2	169.34	166.55	177	130	102	—	25.5	51	6.80
B40S14M85	3020	40	2	178.25	175.46	186	138	102	—	25.5	51	8.00
B44S14M85	3030	44	2	196.08	193.28	209	154	102	—	13	76	11.80
B48S14M85	3030	48	2	213.90	211.11	216	172	102	—	13	76	15.10
B56S14M85*	3535	56	2	249.56	246.76	261	207	102	—	6.5	89	19.00
B64S14M85*	3535	64	5	285.21	282.41	288	243	102	178	6.5	89	23.00
B72S14M85*	3535	72	7	320.86	318.06	—	279	102	178	6.5	89	25.00
B80S14M85*	3535	80	14	356.51	353.71	—	314	102	178	6.5	89	26.00
B90S14M85*	3535	90	14	401.07	398.28	—	359	102	178	6.5	89	27.80
B112 S14M85*	3535	112	14	499.11	496.32	—	457	102	178	6.5	89	36.50
B144S14M85*	3535	144	14	641.71	638.92	—	600	102	178	6.5	89	48.00

115 mm Belt Width

Part No.	Taper Bushing	Teeth	Type	R mm	S mm	E mm	U mm	W mm	H mm	Z mm	Y mm	Wt. kg
B28S14M115*	2517	28	2	124.78	121.98	134	98	133	—	44	45	3.77
B29S14M115*	2517	29	2	129.23	126.44	134	100	133	—	44	45	4.00
B30S14M115*	2517	30	2	133.69	130.90	142	100	133	—	44	45	5.00
B32S14M115*	2517	32	2	142.60	139.81	150	104	133	—	44	45	5.80
B34S14M115*	2517	34	2	151.51	148.72	158	110	133	—	44	45	6.80
B36S14M115	3020	36	2	160.43	157.63	166	120	133	—	41	51	7.00
B38S14M115	3020	38	2	169.34	166.55	177	130	133	—	41	51	8.40
B40S14M115	3020	40	2	178.25	175.46	186	138	133	—	41	51	9.20
B44S14M115	3030	44	2	196.08	193.28	209	154	133	—	28.5	76	14.00
B48S14M115	3030	48	2	213.90	211.11	216	172	133	—	28.5	76	17.10
B56S14M115*	3535	56	5	249.56	246.76	261	207	133	—	22	89	24.80
B64S14M115*	3535	64	5	285.21	282.41	288	243	133	178	22	89	27.00
B72S14M115*	3535	72	7	320.86	318.06	—	279	133	178	22	89	29.00
B80S14M115*	3535	80	14	356.51	353.71	—	314	133	178	22	89	32.00
B90S14M115*	3535	90	14	401.07	398.28	—	359	133	178	22	89	36.50
B112 S14M115*	3535	112	14	499.11	496.32	—	457	133	178	22	89	46.00
B144S14M115	4040	144	14	641.71	638.92	—	600	133	215	15.5	102	68.00

170 mm Belt Width

Part No.	Taper Bushing	Teeth	Type	R mm	S mm	E mm	U mm	W mm	H mm	Z mm	Y mm	Wt. kg
B38S14M170	3030	38	2	169.34	166.55	177	130	187	—	55.5	76	11.70
B40S14M170	3030	40	2	178.25	175.46	186	138	187	—	55.5	76	13.00
B44S14M170*	3535	44	2	196.08	193.28	209	154	187	—	49	89	15.00
B48S14M170*	3535	48	2	213.90	211.11	216	172	187	—	49	89	19.00
B56S14M170*	3535	56	2	249.56	246.76	261	207	187	—	49	89	28.50
B64S14M170	4040	64	2	285.21	282.41	288	243	187	—	42.5	102	41.00
B72S14M170	4040	72	2	320.86	318.06	—	279	187	215	42.5	102	46.90
B80S14M170	4040	80	7	356.51	353.71	—	314	187	215	42.5	102	48.00
B90S14M170	4040	90	14	401.07	398.28	—	359	187	215	42.5	102	52.50
B112S14M170	5050	112	14	499.11	496.32	—	457	187	267	30	127	74.50
B144S14M170	5050	144	14	641.71	638.92	—	600	187	267	30	127	91.00

Note: * Parts are Cast Iron, manufactured to ISO 5294, DIN 7721. Bushing sold separately.

Requires TL Bushings with BSW threads