

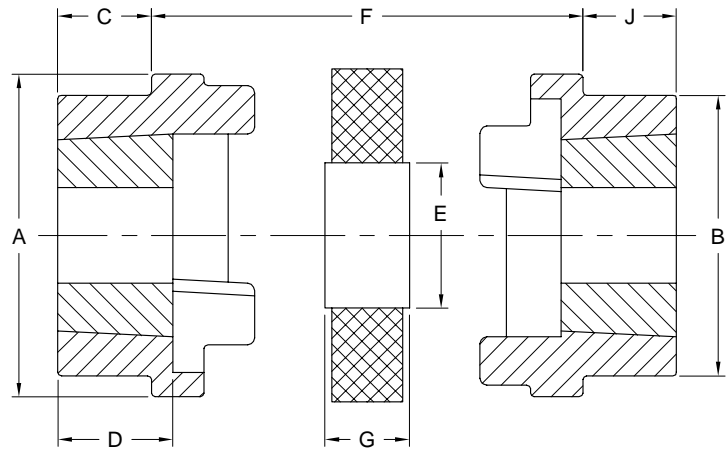
Flexible Shaft Couplings



HRC Series Jaw Type

Taper Bushed and Bored to Size

Metric and Inch Bores



F-Hub

Element

H-Hub

Ordering Note:

Specify 2 hubs (F or H Style), a rubber element and 2 bushings (inch or metric).

Bored to size requires no bushings.

F - Hubs allow the TL Bushing to be installed from the shaft-end.

H - Hubs allow the TL Bushing to be installed from the hub side.

Taper Bushed

Coupling Size	Element Part No.	F-Hub Part No.	H-Hub Part No.	Bush Size	Max Bore(in)	Max Bore(mm)	Dimensions (mm)								Wt.** kg
							A	B	C	D	E	F	G	J	
7	HRC7E	HRC7F	HRC7H	1008	1	25	69	60	20	24	31	25	18	29	1.0
9	HRC9E	HRC9F	HRC9H	1108	1-1/8	28	85	70	20	24	32	31	23	29	1.7
11	HRC11E	HRC11F	HRC11H	1610	1-5/8	42	112	100	19	27	45	45	29	38	4.2
13	HRC13E	HRC13F	HRC13H	1610	1-5/8	42	130	105	18	27	50	53	36	38	5.5
15	HRC15E	HRC15F	HRC15H	2012	2	50	150	115	24	34	62	60	40	42	7.1
18	HRC18E	HRC18F*	HRC18H*	2517	2-1/2	60	180	125	35	47	77	73	49	48	15.0
23	HRC23E	HRC23F	HRC23H	3020	3	75	225	155	40	53	99	86	60	55	26.0
28	HRC28E	HRC28F	HRC28H	3020	4	90	275	206	51	67	119	106	75	67	50.0

Note: See chart on next page for stock metric and inch shaft sizes. * Hubs require 2517 Bushing with BSW Threads

** Complete coupling weight.

Bored to Size

Coupling Size	Element Part No.	Hub Part No.	Max Bore(in)	Max Bore(mm)	Dimensions (mm)							Wt.** kg
					A	B	C	D	E	F	G	
7	HRC7E	HRC7B	1-1/4	32	69	55	21	25	31	25	18	1.1
9	HRC9E	HRC9B	1-1/2	38	85	60	30	34	32	31	23	1.7
11	HRC11E	HRC11B	1-7/8	48	112	80	36	44	45	45	29	5.0
13	HRC13E	HRC13B	2-3/8	55	130	90	41	50	50	53	36	6.3
15	HRC15E	HRC15B	2-1/2	65	150	104	47	58	62	60	40	9.5
18	HRC18E	HRC18B	3	75	180	120	55	68	77	73	49	16.6
23	HRC23E	HRC23B	3-3/4	95	225	150	71	85	99	86	60	28.0
28	HRC28E	HRC28B	5	130	275	206	90	106	119	106	75	63.0

Note: ** Complete coupling weight.



Flexible Shaft Couplings

HRC Series Jaw Type

Technical Data

Coupling Size	Torque Nom (Nm)	Torque Max (Nm)	Max rpm	Misalignment (mm)			Inertia - kgm ²		Weight-kg	
				Axial	Radial	Angular	Bored	Bushed	Bored	Bushed
7	33	73	7700	0.2	0.3	0.5	0.00085	0.00078	1.0	1.1
9	84	185	6300	0.5	0.3	0.5	0.00115	0.00108	1.7	1.7
11	168	370	5000	0.6	0.3	1.0	0.00400	0.00344	4.2	5.0
13	331	728	4100	0.8	0.4	1.0	0.00780	0.00850	5.5	6.3
15	630	1490	3600	0.9	0.4	1.5	0.01810	0.02112	7.1	9.5
18	998	2300	3000	1.1	0.4	1.5	0.04340	0.04820	15.0	16.6
23	2100	4800	2600	1.3	0.5	2.0	0.12068	0.14052	26.0	28.0
28	3308	7000	2200	1.7	0.5	2.5	0.44653	0.54790	50.0	63.0

Note: Elements are oil resistant, partially resistant to chemicals. Temp Range: -40F to 185F.

Stock Taper Bushings/Shaft Sizes for F and H Coupling Hubs

Inch Shaft Sizes

Coupling Size		7	9	11, 13	15	18	23, 28
Bushings Size		1008	1108	1610	2012	2517	3020
Shaft Dia. (in)							
1/2	0.5000	X	X				
9/16	0.5625	X	X	X			
5/8	0.6250	X	X	X			
11/16	0.6875	X	X	X			
3/4	0.7500	X	X	X	X		
7/8	0.8750	X	X	X	X		
15/16	0.9375	(X)	X	X	X		
1	1.0000	(X)	X	X	X		
1-1/8	1.1250		(X)	X	X		
1-3/16	1.1875			X	X		
1-1/4	1.2500			X	X		
1-3/8	1.3750			X	X	X	X
1-7/16	1.4375			X	X	X	X
1-1/2	1.5000			X	X	X	X
1-5/8	1.6250			(X)	X	X	X
1-3/4	1.7500				X	X	X
1-7/8	1.8750				X	X	X
1-15/16	1.9375				(X)	X	X
2	2.0000				(X)	X	X
2-1/8	2.1250					X	X
2-3/16	2.1875					X	X
2-1/4	2.2500					X	X
2-3/8	2.3750					X	X
2-7/16	2.4375					X	X
2-1/2	2.5000					X	X
2-5/8	2.6250						X
2-3/4	2.7500						X
2-7/8	2.8750						X
2-15/16	2.9375						X
3	3.0000						X

Metric Shaft Sizes

Coupling Size		7	9	11, 13	15	18	23, 28
Bushings Size		1008	1108	1610	2012	2517	3020
Shaft Dia. (mm)							
11		X	X				
12		X	X	X			
14		X	X	X			
15		X	X	X	X		
16		X	X	X	X		
18		X	X	X	X	X	
19		X	X	X	X	X	
20		X	X	X	X	X	
22		X	X	X	X	X	
24		(X)	X	X	X	X	
25		(X)	X	X	X	X	X
28			(X)	X	X	X	X
30				X	X	X	X
32				X	X	X	X
35				X	X	X	X
38				X	X	X	X
40				X	X	X	X
42				(X)	X	X	X
45					X	X	X
48					X	X	X
50					X	X	X
55						X	X
60						X	X
65						X	X
70							X
75							X

Note: (x) denotes shallow key required.

Specify Bushing as follows: 2517-1-3/4 or 2517-35mm.