

Keyless Bushings



KLSS Series

Self Centering

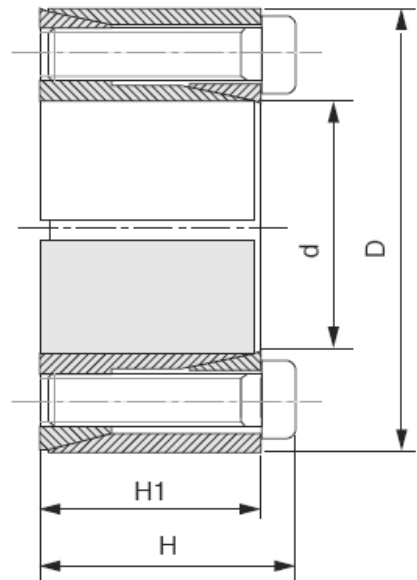
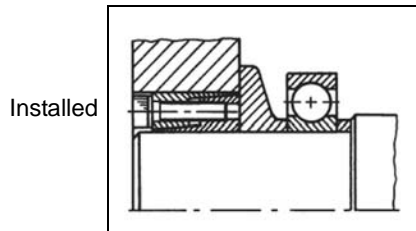
Quick Installation & Removal

Medium to Low Torque

Pre-assembled

Functions as a Press or Shrink Fit

No Loose Set Screws or Keyways



Material: C45E

Part No.	d	D	H	H1	Mounting Screws			Removal Screws		Max Transmitted		Shaft Pressure Pa (Nmm ²)	Hub Pressure Pm (Nmm ²)	Wt. kg
					NV	Torque (Nm)	Screws	NV	Screws	Torque Mt (Nm)	Thrust Ta (kN)			
KLSS10/20	10	20	16	13	M2.5x12	1.2	4	M2.5x12	2	19	3.8	89	45	.02
KLSS11/22	11	22	16	13	M2.5x12	1.2	4	M2.5x12	2	21	3.8	81	41	.02
KLSS12/22	12	22	16	13	M2.5x12	1.2	4	M2.5x12	2	23	3.8	75	41	.02
KLSS14/26	14	26	20	17	M3x16	2.1	4	M3x16	2	39	5.5	71	38	.04
KLSS15/28	15	28	20	17	M3x16	2.1	4	M3x16	2	42	5.5	66	35	.05
KLSS16/32	16	32	21	17	M4x16	4.9	4	M4x16	2	77	9.6	107	54	.07
KLSS17/35	17	35	25	21	M4x20	4.9	4	M4x20	2	82	9.6	81	40	.11
KLSS18/35	18	35	25	21	M4x20	4.9	4	M4x20	2	87	9.6	77	40	.10
KLSS19/35	19	35	25	21	M4x20	1.9	4	M4x20	2	91	9.6	73	40	.10
KLSS20/38	20	38	26	21	M5x20	10.0	4	M5x20	2	157	15.7	113	60	.12
KLSS22/40	22	40	26	21	M5x20	10.0	4	M5x20	2	173	15.7	103	57	.12
KLSS24/47	24	47	32	26	M6x24	17	4	M6x24	2	268	22.3	110	56	.21
KLSS25/47	25	47	32	26	M6x24	17	4	M6x24	2	279	22.3	105	56	.21
KLSS28/50	28	50	32	26	M6x24	17	6	M6x24	3	468	33.5	141	79	.21
KLSS30/55	30	55	32	26	M6x24	17	6	M6x24	3	502	33.5	132	72	.26
KLSS32/55	32	55	32	26	M6x24	17	6	M6x24	3	535	33.5	123	72	.25
KLSS35/60	35	60	37	31	M6x28	17	8	M6x28	4	781	44.6	125	73	.36
KLSS38/65	38	65	37	31	M6x28	17	8	M6x28	4	848	44.6	115	67	.43
KLSS40/65	40	65	37	31	M6x28	17	8	M6x28	4	892	44.6	110	67	.41
KLSS42/75	42	75	44	36	M8x34	41	6	M8x34	3	1272	60.6	122	68	.73
KLSS45/75	45	75	44	36	M8x34	41	6	M8x34	3	1363	60.6	113	68	.68
KLSS48/80	48	80	44	36	M8x34	41	8	M8x34	4	1938	80.8	142	85	.74
KLSS50/80	50	80	44	36	M8x34	41	8	M8x34	4	2019	80.8	136	85	.71