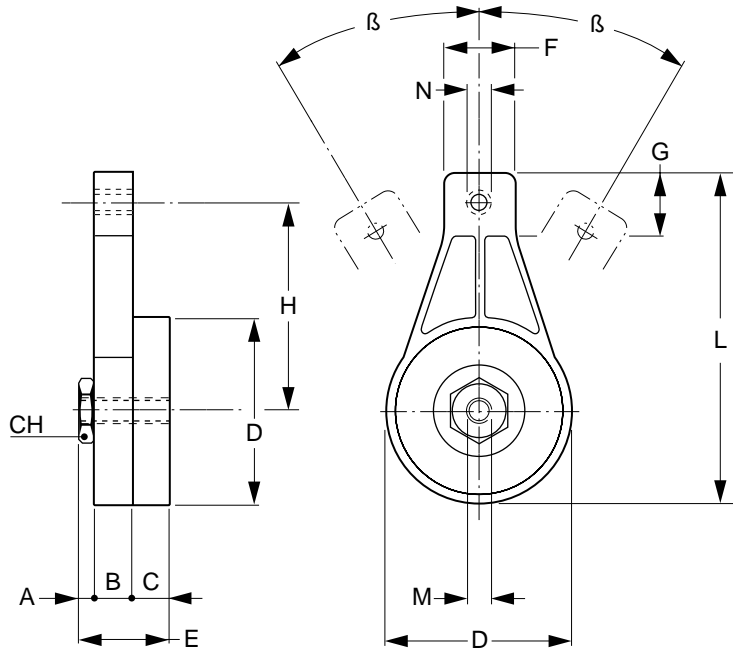




# TC Type Tensioner Arm

Spring-Loaded



Automatically keeps the tension constant.



See pages 52 thru 56 for available heads.

**MATERIAL:** Arm – QTA-TC0 – Acetal  
Others – High-Tensile Die-Cast Aluminum Alloy (See\*)

Catalog Number	Load (N)		A	B	C	CH	D	E	F	G	H	L	M	N	β
	Min	Max													
QTA-TC0M08*	80	160	5	15	15	24	63	35	23	23	75.5	119	M10	M8	45°
QTA-TC0M10*														M10	
QTA-TC0M12*														M12	
QTA-TC1M10	120	240	5	15.5	15.5	24	69	36	30	25	86.5	134	M10	M10	45°
QTA-TC1M12														M12	
QTA-TC1M16														M16	
QTA-TC2M10	240	380	7	18	18	27	90	43	34	30	100	159	M12	M10	30°
QTA-TC2M12														M12	
QTA-TC2M16														M16	
QTA-TC2M20														M20	

\*Material – Acetal

**NOTE:** Select N dimension to match the mounting bolt of the selected head (see pages 52 thru 56).

All dimensions are in mm unless otherwise noted.

**QTC, Econobelt & Zetasassi products are available from: MARYLAND METRICS**  
**P.O.Box 261 Owings Mills, MD 21117 USA E-mail: sales@mdmetric.com**  
**phones: (410)358-3130 (800)638-1830 faxes: (410)358-3142 (800)872-9329 url: http://mdmetric.com**  
 copyright 2003 maryland metrics/qtc/econobelt/zetasassi