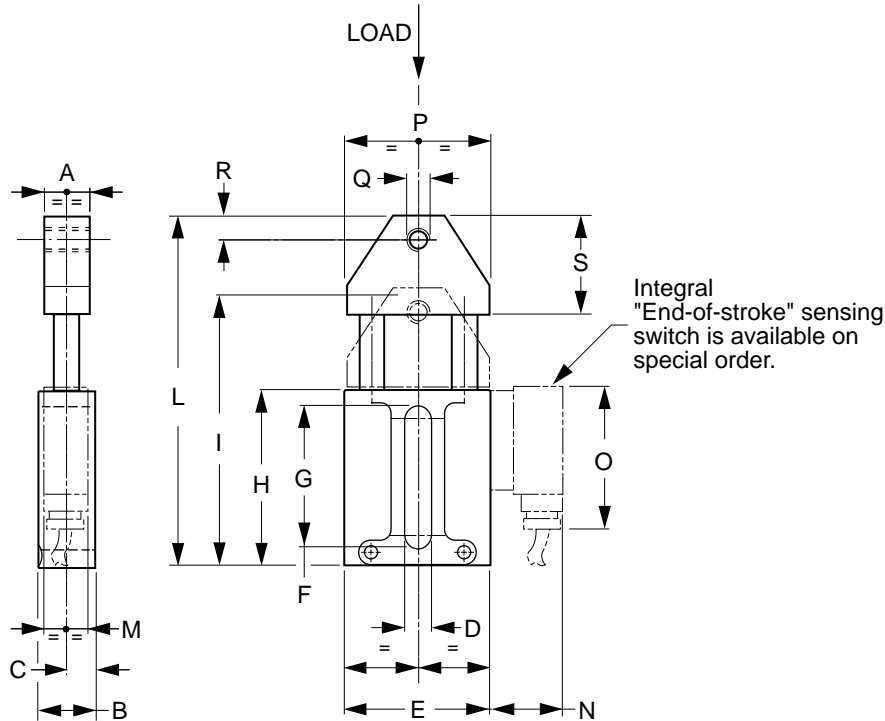




ET Type Tensioner Arm

Spring-Loaded



Integral "End-of-stroke" sensing switch is available on special order.



MATERIAL: Base – High-Tensile Die-Cast Aluminum Alloy
 Mounting Head – Die-Cast Aluminum
 Slide Arms – High-Tensile Steel (Zinc Plated)

Catalog Number	Load (N)		A	B	C	D	E	F	G	H	I	L	P	Q	R	S	M	N	O
	Min	Max																	
QTA-ET1M08	130	250	20	23	12.5	11	56.2	7	58	74	109	137	60	M8	10	35	-	-	-
QTA-ET1M10														M10					
QTA-ET1M12														M12					
QTA-ET2M12	180	420	25	28	15	12.5	70.5	9	70	87	139	175	70	M12	12	50	-	-	-
QTA-ET3M12	300	650	30	33	17.5	14.5	82	9	86	104	165	207	80	M12	14	60	21	35	70
QTA-ET3M14														M14					

All dimensions are in mm unless otherwise noted.

QTC, Econobelt & Zetasassi products are available from: **MARYLAND METRICS**
 P.O.Box 261 Owings Mills, MD 21117 USA E-mail: sales@mdmetric.com
 phones: (410)358-3130 (800)638-1830 faxes: (410)358-3142 (800)872-9329 url: <http://mdmetric.com>

copyright 2003 maryland metrics/qtc/econobelt/zetasassi