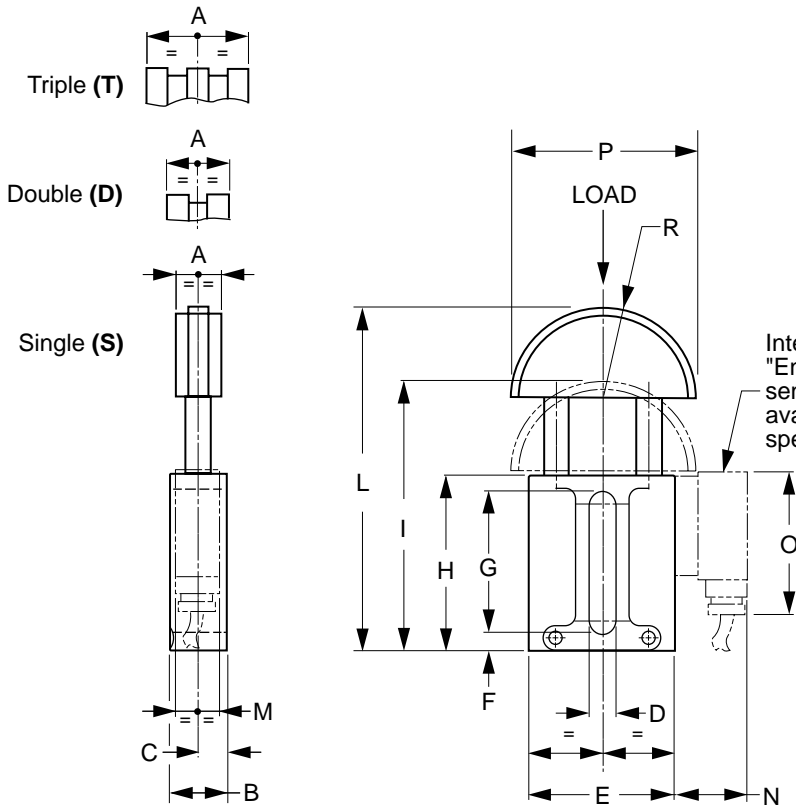


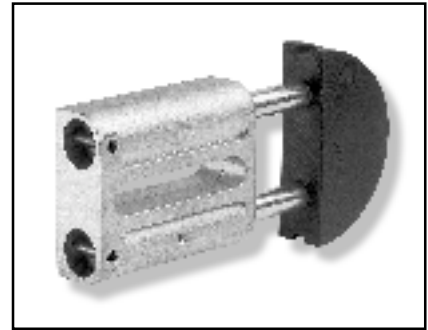


TOT Type Tensioner

For 3/8" to 1-1/2" Pitch Roller Chains
Spring-Loaded



Automatically keeps the tension constant.



MATERIAL: Head – Polyethylene (UHMW-PE)
Base – High-Tensile Die-Cast Aluminum Alloy
Slide Arms – High-Tensile Steel (Zinc Plated)
MAX. OPERATING TEMPERATURE: 65°C (149°F)

Catalog Number	Load (N)		Chain Pitch	A	B	C	D	E	F	G	H	I	L	M	N	O	P	R
	Min	Max																
QCT-TOT103S QCT-TOT103D QCT-TOT103T	130	250	3/8" x 7/32"	20 20 25	23	12.5	11	56.2	7	58	74	110	138	-	-	-	70	35
QCT-TOT104S QCT-TOT104D QCT-TOT104T	130	250	1/2" x 5/16"	20 20 35	23	12.5	11	56.2	7	58	74	110	138	-	-	-	70	35
QCT-TOT105S QCT-TOT105D QCT-TOT105T	130	250	5/8" x 3/8"	20 25 41.5	23	12.5	11	56.2	7	58	74	110	138	-	-	-	70	35
QCT-TOT205S QCT-TOT205D QCT-TOT205T	180	420	5/8" x 3/8"	22 25 41.5	28	15	12.5	70.5	9	70	87	133	169	-	-	-	90	45
QCT-TOT206S QCT-TOT206D QCT-TOT206T	180	420	3/4" x 7/16"	22 30 49	28	15	12.5	70.5	9	70	87	133	169	-	-	-	90	45
QCT-TOT308S QCT-TOT308D QCT-TOT308T	300	650	1" x 17 mm	25 45 48	33	17.5	14.5	82	9	86	104	160	202	21	35	70	110	55
QCT-TOT310S QCT-TOT310D QCT-TOT310T	300	650	1-1/4" x 3/4"	25 54 90	33	17.5	14.5	82	9	86	104	160	202	21	35	70	110	55
QCT-TOT312S QCT-TOT312D QCT-TOT312T	300	650	1-1/2" x 1"	25 71 119	33	17.5	14.5	82	9	86	104	160	202	21	35	70	110	55

All dimensions are in mm unless otherwise noted.

QTC, Econobelt & Zetasassi products are available from: MARYLAND METRICS
P.O.Box 261 Owings Mills, MD 21117 USA E-mail: sales@mdmetric.com
phones: (410)358-3130 (800)638-1830 faxes: (410)358-3142 (800)872-9329 url: http://mdmetric.com
 copyright 2003 maryland metrics/qtc/econobelt/zetasassi