

DIETZEL UNIVOLT Products are available from:

MARYLAND METRICS

P.O. Box 261 Owings Mills, MD 21117 USA

phones: (410)358-3130 (800)638-1830

faxes: (410)358-3142 (800)872-9329

email: sales@mdmetric.com web: <http://mdmetric.com>

RFQ form: <http://mdmetric.com/rfq.htm>

DIETZEL
UNIVOLT

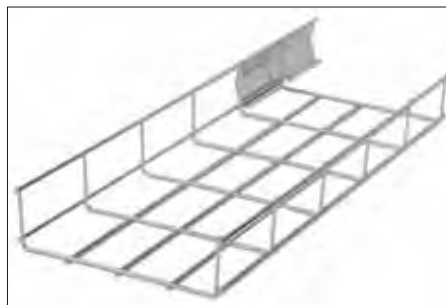
Cable Management Systems

How to order: Please preface each UNIVOLT Catalog part number with 'R593-'

Example: R593-BSSL 16

Conduits

from metal and accessories





Floor Boxes & Power Pole

System for power, data and communication installations in modern commercial applications.

UK designed and manufactured, the UNIVOLT Power Pole range can be fed from under the floor or from a ceiling void using traditional cable or a busbar trunking system. The UNIVOLT Power Poles are designed to accept and enhance the appearance of the latest British Standard wiring accessories.

Characteristics of UNIVOLT's Power Poles:

- Robust double sided aluminium spine, allows subdivision into maximum four compartments (MTW50 divider)
- Light weight aluminium construction with white/silver powder coated finish.
- Easily fitted and adaptable white PVC lids.
- Possibility to flexibly install and adjust outlet boxes.

The UNIVOLT Cavity Floor Service Box offers excellent quality and a flexible solution to meet the specific needs of various installations in offices or places with in-floor wiring.

Cavity Floor Box Range

Floor Boxes



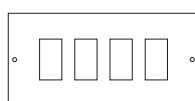
Art	Description	ps	Ref
UNIFFB3L/90	3 Compartment Cavity Floor Box 305x220x90mm, clw 1x TSS0, 1x blank, 1x RJ45	1	096 516
FOBP305	Twin Switch Socket Plate	1	096 523
FOBP303	Twin Socket Accessory Plate	1	096 520
FOBP300	Blank Plate	1	096 517
FOBP306	6 x LJ6C Plate (37x22mm cut out)	1	096 522
FOBP307	4 x LJ6C Plate (37x22mm cut out)	1	096 518
FOBP309	4 x Alpha Snap Plate (47x22mm cut out)	1	096 521
FOBP310	2 x LJU3/4/5 for 86x86mm Accessory Plate	1	096 519
FOBP312	2 x Euro Plate & Collars (50x50mm)	1	096 524

*

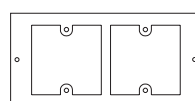
Accessory Plates



FOBP300
Blank Plate



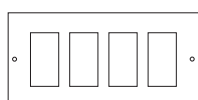
FOBP307
RJ45/LJ6C Plate



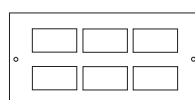
FOBP310
Double LJU3/4/5 Plate



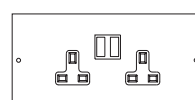
FOBP303
Standard Twin
Accessory Plate



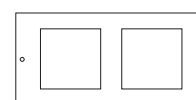
FOBP309
Alpha Snap Plate



FOBP306
6x RJ45/LJ6C Data Plate

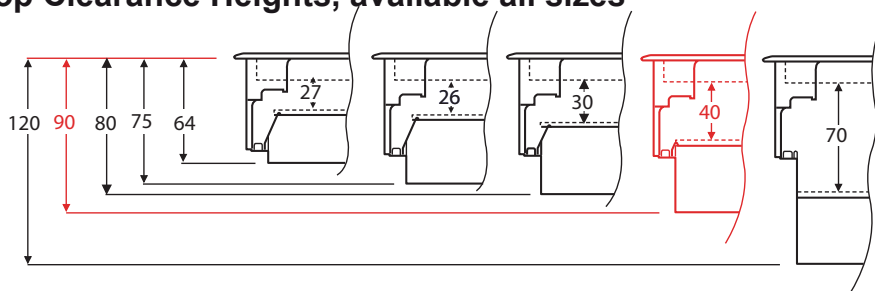


FOBP305
Twin Switched Sockets



FOBP312
2 Euro Standard
50x50mm Plate

Plug-Top Clearance Heights, available all sizes



Measurements for overall floor box depth and plug-top clearance height in (mm)

*Please note more sizes and variations are available



PP1, power post; white (RAL 9010), silver (RAL 9006)

Components:

- double-sided aluminium spine
- top cap
- 2 trunking lids (front and back)
- 3 outlet boxes SLB I
- base fixing kit (with screws)

height **690mm**

Material	Temp.
Al, PVC-U	-25°C/+60°C

art	dim	ps	ref
PP1 white	99x104x690mm	1	082 244
PP1 silver	99x104x690mm	1	085 838

PP2, power pole; white (RAL 9010), silver (RAL 9006)

Components:

- double-sided aluminium spine
- top fixing kit
- trunking lids (front and back)- 4 x 1.8m
- 6 outlet boxes SLB I
- base fixing kit (with screws)
- ceiling flange

Maximum distance between floor and false ceiling **3600mm**

Maximum distance between floor and top fixing surface **3600mm**

Material	Temp.
Al, PVC-U	-25°C/+60°C

art	dim	ps	ref
PP2 white	99x104x3600mm	1	082 245
PP2 silver	99x104x3600mm	1	085 691





Conduits and Trunkings from Metal

robust. Resistance against very high temperatures and mechanical stresses is still a strong argument for the use of Univolt® metal conduits. Furthermore, these items excel in their stability against chemical attacks.

special. Unique specifications of industrial installations make metal conduits the most suitable cable protection. One particular field of application is cable management systems with electromagnetic screening properties.



Metal Section



Please note, carriage charges may apply for items on this page

Cable Tray, light duty/medium duty



art	Description	ps	length	ref
LCC2	50mm L/Duty Cable Tray (3m)	1 length	3m	056 682
LCC3	75mm L/Duty Cable Tray (3m)	1 length	3m	056 680
LCC4	100mm L/Duty Cable Tray (3m)	1 length	3m	056 687
LCC6	150mm L/Duty Cable Tray (3m)	1 length	3m	056 686
MDT2	50mm M/Return Cable Tray (3m)	1 length	3m	056 676
MDT3	75mm M/Return Cable Tray (3m)	1 length	3m	056 670
MDT4	100mm M/Return Cable Tray (3m)	1 length	3m	056 678
MDT6	150mm M/Return Cable Tray (3m)	1 length	3m	056 677
MDT9	225mm M/Return Cable Tray (3m)	1 length	3m	056 676
MDT12	300mm M/Return Cable Tray (3m)	1 length	3m	056 674

Cable Trunking



art	Description	ps	length	ref
CT22	Cable Trunking 50x50	1 length	3m	056 419
CT33	Cable Trunking 75x75	1 length	3m	056 424
CT44	Cable Trunking 100x100	1 length	3m	056 408
CT66	Cable Trunking 150x150	1 length	3m	056 442

Steel Conduit



art	Description	ps	length	ref
SCB20	20mm B/Enamelled Steel Conduit (3.0m)	30m	3m	056 093
SCG20	20mm Galvanised Steel Conduit (3.75m)	30m	3.75m	056 091
SCB25	25mm B/Enamelled Steel Conduit (3.0m)	30m	3m	056 092
SCG25	25mm Galvanised Steel Conduit (3.75m)	30m	3.75m	056 090

Steel Channelling



art	Description	ps	length	ref
SCH13	13mm Steel Channelling	100m	2m	055 965
SCH25	25mm Steel Channelling	100m	2m	055 964
SCH38	38mm Steel Channelling	100m	2m	055 971

Single Slotted Channel



art	Description	ps	length	ref
TS1	41x21 1.5mm Single Slotted Channel	1length	3m	056 003
TS3	41x21 2.5mm Single Slotted Channel	1 length	3m	056 002
TL1	41x41 1.5mm Single Slotted Channel	1 length	3m	055 995
TL3	41x41 2.5mm Single Slotted Channel	1 length	3m	055 994

*Please note: more sizes and variations are available

Cable Basket, Electroplated Zinc as standard



art	Height [mm]	Width [mm]	Length [mm]	Finish	ref
AM35-50	35	50	3000	BZP	087 970
AM35-100	35	100	3000	BZP	08 7964
AM35-150	35	150	3000	BZP	087 965
AM35-200	35	200	3000	BZP	087 966
AM35-300	35	300	3000	BZP	087 967
AM35-400	35	400	3000	BZP	087 968
AM60-50	60	50	3000	BZP	087 971
AM60-100	60	100	3000	BZP	087 972
AM60-150	60	150	3000	BZP	087 973
AM60-200	60	200	3000	BZP	087 974
AM60-300	60	300	3000	BZP	087 975
AM60-400	60	400	3000	BZP	087 976
AM60-450	60	450	3000	BZP	087 977
AM60-500	60	500	3000	BZP	087 978
AM60-600	60	600	3000	BZP	087 979
AM110-100	110	100	3000	BZP	087 980
AM110-200	110	200	3000	BZP	087 981
AM110-300	110	300	3000	BZP	087 982
AM110-400	110	400	3000	BZP	087 984
AM110-500	110	500	3000	BZP	087 986
AM110-600	110	600	3000	BZP	087 987

Accessories

Quick Fit Coupler



art	Finish	ref
AMQC	GALV	087 991

Clamp Coupler



art	Finish	ref
AMCK	GALV	087 993

Hold Down Clamp



art	Finish	ref
AMHDC	GALV	087 995

DIETZEL UNIVOLT

Cable Management Systems

DIETZEL UNIVOLT Products are available from:

MARYLAND METRICS

P.O. Box 261 Owings Mills, MD 21117 USA

phones: (410)358-3130 (800)638-1830

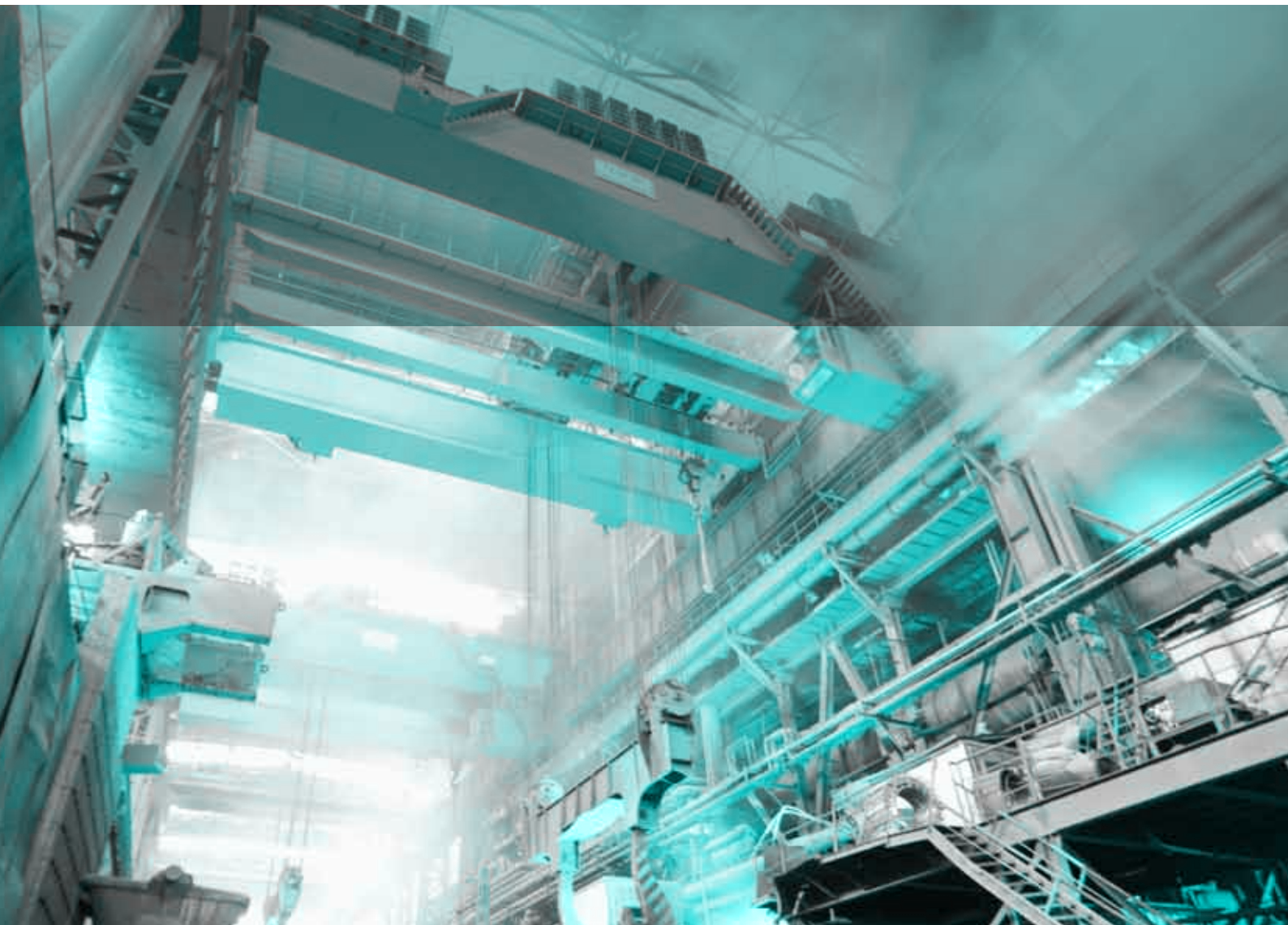
faxes: (410)358-3142 (800)872-9329

email: sales@mdmetric.com web: <http://mdmetric.com>

RFQ form: <http://mdmetric.com/rfq.htm>

How to order: Please preface each UNIVOLT Catalog part number with 'R593-'

Example: R593-BSSL 16



International Sales:

Dietzel GmbH
Export Department
1. Haidequerstraße 3-5
A 1110 Vienna, Austria
Tel.: 0043 1/ 760 76-0
Fax: 0043 1/ 760 76-200

More Products (Mini-Trunking; Skirting Trunking; Maxi Trunking...) available in our short-form UK catalogue