

Maryland Metrics: Technical Data Chart



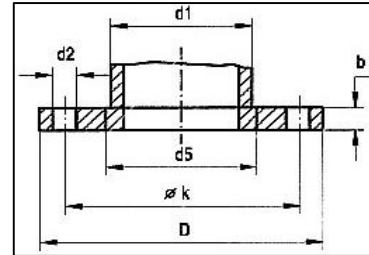
MARYLAND METRICS

phones: (410) 358-3130 (800) 638-1830
 faxes: (410) 358-3142 (800) 872-9329

P.O. Box 261 Owings Mills, MD 21117 USA
 6119 Oakleaf Avenue Baltimore, MD 21215 USA

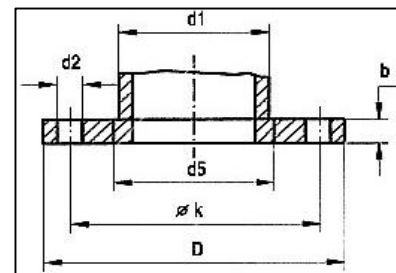
Flanges to VSM (Swiss) Standards

Flat flange for welding PN 6



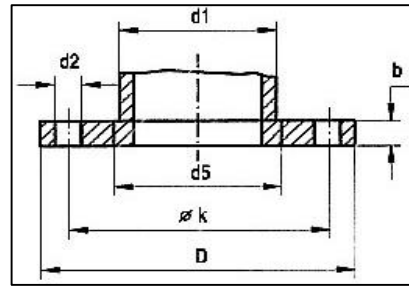
Original no.	Nominal diameter	pressure / bar	thickness [mm]	Ø Pipe	Ø diameter hole [mm]	Ø diameter circle [mm]	Number of holes	Ø Flange diameter
VSM 18695	25	6	12.0	33.7	11.5	75.0	4	100.0
VSM 18695	32	6	14.0	42.4	14.0	90.0	4	120.0
VSM 18695	40	6	14.0	48.3	14.0	100.0	4	130.0
VSM 18695	50	6	14.0	60.3	14.0	110.0	4	140.0
VSM 18695	65	6	14.0	76.1	14.0	130.0	4	160.0
VSM 18695	80	6	16.0	88.9	18.0	150.0	4	190.0
VSM 18695	100	6	16.0	108.0	18.0	170.0	4	210.0
VSM 18695	100	6	16.0	114.3	18.0	170.0	4	210.0
VSM 18695	125	6	18.0	133.0	18.0	200.0	8	240.0
VSM 18695	125	6	18.0	139.7	18.0	200.0	8	240.0
VSM 18695	150	6	20.0	159.0	18.0	225.0	8	265.0
VSM 18695	150	6	20.0	168.3	18.0	225.0	8	265.0
VSM 18695	200	6	22.0	219.1	18.0	280.0	8	320.0

Flat flange for welding PN 10



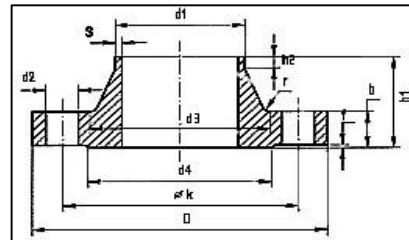
Original no.	Nominal diameter	pressure / bar	thickness [mm]	Ø Pipe	Ø diameter hole [mm]	Ø diameter circle [mm]	Number of holes	Ø Flange diameter
VSM 18696	200	10	26.0	219.1	22.0	295.0	8	340.0

Flat flange for welding PN 16



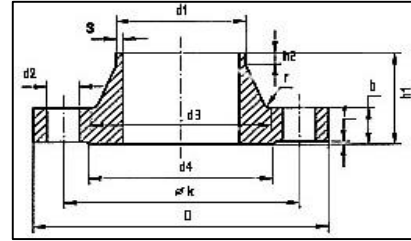
Original no.	Nominal diameter	pressure / bar	thickness [mm]	Ø Pipe	Ø diameter hole [mm]	Ø diameter circle [mm]	Number of holes	Ø Flange diameter
VSM 18697	15	10-16	12.0	21.3	14.0	65.0	4	95.0
VSM 18697	25	10-16	14.0	33.7	14.0	85.0	4	115.0
VSM 18697	32	10-16	16.0	42.4	18.0	100.0	4	140.0
VSM 18697	40	10-16	16.0	44.5	18.0	110.0	4	150.0
VSM 18697	40	10-16	16.0	48.3	18.0	110.0	4	150.0
VSM 18697	50	10-16	18.0	60.3	18.0	125.0	4	165.0
VSM 18697	65	10-16	18.0	76.1	18.0	145.0	4	185.0
VSM 18697	80	16	20.0	88.9	18.0	160.0	8	200
VSM 18697	100	10-16	22.0	108.0	18.0	180.0	8	220.0
VSM 18697	100	10-16	22.0	114.3	18.0	180.0	8	220.0
VSM 18697	125	10-16	24.0	133.0	18.0	210.0	8	250.0
VSM 18697	125	10-16	24.0	139.7	18.0	210.0	8	250.0
VSM 18697	150	10-16	24.0	159.0	22.0	240.0	8	285.0
VSM 18697	150	10-16	24.0	168.3	22.0	240.0	8	285.0
VSM 18697	200	16	26.0	219.1	22.0	295	12	340.0

Weld Neck Flange PN 6



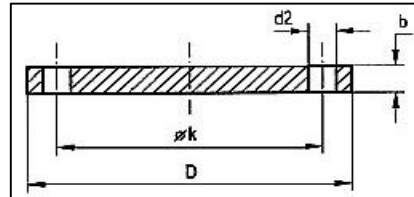
Original no.	Nominal diameter	pressure / bar	thickness [mm]	Ø Pipe	Ø diameter hole [mm]	Ø diameter circle [mm]	Number of holes	Ø Flange diameter
VSM 18716	25	6	14.0	33.7	11.5	75.0	4	100.0
VSM 18716	32	6	14.0	42.4	14.0	90.0	4	120.0
VSM 18716	40	6	14.0	48.3	14.0	100.0	4	130.0
VSM 18716	50	6	14.0	60.3	14.0	110.0	4	140.0
VSM 18716	65	6	14.0	76.1	14.0	130.0	4	160.0
VSM 18716	80	6	16.0	88.9	18.0	150.0	4	190.0
VSM 18716	100	6	16.0	108.0	18.0	170.0	4	210.0
VSM 18716	100	6	16.0	114.3	18.0	170.0	4	210.0

Weld Neck Flange PN 16



Original no.	Nominal diameter	pressure / bar	thickness [mm]	Ø Pipe	Ø diameter hole [mm]	Ø diameter circle [mm]	Number of holes	Ø Flange diameter
VSM 18718	15	10-16	14.0	21.3	14.0	65.0	4	95.0
VSM 18718	20	10-16	16.0	26.9	14.0	75.0	4	105.0
VSM 18718	25	10-16	16.0	30.0	14.0	85.0	4	115.0
VSM 18718	25	10-16	16.0	33.7	14.0	85.0	4	115.0
VSM 18718	32	10-16	16.0	42.4	18.0	100.0	4	140.0
VSM 18718	40	10-16	16.0	48.3	18.0	110.0	4	150.0
VSM 18718	50	10-16	18.0	57.0	18.0	125.0	4	165.0
VSM 18718	50	10-16	18.0	60.3	18.0	125.0	4	165.0
VSM 18718	65	10-16	18.0	76.1	18.0	145.0	4	185.0
VSM 18718	80	16	20.0	88.9	18.0	160.0	8	200.0
VSM 18718	100	10-16	20.0	108.0	18.0	180.0	8	220.0
VSM 18718	100	10-16	20.0	114.3	18.0	180.0	8	220.0
VSM 18718	125	10-16	22.0	133.0	18.0	210.0	8	250.0
VSM 18718	125	10-16	22.0	139.7	18.0	210.0	8	250.0
VSM 18718	150	10-16	22.0	159.0	22.0	240.0	8	285.0
VSM 18718	150	10-16	22.0	168.3	22.0	240.0	8	285.0
VSM 18718	200	16	24.0	219.1	22.0	295.0	12	340.0

Blind Flange



Original no.	Nominal diameter	pressure / bar	thickness [mm]	Ø diameter hole [mm]	Ø diameter circle [mm]	Number of holes	Ø Flange diameter
VSM 18703	25	10/16	14.0	14.0	85.0	4	115.0
VSM 18703	40	6	14.0	14.0	100.0	4	130.0
VSM 18703	50	6	14.0	14.0	110.0	4	140.0
VSM 18703	32	10/16	16.0	18.0	100.0	4	140.0
VSM 18703	40	10/16	16.0	18.0	110.0	4	150.0
VSM 18703	65	6	14.0	14.0	130.0	4	160.0
VSM 18703	50	10/16	18.0	18.0	125.0	4	165.0
VSM 18703	65	10/16	18.0	18.0	145.0	4	185.0
VSM 18703	80	6	16.0	18.0	150.0	4	190.0
VSM 18703	80	16	20.0	18.0	160.0	8	200.0
VSM 18703	100	6	16.0	18.0	170.0	4	210.0
VSM 18703	100	10/16	22.0	18.0	180.0	8	220.0
VSM 18703	125	6	18.0	18.0	200.0	8	240.0
VSM 18703	125	10/16	24.0	18.0	210.0	8	250.0
VSM 18703	150	6	20.0	18.0	225.0	8	265.0
VSM 18703	150	10/16	24.0	22.0	240.0	8	285.0
VSM 18703	200	16	26.0	22.0	295.0	12	340.0
VSM 18703	200	10	26.0	22.0	295.0	8	340.0