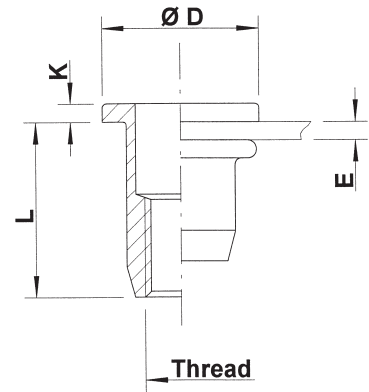
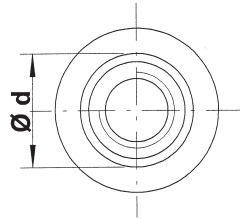
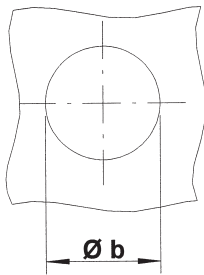


● Stainless Steel 304

Flat head
Round shank
Open

UPO



Stainless steel

THREAD	TYPE	E = grip	L	b ^{+0,1} = drill dia	d = shank dia	D	K	kg/1000	ORDER CODE
M4	UPO20	0,5-2,0	11,0	6,0	6,0	9,0	1,0	1,5	544 010
	UPO35	2,0-3,5	12,5	6,0	6,0	9,0	1,0	1,6	544 020
M5	UPO30	0,5-3,0	11,5	7,0	7,0	10,0	1,0	1,8	545 040
	UPO50	3,0-5,0	15,0	7,0	7,0	10,0	1,0	2,2	545 050
M6	UPO30	0,5-3,0	14,5					4,1	546 020
	UPO50	3,0-5,0	16,5	9,0	9,0	12,0	1,5	4,4	546 035
	UPO70	5,0-7,0	18,5					4,8	546 050*
M8	UPO30	0,5-3,0	16,0	11,0	11,0	15,0	1,5	6,1	548 010
	UPO55	3,0-5,5	18,5	11,0	11,0	15,0	1,5	6,5	548 020
M10	UPO30	0,8-3,0	18,5	12,1	12,0	15,0	1,0	5,9	540 020
	UPO50	3,0-5,0	20,5	12,1	12,0	15,0	1,0	6,0	540 030

* Minimum order quantity required after depletion of stock

All dimensions in mm
Technical data subject to modification

