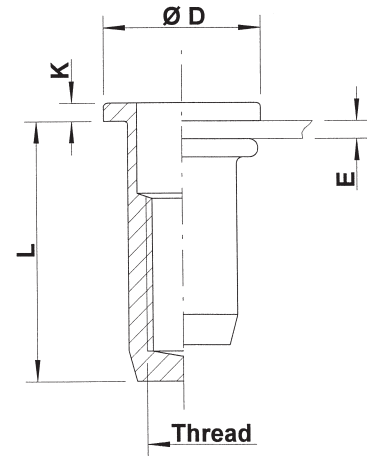
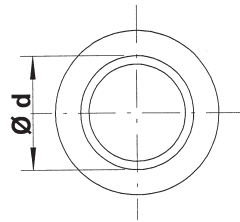
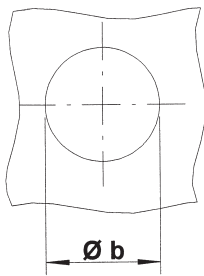


● **Stainless Steel 304**

Flat head
Round shank
Closed

UPX



THREAD	TYPE	E = grip	L	b ^{+0,1} = drill dia	d = shank dia	D	K	kg/1000	ORDER CODE
M4	UPX20	0,5-2,0	15,0	6,0	6,0	9,0	1,0	2,2	544 110
M5	UPX30	0,5-3,0	17,5	7,0	7,0	10,0	1,0	3,0	545 180
M6	UPX30	0,5-3,0	21,5	9,0	9,0	12,0	1,5	6,6	546 100
M8	UPX30	0,5-3,0	23,5	11,0	11,0	15,0	1,5	9,9	548 065

All dimensions in mm
Technical data subject to modification

