

Stainless Steel 316
(contains Molybden)

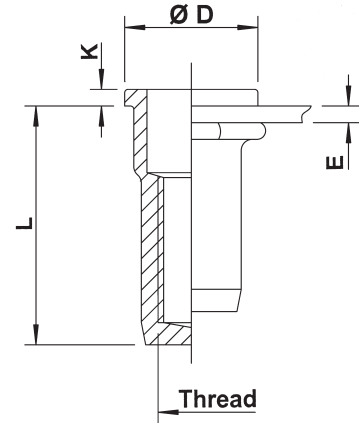
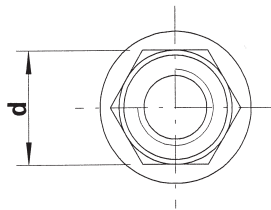
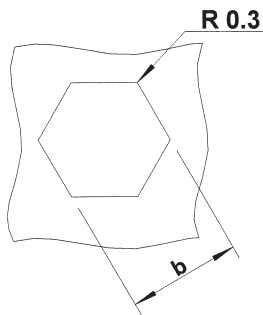
Flat head
Semi-hexagonal shank
Closed

extra high
corrosion resistance



Stainless steel

HUPX



THREAD	TYPE	E = grip	L	b ^{+0,1} = hex hole	d = hex shank	D	K	kg/1000	ORDER CODE
*M5	HUPX30	0,5-3,0	17,5	7,0	7,0	10,0	1,0	3,0	555 520
M6	HUPX30	0,5-3,0	21,5	9,0	9,0	12,0	1,5	6,6	556 470
M8	HUPX30	0,5-3,0	23,5	11,0	11,0	15,0	1,5	9,6	558 260

Availability: please contact our Sales Department

*M5: in progress

All dimensions in mm
Technical data subject to modification

