

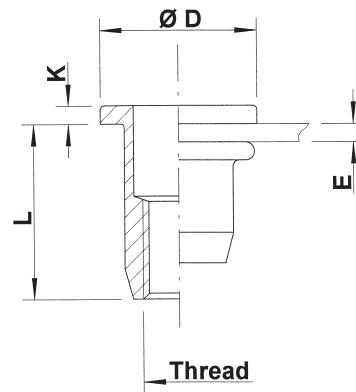
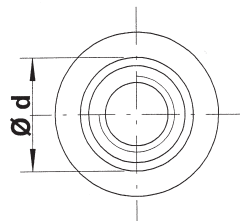
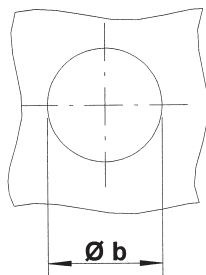
Stainless Steel 316
(contains Molybden)

Flat head
Round shank
Open

extra high
corrosion resistance



UPO



| THREAD | TYPE | E = grip | L | b ^{+0,1} = drill dia | d = shank dia | D | K | kg/1000 | ORDER CODE |
|--------|-------|----------|------|-------------------------------|---------------|------|-----|---------|------------|
| *M5 | UPO30 | 0,5-3,0 | 11,5 | 7,0 | 7,0 | 10,0 | 1,0 | 1,8 | 555 040 |
| M6 | UPO30 | 0,5-3,0 | 14,5 | 9,0 | 9,0 | 12,0 | 1,5 | 4,1 | 556 020 |
| M8 | UPO30 | 0,5-3,0 | 16,0 | 11,0 | 11,0 | 15,0 | 1,5 | 6,1 | 558 010 |

Availability: please contact our Sales Department

*M5: in progress

All dimensions in mm
Technical data subject to modification

