

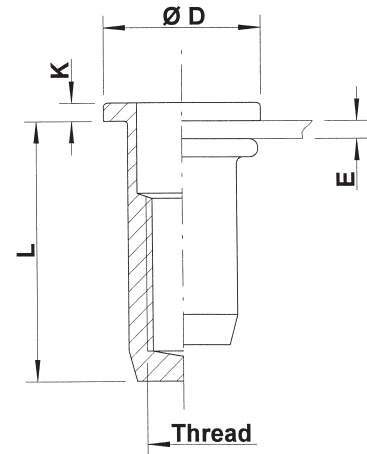
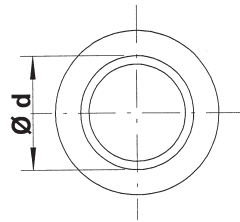
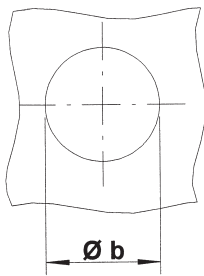
**Stainless Steel 316**  
(contains Molybden)

Flat head  
Round shank  
Closed

extra high  
corrosion resistance



**UPX**



THREAD	TYPE	E = grip	L	b <sup>+0,1</sup> = drill dia	d = shank dia	D	K	kg/1000	ORDER CODE
*M5	UPX30	0,5-3,0	17,5	7,0	7,0	10,0	1,0	3,0	555 180
M6	UPX30	0,5-3,0	21,5	9,0	9,0	12,0	1,5	6,6	556 100
M8	UPX30	0,5-3,0	23,5	11,0	11,0	15,0	1,5	9,9	558 065

Availability: please contact our Sales Department

\*M5: in progress

All dimensions in mm  
Technical data subject to modification



Stainless steel