

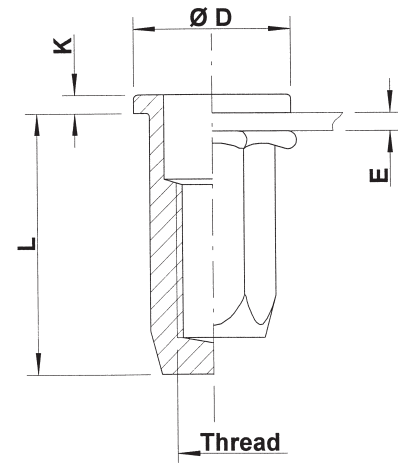
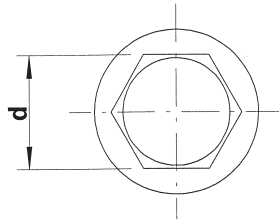
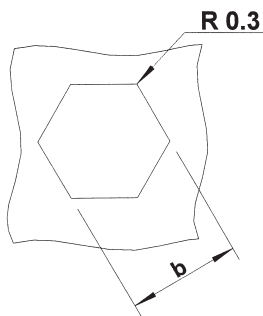
## Steel

Flat head  
Hexagonal shank  
Closed

Zinktop (A)  
Zinc plated, yellow passivated (B)



### HUPX/HSPX



| THREAD | TYPE   | E = grip | L    | b <sup>+0,1</sup> = hex hole | d = hex shank | D    | K   | kg/1000 | ORDER CODE (A) | ORDER CODE (B) |
|--------|--------|----------|------|------------------------------|---------------|------|-----|---------|----------------|----------------|
| M4     | HUPX20 | 0,5-2,0  | 14,5 | 6,0                          | 6,0           | 9,0  | 1,0 | 2,2     | 524 609*       | 524 600*       |
| M5     | HUPX30 | 0,5-3,0  | 19,0 | 7,0                          | 7,0           | 10,0 | 1,0 | 3,6     | 525 589        | 525 580        |
|        | HUPX55 | 3,0-5,5  | 21,5 |                              |               |      |     | 3,9     | 525 599*       | 525 590*       |
| M6     | HUPX30 | 0,5-3,0  | 21,5 | 9,0                          | 9,0           | 13,0 | 1,5 | 7,4     | 526 569        | 526 560        |
|        | HUPX55 | 3,0-5,5  | 23,5 |                              |               |      |     | 7,6     | 526 579*       | 526 570*       |
| M8     | HUPX30 | 0,5-3,0  | 24,5 | 11,0                         | 11,0          | 16,0 | 1,5 | 11,6    | 528 529        | 528 520        |
|        | HUPX55 | 3,0-5,5  | 27,0 |                              |               |      |     | 12,0    | 528 539*       | 528 530*       |
| M10    | HSPX35 | 0,8-3,5  | 31,0 | 13,0                         | 13,0          | 19,0 | 2,0 | 19,0    | 520 654        | 520 655        |
|        | HSPX60 | 3,5-6,0  | 33,5 |                              |               |      |     | 19,4    | 520 659*       | 520 656*       |

\* Minimum order quantity required after depletion of stock

All dimensions in mm  
Technical data subject to modification

