

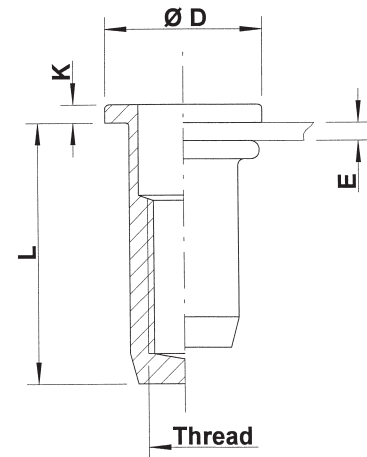
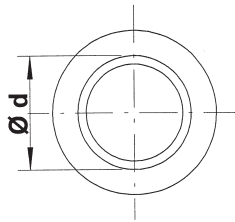
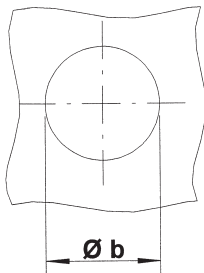
● **Steel**

Flat head  
Round shank  
Closed

Zinktop (A)  
Zinc plated, yellow passivated (B)



**UPX**



Steel

THREAD	TYPE	E = grip	L	b <sup>+0,1</sup> = drill dia	d = shank dia	D	K	kg/1000	ORDER CODE (A)	ORDER CODE (B)
M4	UPX30	0,5-3,0	14,75	6,0	6,0	10,0	0,75	2,1	524 189	524 180
	UPX45	3,0-4,5	16,25	6,0	6,0	10,0	0,75	2,1	524 229*	524 220*
M5	UPX30	0,5-3,0	18,0	7,0	7,0	11,0	1,0	3,4	525 169	525 160
	UPX55	3,0-5,5	20,5	7,0	7,0	11,0	1,0	3,6	525 189*	525 180*
M6	UPX30	0,5-3,0	21,5	9,0	9,0	13,0	1,5	6,8	526 169	526 160
	UPX55	3,0-5,5	24,5	9,0	9,0	13,0	1,5	7,5	526 209	526 200
M8	UPX30	0,5-3,0	22,5	11,0	11,0	16,0	1,5	9,7	528 189	528 180
	UPX55	3,0-5,5	25,5	11,0	11,0	16,0	1,5	10,9	528 209	528 200

\* Minimum order quantity required after depletion of stock

All dimensions in mm  
Technical data subject to modification

