



Stainless Steel 316

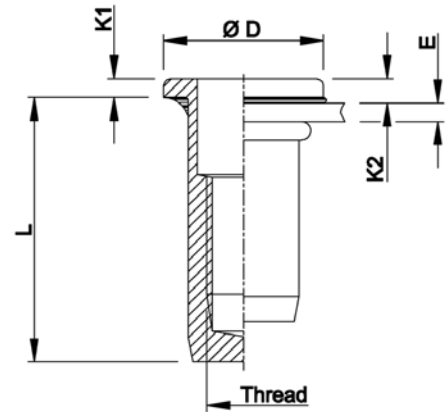
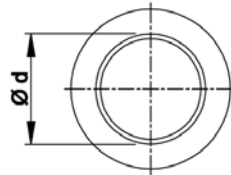
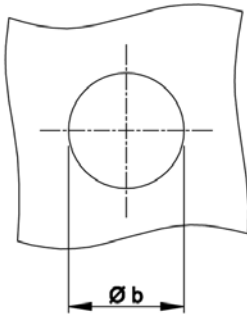
(contains > 2% Molybden)

Round shank
 Flat head with underhead seal
 Closed end

DPX

watertight IP67¹

extra high
 corrosion resistance



M4	DPX15	0,5-1,5	15,0	6,0	6,0	9,0	1,0	1,3	2,2	554 1105	1500
M5	DPX25	0,5-2,5	17,5	7,0	7,0	10,0	1,0	1,3	3,0	555 1805	1500
	DPX45	2,5-4,5	19,5						3,2	555 1855	-
M6	DPX25	0,5-2,5	21,5	9,0	9,0	12,0	1,5	1,9	6,7	556 1005	750
M8	DPX25	0,5-2,5	23,5	11,0	11,0	15,0	1,5	2,0	9,9	558 0655	1000

All dimensions in mm - Technical data subject to modification

Tolerances and characteristics see chapter "Technical Data" and [pg 60](#)

¹ IP 67 guaranteed under Dejongd test conditions

K2: Reference values only. Several factors (seal thickness, hole size, setting force ...) influence head and seal thickness after installation.



How to order or inquire: Please prefix the TUBTARA order code with 'R852-' example: R852-513550